









Chapter 1

## **Community Description**

Grass Lake Area Recreation Plan

*2016-2020 edition*

The Grass Lake Area encompasses Grass Lake Charter Township and the Village of Grass Lake, comprising an area of approximately 48 square miles. The Township occupies approximately 47 square miles. The Village has an area of approximately 1 square mile.

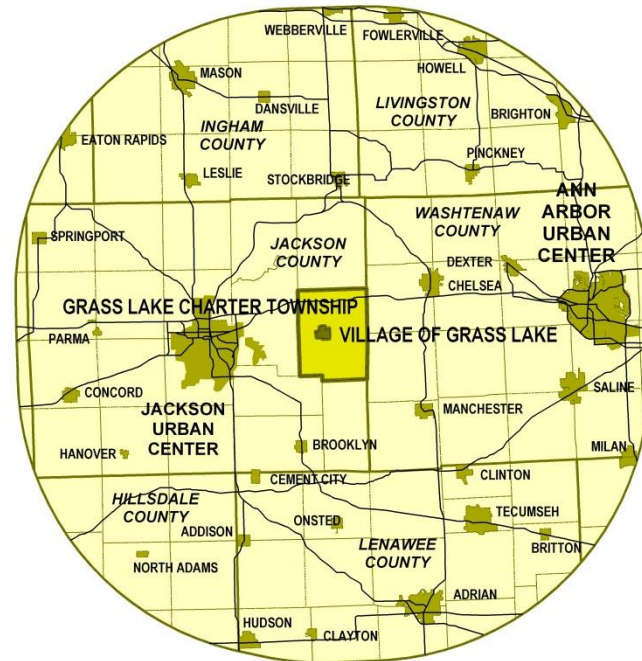
The first priority of the Village of Grass Lake and Grass Lake Charter Township is to jointly develop a plan which responds to the recreational desires of their citizenry and to plan for enhancements to the parks and recreational programs of the municipalities. The recreation plan will also provide a clear picture of the recreational opportunities available to residents regardless of who provides them. That review will catalogue nontraditional recreation opportunities such as historic districts/structures and shopping opportunities as well as traditional parks and recreation facilities.

In addition to its rich network of aquatic features and close proximity to a couple of nearby urban centers, the Grass Lake Area is home to a variety of neighborhoods and developments. Further, the presence of a wide variety of recreational facilities and opportunities requires an intensive review of how those assets can be successfully integrated into the Area. With all those issues in mind, a sincere effort was spent in developing this plan which represents the projected needs for recreation facilities and services in the Village and Township during the early years of the 21st Century.

**Location**

The Grass Lake Area is located on the eastern border of Jackson County (please see the Location Map). Grass Lake Charter Township surrounds the Village of Grass Lake. Grass Lake comprises the northwestern border of the Village. Interstate 94 (I-94) and other regional roadways connect the Area to the nearby urban centers of Jackson and Ann Arbor (please see the Base Map).

**LOCATION**





## **A Brief Socioeconomic Summary**

The demographic composition of Grass Lake Area residents affects its recreational needs. Accordingly, pertinent demographic components are listed below along with a brief description of the local situation. Each of the components is described in greater detail in Appendix A of this document.

### ■ **Population History & Projections**

The 2010 population for the Grass Lake Area was 5,864, with the population increasing steadily between 1930 and 2010. Based upon this pattern, the population in 2020 is projected to be around 5,778 residents. Villagers comprised 20.6% of Area residents in 2010.

### ■ **Age & Sex of the Population**

'Baby Boomers' (people aged 45 to 64 in 2010) and 'Millennials' (people aged 5-24 in 2010) were the largest generations, estimated to comprise 57.3% of Area residents between 2009 and 2013. The median age of a Grass Lake Villager was 38.2 years compared to 41.9 years for all Area residents. The Area's population was almost evenly split between male and female residents.

### ■ **Household & Family Composition**

Families comprised an estimated 75.1% of Area households between 2009 and 2013. Children were present in an estimated 33.7% of households. Single-person households comprised 22.2% of households. The average household size was 2.58 people as compared to 2.45 people in the Village.

### ■ **Racial & Ethnic Composition**

Race and ethnicity were not significant issues between 2009 and 2013 regarding recreation given the estimated homogeneity of the population.

### ■ **Disabilities of Residents**

Grass Lake Area residents with at least one disability between 2009 and 2013 comprised an estimated 9.0% of the population. It is also important to note that older residents are more apt to have a disability, including an ambulatory difficulty, than their younger neighbors.

### ■ Income

The median household (\$61,332) and family (\$71,354) incomes for the Grass Lake Area was greater than that for the average American household between 2009 and 2013. The Area's per capita income (\$28,816) was also greater than that for the entire nation. Incomes are lower in the Village.

## The Health of Jackson County Residents

Obesity describes ranges of weight that are above healthy guidelines given a certain height. Body Mass Index is used to calculate an individual's ratio of height to weight. Generally, a person with a Body Mass Index score of 25.0 or greater is considered obese.<sup>1</sup> In 2010, 31.1% of Michigan residents were considered obese (the tenth highest in the nation),<sup>2</sup> with 34% of adults in Jackson County reporting being obese.<sup>3</sup> According to a report published by Michigan State University's Institute for Public Policy and Social Research and Institute for Health Care Studies, being overweight or obese substantially increases the risk for cardiovascular disease, type 2 diabetes, hypertension, lipid disorders, stroke, gallbladder disease, osteoarthritis, sleep apnea, respiratory problems, psychological disorders, stress incontinence, and cancers of the endometrium, breast, prostate and colon.<sup>4</sup> In 2008, the Jackson Community Comprehensive Plan showed that a poor diet and physical activity were second only to tobacco as the greatest cause for actual death in the United States in 1990 and 2000. Furthermore, a publication by the World Health Organization states that physical inactivity and a poor diet are large contributors to overweight and obesity.<sup>5</sup> According to the National Center for Chronic Disease

---

<sup>1</sup> Centers for Disease Control and Prevention. (2012). Obesity and Overweight for Professionals: Adult: Defining – DNPAO - CDC. Retrieved from <http://www.cdc.gov/obesity/adult/defining.html>

<sup>2</sup> Centers for Disease Control and Prevention. (2014). Obesity and Overweight for Professionals: Data and Statistics -- DNPAO - CDC. Retrieved from <http://www.cdc.gov/obesity/data/adult.html>

<sup>3</sup> County Health Rankings. (2014). Adult obesity in Michigan | County Health Rankings & Roadmaps. Retrieved from <http://www.countyhealthrankings.org/app/michigan/2014/measure/factors/11/data>

<sup>4</sup> Kreulen, G. J. (2002). *Promoting healthy weight in Michigan through physical activity and nutrition (Informing the debate : health policy options for Michigan policymakers)*. East Lansing: Institute for Public Policy & Social Research and Institute for Health Care Studies at Michigan State University.

<sup>5</sup> World Health Organization. (2009). Unhealthy Diets & Physical Inactivity. Retrieved from [http://www.who.int/nmh/publications/fact\\_sheet\\_diet\\_en.pdf](http://www.who.int/nmh/publications/fact_sheet_diet_en.pdf)

Prevention and Health Promotion, 26% of Jackson County residents reported being physically inactive,<sup>6</sup> placing it in the top 25 counties in Michigan for this measure. These statistics point to a need for more active recreational opportunities in all communities. Those opportunities may include providing more walkable neighborhoods as well as the provision of actual recreational opportunities such as athletic fields (e.g., soccer, baseball, etc.) and courts (e.g., basketball, tennis, etc.) Factors of particular relevance to community growth, development, and planning contributing to unhealthy weight according to the 2006 Jackson Community Report Card produced by the United Way of Jackson County include:

- “Inadequate community infrastructure limits the ability of people to be active. These include lack of accessible indoor and outdoor exercise facilities, neighborhood sidewalks, walking paths, and bicycle trails. Additionally, inclement weather, lack of adequate recreational opportunities, fear of unsafe neighborhoods, and unattractive/unpleasant local environments may prevent people from exercising.”
- “Programs and policies are necessary to promote smart community growth and the establishment of urban and rural environments supportive of physical activity. Active community environments provide access to safe favorable conditions for physical activity and promote the development of social support networks that encourage activity.”

The Michigan State University Report: *Promoting Healthy Weight in Michigan Through Physical Activity and Nutrition* (Kreulen, 2002), recommends cooperation among state and local units of government and residents in the promotion of active environments, including the following actions.

- “Develop walkable communities by widening and maintaining or building sidewalks, safe roadway crossings, and aesthetically pleasing areas.”
- “Encourage bicycling by developing, maintaining, and promoting the use of bike paths.”
- “Require [that] all urban planning and re-design incorporate the concepts of active community environments and thereby promote physical activity.”

---

<sup>6</sup> County Health Rankings. (2014). Physical inactivity in Michigan | County Health Rankings & Roadmaps. Retrieved from <http://www.countyhealthrankings.org/app/michigan/2014/measure/factors/70/data>

Chapter 2

## **Administrative Structure**

Grass Lake Area Recreation Plan

*2016-2020 edition*

## Authorization

In response to identified recreation needs, the Grass Lake Township Board, the Grass Lake Village Council, and the Grass Lake Community Schools Board formed a Joint Recreation Committee to develop the *Grass Lake Area Recreation Plan* under the authority of Public Act 156 of 1917 (Recreation and Playgrounds). Grass Lake Charter Township also maintains its own parks and recreation committee under the authority of the legislation. The Act:

- “authorizes cities, villages, counties, townships, and school districts to operate systems of public recreation and playgrounds” (emphasis added) It also allows those entities to:
  - “operate a system of public recreation and playgrounds; acquire, equip and maintain land, buildings or other recreational facilities; employ a superintendent of recreation and assistants; vote and expend funds for the operation of such system.”
  - “operate such a system independently or they may cooperate in its conduct in any manner which they may mutually agree; or they may delegate the operation of the system to a recreation board created by any or all of them, and appropriate money, voted for this purpose, to such board.”
- The act also allows park systems to operate on “(1) property under its custody and management; (2) other public property;” and “(3) private property, with the consent of the owners.”

A copy of PA 156 of 1917 is available online at:

[http://www.legislature.mi.gov/\(jvpdab552sox\\_emek3mee3h55\)/documents/mcl/pdf/mcl-Act-156-of-1917.pdf](http://www.legislature.mi.gov/(jvpdab552sox_emek3mee3h55)/documents/mcl/pdf/mcl-Act-156-of-1917.pdf)

**Please note that other state enabling legislation allows for the joint provision parks and recreation facilities in addition to planning for them. The Township, Village, and Schools may choose to form one of those organizational arrangements in the future.**

## Organizational Structure

The following bodies are involved in the provision of municipal recreation:

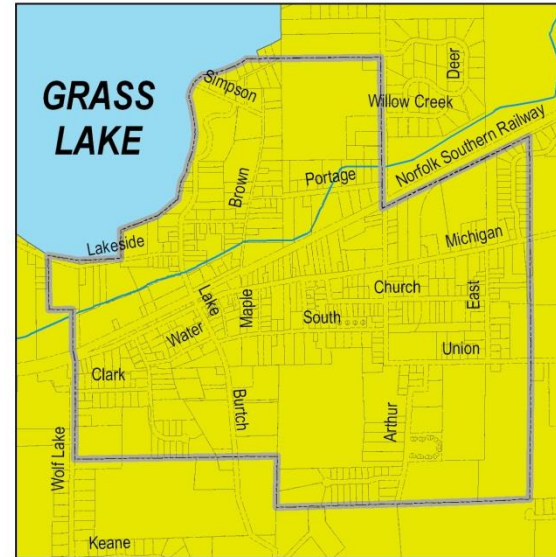
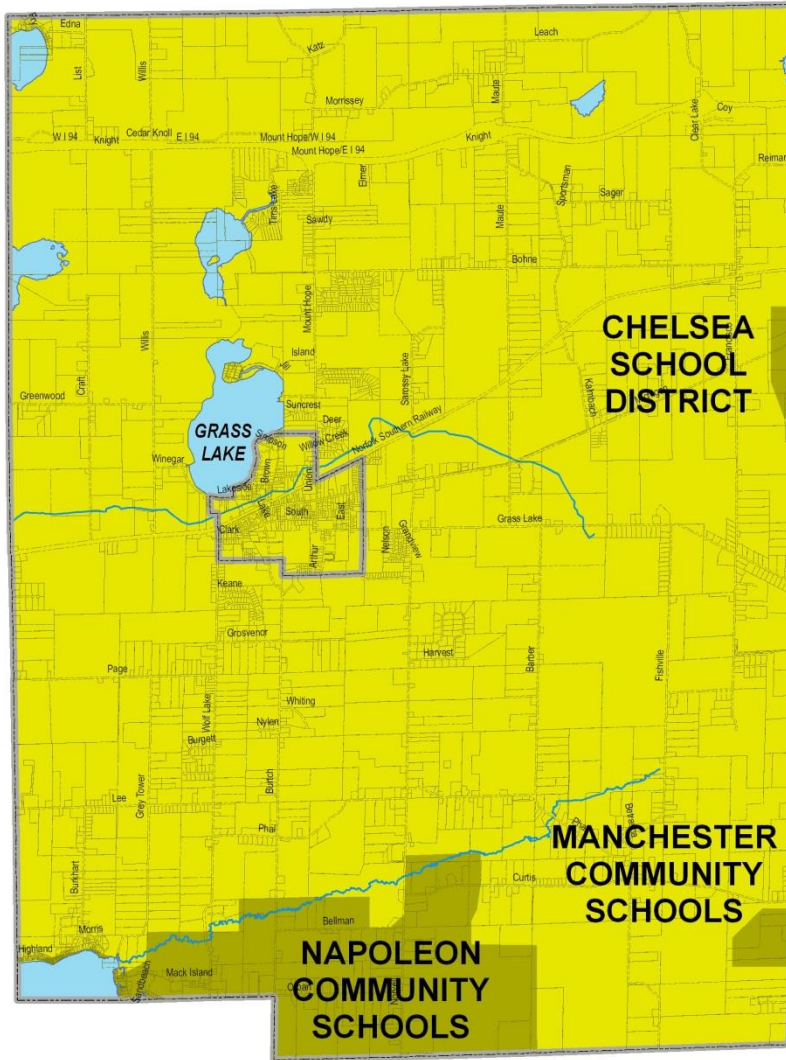
- **Grass Lake Charter Township.** A Recreation Board is responsible for planning, constructing, maintaining, programming, and administering the Township’s recreation facilities. The Board is also charged with studying various recreation needs, advising the Township Board on recreation issues, and making appropriate budget requests.

### GRASS LAKE CHARTER TOWNSHIP RECREATION STRUCTURE



The Recreation Board is comprised of the Township Supervisor and representatives from the GLSYL (Grass Lake Summer Youth League, the local AYSO (American Youth Soccer Organization) program, and local trail enthusiasts. Maintenance concerns brought before the Recreation Committee are addressed through the Township Supervisor. Recreational programs are coordinated through the various representatives serving on the Committee. The Township Board maintains final authority over Grass Lake Township’s facilities. The Township Board is comprised of a Supervisor, a Clerk, a Treasurer, and 4 Trustees. The Township utilizes volunteers for specific projects and programs.

- **Village of Grass Lake.** The Village of Grass Lake does not have a recreation committee but is developing a Village Events Park. The Village Council is comprised of a President and 6 Trustees. The Village may utilize volunteers for specific projects.
- **Grass Lake Community Schools.** Grass Lake Community Schools serve the overwhelming majority of the Grass Lake Area. Although it is not served by a recreation committee, it does provide extensive recreation facilities to its students and the community. This coordination is the responsibility of the School’s Community Services Director. The School Board is comprised of a President, a Vice-President, a Secretary, a Treasurer, and 3 Trustees. The Community Schools may utilize volunteers for specific projects.



**LEGEND**

-  GRASS LAKE COMMUNITY SCHOOLS
-  OTHER SCHOOL DISTRICTS

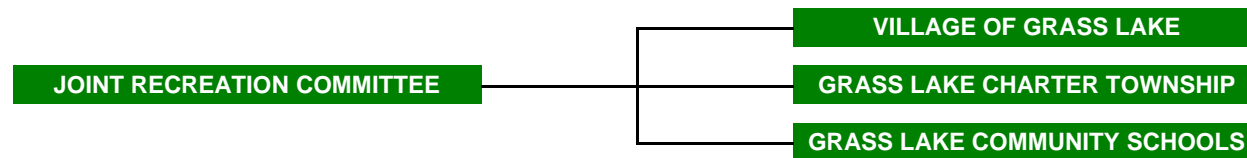


NOT TO SCALE

# SCHOOL DISTRICTS

- **Joint Recreation Planning.** The Joint Recreation Committee is responsible for the development of the Grass Lake Area Recreation Plan. The Joint Committee is also available to provide advice on recreation issues which impact the Village, the Township, and the Community Schools on an as needed basis. Membership is comprised of Grass Lake Township’s Recreation Board, 1 official from the Village of Grass Lake and 2 officials from Grass Lake Community Schools. Staff from the Region 2 Planning Commission assisted the Joint Committee in the development of this document.

**JOINT RECREATION STRUCTURE**



**Sources of Funding**

Grass Lake Charter Township, the Village of Grass Lake, and Grass Lake Community Schools identify several potential sources of revenue for its recreation facilities and programs:

- general tax fund dollars;
- grants awarded for specific projects; and
- donations from the general citizenry and philanthropic organizations.

General tax fund dollars are used for the maintenance and programming of the Township’s and Community School’s recreation facilities, as well as their administration (including the cost of producing this Plan). Grants are generally awarded for the acquisition of parkland and the development of a park or recreational facility (e.g., trails, playgrounds, picnic shelters, sports facilities, etc.). Donations to be used at the discretion of the Township or the Village or for a specific facility or program are also accepted. A portion of the local match required of most grants may also come from the general fund or donations. Grants for parks and recreational facilities are likely to come from several sources:

- **The Michigan Department of Natural Resources**
  - The Michigan Natural Resources Trust Fund
  - The Land and Water Conservation Fund<sup>1</sup>
- **The Michigan Department of Transportation**
  - The Transportation Alternatives Program (TAP)<sup>2</sup>
- **The Jackson County Road Commission**
  - The 1% annual allocation of state transportation (Act 51) funds for non-motorized facilities.

### **Recreation Budgeting**

The recreation budget for Grass Lake Charter Township is used almost entirely for the maintenance and programming of its recreation facilities. The operating budget is currently around \$30,000 a year. Capital outlays are also made for projects including the development of this document, the preparation of grant applications, and the planning and construction of new recreation facilities. Grass Lake Community Schools uses its general budget to maintain and program the recreation facilities which serve its student body and the community. The Village of Grass Lake does not currently maintain a recreation budget.

### **Relationships with Other Public Agencies**

Grass Lake Community Schools and Grass Lake Charter Township and are not the only suppliers of parks and recreational opportunities to Area residents.

#### **Other School Districts**

Napoleon Community Schools serve the neighborhoods around Wolf Lake and 2 other districts protrude into the eastern border of the Area. The Jackson County Intermediate School District (which includes Grass Lake

---

<sup>1</sup> This is a Federal program administered locally by the State of Michigan.

<sup>2</sup> This is a Federal program administered locally by the State of Michigan.

Community Schools) provides educational services to residents and local school districts. Please refer to Chapter 3 for a more detailed description of the recreational facilities and programs provided by schools.

**Local, County, State, and Private Parks and Recreation Facilities**

Jackson County and nearby cities and villages, as well as some townships, maintain parks. The State of Michigan also provides a variety of recreational facilities although none of those facilities are located in the study area). A variety of private entrepreneurs and quasi-public agencies also provide recreation facilities and programs in and around the study area.

Please refer to Chapter 3 for a more detailed description of recreation facilities in the Grass Lake Area.



Chapter 3

## **Recreation and Resource Inventories**

Grass Lake Area Recreation Plan

*2016-2020 edition*

**Parks and Recreation Facilities in the Grass Lake Area**

The recreation inventory is comprised of all of the parks and recreation facilities provided in the Grass Lake Area, not just those owned and managed by Grass Lake Charter Township, the Village of Grass Lake, or Grass Lake Community Schools. It is important to note that the wide variety of facilities is an incentive for people to visit the Area and to attract new residents and business. The facilities were identified through local knowledge and review of current and historic documents and maps.

Baseball and soccer facilities are located at the Grass Lake Community Sports & Trails Recreation Park and the Township Office/Park. The Township wishes to improve those facilities. Soccer fields (2), baseball diamonds (4), and multiuse trails, including boardwalks and bridges, are proposed for the Sports & Trails Recreation Park. A fishing dock/pier is proposed for the Township Office/Park.

The Grass Lake County Park hosts an annual regional event of the Michigan Hydroplane Racing Association and will host the Stock Outboard National Championships in 2017. The Grass Lake Depot and Whistle Stop Park preserves the train depot, provides needed downtown green space, and serves as a community activity center and exhibition hall. These parks (currently maintained by the Township) are examples of facilities capable of attracting people and businesses to the Grass Lake Area. The Village provides no recreational facilities at this time.

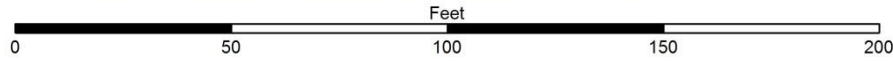
**PUBLIC PARKS AND RECREATION FACILITIES**

FACILITY	SIZE	DESCRIPTION	BFA
A GRASS LAKE COMM. SPORTS & TRAILS RECREATION PARK	62 ACRES	4 BASEBALL DIAMONDS AND 2 SOCCER FIELDS	4
B GRASS LAKE COUNTY PARK	9 ACRES	1 PAVILION & OTHER PICNIC FACILITIES, 2 TENNIS COURTS, 1 PLAYGROUND, A SWIMMING AREA, AND A BOAT LAUNCH	3
C GRASS LAKE DEPOT AND WHISTLE STOP PARK		EXHIBITION HALL AND COMMUNITY ACTIVITY CENTER IN A HISTORICAL DEPOT AND SCENIC PARK SETTING	2
D GRASS LAKE TOWNSHIP OFFICE/PARK	14 ACRES	3 BASEBALL FIELDS ,DISC GOLF, TRAILS, AND COMMUNITY CENTER	3

**GRASS LAKE COMMUNITY SPORTS  
& TRAILS RECREATION PARK**







WHISTLE STOP PARK



George Long Elementary contains playgrounds, a nature trail, and other open spaces. Walkable nature trails are located on the grounds of the Elementary and High Schools. The football and track stadium, located on the grounds of the Grass Lake Middle School, are open to the general public when not utilized by students.

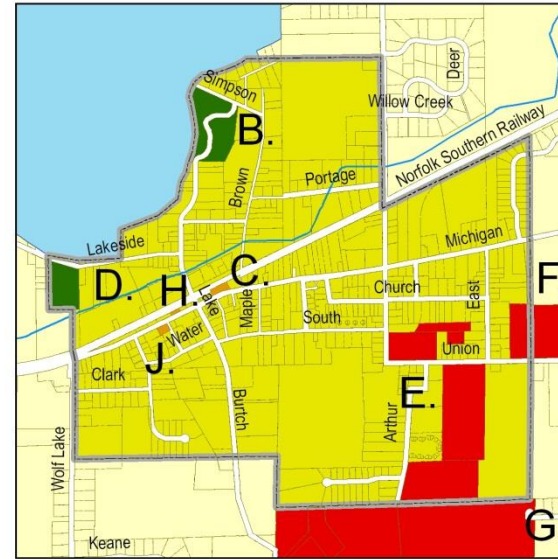
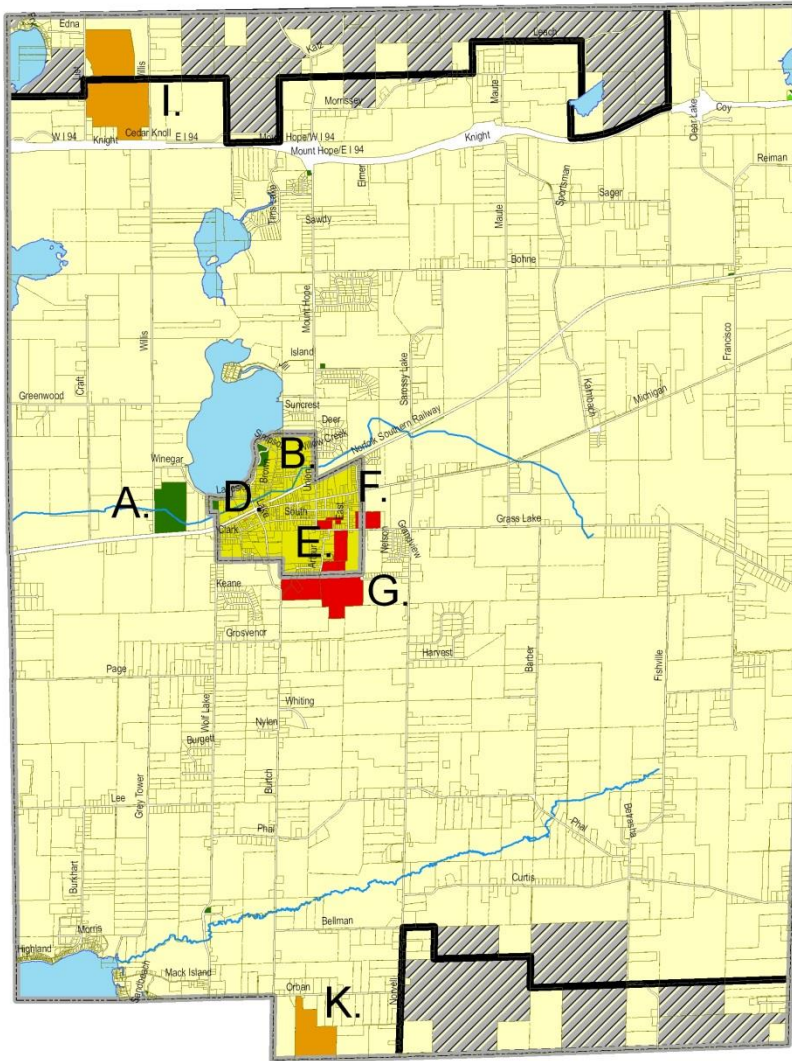
#### GRASS LAKE COMMUNITY SCHOOLS RECREATION FACILITIES

FACILITY	SIZE DESCRIPTION	BFA
E GEORGE LONG ELEMENTARY	N/A PLAYGROUNDS AND A ½-MILE NATURE TRAIL	4
F GRASS LAKE MIDDLE SCHOOL	N/A 3 BASEBALL FIELDS AND A FOOTBALL AND TRACK STADIUM	4
G GRASS LAKE HIGH SCHOOL	N/A 1-MILE NATURE TRAIL	4





The local branch of the Jackson District Library, golf courses, exercise facilities, and public campgrounds are great examples of quasi-public and private facilities whose mission directly serves the general public. The provision of needed open space and access to nature are often beneficial byproducts of the missions of nature centers and private campgrounds. It is also important to note that access to these resources already attracts seasonal residents and can be used to attract other visitors, potential residents, and new businesses to the Grass Lake Area.

#### QUASI-PUBLIC AND PRIVATE PARKS AND RECREATION FACILITIES

FACILITY	SIZE DESCRIPTION	BFA
H JACKSON DISTRICT LIBRARY	N/A LIBRARY COLLECTION	
I CALDERONE GOLF CLUB	N/A 18-HOLES IN AN OPEN LINKS STYLE SETTING	
J CURVES	N/A FITNESS AND WEIGHT LOSS CENTER FOR WOMEN	
K APPLE CREEK CAMPGROUND	N/A RECREATIONAL BUILDING, NATURE TRAIL, POOL, BALL FIELD, PICNIC TABLES, PLAY EQUIPMENT, AND HORSESHOES	



**LEGEND**

-  PUBLIC PARKS AND RECREATION FACILITIES
-  GRASS LAKE COMMUNITY SCHOOLS RECREATION FACILITIES
-  QUASI-PUBLIC AND PRIVATE PARKS AND RECREATION FACILITIES
-  STATE GAME/RECREATION AREAS



NOT TO SCALE

# RECREATION

**Park Standards and Types**

A park and recreation plan should also recognize and use appropriate park standards. The National Parks and Recreation Association (NPRA) recommends a minimum of 10 acres per 1,000 persons (please see Appendix C). The Grass Lake Area exceeds the need for approximately 51 acres in 2005 and 60 acres in 2020. The recreation facilities provided by the Schools, the Township, and the County generally function as a community and/or regional parks in the Grass Lake Area.

**Grant-Assisted Parks and Recreation Facilities**

Grass Lake Charter Township was awarded 2 past grants through the Michigan Department of Natural Resources. The Township received a \$28,500.00 grant in 1993 to acquire the property for the Grass Lake Community Sports & Trails Recreation Park. A 1977 \$5,034.50 grant funded the construction of 2 tennis courts at the Township Office. The Village of Grass Lake has not been awarded any grants through the Michigan Department of Natural Resources.

**RECREATION GRANT HISTORY**

PARK NAME	PROJ. NO.	YEAR	USAGE
GRASS LAKE COMM. SPORTS & TRAILS RECREATION PARK	TF-93-326	1993	THE 58 ACRES OF LAND ACQUIRED WITH THE GRANT IS CURRENTLY USED AS A PARK
GRASS LAKE TOWNSHIP OFFICE/PARK	26-01023B	1977	THE TENNIS COURTS CONSTRUCTED WITH THE GRANT WERE REPLACED BY A BASEBALL FIELD

**Barrier-Free Access**

It is important that recreation facilities be accessible to people with disabilities. After all, 14% of Grass Lake Area residents had at least one disability in the Year 2010. Each of the recreation facilities operated by Grass Lake Charter Township was also rated according to their level of barrier free access.<sup>1</sup> The number listed under the BFA column in that table equates to the barrier-free rating listed below:

<sup>1</sup> The analysis of barrier free access was provided by the Joint Recreation Committee, based upon its knowledge of the parks and understanding of barrier-free access. A professional analysis may produce different results.

**BARRIER FREE ACCESS (BFA) ANALYSIS**

<b>KEY</b>	<b>DESCRIPTION</b>
1 =	NONE OF THE FACILITIES/PARK AREAS MEET ACCESSIBILITY GUIDELINES
2 =	SOME OF THE FACILITIES/PARK AREAS MEET ACCESSIBILITY GUIDELINES
3 =	MOST OF THE FACILITIES/PARK AREA MEET ACCESSIBILITY GUIDELINES
4 =	THE ENTIRE PARK MEETS ACCESSIBILITY GUIDELINES
5 =	THE ENTIRE PARK WAS DEVELOPED/RENOVATED USING THE PRINCIPAL OF UNIVERSAL DESIGN

**Regional Parks and Recreation Facilities**

A variety of other public agencies and private entrepreneurs also provide recreational opportunities to Grass Lake Area residents. It is important to note that the availability of nearby regional parks and recreation facilities is an incentive for people to visit the Area and to attract new residents and business.

**State Parks**

The State of Michigan maintains a number of recreational facilities within Jackson County. The Department of Natural Resources maintains a state park at the border with Lenawee County. The Waterloo State Recreation Area, which extends into the Township from the north, offers hiking and equestrian trails throughout its 10,000 plus acres. The Gerald E. Eddy Discovery Center, located within the Waterloo State Recreation Area, has a main exhibit room where kids and families can discover that geology is fun. The Sharonville State Game Area, which extends into the Township from the south, offers a variety of hiking and riding trails, along with winter sports. Other state parks and state game and recreation areas are also located in the surrounding counties.

**STATE OF MICHIGAN RECREATIONAL FACILITIES**

<b>STATE PARKS</b>	<b>STATE GAME &amp; RECREATION AREAS</b>
WALTER J. HAYES STATE PARK	SHARONVILLE STATE GAME AREA
	WATERLOO STATE RECREATION AREA

**Other County Parks**

The County provides a wide variety of regional recreational facilities such as winter sports areas, swimming beaches, and modern campgrounds including Grass Lake County Park. Surrounding counties and other providers also maintain park systems.

**JACKSON COUNTY PARK INVENTORY MATRIX**

	Park	Greenspace	Water Features	Benches	18-hole golf course	9-Hole Golf Course	Driving Range	Modern Campground <sup>①</sup>	Ball Diamonds	Volleyball Court	Tennis Court	Basketball Court	Playground/Equipment	Winter Sports <sup>②</sup>	Restaurant/Meetings	Restrooms	Recreation Center/Gym	Trails/Paths/Sidewalks	Picnic Shelter/Pavilion	Picnic Area	Grills	Monuments/Markers	Swimming Beach	Boat Launch	Fishing	
1	Clark Lake	•	•	•												•	•								•	
2	Clear Lake	•	•																							
3	Gillett's Lake	•	•	•								•	•													
4	<b>Grass Lake</b>	•	•	•							•		•			•			•	•			•	•	•	•
5	Lime Lake	•	•																							•
6	Little Wolf Lake	•	•	•																						
7	Minard Mills	•	•	•																						•
8	Pleasant Lake	•	•	•				•				•				•		•								•
9	Portage Lake	•	•																							•
10	Round Lake	•	•																							•
11	Alfred A. Snyder	•	•	•																						•
12	Sparks Foundation	•	•	•	•	•	•		•		•			•	•	•		•				•				•
13	Swains Lake	•	•	•				•				•				•		•								•
14	Vandercook Lake	•	•	•					•							•										•
15	Vineyard Lake	•	•	•																						•

① Sixty modern campsites with water and electricity; hot showers, restrooms, a sanitary dump station & water.  
 ② Sledding & toboggan hill, skating pond & warming house, cross country skiing.

**Other Local Parks**

Nearby cities and villages, as well as some townships, also provide parks and recreational facilities for their residents. Larger communities often host extensive park systems with regional facilities such as Jackson's Ella Sharp Park. Smaller cities, villages, and townships may also provide a small number of recreation facilities.

**Colleges and Universities**

Institutions of higher learning provide access to collegiate sports and athletic facilities. Grass Lake area residents can also avail themselves of the recreational facilities and programs hosted by the colleges and universities located in Jackson County:

**Spring Arbor University** – Spring Arbor University hosts the *Ganton Art Gallery*, “The gallery is one of the largest, single-room galleries in Michigan.”<sup>2</sup> The University also provides access to collegiate sports and athletic facilities.

**Jackson Community College** – Jackson Community College hosts the *George E. Potter Center*, which “is comprised of the most versatile and complete performing arts complex in the area.”<sup>3</sup>

**Private Parks and Recreation Facilities**

A wide variety of other private entities also provide recreational facilities.

**Camps** – Private camps, including the YMCA's Camp Storer, and the Girl Scout's Camp O' the Hills, are located in Jackson County, making them easily accessible to Grass Lake Area residents. In fact, the Boy Scout's Camp Teetonkah and Camp Fa-Ha-Lo are located in Grass Lake Charter Township. Camp Teetonkah contains camping, boat launch, fishing, swimming, playground, mini-golf ball diamond, picnic tables, and a community center. Camp Fa-Ha-Lo contains camping, hiking, boating, fishing, swimming, cabin rental, and archery.

---

<sup>2</sup> Arts at the Arbor page on Spring Arbor University's website -- <http://www.spring.arbor.edu/Brix?pageID=11863>

<sup>3</sup> The George E. Potter Center page on Jackson Community College's website -- <http://www.jccmi.edu/events/pottercenter/theatres.htm>

**Lefglen Nature Sanctuary** – The 210 acre reserve contains wooded uplands, oak groves, cattail marches, swales, lakes, a tamarack bog and a flowering prairie.

**Other Golf Courses** – There are 21 public golf courses within 20 miles of the Village of Grass Lake, including the Calderone Farms Golf Club, according to GolfLink™. There are an additional 29 public courses within 30 miles of the Village.<sup>4</sup>

**Bowling Alleys** – There are 7 bowling alleys within 20 miles of the Village of Grass Lake, according to Mapmuse.<sup>5</sup> Most of them are located in Jackson County, but 2 are located in Ingham or Washtenaw counties.

**Sidewalks and Trails** – Several Village of Grass Lake streets include public sidewalks, which provide non-motorized access to a majority of its recreation facilities. Plans for approximately 2.4 mile of non-motorized trails to be constructed within the Community Sports & Trails Recreation Park are planned as well as a connection to approximately 2 miles of trails within the Village. Future plans include connecting the Township, School, and Village trails with the countywide framework of trails proposed in the *2002 Regional Trailway Study* (please see Appendix D), the trails proposed in the *Heart of the Lakes Area Recreation Plan*, and the proposed trail to the future Leoni Millpond Park.

### National and State Historical Sites

The Grass Lake Area contains three historic sites that have state and/or national significance. There are also another fifty-four sites throughout Jackson County.

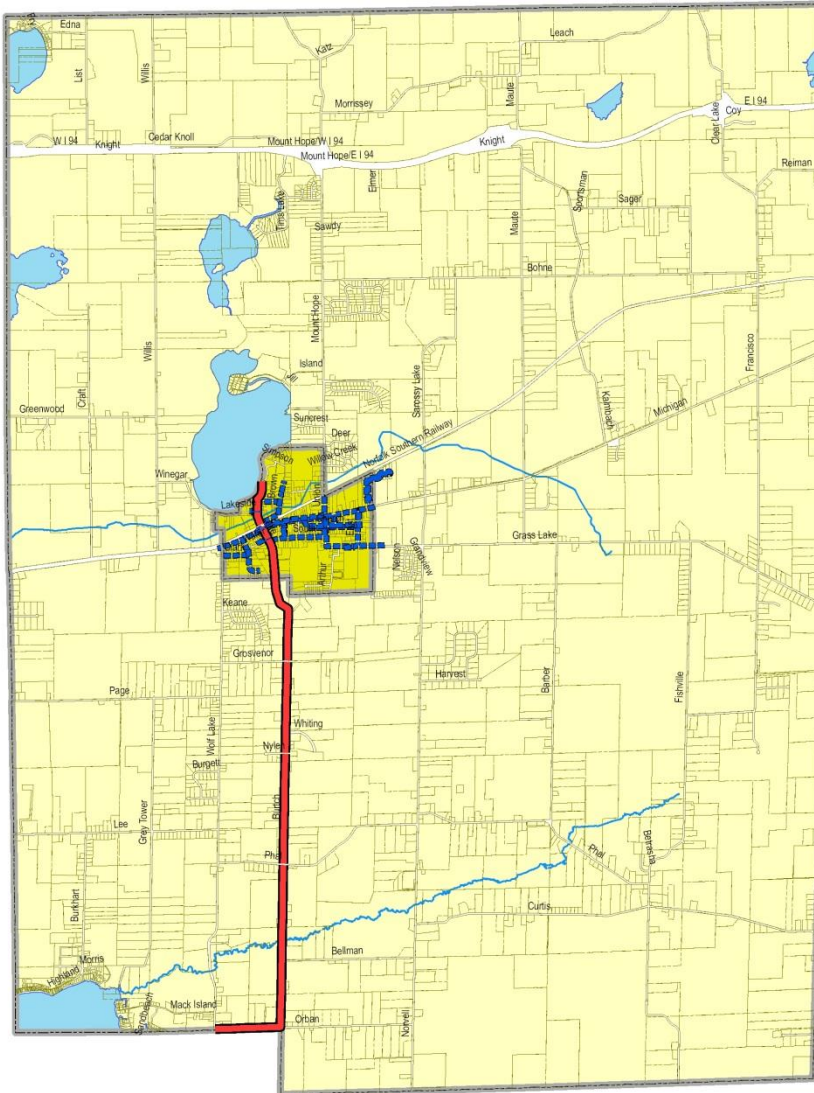
#### NATIONAL AND STATE HISTORICAL SITES

STRUCTURE	ADDRESS/LOCATION	REGISTERS*
SCHOOLHOUSE SQUARE APARTMENTS	661 E MICHIGAN AVE	NR
MICHIGAN CENTRAL RAILROAD DEPOT	210 E MICHIGAN AVE	SR HM
POTTER FARM	1916 NORVELL RD	SR

\*NR = NATIONAL REGISTER ; SR = STATE REGISTER; AND HM = HISTORIC MARKER

<sup>4</sup> <http://www.golfink.com>

<sup>5</sup> <http://www.mapmuse.com>



**LEGEND**

--- SIDEWALKS

— TRAIL EXTENSION FROM THE HEART OF THE LAKES AREA



NOT TO SCALE

# TRAILS & SIDEWALKS

## **Recreational Programming**

Grass Lake Township's summer youth league baseball program utilizes the baseball fields located in the Township Office/Park and the Grass Lake Community Sports & Trails Recreation Park. The local AYSO (American Youth Soccer Organization) program utilizes the soccer pitches that are also located in the Sports & Trails Recreation Park and the Township Office/Park. Many Grass Lake School athletic events, plays, and other student programs are open to spectators and audiences from the general public.

## **Resource Inventory**

In addition to recreation facilities, the Grass Lake Area is also home to a wide variety of cultural and natural resources.

### **Topography**

The highest elevation in the Grass Lake Area reaches approximately 1,011 feet above sea level and the lowest point is approximately 930 feet above sea level. Generally, the township's land surface is level to gently rolling, and contains rolling hills and low board valleys.

### **Soils**

Soils in the Grass Lake Area are primarily comprised of the Spink-Ormas Houghton and the Boyer-Oshtemo-Houghton soil associations, which are deep, nearly level to rolling, and vary from well-drained to very poorly drained, with sandy, loamy and mucky soils which were formed in glaciofluvial deposits or in organic material. Soils in the Boyer-Hillsdale-Houghton association, found along the northern border of the Area, are deep, rolling to very steep to nearly level, well drained to very poorly drained loamy and mucky soils.

### **Water Resources**

There are a total of 717 acres of water area in the Grass Lake Area, including lakes, streams, and wetland areas. Major bodies of water include Grass, Tims, Notten, and parts of Goose, Little Pleasant, and Wolf Lakes. Fish resources include: bluegill, sunfish, pike, perch, and a variety of bass. Wetlands are also scattered across the Area. The water in these areas is rich in nutrients. Subsequently, they contain many types of insects, fish,

waterfowl, frogs, and other animals. They also serve to replenish the water table. Preservation of wetlands for both recreational/educational uses as well as for groundwater protection is critical. They provide recreation in the form of hunting and fishing, both of which have an economic benefit to the community. In addition, wetlands function as areas for education, such as nature trails, hiking, boating, bird-watching, and photography.

**Woodlands**

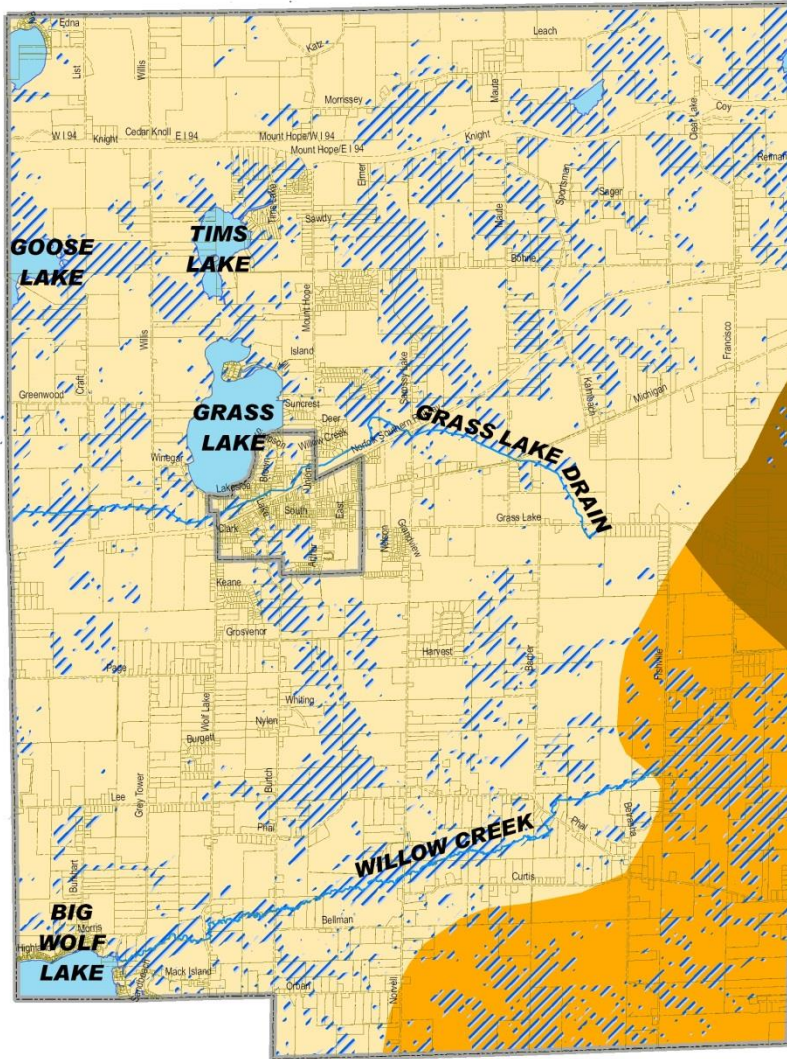
Woodlots of 40 or more acres are considered a major natural resource. Due to the length of time that trees require to reach maturity, much care should be given to their protection. The type and quality of trees are evaluated before any wooded areas are harvested. The most significant stands of hardwood trees in Grass Lake Charter Township are in the southern portion of the township.

**Greenways**

The Jackson Community Comprehensive Plan “identifies a network of greenways proposed throughout Jackson County. This network generally follows wetland areas, drainage ways, and forested lands. The network recognizes these areas as a part of Jackson County’s natural system which should be preserved. The preservation of this system helps to assure high quality surface water, wildlife habitat and movement, diversity, and can be used to help define urban growth.” The following map shows the greenways recommended for the Grass Lake Area. Please see Appendix B of this Plan in order to view the entire greenways map and the supporting text.

**Land Use**

The Jackson Community Comprehensive Plan includes a generalized plan for future development in Jackson County (please see Appendix B for a future land use map for Jackson County and the accompanying text). Residential neighborhoods are planned around the Village of Grass Lake, as well as a limited commercial district. Industrial development is also planned along interstate 94 (I94), north of the Village. Much of the Township is located in the County’s Agricultural Preservation Area.



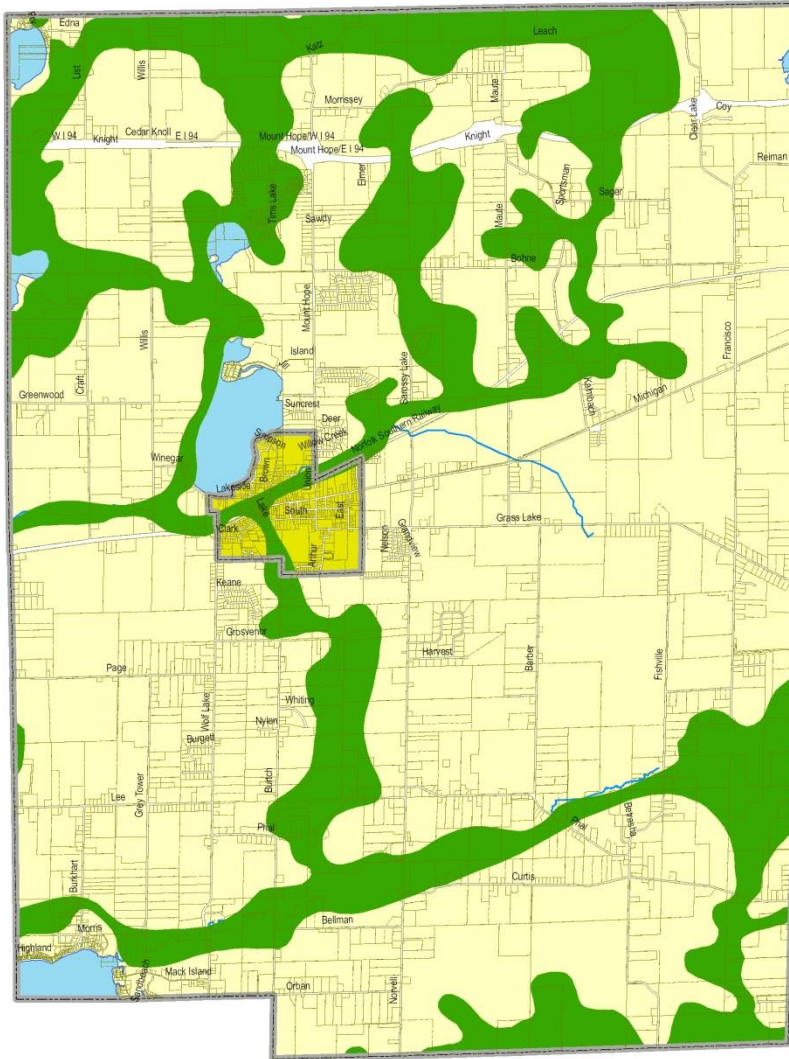
**LEGEND**

-  LAKES & PONDS
-  RIVERS & STREAMS
-  WETLANDS
-  UPPER GRAND WATERSHED
-  RAISIN WATERSHED
-  HURON WATERSHED






NOT TO SCALE

# HYDROLOGY



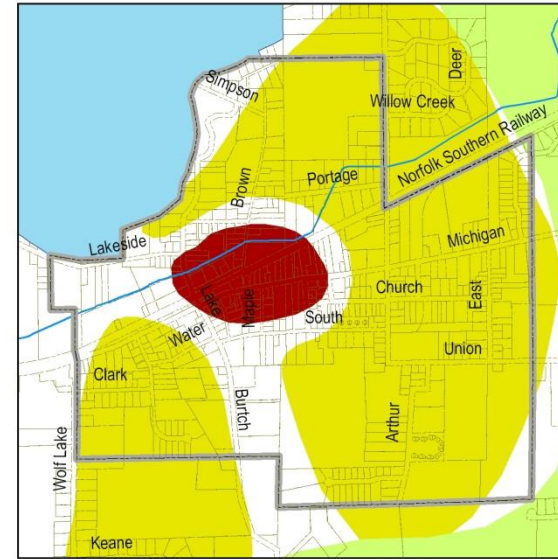
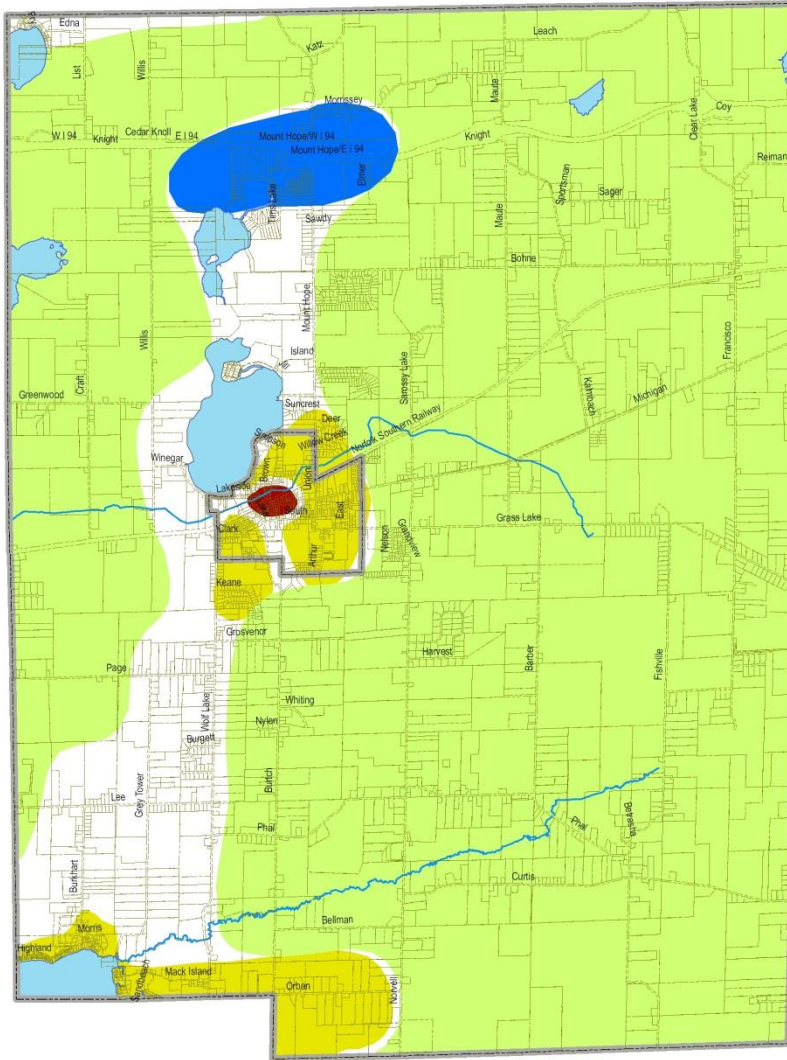
**LEGEND**

-  POSSIBLE GREENWAYS
-  LAKES & PONDS
-  RIVERS & STREAMS



NOT TO SCALE

JACKSON COMMUNITY  
COMPREHENSIVE PLAN  
**GREENWAYS**



**LEGEND**

- COMMERCIAL LAND USES
- INDUSTRIAL LAND USES
- RESIDENTIAL LAND USES
- AGRICULTURAL PRESERVATION AREA
- LAKES & PONDS
- RIVERS & STREAMS



NOT TO SCALE

JACKSON COMMUNITY COMPREHENSIVE PLAN  
**FUTURE LAND USE**

Chapter 4

**Descriptions of the Planning and Public Input Processes**

Grass Lake Area Recreation Plan

*2016-2020 edition*

## Description of the Planning Process

The development of this edition of the Grass Lake Area Recreation Plan included the following steps:

1. The Township recognized the need to update the Recreation Plan and invited the Village and the Community Schools to participate, increasing the scope of the plan to cover all jurisdictions. A Joint Recreation Planning Committee was formed to oversee the development of the Plan.
2. Region 2 Planning Commission staff was hired to review the development of the 2016-2020 edition of the Recreation Plan.
3. A special meeting of the Township Board was held on the Community Sports & Trails Recreation Park on **March 18, 2015**. The meeting was open to the public and advertised.
4. A survey was included in the Grass Lake Times, published on **February 12, 2015**.
5. The Joint Recreation Planning Committee utilized the input collected from the public involvement efforts to revise and update the goals and objectives and action program included in the last edition of the Recreation Plan.
6. The Recreation Planning Committee provided the plan for public review from **March 23 through April 23, 2015** and held a public hearing on **April 28, 2015**. The Plan was approved by the Commission and recommended for adoption by the Village Council after the public hearing was closed (please see Appendix E).
7. The School Board adopted the Plan on **June 15, 2015**, the Township Board adopted the Plan on **July 14, 2015**, and the Village Council adopted the Plan on **May 5, 2015** (please see Appendix E).

## Description of the Public Input Process

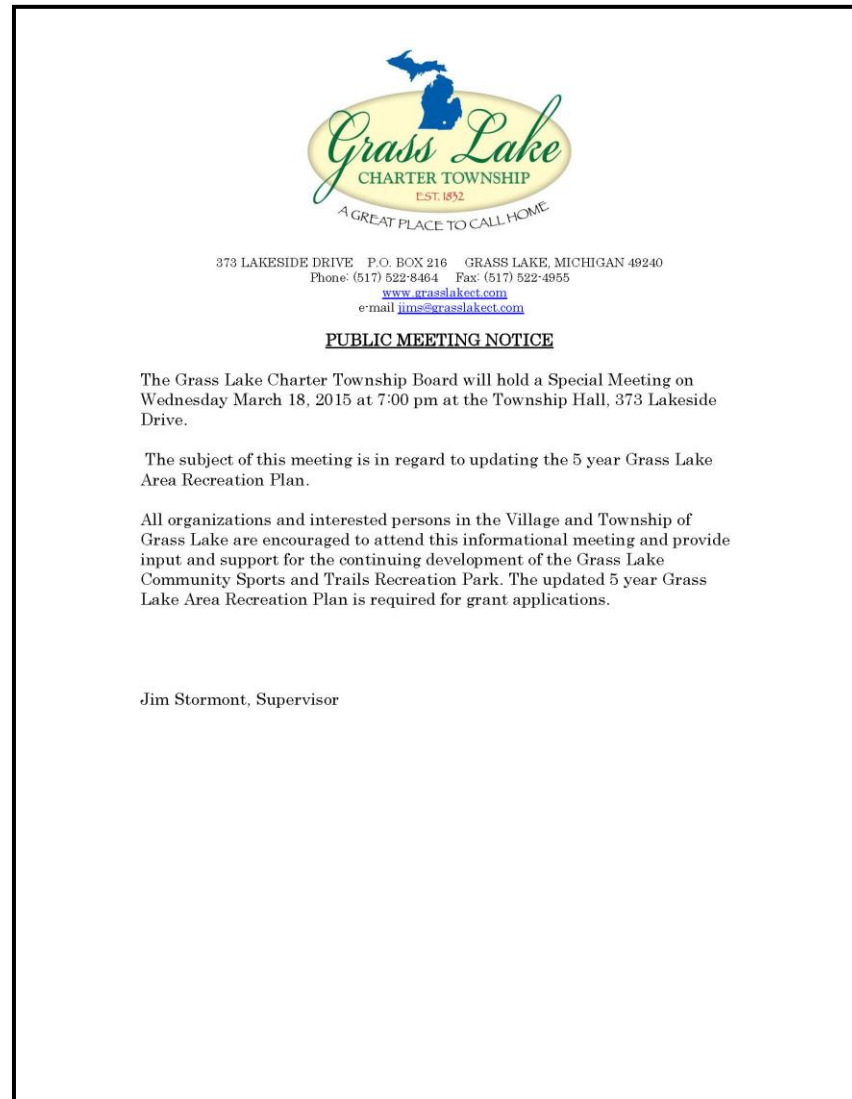
A variety of methods were employed to incorporate public input into the development of this recreation plan:

**Public Meeting before the Township Board**

A special meeting of the Grass Lake Township Board was held on **March 18, 2015**. The subject of the meeting concerned the Community Sports & Trails Recreation Park. The update of the Recreation Plan, needed to apply for additional state recreation grants, was also discussed. A notice of the meeting was distributed throughout the Area (please see the notice).

Supervisor Stormont gave an update from the time of purchase of the land for the Community Sports & Trails Recreation Park from the Zick family in February of 1997 to the present.

The comments from all present were very supportive of the Community Sports & Trails Recreation Park and willing to help where ever possible to get it fully developed.



**Recreation Survey**

A short 8-question survey was included in *The Grass Lake Times* which was published on **February 12, 2015**. A total of 69 surveys were returned.

The first question concerned the adequacy of recreational facilities and opportunities available to Area residents. Recreational opportunities were considered adequate by approximately 51% of respondents (n=67). However, approximately 45% indicated that they are not adequate.

	YES	NO	N/A
<b>1. Do you believe that adequate recreational opportunities and facilities are provided to community residents?</b>	34 50.7%	30 44.8%	3 4.5%

The second question concerned the appropriate priority the Village and Township should place on parks and recreation. Approximately 88% of respondents (n=68) agreed that a higher priority should be placed on parks, non-motorized trailways, and recreation. However, approximately 7% of respondents did not agree.

	YES	NO	N/A
<b>2. Do you believe that the local governments need to place a higher priority on parks, non-motorized trailways, and recreation?</b>	60 88.2%	5 7.4%	3 4.4%

The third question concerned the importance of recreation programs to the future of the Area. Recreational facilities and programing for seniors, adults, and youth were considered to be important by 100% of respondents (n=67).

	YES	NO	N/A
<b>3. Do you believe recreational facilities and programing for seniors, adults, and youth are important to the future of the Grass Lake Community?</b>	67 100.0%	0 0.0%	0 0.0%

The fourth question concerned the awareness of respondents to current recreation plans. Approximately 54% of respondents were aware of current plans. However, approximately 46% were not aware.

	YES	NO	N/A
<b>4. Are you aware of the current recreation plans for the Grass Lake Community?</b>	37	31	0
	54.4%	45.6%	0.0%

<b>5. How many times have you participated in or visited our community recreational activities/facilities in the past 12 months?</b>		
<b>0 Times</b>	10	14.7%
<b>1-10 Times</b>	35	51.5%
<b>11-20 Times</b>	13	19.1%
<b>20+ Times</b>	10	14.7%

The fifth question concerned the number of times respondents visited an Area park or recreation facility within the last year. Approximately 51% of respondents (n=68) visited between 1 and 10 times. Approximately 19% visited between 11 and 20 times and 15% visited more than 20 times. However, approximately 15% did not visit a park or recreation facility.

The sixth question concerned support for a millage to further develop, maintain, and enhance parks and recreation in the Area. Approximately 74% of respondents (n=66) indicated support for a millage. However, approximately 12% opposed a millage. It should also be noted that approximately 14% responded N/A.

	YES	NO	N/A
<b>6. Would you support a recreation millage to further develop, maintain and enhance the community parks, non-motorized trailways, and recreation?</b>	49	8	9
	74.2%	12.1%	13.6%

The seventh question concerned voting activity within the last year. Approximately, 90% of respondents (n=67) voted in the last year. However, approximately 12% did not vote

	YES	NO	N/A
<b>7. Have you voted in the past 12 months?</b>	<b>60</b>	<b>6</b>	<b>1</b>
	<b>89.6%</b>	<b>9.0%</b>	<b>1.5%</b>

**8. What types of additional recreation facilities and services would you like to see provided for community residents?**

#1 non-motorized trailways	35	17.0%
#2 kayak/bicycle rentals	25	10.0%
#3 dog park	23	11.2%
#4 basketball courts	21	10.2%
#5 ice skating rink	18	8.7%
#6 tennis courts	15	7.3%
#7 adult softball league	14	6.8%
#8 sand volleyball courts	12	5.8%
#9 soccer league	11	5.3%
#10 skate park	10	4.9%
#11 baseball league	9	4.4%
#12 football league	6	2.9%
#13 adult basketball league	10	2.6%
#14 adult soccer league	10	2.6%

The eighth question concerned possible recreation facilities and services for the Area. Respondents were able to choose from the following:

- Non-motorized trailways
- Kayak and/or bicycle rentals
- Dog park
- Ice skating rink
- Skate park
- Basketball, volleyball, and tennis courts
- Soccer, baseball, football, adult softball, adult soccer, and adult basketball leagues
- Other \_\_\_\_\_

Respondents were able to choose as many of the facilities and services as they desired. Multiuse trails were the #1 selection. Kayak and/or bicycle rentals were the #2 selection. A dog park was the #3 selection. Basketball courts were the #4 selection. An ice skating rink was the #5 selection.

**Grass Lake Charter Township and the Village of Grass Lake will continue to survey residents. That information may alter the types of recreation facilities proposed for Area parks.**

## Chapter 4

### One Month Review Period

The recreation plan was submitted for public comment for a one month period beginning on **March 23, 2015** and ending on **April 23, 2015**. A notice announcing the meeting was published in the Grass Lake Times on **March 23, 2015** (please see the notice). The plan was available for review in the offices of the Township, the Village, the School Board, and the Grass Lake Branch of the Jackson District Library. The recreation plan was also available for review online at the Village website ([www.villageofgrasslake.com](http://www.villageofgrasslake.com)), the Township website ([www.grasslakect.com](http://www.grasslakect.com)), the Community Schools website ([www.grass\\_lake\\_schools.com](http://www.grass_lake_schools.com)), and the Region 2 website ([www.region2planning.com](http://www.region2planning.com)).

### Commission Meetings

All meetings of the Joint Recreation Planning Committee, the Township Board, the Village Council and the School Board were open to the public.

### Regional Coordination

The required transmittal letters were sent to the Jackson County Parks Department and the Region 2 Planning Commission (please see the letters).

## Descriptions of the Planning and Public Input Processes

### Grass Lake Charter Township Recreation Plan

#### PUBLIC NOTICE

Grass Lake Charter Township, the Village of Grass Lake, and Grass Lake Community Schools are finalizing a jointly prepared recreation plan which makes them eligible to apply for grants through the Michigan Natural Resources Trust Fund (MNRTF). The document will also be used as a fundraising tool for proposed projects as well as a promotional tool for the Grass Lake Area.

The Grass Lake Charter Township Recreation Plan will be available for review by the general public during the following one-month public comment period:

**MARCH 23, 2015 THROUGH APRIL 23, 2015**

The Recreation Plan will be available for review in the administrative offices of the Village, the Township, the Grass Lake Community Schools, and the Grass Lake Branch of the Jackson District Library during their normal hours of operation. The document will also be available for review 24 hours a day online at the following websites:

GRASS LAKE CHARTER TOWNSHIP – [WWW.GRASSLAKECT.COM](http://WWW.GRASSLAKECT.COM)

VILLAGE OF GRASS LAKE – [WWW.VILLAGEOFGRASSLAKE.COM](http://WWW.VILLAGEOFGRASSLAKE.COM)

GRASS LAKE COMMUNITY SCHOOLS – [WWW.GRASSLAKESCHOOLS.COM](http://WWW.GRASSLAKESCHOOLS.COM)

REGION 2 PLANNING COMMISSION – [WWW.REGION2PLANNING.COM](http://WWW.REGION2PLANNING.COM)

Please direct your comments on the Grass Lake Charter Township Recreation Plan to:

JIM STORMONT, SUPERVISOR  
PHONE - (517) 522-8464 EXT. 124  
FAX - (517) 522-4955

You are also invited to attend, and provide testimony, during the Public Hearing on the Grass Lake Charter Township Recreation Plan scheduled for:

TUESDAY,  
APRIL 28<sup>TH</sup> @ 6:00 PM  
GRASS LAKE TOWNSHIP OFFICE  
373 LAKESIDE DRIVE

**Public Hearing**

A public hearing on the recreation plan was held on **April 28, 2015** at 6:00 pm at the Grass Lake Township Office, during a meeting of the Joint Recreation Planning Committee. A notice announcing the meeting was published in the Grass Lake Times on February 19, 2015 (please see the public notice). The meeting took place prior to the vote on the resolution recommending adoption of the Grass Lake Area Recreation Plan by the Village Council, Township Board, and Community Schools Board (please see the meeting minutes).

**Other Planning Efforts**

Comprehensive/master and other recent planning efforts in the Grass Lake Area (each of which included a public involvement component) often included a recreation component:

**Jackson Community Comprehensive Plan** — “The purpose of [the Jackson Community Comprehensive Plan] is to establish policies to guide the future growth and development of the Jackson Community. These policies, established at the community-wide level, are intended to assist local units of government, including the County’s villages, townships, and the City of Jackson as they develop, amend, and implement their community plans, and zoning ordinances.” A total of 16 goals and their associated policies and actions were developed. Several of those goals had a recreation component (please see Appendix B for a full listing of the policies and actions associated with the goals):

- Create a Walkable Community
- Historic Preservation
- Culture
- Preservation of Open Space

**Jackson County Regional Trailway Study 2002** — The Jackson County Trailway Committee (JCRTC) was initiated by residents of Jackson County active in the development of Trailways. The process of developing the Trailway Vision Plan began with two public meetings. Both meetings provided information to the public and were intended to gain input to guide the vision plan. The Trailway Vision Plan is a map of Jackson County showing potential trail routes. No trails proposed in that study traversed either the Village of the Township. However, there is the potential for trails within the Township and/or the Village to connect to non-motorized fa-

ilities proposed to the north, west, and south (please see Appendix D for a detailed summary of the entire Study).

**2015 – 2019 City of Jackson and Jackson County Joint Recreation Plan** — The City and County of Jackson developed its recreation plan in 2015. The following objectives from that report are pertinent to the Grass Lake Area:

- **Goal 1:** Develop lines of communication, collaboration, and cooperation with other local communities and recreation providers.
- **Goal 2:** Develop a non-motorized trail network.
- **Goal 3:** Renovate existing parks and recreation facilities.
- **Goal 4:** Provide recreation programs and events.



Chapter 5

## **Goals and Objectives**

Grass Lake Area Recreation Plan

*2016-2020 edition*

## Goals and Objectives

The following goals and objectives were developed for the recreation plan:

### Goal #1

Develop designated park lands to provide all Grass Lake Area residents with recreation facilities that meet acceptable standards, thus providing public outdoor recreation opportunities while also preserving the open space and natural features of the land retained for these purposes.

- Maintain physical quality of existing facilities through an appropriate and adequate repair and maintenance program at municipal and school facilities.
- Build new recreation facilities to the standards of the Americans with Disabilities Act (ADA) and renovate existing facilities to those standards where possible.
- Continue planning/development of a 1½ mile trail connecting the Sports & Trails Recreation Park on the west side of the Township with the Leoni Millpond Park (in Leoni Township) along the Grand River head water creek to the west of the Township.
- Support land use planning efforts consistent with the master plans in the Grass Lake Area which encourage preservation of valuable farmland, open space, wetlands, and other sensitive areas.
- Develop cooperation between the Village and the Jackson County Parks Department for developing and/or renovating recreation facilities in the Grass Lake County Park.
- Continue the development of the Grass Lake Community Sports & Trails Recreation Park as proposed in its master plan, and as proposed by the MSU Small Town Design Initiative.
- Provide opportunities for a healthier lifestyle through exercise.

### Goal #2

Provide public recreation facilities and non-motorized trails and coordinate recreation programs.

- Adopt the multi-jurisdictional park and recreation commission as the Grass Lake Area's advisory body to coordinate facility development, scheduling of events and promotion among the township, village, school district, and quasi-public and private commercial facilities.

- Meet the facility needs for local programming such as soccer and baseball/softball teams for all ages, and tournaments at township and school facilities.
- Work towards providing the proposed recreation facilities included in this five-year plan, with annual reviews of the Action Plan for necessary amendments.
- Facilitate/promote intergovernmental cooperation in fulfilling the vision for trails in the Grass Lake Area.

**Goal #3**

Promote Grass Lake Area parks and recreation facilities and programs to attract the seasonal population and tourists as well as new residents and businesses.

- Coordinate special events programming with the Grass Lake Area Historic Society, the Whistle Stop Park Association, and the Grass Lake Chamber of Commerce.
- Help the Grass Lake Chamber of Commerce prepare a brochure (and updates, as necessary) describing available attractions, activities, programming, and recreation facilities for Grass Lake Area.
- Create a link for information and schedules of activities at the Sports and Trails Recreation Park and other Area recreation facilities on local governmental websites.
- Work with the Jackson Convention and Tourist Bureau (through the I-94 Corridor Tourist Information Center) to publicize community events, list special events on the quarterly events brochure they publish, become involved in promotion of the area through the West Michigan Tourist Association, and research possible participation on an advisory board or citizens' council for the Bureau.
- Construct new facilities, renovate existing facilities and develop new special events that will encourage and increase our recreation park usage. Work with Chelsea Area Wellness Foundation non-motorized Transportation Plans.
- Acquire additional land and/or easements for networking into the proposed countywide trail system and connecting to other local trail networks.
- Improve, augment, and upgrade existing trails and other non-motorized facilities (including sidewalks where needed).

- Connect parks, recreation facilities, and other attractions (e.g., schools, libraries, and other municipal buildings as well as commercial and residential areas) within the Grass Lake community.

### **Background Information**

Input into developing the goals and objectives listed above included:

- Existing recreation facilities available to the residents of the Grass Lake Area regardless of the provider;
- Other plans and studies which impact the provision of recreation in the Grass Lake Area;
- The health, age, and disabilities of the residents of the Grass Lake Area;
- Possible funding and acquisition opportunities for land and facilities in the Grass Lake Area; and
- Responses from the recreation survey and other opportunities for comment from Grass Lake Area residents.

### **Tourism and Economic Development**

The physical environment of the Grass Lake Area is of high quality. The presence of Grass Lake and other resources already attracts seasonal residents. Development of a coordinated park system and recreation facilities may attract additional visitors as well as new year-round residents and businesses to the Area.

### **Collaboration with Other Recreation Providers**

People seldom live, work, shop, and recreate solely within the boundaries of a single municipality. Therefore, it makes sense to cooperate with overlapping and adjacent authorities who also provide recreational facilities and programs in Grass Lake Area. It may also make sense for the Village, Township, and/or Community Schools to concentrate on a specific project because a project addressing another identified recreation want/need is planned by a nearby provider.

There may also be an opportunity for jurisdictions to share the cost of developing and/or maintaining a park. For example, the Village has no municipal park although Grass Lake County Park is located within the municipal limits. There may be an opportunity for the Village to locate some of the recreation facilities proposed in this plan within the county park. It is also important to note that other facilities, such as a non-motorized trail system, often take an intergovernmental approach to plan, develop, and/or maintain.

### **Sports Facilities and Programs**

Respondents to the recreation survey indicated a need for various sports leagues (i.e., soccer, baseball, softball, football, and basketball) for Grass Lake Area youths and adults. At least eight baseball and softball diamonds are available to the residents of the Grass Lake Area, which appears to be adequate. However, they need to be improved to different degrees and will always need to be maintained. The Grass Lake Community Sports & Trails Recreation Park was designed to accommodate multi-purpose fields in addition to the baseball diamonds and soccer field which already exist.

### **Health, Age, and Disabilities of Residents**

The 2010 US Census revealed that 12.5% of Grass Lake Area residents at least 5 years of age or older were disabled that year. The number of people with disabilities is likely to increase as the population continues to age. This data highlights the need for recreation facilities to be built to the requirements of the ADA (American with Disabilities Act). Restrooms and other support facilities should be made accessible as well as playground equipment, non-motorized trails, and other active recreation facilities.

Development of a trail system and other less intensive yet active recreation facilities serve older and disabled residents. Those facilities will also be an important component of combating obesity by providing residents with a convenient way to be more active. It is important to note that obesity and generally being overweight were included as concerns within the 2010 Jackson County Community Report Card and the Jackson Community Comprehensive Plan. The establishment of a non-motorized transportation network is an important component of combating this health issue. For example, the Comprehensive Plan developed the following objectives to address that issue:

- “Sidewalks should be encouraged to be provided in neighborhoods, subdivisions, and site condominium projects; and commercial areas.”
- “Pedestrian networks are encouraged to be developed which link subdivisions, neighborhoods, business districts, downtown areas, recreational areas; and connected to a system of regional pedestrian and bicycle trails.”

- “Within downtown areas of the County pedestrian travel should be given priority over automobile and vehicular travel.”
- “Several recreation plans for local units of government call for the construction of recreational trails. In addition, the Jackson County Trailways Plan recommends several additional trails and trail extensions. These recommendations should be implemented as funding becomes available. Finally, trailways should be coordinated with the plans for trails in adjacent counties.”

### **Trail Development**

Multiuse trails were the number one choice of respondents to the recreation survey. The Grass Lake Community Sports & Trails Recreation Park was designed to accommodate trails in addition to the recreation facilities which already exist. The Jackson County Regional Trailway Study and the City of Jackson and Jackson County Joint Recreation Plan, and the Heart of the Lakes Area Recreation Plan also propose a variety of non-motorized facilities to which trails serving the Grass Lake Area can connect. This effort includes the proposed trail connecting to the Leoni Millpond Park; and providing a 4 foot shoulder on Wolf Lake Rd, Mt. Hope Rd. and Michigan Ave. The Jackson Community Comprehensive Plan also promotes walkable communities in general and the establishment of greenways (please see Appendix B).

Chapter 6

**Action Program**

Grass Lake Area Recreation Plan

*2016-2020 edition*

## **Action Program**

The action program was initially prepared based upon citizen input during the preparation of the 2000-2005 Recreation Plan and updated as the program scope expanded. Although the program is very ambitious, the Grass Lake Community recognizes and supports the needs and benefits of providing recreational facilities. The following project listing is obtainable through in-kind donations, investor contributions, annual general funds for maintenance, and grants:

1. **Community Sports & Trails Recreation Park**
  - Develop multi-purpose facilities (which can also be used for football)
  - Install lights on two baseball fields
  - Acquire 7.5 acres of land for trails
  - Purchase lighting for the cross country ski trails
  - Design and construct an indoor recreation facility
  - Construct paved roads and parking lots
  - Purchase additional playground equipment to comply with ADA regulations
2. **Township Office/Park**
  - Design and construct a seawall and fishing dock/pier (400 feet lake frontage)
  - Convert office into a Community Center
3. **Grass Lake County Park**
  - Add additional recreation facilities (e.g., sand volleyball, horseshoe pits, badminton courts, etc.)
4. **Whistlestop Park**
  - Preserve and renovate the historic facilities for contemporary use.
5. **Grass Lake Community Schools Campus**
  - Update existing recreation facilities

- Baseball and softball diamonds
- Soccer fields
- Football fields/stadium
- Develop a community fitness facility open to the residents of the Grass Lake Area.

#### 6. **Non-Motorized Trails**

- Upgrade the cross-country trail on the high school campus of the Grass Lake Community Schools
- Design and construct 1.8 miles of trails in the Village.
- Design and construct 3.1 miles of trails in the Township.
- Design and construct the Leoni Millpond Park trail loop (4 miles)
- Design and construct 5.5 miles of trails connecting to county trails, including wider shoulders connecting north and south Mt. Hope Rd. and a pedestrian lane connected to the I-94 bridge.
- Design and construct 4.5 miles of trails connecting to Heart of The Lakes Area trails and the Lefglen Nature Sanctuary.
- Design and construct a 10 mile trail from Grass Lake to Chelsea (Michigan Avenue)

### **Background Information**

The Plan's goals are the basis for the action program listed above.

#### **Goal #1**

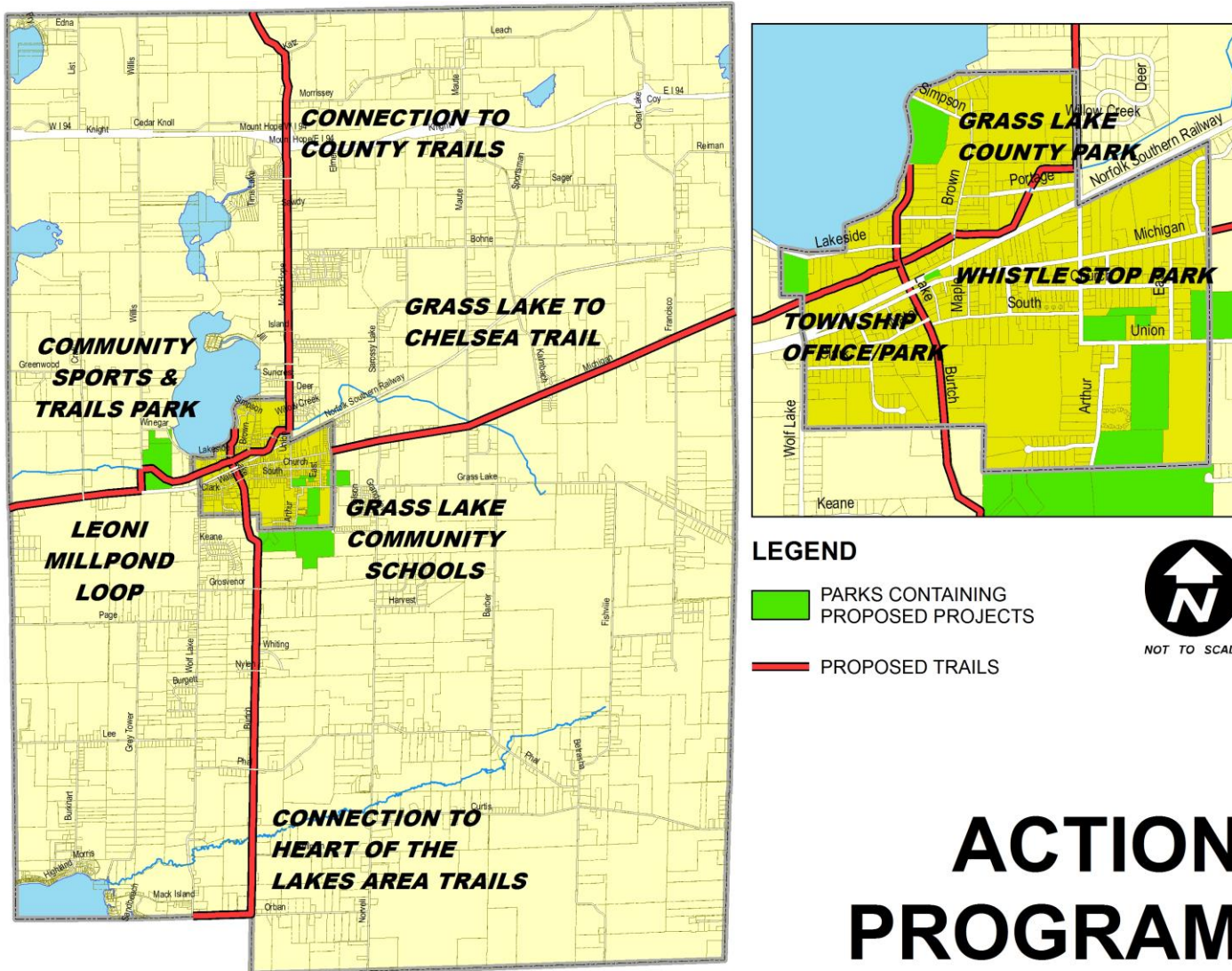
Completion of the Grass Lake Community Sports & Trails Recreation Park is an integral objective of this plan as are the trails. When completed, the facility will also provide opportunities for an active lifestyle, empowering Grass Lake Area residents to loose or maintain their weight and prevent the public health issues that often result from obesity. Improvements to active recreation facilities located at the Township Office/Park and on the campus of the Grass Lake Community Schools are also important components of the strategy of a healthy lifestyle.

**Goal #2**

Trails are also an important objective of this plan. Some of the proposed trails will connect with other nearby pathways, creating a non-motorized network which will enhance the benefit to Grass Lake Area residents. Other trails provide access to nature. The proposed facilities will also allow for existing recreation programs to grow and for other programs identified in the recreation survey to be initiated.

**Goal #3**

Development of a coordinated parks and recreation system augments the quality of the physical environment. This strategy can help to draw more tourists, residents, and businesses to the Grass Lake Area. Proposed improvements to the Township Office/Park and the Grass Lake County Park will attract these people as well as serve existing residents. Completion of the projects supported by the other goals of the plan will also help to fulfill this goal.



# ACTION PROGRAM



Appendix A

**Population Summary**

Grass Lake Area Recreation Plan

*2016-2020 edition*

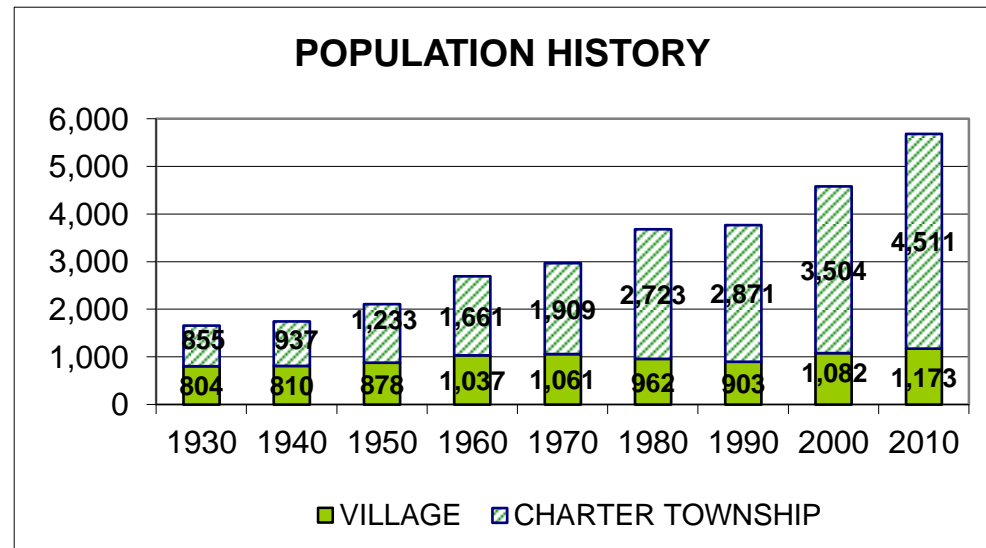
The Grass Lake Area is comprised of Grass Lake Charter Township and the Village of Grass Lake. The composition of Grass Lake residents has an effect upon the recreational needs of the Area. For example:

- × **Population History & Projections** – establish the need for general recreational facilities (standards for which are based upon the size of the population).
- × **The Age & Sex of the Population** – further refine the need for general recreational facilities balanced among various age groups and gender interests.
- × **Household & Family Composition** – further refine the need for general recreational facilities balanced between family-oriented and individual activities.
- × **Racial & Ethnic Composition** – further refine the need for general recreational facilities balanced among the various interests of racial and ethnic groups.
- × **The Disabilities of Residents** – establish the need for special recreation facilities and disability accommodations to general recreation facilities.
- × **Income** – helps to illustrate the need for publicly-funded recreational facilities.

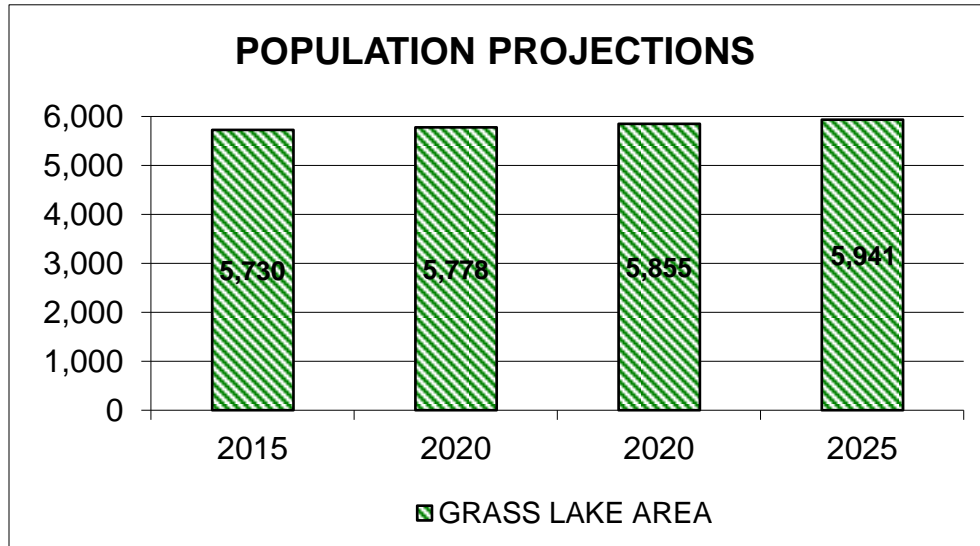
### Population History & Projections

The Grass Lake Area was home to 5,684 people in the 2010, according to the US Census. Village of Grass Lake residents comprised 20.6% of the Area’s population, down from 23.9% and 23.6% in 1990 and 2000, respectively.

The 2040 population projections utilized in this plan were developed for the Jackson Area Comprehensive Transportation Study’s 2040 Long Range Transportation Plan “based on previous trends as depicted in” historic



U.S. Census data “and on the Regional Economic Models Inc. (REMI) forecast data developed for the Michigan Department of Transportation. The REMI data forecast is based upon the Cohort Survival methodology in association with economic development factors for a particular jurisdiction.” The data was then “straight-lined” to obtain the 5-year increments.

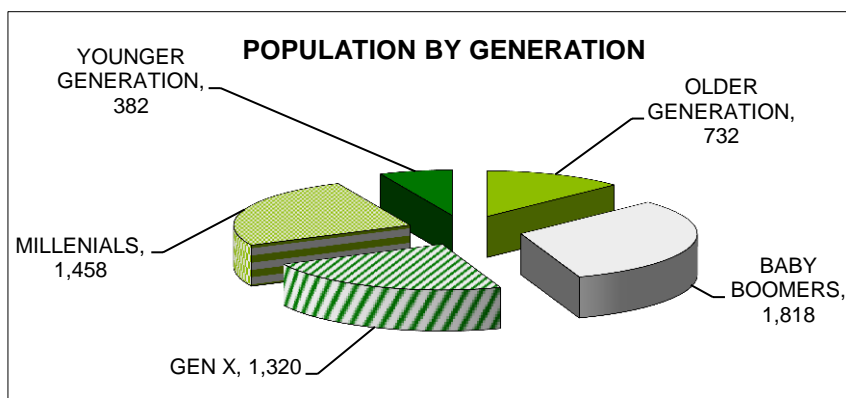


As the adjacent figure depicts, the Grass Lake Area is projected to grow in the foreseeable future, increasing 0.8% by 2015, 1.7% by 2020, 3.0% by 2025, and 7.9% by 2040. The US Census estimated the population of the Area to be 5,725 in 2012. The population will be fairly stable for all rural (including Grass Lake) and urban Jackson County townships, with a slight population increase of 1.9% and 1.0%, respectively, by 2040. However, a slight population loss of 1.2% is projected for all of Jackson County due to the City of Jackson which is projected to lose 11.2% of its population by 2040.

**American Community Survey**  
*The use of estimates provided by the U.S. Census Bureau’s American Community Survey (ACS) provides more up-to-date demographics. Reporting jurisdictions the size of the Grass Lake Area are provided five-year average estimates on a regular basis. The reporting period utilized for this plan is 2009-2013.*

### Age & Sex of the Population

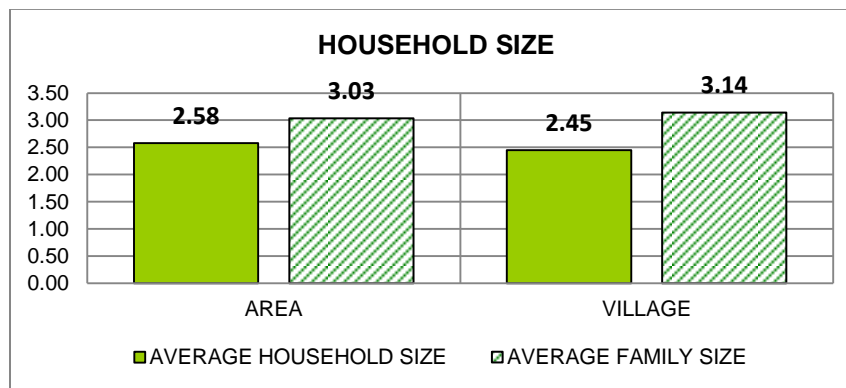
The estimated median age of a Grass Lake Area resident during the 2009 to 2013 time period was 41.9 years, higher than the estimated 35.8 years for the nation. The estimated median age of a Village resident was only 38.2 years. As the figure below illustrates, ‘baby boomers’ –people between 45 and 64 years of age in 2010– accounted for an estimated 31.8% of the population. ‘Millennials’ –people between 5 and 24 years of age in 2010– accounted for an estimated 25.5% of residents. ‘Gen X’ –people between 25 and 44 years of age in 2010– accounted for an estimated 23.1% of the population. ‘Older generations’ –people at least 65 years of age in 2010– accounted for an estimated 12.8% of the population. ‘Younger generations’ –people less than 5 years of age in 2010– accounted for an estimated 6.7% of the population. The Area’s population was almost evenly split between male (50.3%) and female (49.7%).



	AREA	CHARTER TOWNSHIP	VILLAGE
<b>TOTAL</b>	<b>5,710</b>	<b>4,395</b>	<b>1,315</b>
MALE	2,872	2,270	602
<b>FEMALE</b>	<b>2,838</b>	<b>2,125</b>	<b>713</b>
UNDER 5 YEARS	382	308	74
<b>5 TO 9 YEARS</b>	<b>385</b>	<b>279</b>	<b>106</b>
10 TO 14 YEARS	393	335	58
<b>15 TO 19 YEARS</b>	<b>395</b>	<b>298</b>	<b>97</b>
20 TO 24 YEARS	285	173	112
<b>25 TO 34 YEARS</b>	<b>402</b>	<b>215</b>	<b>187</b>
35 TO 44 YEARS	918	755	163
<b>45 TO 54 YEARS</b>	<b>916</b>	<b>713</b>	<b>203</b>
55 TO 59 YEARS	459	344	115
<b>60 TO 64 YEARS</b>	<b>443</b>	<b>376</b>	<b>67</b>
65 TO 74 YEARS	416	355	61
<b>75 TO 84 YEARS</b>	<b>252</b>	<b>195</b>	<b>57</b>
85 YEARS & OVER	64	49	15

### Household & Family Composition

There were an estimated 2,189 households in the Grass Lake Area between 2009 and 2013 and 24.5% of them were located in the Village of Grass Lake. Families comprised an estimated 75.1% of Area households and those with children under 18 years of age comprised an estimated 33.7% of all households. Married couples comprised an estimated 66.6% of households and those with children under 18 years of age comprised an estimated 28.2% of all households. Single-parent families comprised an estimated 5.5% of households. Nonfamilies comprised an estimated 24.9% of Area households. Householders living alone comprised an estimated 22.2% of households and people 65 years of age or older living alone comprised 8.0% of all households. The average household size for the Area was estimated to be 2.58 people and the average family size was estimated to be 3.03 people. The average household size for the Village was estimated to be 2.45 people and the average family size was estimated to be 3.14 people.



### Racial & Ethnic Composition

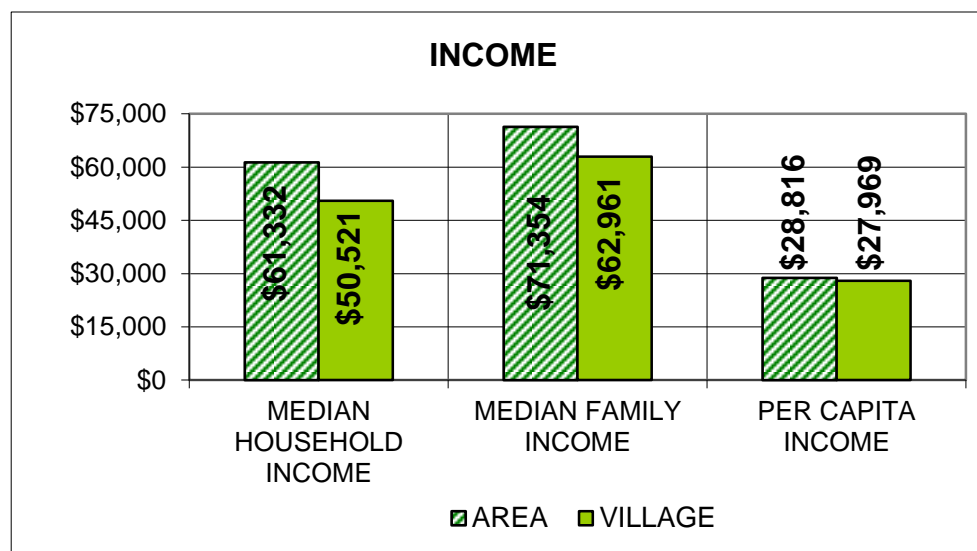
Race and ethnicity are not significant issues regarding recreation given that an estimated 96.6% of Grass Lake Area residents were white between 2009 and 2013 and only an estimated 2.5% of residents were Hispanic.

## Disability of Residents

Grass Lake Area residents with at least one disability between 2009 and 2013 comprised an estimated 9.0% of the population. Age is often a determining factor regarding disabilities, especially ambulatory difficulties. For example, it is estimated that no children under 5 years of age were disabled and only 4.4% of kids between the ages of 5 and 17 were estimated to have some type of a disability. No children had an ambulatory difficulty. An estimated 8.1% of people between the ages of 18 and 64 were estimated to have some type of a disability and an estimated 35.8% of them had an ambulatory difficulty. In comparison, an estimated 15.8% of people 65 years of age or older and 94.9% of them had an ambulatory difficulty.

## Income

The estimated median household income in the Grass Lake Area (\$61,332) between 2009 and 2013 was greater than the median household income estimated for the United States (\$53,046) or the Village (\$50,521).<sup>1</sup> The median family income in the Area (\$71,354) was also greater than the median household income estimated for the United States (\$64,719) or the Village (\$62,961). The per capita income in the Area (\$28,816) between was greater as well than the median household income estimated for the United States (\$28,155) or the Village (\$27,969).<sup>2</sup>



<sup>1</sup> The median income means that ½ of the incomes were greater and ½ were less than the amount.

<sup>2</sup> Per capita income is the average income for all residents (i.e., the sum of all household incomes divided by the total population).

Appendix B

**Jackson Community Comprehensive Plan 2000-2025**

Grass Lake Area Recreation Plan

*2016-2020 edition*





















































































