

Village of Clinton

Community Recreation Plan

2022-26



Plan Adopted January 24, 2022

**Village of Clinton
Community Recreation Plan
2022-26**

Plan Adopted January 24, 2022

Village Council

Doris Kemner, President
Carl Habrick, Pro-Tem
Larry Sines
Greg Michalak
Joe Orban
Kevin Kelly
Bonnie Peters

Advisory Planning Commission

Ann Mason, Chair
Dave Orlowski
Steve Adams
Evan Kirby
Gary Couture
Open
Open

Plan Prepared By

P.M. Blough, Inc.
616-402-2398

TABLE OF CONTENTS

Introduction	Page 1
Community Description	Page 2
Recreation Plan Jurisdiction	Page 2
Population	Page 2
Community Background	Page 2
U.S. Heritage Trail	Page 3
Neighborhoods	Page 3
Map of Village of Clinton	Page 4
Administrative Structure	Page 5
General Law Village and Village Council	Page 5
Role of Advisory Planning Commission	Page 5
Department, Authority and Organization Chart	Page 5
Annual Budget	Page 6
Current Funding Sources	Page 6
Roles of Volunteers and Organizations	Page 6
Smith Kimball Community Center	Page 6
Non-Profit Organizations and Volunteers	Page 6
Relationship with Clinton Community School District	Page 7
Recreation Inventory	Page 8
Description of Methods Used to Conduct Inventory	Page 8
Inventory of Village Parks and Recreation Facilities	Page 8
Tate Park	Page 8
Veterans Memorial Park	Page 8
Water Tower Park	Page 9
Smith Kimball Community Center	Page 9
Parks and Facilities Location Map	Page 10
Tate Park Existing Master Plan	Page 11
Tate Park 2011 Master Plan Drawing	Page 12
Veterans Memorial Park Master Plan	Page 13
ADA Accessibility Assessment of Existing Park Facilities	Page 14
ADA Accessibility Review	Page 16
Lenawee County Parks	Page 18
State of Michigan Parks	Page 18
Clinton Community Schools	Page 19
Other Community Facilities	Page 19
Community Special Events and Recreation Programs	Page 20
Status Report for All Grant Assisted Parks and Recreation Facilities	Page 21

Description of Planning Process	Page 22
Description of the Public Input Process	Page 23
Park Tours, Inventory, and ADA Assessment	Page 23
Early Public Input / Electronic Survey	Page 23
Park Committee Public Meeting	Page 25
30-Day Public Review Period	Page 25
Resolution for Adoption and Final Public Hearing	Page 25
 Goals and Objectives	 Page 26
 Action Program	 Page 31
Land Acquisition	Page 31
Recreational Programming	Page 31
Facility Development	Page 31
Tate Park Master Plan for Reference	Page 32
Tate Park Project List	Page 33
Project Descriptions	Page 34
 Supporting Documentation	 Page 37
Post-Completion Self Certification Reports	
Village of Clinton Parks and Recreation Survey 2022	
Village of Clinton Parks & Rec. Committee Motion of Support	
Notice of Draft Plan for 30 Day of Public Comment and	
Public Hearing at Village Council Meeting	
Minutes of Public Hearing and Village Council Meeting	
Adoption of Plan	
Transmittal Letters to Lenawee County and	
Region II Planning Commission	

INTRODUCTION

The Community Recreation Plan is developed to focus on recreational needs and how to address them over the next five years and beyond. The key focus of this document is for the years 2022-26 and this document as adopted will replace the previous plan, *Village of Clinton, Community Recreation Plan 2011-15*.

In updating the plan, the existing plan was reviewed, key pieces of information updated and the recreation inventory was reviewed and updated. During the process the Goals and Objectives were reviewed and updated, and a new descriptive list of future recreational projects was developed.



The plan was prepared by the Village with the assistance of recreation planning consultant, PM Blough, Inc. The primary recreational lands and facilities are located in Tate Park, an eighty-acre park. In 2011, an extensive master plan update of Tate Park was undertaken by the Village which included several public workshops. The Tate Park Master Plan process provided a significant foundation for the further planning efforts completed to finalize the previous Community Recreation Plan. Based on the 2011 Tate Park Master Plan, the Village was awarded a Michigan Natural Resources Trust Fund grant which funding several projects in the park including a new riverfront walkway, fishing opportunities, and expanded play area, restroom upgrades and overall ADA accessibility improvements. In the process for this Community Recreation Plan, the Tate Park Master Plan was updated to reflect the facilities that had been constructed over the previous five years as well as updated the overall master plan to reflect the public input received and the projected community needs.

The preparation of this document included opportunities for public participation, an electronic survey and a month of public review time for the draft document, and a formal public hearing held by the Village Council.

COMMUNITY DESCRIPTION

The Community Description section of the plan describes the jurisdiction of the recreation plan and background information for the Village of Clinton.

RECREATION PLAN JURISDICTION

This Community Recreation Plan is prepared solely for the Village of Clinton, located in southeast Michigan in northern Lenawee County. The Village currently incorporates 2.0 square miles of land. Clinton Community Schools is the public school district that provides public education within the Village of Clinton and the surrounding area with student population of 1,240 students. The Elementary, Middle and High Schools are all located within the Village Limits. The district encompasses over 153 square miles and covers an area that includes seven townships and the village. A map Village of Clinton Limits and the current Land Use Map are included in this plan section.

POPULATION

The population in the Village of Clinton in the 2010 U.S. Census was 2,336 persons. 2020 Census data is 2,517 persons.

COMMUNITY BACKGROUND

The Village of Clinton is located in the northeast corner of Lenawee County and encompasses 2.0 square miles. The community was first settled in 1829 and the Village was incorporated in 1838. As quoted from the summary provided on the Clinton Historical Marker, the community's history is as follows:



"Early settlers who came here from New York via the Erie Canal named this community in honor of DeWitt Clinton, the governor of their native state. First settled in 1829, Clinton became an important center of trade because of its location on the Chicago Road at the River Raisin. Only a decade after its settlement, the village had ten general stores, several blacksmith shops, and a hardware store. Five religious groups organized and built churches during this era. In 1832 Clinton's first school was established; four years later a flouring mill began operation. A railway with wooden rails constructed about 1837 ran for a few years and by 1857 it had steel tracks. In order to utilize local wool production, village businessmen organized the Clinton Woolen Mills in 1866 which employed many area people until closing in 1957.

The Village remains a prosperous community with strong residential neighborhoods.

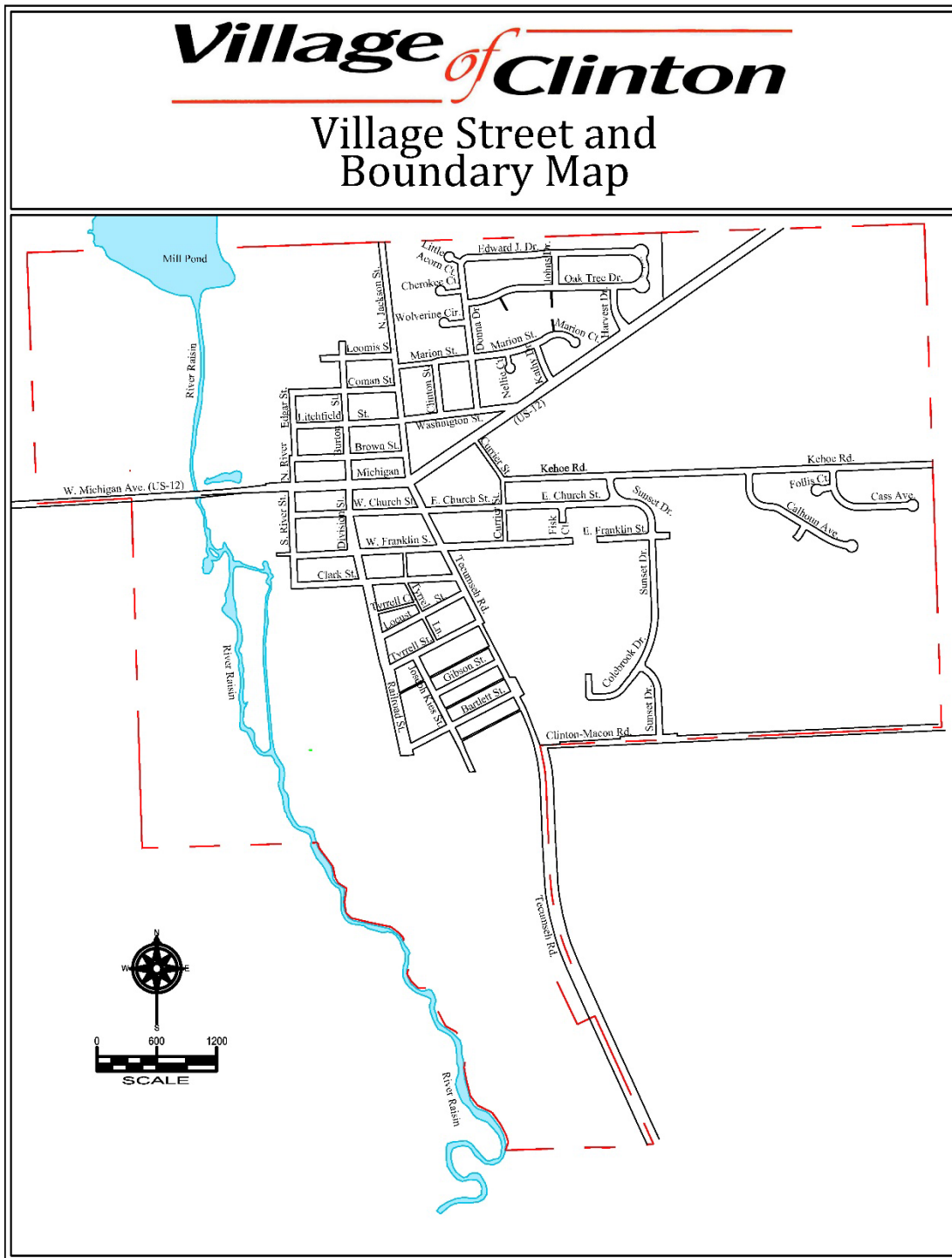
US 12 HERITAGE TRAIL

Running directly through the Central Business District is Highway US 12 which was designated in 2004 as the US 12 Heritage Trail. The US 12 Heritage Trail started as an ancient Indian trail which in 1825 was formalized by the United States Government into the second federal highway connecting Detroit, MI with Chicago, IL. This route later serviced cars from their very beginning. Later expressways and toll roads became more popular routes, but many of the historic buildings, businesses, and attractions remain along this route. On the route, the Village of Clinton is a designated "Trail Town," and is given the tag line of "Once the Greatest Trading Point in Michigan, West of Detroit." Settlers traveling the Erie Canal to Buffalo, NY, would travel by ship to Detroit, and then travel by land on the route that would become U.S. 12. Clinton was the first stagecoach stop west of Detroit on the eight day journey to Chicago making it a successful trading post and later a strong industrial center including a water powered grist mill and a woolen mill.

NEIGHBORHOODS

There are five primary neighborhoods that have developed within the Village. Prior to the 1960's, the principal residential district was located north and south of U.S. 12 and west of Clinton-Tecumseh Highway. The housing was primarily built between 1835 and 1930. In 1965, home construction began east of Clinton-Tecumseh Highway. Two new subdivisions were established: Pleasant Valley Estates and Clinton Heights. Today, these subdivisions are highly populated single-family residential neighborhoods. In the early 1970's, a 172-lot manufactured community, Water Wheel Estates was developed at the west end of the Village limits. Calhoun Farm Estates was established in 1998 as a platted 52-unit subdivision. In 2005 Harvest Ridge Subdivision was constructed with 50 lots. As the entire Village is located within a 2.0 square mile area, all residents are within easy access of the Village parklands.

VILLAGE OF CLINTON BOUNDARY MAP



ADMINISTRATIVE STRUCTURE

The Administrative Structure section of the plan provides background information regarding the structure and operation of the Village administration and parks.

GENERAL LAW VILLAGE AND VILLAGE COUNCIL

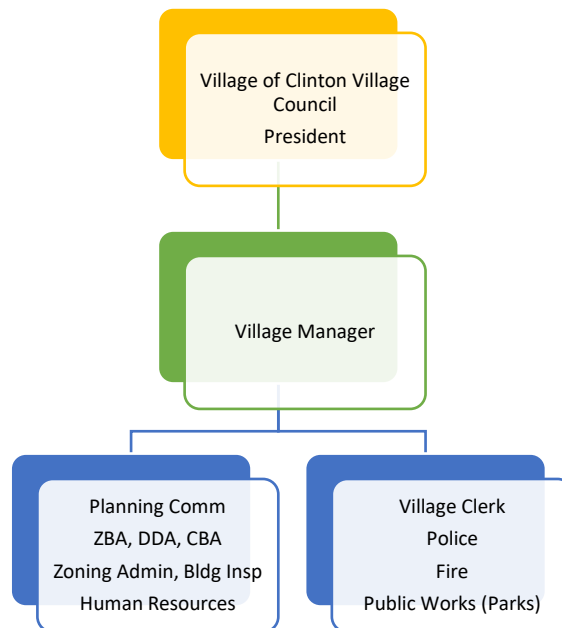
The Village of Clinton is incorporated as a general law village with a Council/Manager form of government. The Village Council is the highest elected body with a President and six Council members. All Village Council members are elected at large. The Village Manager, Clerk and Treasurer are appointed by the Village Council and oversee the administration of the Village.

ROLE OF ADVISORY PLANNING COMMISSION

The Village Council appoints members to the Advisory Planning Commission which serves as an advisory board to the Village Council. The Advisory Planning Commission does not have formal rule or policy making authority. It makes recommendations to the Village Council who has final authority on all planning, budgetary, rules, and operational concerns.

DEPARTMENT, AUTHORITY AND ORGANIZATION CHART

The parks and recreation facilities are owned by the Village. Maintenance and operation of the parks is completed by the Public Works Department. There is not a specifically designated park director, however the Village has two people assigned to parks for overall maintenance and care. Overall day to day administration of the parks is the responsibility of the Village Manager.



ANNUAL BUDGET

The primary funding for park operation and maintenance is through the General Fund of the Village. The total Village General Fund Budget for 2021-22 is \$1,457,535. The budgeted annual expenses for parks in 2021-22 totaled \$146,880. These funds included park maintenance, operating supplies, utilities, and small construction projects. The Village provides funding for a youth soccer league and fast pitch softball league. The cost of these programs is covered by player fees.

These budgets include funding for Tate Park capital improvement projects through the Tate Park Trust. The Tate Park Trust was established by the estate of John Robison, a longtime resident of the Village. His gift of establishing the trust fund provided a base fund of approximately \$1.3 million dollars to use in the future development of the park. This fund continues to grow through financial investments. A portion of the trust is available for new projects within the park.

CURRENT FUNDING SOURCES

Funding sources for parks operation, maintenance, and recreational programming, as well as capital improvements are provided via the Villages General Fund. Additional funds for improvements within Tate Park are also provided by the Tate Park Trust noted above.

ROLE OF VOLUNTEERS AND ORGANIZATIONS

SMITH KIMBALL COMMUNITY CENTER AND BOARD

The Smith Kimball Community Center is a historic structure built around 1840 and added on to several times becoming a significant property within the community. In 1955, the home was donated to the Village of Clinton by Blanche Smith for use as a community center. The Center is used by many community groups for regular meetings and special events. Programming within the facility is provided by the non-profit clubs and organizations such as scout groups, card clubs, and craft and art groups. The Smith Kimball Community Center is operated by a board elected to four-year terms by the general public. The Board is responsible for setting policy and administrative duties.

NON-PROFIT ORGANIZATIONS AND VOLUNTEERS

There are several non-profit organizations that provide recreational programming and special events within the Village of Clinton. These organizations provide countless hours of service to the community in providing these opportunities. The organizations coordinate with the Village for use of public facilities for the events and activities.

Softball Leagues: Tate Park hosts adult softball leagues for men and women from April through September through volunteer run leagues.

Soccer Leagues: Tate Park hosts soccer for all school age children through volunteer run leagues.

Little League Baseball: The Clinton Little League offers baseball and softball programs for boys and girls which are hosted at Tate Park.

Clinton Football and Cheer: This volunteer group provides youth opportunities for flag or tackle football and cheer teams.

Youth Basketball: Youth basketball leagues are provided by the YMCA at the Clinton Elementary School.

Co-Ed Volleyball: Volleyball leagues for adult men and women are provided by Clinton Public Schools at the Clinton Elementary School.

Men's Basketball: Adult men's basketball is offered October through April at the Clinton Elementary School.

Boy and Girl Scouts: Boy Scouts of America and Girl Scouts of America offer scouting experiences for area youth.

Clinton Fall Festival: The Clinton Fall Festival is a non-profit organization of the Clinton Chamber of Commerce that plans and promotes an annual fall festival weekend in late September. Several of the main events are focused in Tate Park which includes over 250 arts and crafts booths, more than 500 classic cars, a parade, food booths, and concerts

Additional Organizations offering programming for residents include the Clinton Historical Society, American Legion, Rotary International, Beta Sigma Phi for Women, A.A., and Weight Watchers.

RELATIONSHIP WITH CLINTON COMMUNITY SCHOOL DISTRICT

Clinton Community Schools encompasses over fifty-three square miles and is located within seven townships with approximately 1,240 students in the district. The three school facilities are all located within the Village of Clinton. The Village and Schools operate independently but have a cooperative relationship. The school district provides several facilities which are available for public recreational use. These facilities are listed within the Recreation Inventory section of this plan.

RECREATION INVENTORY

The Recreation Inventory section of the plan provides information on the existing recreational lands and opportunities that exist for the residents within the community.

DESCRIPTION OF METHODS USED TO CONDUCT THE INVENTORY

The updated parks inventory was conducted in August of 2021 by the Village Manager and staff. Each Park was reviewed for updated facilities and ADA accessibility, as well as reviewed for potential future improvements.

INVENTORY OF VILLAGE PARKS AND RECREATION FACILITIES

The Village of Clinton has three parks: Tate Park, Veterans Memorial Park, Water Works Park as well as the Smith Kimball Community Center. A description of each of the parks and the center is included below and a location map of each site is located within this section.

TATE PARK - 85 ACRES

Tate Park is a community park located on Michigan Avenue (US 12) that provides public recreation opportunities for Village residents as well as residents from the surrounding townships. It is the focus of community events and festivals, picnic facilities, access to the River Raisin, and athletic facilities. The River Raisin flows through the entire length of the park. Within the park and river is a seven-acre wooded island with bridge access and trails. Tate Park is located within 0.4 miles of the Village center and within a five-minute walk of approximately 20% of the village population.

VETERANS PARK – LESS THAN 1 ACRE

Veterans Park is located in downtown Clinton on two small lots totaling approximately $\frac{1}{4}$ acre. It serves as a memorial to Veterans of War and therefore would be considered a special use park. The small park has a historical monument and open lawn space for reflecting. The service area of the park is local for residents within the Village and surrounding Townships. The Park is ADA accessible and will be improved as funds allow. The Park is located within the Village center and within a five-minute walk of 75% of the village population.



WATER WORKS PARK – 1 ACRE

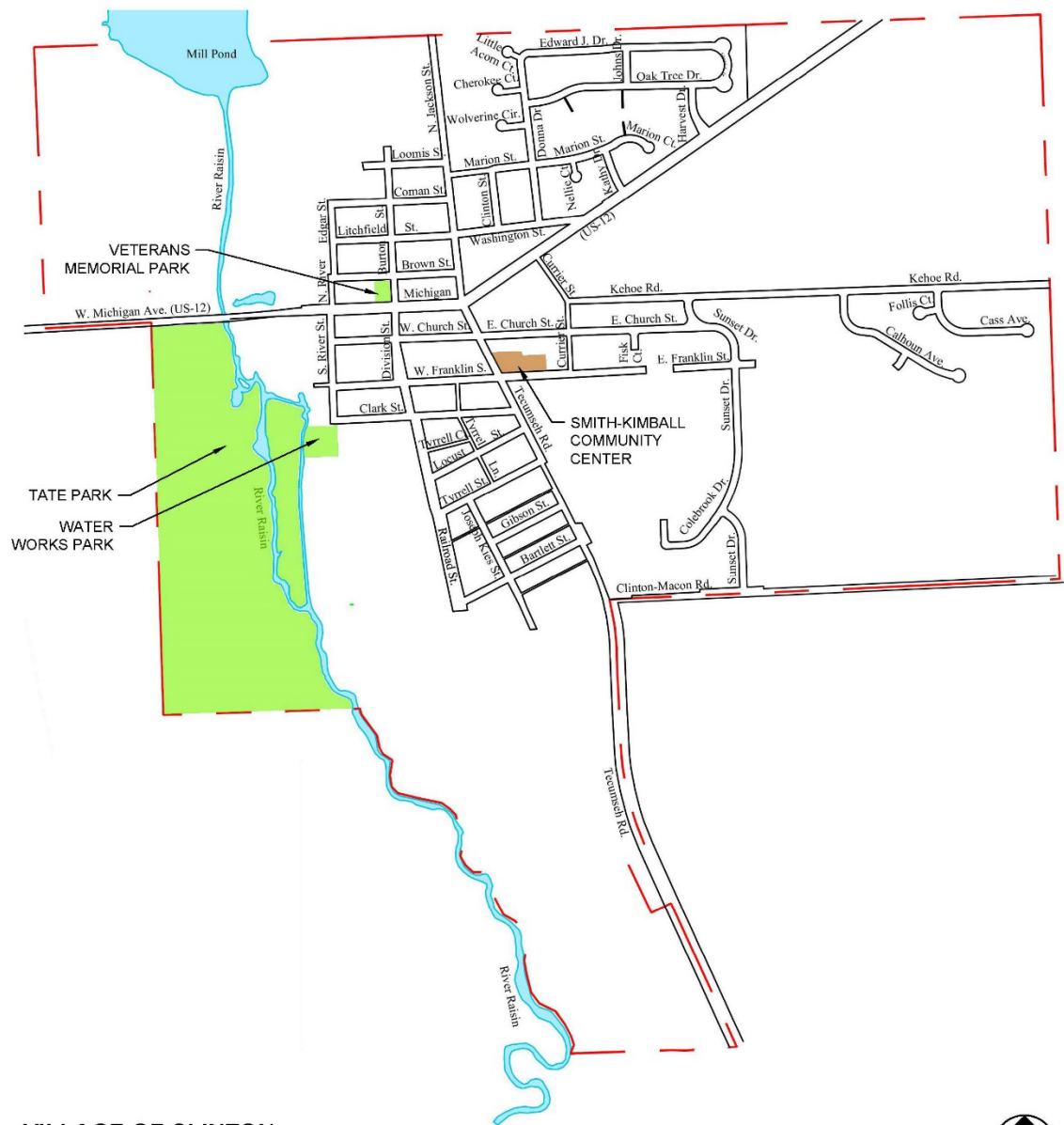
Water Works Park is located adjacent to the east boundary of Tate Park. It is a one-acre park located on the River Raisin and provides access to the river for fishing. It has a picnic area and Scout Cabin. The Scout Cabin is used by the local Boy Scout and Girl Scout Troops. The Park is considered a special use park. The service area of the park is local Village and surrounding township residents. ADA access across a bridge from Tate Park has been constructed, but the facilities within Water Works Park are not accessible. This Park receives light use as most residents utilize the parking and pathways within Tate Park. Water Works Park is located within 0.4 miles of the Village center and within a five-minute walk of approximately 20% of the village population.

SMITH KIMBALL COMMUNITY CENTER

The Smith Kimball Community Center is a historic structure built around 1840 and added on to several times becoming a significant property within the community. In 1955, the home was donated to the Village of Clinton by Blanche Smith for use as a community center. The Center is used by many community groups for regular meetings and special events. Programming within the facility is provided by the non-profit clubs and organizations such as scout groups, card clubs, and craft and art groups. Located near the center of the Village, the Center is within a five-minute walk of approximately 70% of the Village population.

As the Center is a historic two-story home, the spaces within the building are spaces constructed for the original residential home. A consultant has previously completed an ADA assessment on the building with recommendations within a report. Several modifications have been made to the first floor of the house such as access and restrooms to improve the ADA accessibility of the center. The second floor is not ADA.

PARKS AND FACILITIES LOCATION MAP



VILLAGE OF CLINTON PARK LOCATION MAP

LEGEND:

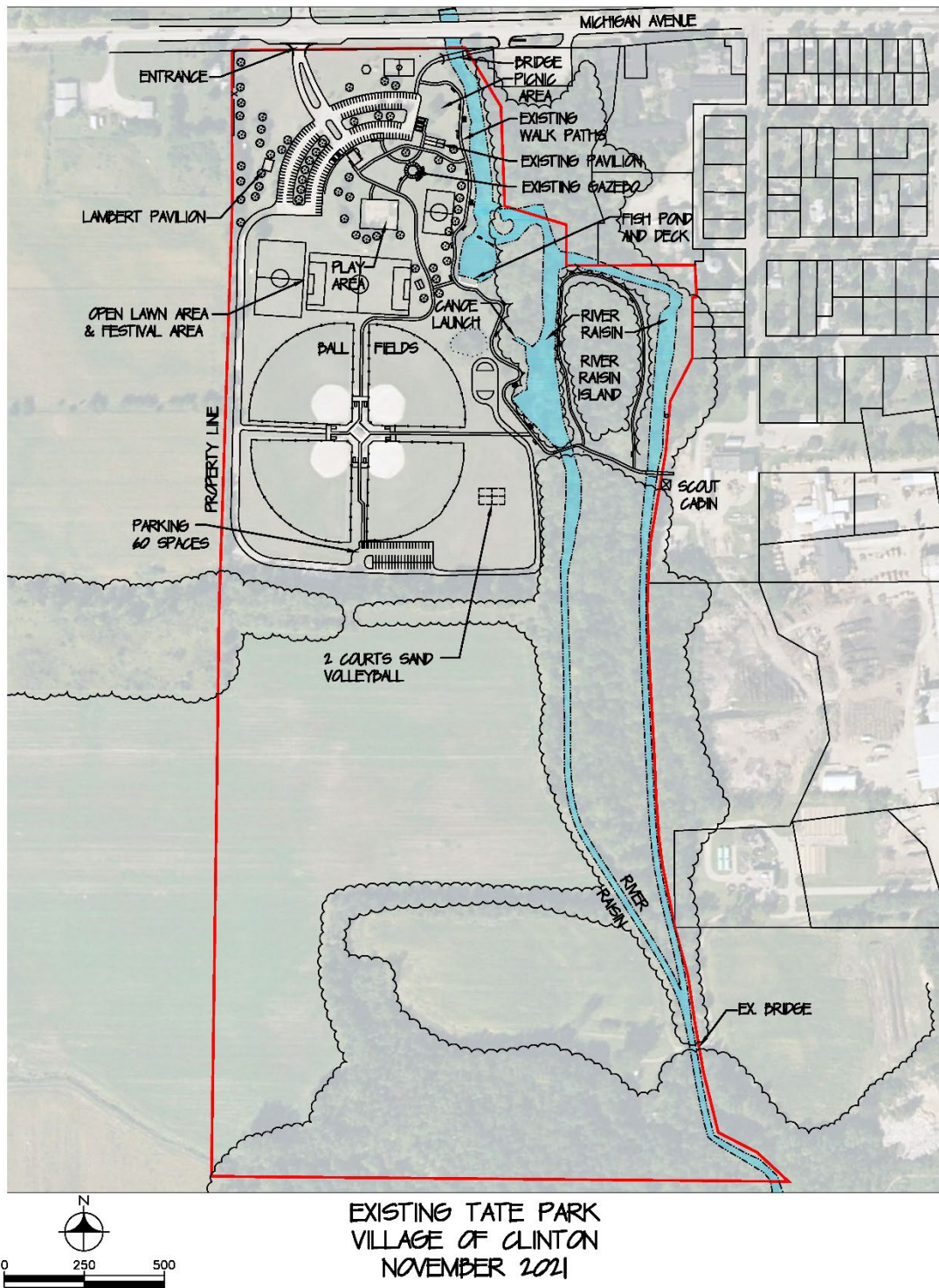
- VILLAGE PARK
- COMMUNITY SPACE



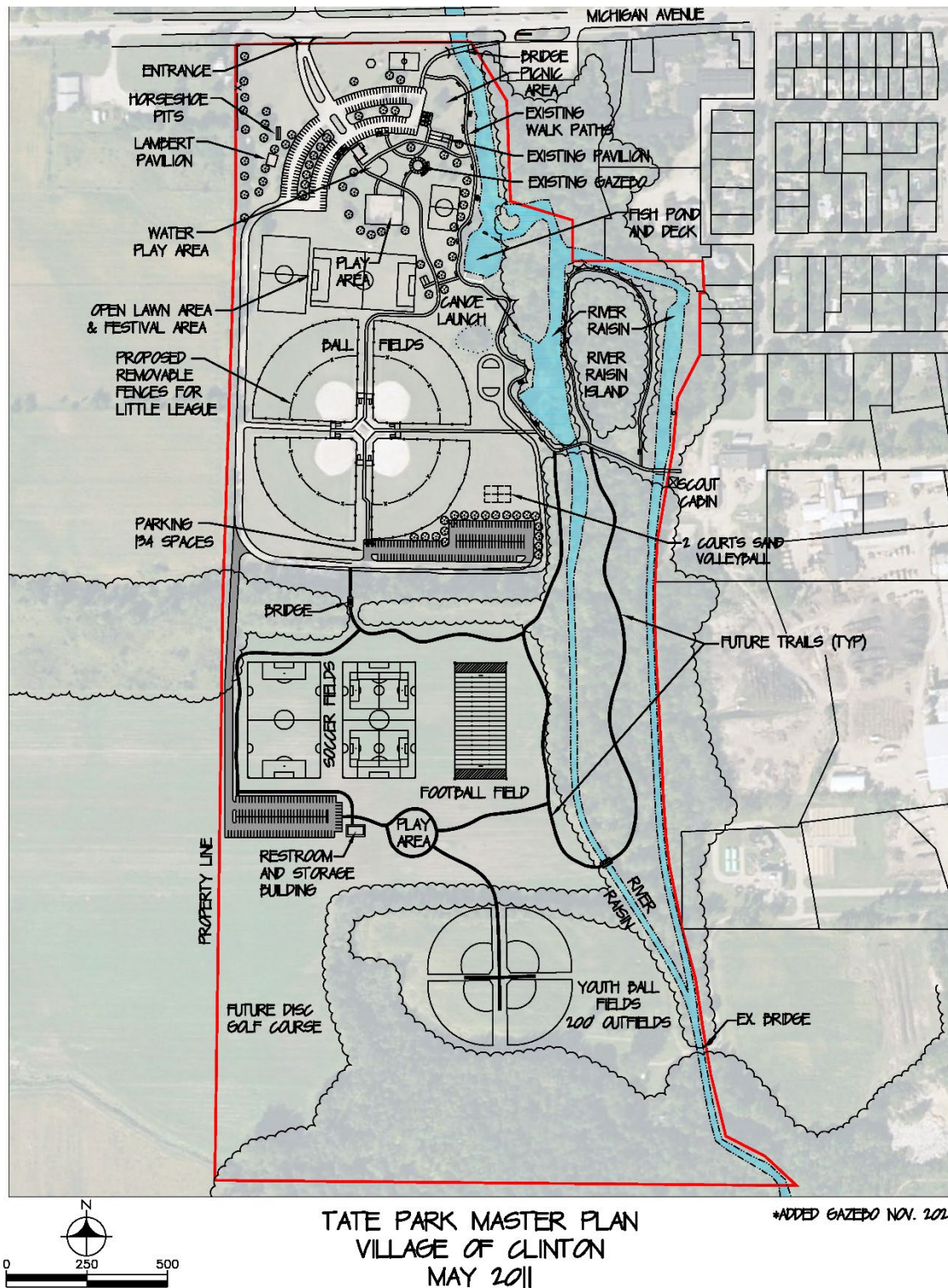
PMB
PM Blough, Inc.

AUG. 2, 2021

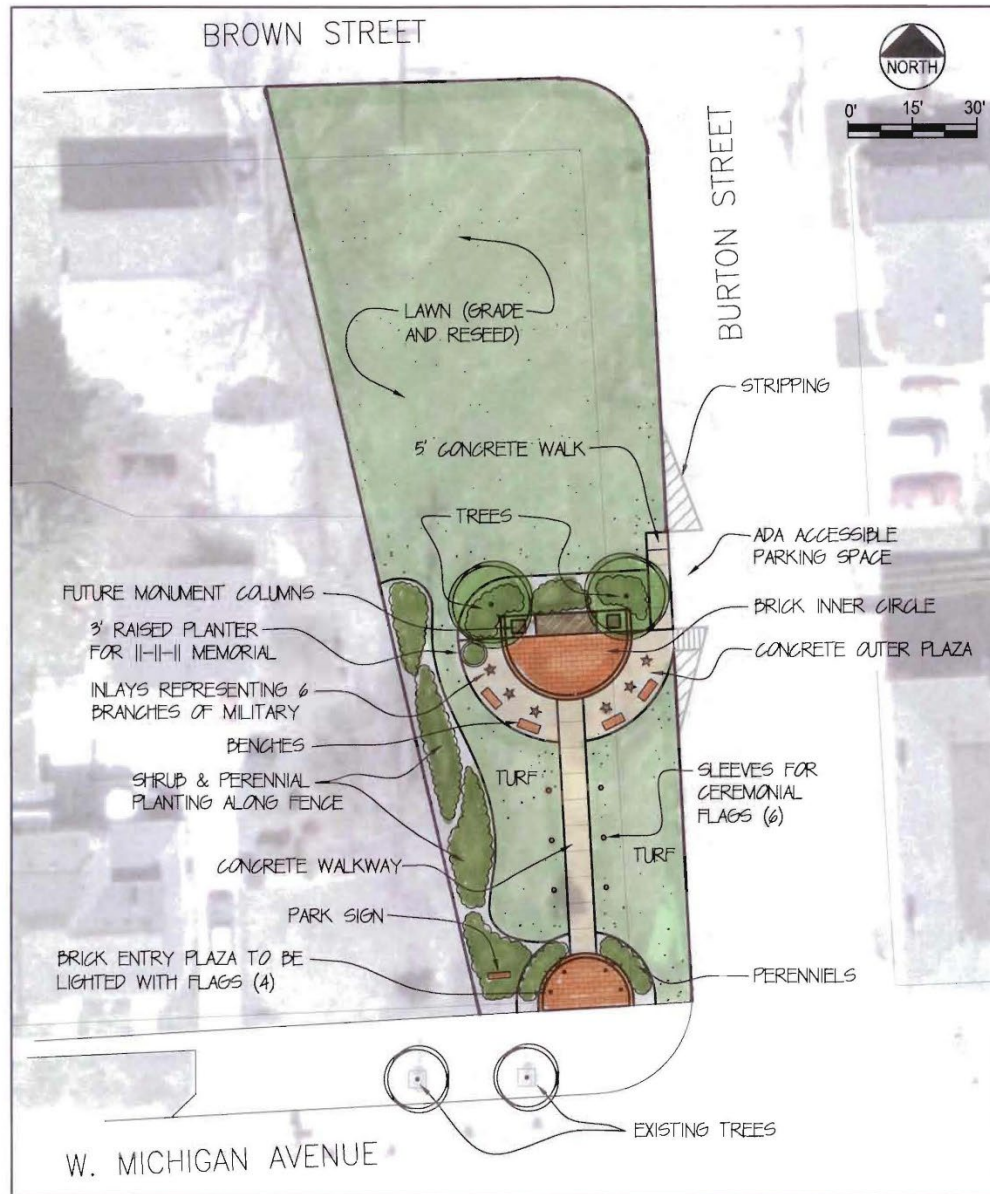
TATE PARK SITE PLAN



TATE PARK MASTER PLAN



VETERANS MEMORIAL PARK MASTER PLAN



PMB
PM Blough, Inc

MASTER PLAN
for
VETERAN'S MEMORIAL PARK
VILLAGE OF CLINTON

APRIL 02, 2012

ADA Accessibility Assessment of Existing Park Facilities

The *Guidelines for the Development of Community Park, Recreation, Open Space and Greenway Plans* prepared by the Michigan Department of Natural Resources Grant Management Division requires the completion of an Accessibility Assessment. This Plan includes the following areas directed to the identification and planning for ADA and Universal Accessibility.

ADA Park Review and Assessment

This assessment was completed in each park during the individual park tours and the information has been incorporated into the planning process.

Individual Park Inventory Sheets

A brief description of the accessibility of each park is included for public information in the above park inventory information.

ADA Accessibility Assessment

An ADA accessibility Assessment is included at the end of this section which summarizes the accessibility of the parks within the community based on the MDNR Accessibility Ranking System further discussed below.

Goals and Objectives:

The Village included future Goals and Objectives for improving ADA accessibility within the parks through renovation and future development projects. These are included in the Goals and Objectives Section.

Action Plan and Future Projects

The Village embraces the commitment to make the parks more accessible. As they renovate and improve the existing parks the facilities are being upgraded and made more accessible. New facilities are incorporating the principals of Universal Design from the initial design through construction. These projects are being accomplished as funding is available for park improvements.

MDNR ADA Accessibility Ranking System

The MDNR planning booklet provides a ranking system was updated in November of 2018 to the following to be utilized in evaluating public parks and open spaces. This ranking system is based on the following:

- 1= none of the site elements meet 2010 ADA Standards for Accessible Design
- 2= some of the site elements meet 2010 ADA Standards for Accessible Design
- 3= most of the site elements meet 2010 ADA Standards for Accessible Design
- 4= all of the site elements meet 2010 ADA Standards for Accessible Design
- 5= the facility meets the Principals of Universal Design

Appendix D. Barrier Free Accessibility Requirements for Parks, within the guideline's booklet, provides the following written comments regarding parks and accessibility.

“Recreational areas, facilities, and programs play an important role in the life of the community; therefore, it is essential that people with disabilities have an equal opportunity to enjoy these areas and any programs provided. Federal and state laws prohibit discrimination on the basis of disability, and these laws apply to parks and other recreation lands and programs controlled and operated by local units of government. The DNR has a strong commitment to barrier free recreational opportunities in our Department-managed programs and facilities. This commitment extends to those communities that receive recreation grants.

Under the state Utilization of Public Facilities by the Physically Limited Act (Public Act 1 of 1966, as amended) all facilities, including improved areas used for recreation, must meet the barrier free design requirements contained in the state construction code. Under this act, the administration and enforcement related to barrier free design requirements are vested in the local or state government agency responsible for issuing a building permit. If the project does not require a building permit, administration and enforcement of barrier free design requirements are vested in the Department of Licensing and Regulatory Affairs.

Any request for an exception to the barrier free design requirements of the state construction code must be submitted to the Barrier Free Design Board, within the Department of Licensing and Regulatory Affairs. (517-241-9328). The Barrier Free Design board has the responsibility to receive, review, and process requests for exceptions to barrier free design specifications; require appropriate equivalent alternatives when exceptions are granted; and receive, process, and make recommendations for barrier free design rules.

The Department of Justice published revised regulations for Titles II and III of the Americans with Disabilities Act of 1990 “ADA” in the Federal Register on September 15, 2010. These regulations adopted revised, enforceable accessibility standards called the 2010 ADA Standards for Accessible Design, “2010 Standards or Standards”. The 2010 Standards set minimum requirements—both scoping and technical—for newly designed and constructed or altered state and local government facilities, public accommodations, and commercial facilities to be readily accessible to and usable by individuals with disabilities. The Federal Standards have precedence over State codes.

Adoption of the 2010 Standards also established a revised reference point for Title II entities (public entities-State or local government) that choose to make structural changes to existing facilities to meet their program accessibility requirements and it establishes a similar reference for Title III entities (places of public accommodation) undertaking readily achievable barrier removal.

Because the state construction code and 2010 Standard does not apply to many recreation facilities, it is essential that you also be aware of and understand the existing federal

guidelines covering these types of facilities. On September 26, 2013 The Federal Architectural and Transportation Barriers Compliance Board (known as the Access Board) issued updated guidelines, entitled the Accessibility Guidelines for Outdoor Developed Areas. These guidelines are enforceable under the Architectural Barriers Act (ABA) Standards for federal agencies on November 26, 2013. They should eventually be adopted as enforceable standards for Title II and III agencies, but until that occurs, the existing ADA Standards must be followed when the two conflict.

Included in the Outdoor Guidelines are technical provisions for the number and types of recreation facilities including camping facilities, picnic facilities, viewing areas, trails and beach access routes. While none of these guidelines has yet been adopted for Title II and Title III agencies, they represent the best information available on developing barrier free recreation facilities. Questions regarding 2010 ADA standards and the Accessibility Guidelines for Outdoor developed Areas should be directed to the Department of Justice ADA Technical Assistance, 800-514-0301 (voice) or 800-514-0383 (TTY)."

ADA Accessibility Review

An ADA accessibility review was conducted in each park. A summary of the findings is given below and rated based on the above MDNR standards.

Tate Park

Tate Park is the primary active park within the Village of Clinton Park System. The Park received a MDNR rating of 3=most of the site elements meet 2010 ADA Standards for Accessible Design. Some of the facilities within the park were developed prior to the current ADA standards. As facilities are upgraded, they will meet the ADA Standards.

Veterans Memorial Park

Veterans Memorial Park is a passive park located in downtown Clinton. The Park received a MDNR rating of 4=the entire park meets 2010 ADA Standards for Accessible Design. The accessible parking space, all walkways and the memorial plaza are accessible. Should improvements be made to this park, all of the new facilities will meet the ADA Standards.

Water Works Park

Water Works Park is a primarily passive park located in the Village of Clinton. The Park received a MDNR rating of 1=none of the facilities meet 2010 ADA Standards for Accessible Design. The Park has accessible access from neighboring Tate Park, but the existing picnic area and Cabin are not currently accessible. As improvements are made to this park, all the new facilities will meet the ADA Standards for Accessible Design.

Smith Kimball Community Center

Smith Kimball Community Center is a historic structure repurposed as a community center. The Center received a MDNR rating of 2=some of the facilities meet 2010 ADA Standards for Accessible Design. The Center's first floor has had some adaptations completed to make the rest rooms accessible, however the second floor remains inaccessible. Future improvements will meet the ADA standards for accessible design.

LENAWEE COUNTY PARKS

Lenawee County owns and operates six public parks within the County. These parks include the following parks and additional information on the parks can be found on the Lenawee County website including the Community Recreation Plan.

BICENTENNIAL PARK

This 78-acre park has shelter areas with grills and tables, hand pump water and port-a-john, soccer field, volleyball, playground area, softball field and a natural hiking trail.

MEDINA PARK

This 40-acre park has two picnic shelters with grills and tables, water, restrooms, tennis courts, softball field and fishing.

RAMSDELL NATURE PARK

This 180-acre park has a shelter area with center fireplace, grills and tables, water, restroom, and playground equipment.

GERBER HILL

This 31 acre park has a picnic shelter with grills and tables, port-a-john, soccer field, baseball field, horseshoe pits, basketball, and playground equipment.

IRON LAKE

This one-acre site provides a boat launch and fishing on Iron Lake.

TAYLOR ROAD

This 80 acre parcel is undeveloped.

MICHIGAN STATE PARKS

The State of Michigan has four parks located within Lenawee County which include the following:

CAMBRIDGE JUNCTION HISTORIC STATE PARK

This 180 acre historic site includes a picnic area and visitor center.

W.J. HAYES STATE PARK

This 654 acre park includes 185 camp sites, mini-cabins, picnic areas, picnic shelter, playground, beach house, concessions/store, boat launch, interpretive program, swimming, fishing, and watchable wildlife.

LAKE HUDSON STATE PARK

This 2,700 acre park includes 50 camp sites, picnic area, picnic shelter, boat launch, swimming, hunting, fishing, and watchable wildlife.

SAND LAKE BOAT LAUNCH

This site provides a boat launch on Sand Lake.

CLINTON COMMUNITY SCHOOLS

Clinton Community Schools is a district that covers the Village of Clinton as well as seven surrounding townships. All of the school buildings and facilities are located within the Village and are often available for public recreational use and meetings for different clubs and organizations. The facilities available include:

CLINTON ELEMENTARY SCHOOL

Clinton Community Schools has one elementary building which has a large site with a playground. The site also has one ball field which is used by Little League for both boys and girls ball leagues. The school also has a multi-purpose room that is available for community events.

CLINTON MIDDLE SCHOOL

The Clinton Middle School has an indoor gym, an outdoor soccer field, and a media center that can be used.

CLINTON HIGH SCHOOL

The High School has several indoor spaces including a gymnasium, multi-purpose room, and classrooms that are used for community events and meetings. Outdoor facilities include two baseball fields, two softball fields, and football stadium.

OTHER COMMUNITY FACILITIES

Within the community are several non-public facilities that are also made available for community use either by the organization or for a fee.

WATER WHEEL ESTATES CLUB HOUSE

Water Wheel Estates is a manufactured home community that has a Club House that is available for members and rentals for community events and meetings.

COMMUNITY SPECIAL EVENTS & RECREATIONAL PROGRAMS

The Village of Clinton does not provide recreational programming staff. However, numerous programs are available through non-profit organizations within the community, many of which utilize Village park facilities. These opportunities include:

CLINTON FALL FESTIVAL

The Clinton Fall Festival is a non-profit organization of the Clinton Chamber of Commerce that plans and promotes an annual fall festival weekend in late September. Several of the main events are focused in Tate Park which includes over 250 arts and crafts booths, more than 500 classic cars, a parade, food booths, and concerts.

CLINTON LITTLE LEAGUE

This Clinton Little League is a non-profit organization that provides summer ball leagues for both boys and girls within the community. The games are played at the Clinton Elementary School and at Tate Park.

SOCCER

Soccer is offered through the Village of Clinton both boys and girls leagues.

BOY AND GIRL SCOUTS

Youth scouting programs are offered for both boys and girls within the community.

YOUTH FOOTBALL & CHEERLEADING

Clinton Football, part of Pop Warner Football provides youth football and cheerleading programs in the fall.

YOUTH BASKETBALL

Youth basketball programs for boys and girls are provided by the school district at the Clinton Elementary School.

CO-ED VOLLEYBALL

Adult co-ed volleyball is offered at the Clinton Elementary School and is organized by volunteers.

MEN'S BASKETBALL

Adult men's basketball is organized by volunteers and played at the Clinton Elementary School.

STATUS REPORT FOR ALL GRANT ASSISTED PARKS AND RECREATION FACILITIES

The Village of Clinton has received four previous Michigan Department of Natural Resources grants all for Tate Park. The most recent grant was given in 1998 for a canoe launch, parking lot, and bridge to the southern area of the park.

TF07-018 Tate Park Pathways & Fishing Dock
Project Type: Development
Appropriation Year: 2008
Grant Amount: \$297,600
Status: **Closed**

TF98-069 Tate Memorial Park
Project Type: Development
Appropriation Year: 1998
Grant Amount: \$49,500
Status: **Closed**

26-01363 Tate Park
Project Type: Development
Appropriation Year: 1984
Grant Amount: \$25,298
Status: **Closed**

26-01023 E Tate Park
Project Type: Acquisition
Appropriation Year: 1977
Grant Amount: \$26,190
Status: **Closed**

26-00851 Clinton Village Park
Project Type: Development
Appropriation Year: 1976
Grant Amount: \$13,002
Status: **Closed**

DESCRIPTION OF PLANNING PROCESS

The Planning Process Section includes a description of the overall process that was completed for the development of the Community Recreation Plan. The Planning Process included an assessment of existing park lands, a tour of the properties, opportunities for the public to participate, formal adoption of the plan, and submittal of the plan to local agencies and the Michigan Department of Natural Resources.

SYSTEM PLANNING METHOD

A System Method of Planning was completed which focused on the Village's priorities, needs, level of service and community-wide interests in parks and recreation. Tate Park is the primary location for public recreation within the community. It provides for the key recreational lands required as well as many recreation facilities. The parkland includes a wooded area/island, river access and large open spaces of athletic fields and picnic facilities, as well as undeveloped meadow areas. Based on this, the primary focus of this current plan is the continued focus on Tate Park.

DESCRIPTION OF THE PUBLIC INPUT PROCESS

This section of the plan provides a written description of the processes used to encourage and gather public input for the development of the plan.

PARK TOUR, INVENTORY, AND ADA ASSESSMENT

An initial tour of each park facility within the community was completed by Village staff to review and compare the previously completed park inventories and ADA assessments. Each of these areas of the document were updated and needs were documented for consideration within the planning process.

EARLY PUBLIC INPUT-PUBLIC ELECTRONIC SURVEY

An electronic public survey was developed utilizing SurveyMonkey. The survey was developed in August of 2021 and opened for public comment on August 19, 2021. The survey was advertised on the Village's website, via direct emails to stakeholders, and at various public functions. The Village Clerk also placed a public announcement in the Clinton Local Newspaper. The survey remained open during the entire planning process. The results of the survey were utilized in the updating of the Goals and Objectives as well as the Action Plan Sections. The results of the survey are included in the Appendix Section of this plan.

As of December 7, 2021, the following public comments were received and organized from the electronic survey.

1. Playground:
 - a. All-inclusive play equipment.
 - b. Replace playground mulch.
 - c. Shaded seating at playground.
 - d. More seating.
 - e. Repair adaptive swing in playground.
 - f. Remove sand box it's disgusting.
 - g. Make the sand box bigger.
2. Paved Path:
 - a. Paved path and benches around the softball fields to connect a loop.
 - b. Plant trees along pathway.
 - c. Lights on paths.
 - d. Connect trails to Tecumseh's path system.
 - e. Exercise stations along path.
 - f. Clear pathway on island.

3. Roads and Parking:
 - a. Pave front lots.
 - b. Pave roadways.
 - c. Improve parking lot south of ball fields.
 - d. Improve drive down to softball fields.
 - e. Rebuild park entrance.
 - f. The entrance island needs to be maintained or removed.
4. Softball Fields:
 - a. Rebuild softball infields. Gravel too rough.
 - b. Rebuild softball outfields.
 - c. Better drainage system for fields.
 - d. Rebuild dugouts.
 - e. Ballfield lights.
 - f. Better concession area with more covered seating.
 - g. Softball outfields need to be treated like soccer fields.
 - h. Netting that covers spectator areas near diamonds.
5. Bathrooms:
 - a. Rebuild bathrooms.
6. Miscellaneous:
 - a. Remove or replace some old signs that are worn out.
 - b. Drinking fountain stations.
 - c. Amphitheater.
 - d. Basketball courts.
 - e. Splash pad.
 - f. Dog Park.
 - g. Hold more events or activities in the park that are not sports related.
 - h. More trash or recycling receptacles.
 - i. Mountain bike trails.
 - j. Improve wheel chair access in park.
 - k. Football fields.
 - l. Pickle ball courts.
 - m. Community pool.
7. Maintenance:
 - a. Grounds are well kept.
 - b. Edge ballfields more often.
 - c. Someone is always mowing.

- d. Improve fishing areas.
- e. Difficulty navigating uneven ground.
- f. Fertilizing the grass is a health risk.

PARK COMMITTEE PUBLIC MEETING

The Village Council's Park Committee held a special meeting on December 15, 2021, at 7:00 p.m. in the Clinton Village Office to invite additional public discussion to discuss updating the Community Recreation Plan 2022-26, the public survey comments to date, and to make suggestions on updating the Plan.

NOTICE OF 30-DAY PLAN REVIEW PERIOD

A public notice was posted December 7, 2021, and published in the Clinton Local Newspaper on December 9, 2021, to announce the opportunity for public review of the plan document, the opportunity for public comment, and the upcoming final public hearing on the Plan on January 17, 2022. The notice was posted according to Village procedures and a public notice was placed in "The Clinton Local" newspaper. A copy of the notice, Affidavit of Publication, and the minutes of the meeting are included at the rear of this document in the Supporting Documentation.

RESOLUTION OF ADOPTION BY VILLAGE COUNCIL & FINAL PUBLIC HEARING

On January 24, 2022 a Final Public Hearing was held by the Village Council to receive comments regarding the plan. Following Final Public Hearing, the Village Council Adopted the Plan. Minutes of the Final Public Hearing, Adoption Resolution, and Minutes of the full meeting, including the public hearing, are included below. These documents are included at the rear of this document in the Supporting Documentation.

GOALS AND OBJECTIVES

The Goals and Objectives section of the plan provides goals for the future of parks and recreation within the community. These goals have been written for the Clinton community based on public input for current and future recreational opportunities. Each goal is further defined by the Objectives that follow. The Action Plan section of this plan determines proposed projects that help to meet these goals.

Goal No 1: **To provide multi-generational recreational opportunities and facilities within the community as the Village is comprised of persons of all ages.**

Objectives:

- a. To provide activities for each of the major age and activity groups.
- b. To provide for activities and experiences that can be enjoyed together with persons of multiple ages
- c. To allow for all persons of multiple generations, extended family groups, and large groups to universally enjoy the parks.
- d. Construct the following facilities:
 - i. Pathway Lighting along the Tate Park pathway to allow for extended use both morning and evening to include longer daily and seasonal use of the pathway.
 - ii. Horseshoes within Tate Park near the pavilion to enhance the facilities for groups and individual use.
 - iii. Redevelopment of the Tate Park entrance to provide for greater visibility and improves surfaces.
 - iv. Expand middle parking area in Tate Park to accommodate additional cars as the current parking is not sufficient on busy days/evenings at the park during athletic leagues and special park events.
 - v. Spray Park in Tate Park to add summer water play as public water play or swimming are available within the Village.

vi. Paving of the gravel drives and parking within Tate Park to improve ADA accessibility, reduce maintenance costs, and increase parking efficiency.

vii. Development of the south half of Tate Park to consolidate and provide for expanded youth and adult sports fields and supporting facilities at one location within the Village as fields are currently located at various locations throughout the Village making it difficult to share resources and facilities. The following projects for construction are a part of the Tate Park Master Plan:

-Drive and parking are to south end of the park to provide greater access to this area of the park as well as parking.

-South restroom/storage/concession building to serve new recreation facilities within the south end of the park as the distance is too far from the north end of the park.

-Connecting walkways in south end of park to provide for ADA accessibility access to all facilities.

-Play area adjacent to the new athletic facilities as the north play area is too great of a distance for children to play and be near the accompanying adults at the fields.

-New football/soccer field to accommodate recreational leagues.

-New baseball fields.

-Equestrian venue for competitive and training events as there is not a public ring available within the Village or surrounding areas.

-Dog Park with off lease areas for dogs.

Goal No 2: **To provide recreational facilities for persons of all abilities both mentally and physically.**

Objectives:

- a. To develop new facilities that will expand recreational opportunities for all residents.
- b. To develop new facilities that will meet the Americans with Disabilities Act, (ADA).
- c. To develop new facilities that integrate ADA accommodations in such a way that they are seamlessly used by all residents within the community and to not cause separation of users based on abilities.

As the Village improves each of the parks, the facilities are designed with ADA and Universal accessibility in mind in order to continue to increase recreational opportunities for the residents and visitors to the Village.

Goal No. 3: **To continue to support and encourage non-profit organizations to provide recreational programming and special events within the community. As the community is small and the financial resources are limited, the non-profit organizations provide recreational opportunities that the Village could not offer.**

Objectives

- a. The Village will continue to assist, as funds allow, the non-profit organizations through the development and maintenance of recreational facilities that support the athletic leagues and special events.

Goal No 4: **The Village will continue to utilize and develop Tate Park as a focus for Special Events.**

Objectives:

- a. The Tate Park Master Plan expands the facilities to improve opportunities for special events, including increased accessibility for all residents.
 - i. Expanded and improved drives and parking, restrooms, connecting walkways and other improvements as described in Goal No. 1.

Goal No. 5: **The Village will retain all existing park lands for the use and enjoyment of residents.**

Objectives

- a. The Village will not sell existing recreational lands.
- b. The Village will continue to maintain, to the best of its ability, the existing park facilities.
- b. The Village will continue to make improvements to the parks based on the Community Recreation Plan and as funding allows.

Goal No. 6: **To continue to provide, as much as possible, free use of the parks and facilities.**

Objectives:

- a. Continue to allow for open use of the park lands and to not charge admission to the facilities.
- b. Minimally charge, as required to cover costs, for special events and athletic field maintenance to keep the facilities available for public use.

Goal No. 7: **The Village has limited wooded natural areas within its Village limits and will retain the wooded area within Tate Park as a natural area.**

Objectives:

- a. The Tate Park Master Plan provides that the natural areas along the Raisin River will remain natural.
- b. The Tate Park Master Plan provides for trails and bridges through this area to provide ADA accessible access within the wooded natural area for access by all residents to this unique resource.

Goal No. 8: **Because the River Raisin is the only water course through the community, The Village would like to retain ownership of all of its property along the River Raisin for public use and enjoyment.**

Objectives:

- a. To retain river frontage as shown in the Tate Park Master Plan that retains the river frontage within the park and provides for ADA access to the river.
- b. Maintain both shore and dock fishing within Tate Park and expand these opportunities when funding opportunities allow. Provide new improvements in fish habitat as opportunities allow.
- c. To provide for small drop in boats that may be able to utilize the park for river access. The river is currently not navigable.

Goal No. 9: **To maintain Tate Park as the focus of recreation with the community and provide for its continued growth.**

Objectives:

- a. To purchase additional park lands adjacent to the existing Tate Park rather than at multiple locations within the Village.
- b. Utilize the Park Trust funds to the greatest extent possible to match grant opportunities which become available that fit the needs of the Tate Park Master Plan, the Goals and Objectives, and the Village's ability to maintain and care for the facilities.

ACTION PROGRAM

The Action Program states the proposed actions to be taken to carry out the Goals and Objectives within this Plan. The Action Program includes a discussion regarding land acquisition, programming, and facility development.

LAND ACQUISITION

In the development of the Tate Park Master Plan and this Plan, it was determined through the public comments, site plan review, and discussions, there is a desire to acquire additional lands adjacent to Tate Park to provide for future recreational needs. Additional parks were not desired, but rather expansion and improvements to Tate Park land and facilities. Additional parkland will continue to provide for consolidation of recreation facilities to the Tate Park location.

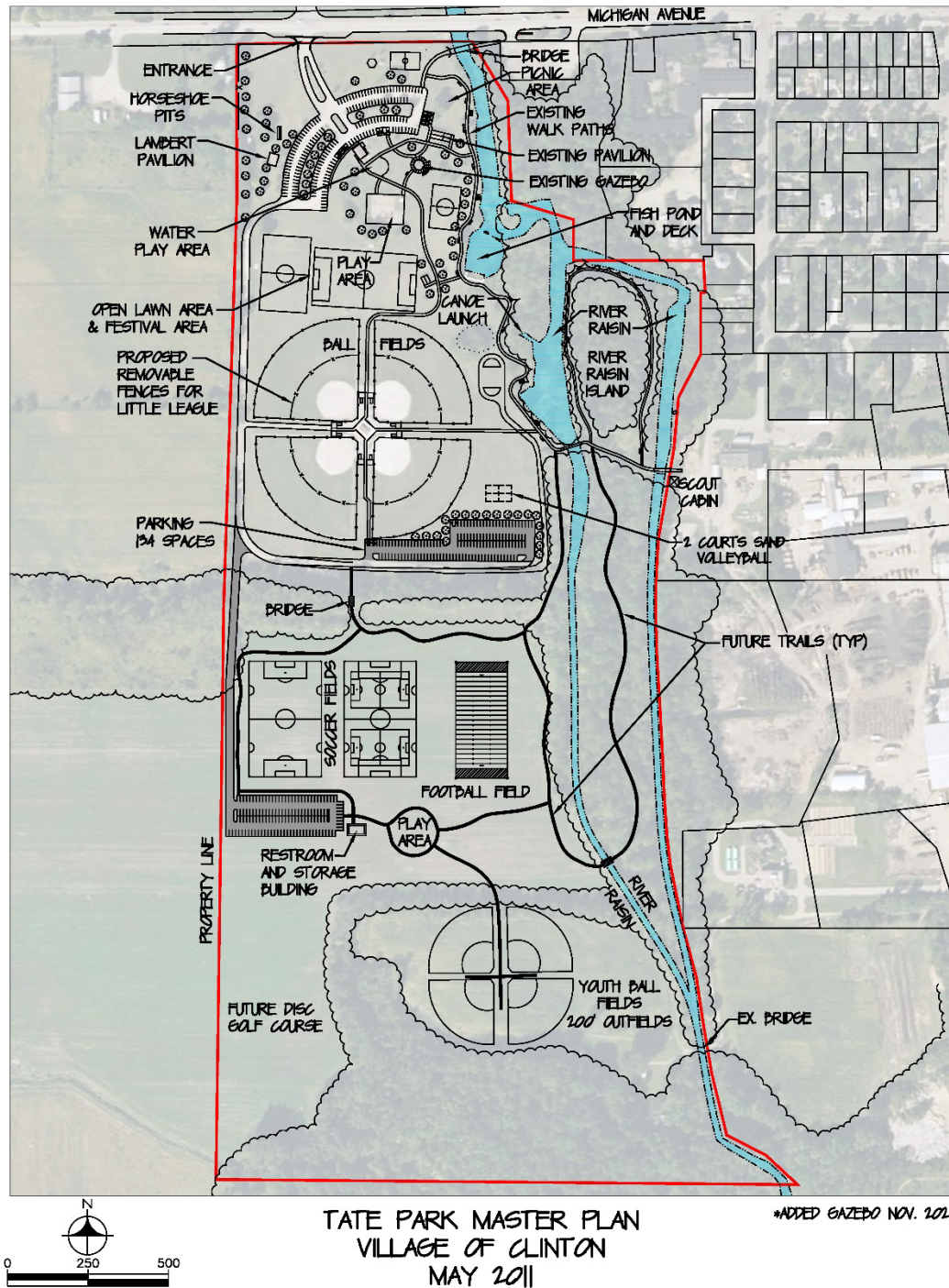
RECREATIONAL PROGRAMMING

Recreational programming has frequently been provided by non-profit organizations, volunteers and the Village of Clinton for athletic leagues and special events. The Village will continue to support these volunteer efforts as these groups have been highly effective and successful. Financial limitations will not allow the creation of a Parks and Recreation Department with a park director or programming staff.

FACILITY DEVELOPMENT

Facility development will be focused at Tate Park based on the Tate Park Master Plan that was completed and adopted by the Village in May of 2011. Based on the master plan, a capital improvements project list was developed that placed the projects in a systematic order based on needs voiced in the community, the age of current facilities, the financial cost, and numbers of residents benefited by the project. The breakout of the projects is included in the spread sheet that follows and descriptions of the projects are also given.

TATE PARK MASTER PLAN FOR REFERENCE



TATE PARK PROJECT LIST

The projects given in the chart below are identified as High, Medium, and Low Priorities are based on review the Village staff, Village Council, and public input and focus on Tate Park only. The Tate Park Trust Fund provides limited funding to help support the park capital improvements and is available for matching funds for grants and small projects. As funds are limited, development will be in a systematic and thoughtful manner.

1. HIGH PRIORITY PROJECTS

- a. All-inclusive play area
- b. Expand paved pathway system to create loop
- c. Pathway lighting
- d. Plant trees along pathway
- e. Replace adaptive swing
- f. Improve ADA compliance
- g. Shaded seating at playground
- h. Improve entrance drive and island landscaping
- i. Improve front parking lots
- j. Improve drive to softball fields
- k. Pave softball pedestrian areas for drainage and ADA accessibility

2. Medium Priority Projects

- a. Improve softball parking lot
- b. Remodel restrooms
- c. Horseshoes
- d. Drive and parking lot for south half of park
- e. Football and soccer fields
- f. South restroom/storage/concession stand building
- g. Connecting walkways in south area

3. Low Priority Projects

- a. Connect with the Tecumseh path
- b. Pickle ball courts

- a. Play area in south area
- b. Exercise stations along pathways
- c. Dog park
- d. Baseball diamond
- e. Spray park
- f. Equestrian venue

Project Descriptions

The proposed projects are as follows:

HIGH PRIORITY PROJECTS

All-Inclusive Play Area

Tate Park currently has a large play area located within the central area of the park which is not All-Inclusive concerning ADA and Universal Access. A new additional All-Inclusive Play Area, or renovation of the existing play area, will provide more modern play opportunities as well as access to and within the play area for visitors to the park including children and adults, allowing for enjoyment by more park visitors.

Expand the Paved Pathway Systems

The existing pathway system is very popular in the community. Additional pathways are proposed to be extended along the River Raisin and throughout the park to create more interconnected pathways for Universal Accessibility as well as access to more of the park's natural resources.

Exercise Stations Along Pathway

Add exercise stations along the paved pathways to provide ADA accessible exercise opportunities for all ages and abilities of park visitors. The pathway system is a popular place for walking exercise and these stations will increase the use and variety of exercise offered.

Movable Ball Field Fencing

Adding movable ball field fencing will allow the four existing fields to be used for both younger and older youth and adult play on the fields. This allows for better use of the park resources for both development and maintenance by limiting the number of fields through versatility.

Improve Existing Restroom Facilities

Renovate the existing restroom facilities to provide for nicer restrooms within the park as the existing facilities are several decades old. These renovations will also improve ADA & Universal access within the buildings and provide buildings that meet all of the new Building Codes.

Pathway Lighting

Lighting of the existing and proposed park pathways will allow for extended evening and early morning use of the pathways in the spring, winter and fall seasons for exercise and non-motorized transportation to and from the park.

Main Entrance Traffic & Landscape Improvements

The main entrance will be renovated to provide for a more attractive entrance and better traffic flow in and out on to U.S. 12. Improvements will also include additional landscape materials. Tate Park is a major focal point at the Village's west entrance and is the location for many special events. An improved entrance will enhance the ease of use and safety along U.S. 12 as well as increased natural beauty.

Improve Park Parking Lots, Entrance Drive, and Park Drives

These projects are expected to be completed in phases but are focused on converting the gravel areas into more improved facilities with Chip and Seal processes. These surfaces will allow for parking lot striping increasing the efficiency of parking, decrease routine grading of the current gravel facilities, improve conditions during inclement weather that can correspond with park events, and provide for overall easier maintenance and attractiveness.

Horseshoes

Add an additional horseshoe court to the park next to the existing court and upgrade both facilities to be ADA accessible.

MEDIUM PRIORITY PROJECTS

Bridge, Drive and Parking Area for South Area of Tate Park

These improvements will provide access and parking south of the existing drain to connect the existing park to the south end of the park.

Football Field

Construct a new youth football field south of the drain in the active sports area. This will provide a football field at the park and move towards the goal of relocating all recreational sports to Tate Park to facilitate shared parking, restroom, and concession facilities.

South Restroom Building/Storage

This building will provide for restrooms and storage south of the drain in the new active sports area.

Connecting Walkways in South Area of Park

Additional walking paths that provide additional connections and recreational opportunities. These walkways will provide ADA paved pathways that connect the athletic fields, parking lot, restrooms, play area, and the walkway along the river further creating a network of walkway loops through the park.

Relocate Sand Volleyball Courts to South End of Park

The sand volleyball courts will be relocated to the active sports area south of the drain. This will open up space for larger lawn areas and the river walkway.

Dog Park

A new Dog Park with a fenced area to provide recreational opportunities for dogs and their owners. The Dog Park will include connecting Universal Accessible pathways, gates, and a patio area for access and personal seating.

Play Area in South Area of Park

A second play area will be built in the southern end of the park to provide a play area for families at the soccer, football, and ball fields. The play area will be developed with the principals of All-Inclusive Play for persons of all abilities.

LOW PRIORITY PROJECTS

Spray Park

A new spray park will provide water play opportunities within Tate Park as the only outdoor water play venue within the Village. It will be located near existing water and sanitary sewer facilities in the northern end of the park. The Spray Park will be developed with the principals of Universal and ADA accessibility.

Ball Diamonds

New ball diamonds will be constructed in the south end of the park to replace existing fields at the Clinton Elementary School. This will consolidate all youth sports to Tate Park.

Equestrian Venue

A new Equestrian Venue will provide a focus for youth and adult equestrian events within the expanded rural community as equestrian venues are very limited throughout Lenawee County.

SUPPORTING DOCUMENTATION

The following supporting documentation will be added to the plan at final completion after adoption.

MDNR Grant Post Completion Self Certification Reports
Village of Clinton Parks and Recreation Survey 2022
Village of Clinton Parks & Rec Committee Motion of Support
Public Notice of Draft Plan for 30 Days of Public Comment and Public Hearing
Minutes from the Public Hearing and Village Council Meeting
Adoption of Plan by Village Council
Transmittal Letters to the Lenawee County and Region II Planning Commission

MDNR Grant Post Completion Self Certification Reports

**PUBLIC OUTDOOR RECREATION GRANT
POST-COMPLETION SELF-CERTIFICATION REPORT**

*This information required under authority of Part 19, PA 451 of 1994, as amended;
the Land and Water Conservation Fund Act of 1965, 78 Stat. 897 (1964); and Part 715, of PA 451 of 1994, as amended.*

GRANT TYPE: ☒ MICHIGAN NATURAL RESOURCES TRUST FUND ☐ CLEAN MICHIGAN INITIATIVE
(Please select one) ☐ LAND AND WATER CONSERVATION FUND ☐ RECREATION PASSPORT ☐ BOND FUND

GRANTEE: Village of Clinton

PROJECT NUMBER: 26-00851 (1976)

PROJECT TYPE: Development

PROJECT TITLE: Clinton Village (Tate) Park

PROJECT SCOPE: Parking, Picnic Equip, Restroom, Roadwork and Bridge, (2) Ballfields

TO BE COMPLETED BY LOCAL GOVERNMENT AGENCY (GRANTEE)

Name of Agency (Grantee)	Contact Person	Title
Village of Clinton	Kevin Cornish	Village Manager
Address	Telephone	
119 East Michigan Ave	517-456-7494	
City, State, ZIP	Email	
Clinton, MI 49236	cornishk@villageofclinton.org	

SITE DEVELOPMENT

Any change(s) in the facility type, site layout, or recreation activities provided?
If yes, please describe change(s).

☒ Yes ☐ No

Additional facilities have been added to the park. Gazebo, play area, pathways, soccer field, volleyball, picnic pavilion, and canoe/kayak launch.

Has any portion of the project site been converted to a use other than outdoor recreation? If yes, please describe what portion and describe use. (This would include cell towers and any non-recreation buildings.)

☐ Yes ☒ No

Are any of the facilities obsolete? If yes, please explain.

☐ Yes ☒ No

SITE QUALITY

Is there a park entry sign which identifies the property or facility as a public recreation area?
If yes, please provide a photograph of the sign. If no, please explain.

☒ Yes ☐ No

Are the facilities and the site being properly maintained? If no, please explain.

☒ Yes ☐ No

Is vandalism a problem at this site? If yes, explain the measures being taken to prevent or minimize vandalism.

☐ Yes ☒ No

POST COMPLETION SELF-CERTIFICATION REPORT - CONT'D

Is maintenance scheduled on a regular basis? If yes, give schedule. If no, please explain.

☒ Yes ☐ No

Weekly seasonal mowing, leaf removal, trash removal. Parking lot and facility maint. as required for athletic events, facility maintenance as required. Restroom maintenance.

GENERAL

Is a Program Recognition plaque permanently displayed at the site? If yes, please provide a photograph. (Not required for Bond Fund Grants)

☒ Yes ☐ No ☐ N/A

Is any segment of the general public restricted from using the site or facilities? (i.e. resident only, league only, boaters only, etc.) If yes, please explain.

☐ Yes ☒ No

Is a fee charged for use of the site or facilities? If yes, please provide fee structure.

☐ Yes ☒ No

What are the hours and seasons for availability of the site?

365 days a year from dawn to dusk.

COMMENTS (ATTACH SEPARATE SHEET IF MORE SPACE IS NEEDED)

POST COMPLETION SELF-CERTIFICATION REPORT - CONT'D

CERTIFICATION

I do hereby certify that I am duly elected, appointed and/or authorized by the Grantee named above and that the information and answers provided herein are true and accurate to the best of my personal knowledge, information and belief.

Kevin Cornish

Please print


Grantee Authorized Signature

01/26/2022

Date

Leah Webb

Please print


Witness Signature

01/26/2022

Date

Send completed report to:

**POST COMPLETION GRANT INSPECTION REPORTS
GRANTS MANAGEMENT
MICHIGAN DEPARTMENT OF NATURAL RESOURCES
PO BOX 30425
LANSING MI 48909-7925**

Village of Clinton Tate Park Grant Photos (MDNR Grants are at Tate Park)

Tate Park Entrance Sign



Tate Park MNRTF Sign



**PUBLIC OUTDOOR RECREATION GRANT
POST-COMPLETION SELF-CERTIFICATION REPORT**

*This information required under authority of Part 19, PA 451 of 1994, as amended;
the Land and Water Conservation Fund Act of 1965, 78 Stat. 897 (1964); and Part 715, of PA 451 of 1994, as amended.*

GRANT TYPE: ☒ MICHIGAN NATURAL RESOURCES TRUST FUND ☐ CLEAN MICHIGAN INITIATIVE
(Please select one) ☐ LAND AND WATER CONSERVATION FUND ☐ RECREATION PASSPORT ☐ BOND FUND

GRANTEE: Village of Clinton

PROJECT NUMBER: 26-01023 E (1977)

PROJECT TYPE: Acquisition

PROJECT TITLE: Tate Park

PROJECT SCOPE: Acquisition of 52 Acres of Land

TO BE COMPLETED BY LOCAL GOVERNMENT AGENCY (GRANTEE)

Name of Agency (Grantee)	Contact Person	Title
Village of Clinton	Kevin Cornish	Village Manager
Address	Telephone	
119 East Michigan Ave	517-456-7494	
City, State, ZIP	Email	
Clinton, MI 49236	cornishk@villageofclinton.org	

SITE DEVELOPMENT

Any change(s) in the facility type, site layout, or recreation activities provided?
If yes, please describe change(s).

☒ Yes ☐ No

Additional facilities have been added to the park. Gazebo, play area, pathways, soccer field, ballfields, volleyball, picnic pavilion, and canoe/kayak launch.

Has any portion of the project site been converted to a use other than outdoor recreation? If yes, please describe what portion and describe use. (This would include cell towers and any non-recreation buildings.)

☐ Yes ☒ No

Are any of the facilities obsolete? If yes, please explain.

☐ Yes ☒ No

SITE QUALITY

Is there a park entry sign which identifies the property or facility as a public recreation area?
If yes, please provide a photograph of the sign. If no, please explain.

☒ Yes ☐ No

Are the facilities and the site being properly maintained? If no, please explain.

☒ Yes ☐ No

Is vandalism a problem at this site? If yes, explain the measures being taken to prevent or minimize vandalism.

☐ Yes ☒ No

POST COMPLETION SELF-CERTIFICATION REPORT - CONT'D

Is maintenance scheduled on a regular basis? If yes, give schedule. If no, please explain. ☒ Yes ☐ No
Weekly seasonal mowing, leaf removal, trash removal. Parking lot and facility maint. as
required for athletic events, and facility maintenance. Restroom maintenance.

GENERAL

Is a Program Recognition plaque permanently displayed at the site? If yes, please provide a photograph. (Not required for Bond Fund Grants) ☒ Yes ☐ No ☐ N/A

Is any segment of the general public restricted from using the site or facilities? (i.e. resident only, league only, boaters only, etc.) If yes, please explain. ☐ Yes ☒ No

Is a fee charged for use of the site or facilities? If yes, please provide fee structure. ☐ Yes ☒ No

What are the hours and seasons for availability of the site?

365 days a year from dawn to dusk.

COMMENTS (ATTACH SEPARATE SHEET IF MORE SPACE IS NEEDED)

POST COMPLETION SELF-CERTIFICATION REPORT - CONT'D

CERTIFICATION

I do hereby certify that I am duly elected, appointed and/or authorized by the Grantee named above and that the information and answers provided herein are true and accurate to the best of my personal knowledge, information and belief.

Kevin Cornish

Please print


Grantee Authorized Signature

01/26/2022

Date

Leah Webb

Please print


Witness Signature

01/26/2022

Date

Send completed report to:

**POST COMPLETION GRANT INSPECTION REPORTS
GRANTS MANAGEMENT
MICHIGAN DEPARTMENT OF NATURAL RESOURCES
PO BOX 30425
LANSING MI 48909-7925**

Village of Clinton Tate Park Grant Photos (MDNR Grants are at Tate Park)

Tate Park Entrance Sign



Tate Park MNRTF Sign



**PUBLIC OUTDOOR RECREATION GRANT
POST-COMPLETION SELF-CERTIFICATION REPORT**

*This information required under authority of Part 19, PA 451 of 1994, as amended;
the Land and Water Conservation Fund Act of 1965, 78 Stat. 897 (1964); and Part 715, of PA 451 of 1994, as amended.*

GRANT TYPE: ☒ MICHIGAN NATURAL RESOURCES TRUST FUND ☐ CLEAN MICHIGAN INITIATIVE
(Please select one) ☐ LAND AND WATER CONSERVATION FUND ☐ RECREATION PASSPORT ☐ BOND FUND

GRANTEE: Village of Clinton

PROJECT NUMBER: 26-01363

PROJECT TYPE: Development

PROJECT TITLE: Tate Park Pathway and Fishing Docks

PROJECT SCOPE: Pedestrian Bridge, Picnic Shelter, (2) Softball Fields.

TO BE COMPLETED BY LOCAL GOVERNMENT AGENCY (GRANTEE)

Name of Agency (Grantee)	Contact Person	Title
Village of Clinton	Kevin Cornish	Village Manager
Address	Telephone	
119 East Michigan Ave	517-456-7494	
City, State, ZIP	Email	
Clinton, MI 49236	cornishk@villageofclinton.org	

SITE DEVELOPMENT

Any change(s) in the facility type, site layout, or recreation activities provided?
If yes, please describe change(s). ☒ Yes ☐ No

Additional facilities have been added to the park. Gazebo, play area, soccer field, volleyball.

Has any portion of the project site been converted to a use other than outdoor recreation? If yes, please describe what portion and describe use. (This would include cell towers and any non-recreation buildings.) ☐ Yes ☒ No

Are any of the facilities obsolete? If yes, please explain. ☐ Yes ☒ No

SITE QUALITY

Is there a park entry sign which identifies the property or facility as a public recreation area?
If yes, please provide a photograph of the sign. If no, please explain. ☒ Yes ☐ No

Are the facilities and the site being properly maintained? If no, please explain. ☒ Yes ☐ No

Is vandalism a problem at this site? If yes, explain the measures being taken to prevent or minimize vandalism. ☐ Yes ☒ No

POST COMPLETION SELF-CERTIFICATION REPORT - CONT'D

Is maintenance scheduled on a regular basis? If yes, give schedule. If no, please explain. ☒ Yes ☐ No
Weekly seasonal mowing, leaf removal, trash removal. Parking lot and facility maint. as
required for athletic events, facility maintenance as required. Restroom maintenance.

GENERAL

Is a Program Recognition plaque permanently displayed at the site? If yes, please provide a photograph. (Not required for Bond Fund Grants) ☒ Yes ☐ No ☐ N/A

Is any segment of the general public restricted from using the site or facilities? (i.e. resident only, league only, boaters only, etc.) If yes, please explain. ☐ Yes ☒ No

Is a fee charged for use of the site or facilities? If yes, please provide fee structure. ☐ Yes ☒ No

What are the hours and seasons for availability of the site?

365 days a year from dawn to dusk.

COMMENTS (ATTACH SEPARATE SHEET IF MORE SPACE IS NEEDED)

POST COMPLETION SELF-CERTIFICATION REPORT - CONT'D

CERTIFICATION

I do hereby certify that I am duly elected, appointed and/or authorized by the Grantee named above and that the information and answers provided herein are true and accurate to the best of my personal knowledge, information and belief.

Kevin Cornish

Please print


Grantee Authorized Signature

01/26/2022

Date

Leah Webb

Please print


Witness Signature

01/26/2022

Date

Send completed report to:

**POST COMPLETION GRANT INSPECTION REPORTS
GRANTS MANAGEMENT
MICHIGAN DEPARTMENT OF NATURAL RESOURCES
PO BOX 30425
LANSING MI 48909-7925**

Village of Clinton Tate Park Grant Photos (MDNR Grants are at Tate Park)

Tate Park Entrance Sign



Tate Park MNRTF Sign



**PUBLIC OUTDOOR RECREATION GRANT
POST-COMPLETION SELF-CERTIFICATION REPORT**

*This information required under authority of Part 19, PA 451 of 1994, as amended;
the Land and Water Conservation Fund Act of 1965, 78 Stat. 897 (1964); and Part 715, of PA 451 of 1994, as amended.*

GRANT TYPE: ☒ MICHIGAN NATURAL RESOURCES TRUST FUND ☐ CLEAN MICHIGAN INITIATIVE
(Please select one) ☐ LAND AND WATER CONSERVATION FUND ☐ RECREATION PASSPORT ☐ BOND FUND

GRANTEE: Village of Clinton

PROJECT NUMBER: TF07-018

PROJECT TYPE: Development

PROJECT TITLE: Tate Park Pathway and Fishing Docks

PROJECT SCOPE: Pathway, Benches, Fish Habitat, Pathways/Bridge, Pav. Exp. Picnic Tables

TO BE COMPLETED BY LOCAL GOVERNMENT AGENCY (GRANTEE)

Name of Agency (Grantee) Village of Clinton	Contact Person Kevin Cornish	Title Village Manager
Address 119 East Michigan Ave	Telephone 517-456-7494	
City, State, ZIP Clinton, MI 49236	Email cornishk@villageofclinton.org	

SITE DEVELOPMENT

Any change(s) in the facility type, site layout, or recreation activities provided?
If yes, please describe change(s).

☒ Yes ☐ No

Additional facilities have been added to the park. Gazebo, play area, soccer field, volleyball.

Has any portion of the project site been converted to a use other than outdoor recreation? If yes, please describe what portion and describe use. (This would include cell towers and any non-recreation buildings.)

☐ Yes ☒ No

Are any of the facilities obsolete? If yes, please explain.

☒ Yes ☒ No

SITE QUALITY

Is there a park entry sign which identifies the property or facility as a public recreation area?
If yes, please provide a photograph of the sign. If no, please explain.

☒ Yes ☐ No

Are the facilities and the site being properly maintained? If no, please explain.

☒ Yes ☐ No

Is vandalism a problem at this site? If yes, explain the measures being taken to prevent or minimize vandalism.

☐ Yes ☒ No

POST COMPLETION SELF-CERTIFICATION REPORT - CONT'D

Is maintenance scheduled on a regular basis? If yes, give schedule. If no, please explain.

☒ Yes ☐ No

Weekly seasonal mowing, leaf removal, trash removal. Parking lot and facility maint. as
required for athletic events, facility maintenance as required. Restroom maintenance.

GENERAL

Is a Program Recognition plaque permanently displayed at the site? If yes, please provide a photograph. (Not required for Bond Fund Grants)

☒ Yes ☐ No ☐ N/A

Is any segment of the general public restricted from using the site or facilities?
(i.e. resident only, league only, boaters only, etc.) If yes, please explain.

☐ Yes ☒ No

Is a fee charged for use of the site or facilities? If yes, please provide fee structure.

☐ Yes ☒ No

What are the hours and seasons for availability of the site?

365 days a year from dawn to dusk.

COMMENTS (ATTACH SEPARATE SHEET IF MORE SPACE IS NEEDED)

POST COMPLETION SELF-CERTIFICATION REPORT - CONT'D

CERTIFICATION

I do hereby certify that I am duly elected, appointed and/or authorized by the Grantee named above and that the information and answers provided herein are true and accurate to the best of my personal knowledge, information and belief.

Kevin Cornish

Please print


Grantee Authorized Signature

01/26/2022

Date

Leah Webb

Please print


Witness Signature

01/26/2022

Date

Send completed report to: **POST COMPLETION GRANT INSPECTION REPORTS
GRANTS MANAGEMENT
MICHIGAN DEPARTMENT OF NATURAL RESOURCES
PO BOX 30425
LANSING MI 48909-7925**

Village of Clinton Tate Park Grant Photos (MDNR Grants are at Tate Park)

Tate Park Entrance Sign



Tate Park MNRTF Sign



**PUBLIC OUTDOOR RECREATION GRANT
Post-Completion Self-Certification Report**

*This information required under authority of Part 19, PA 451 of 1994, as amended;
the Land and Water Conservation Fund Act of 1965, 78 Stat. 897 (1964); and Part 715, of PA 451 of 1994, as amended.*

GRANT TYPE: ☒ MICHIGAN NATURAL RESOURCES TRUST FUND ☐ CLEAN MICHIGAN INITIATIVE
(Please select one) ☐ LAND AND WATER CONSERVATION FUND ☐ RECREATION PASSPORT ☐ BOND FUND

GRANTEE: Village of Clinton

PROJECT NUMBER: TF88-069

PROJECT TYPE: Development

PROJECT TITLE: Tate Memorial Park

PROJECT SCOPE: Canoe Dock, Nature Tr., Shelter

TO BE COMPLETED BY LOCAL GOVERNMENT AGENCY (GRANTEE)

Name of Agency (Grantee)	Contact Person	Title
Village of Clinton	Kevin Cornish	Village Manager
Address	Telephone	
119 East Michigan Ave	517-456-7494	
City, State, ZIP	Email	
Clinton, MI 49236	cornishk@villageofclinton.org	

SITE DEVELOPMENT

Any change(s) in the facility type, site layout, or recreation activities provided?
If yes, please describe change(s). ☒ Yes ☐ No

Additional facilities have been added to the park. Gazebo, play area, soccer field, volleyball.

Has any portion of the project site been converted to a use other than outdoor recreation? If yes, please describe what portion and describe use. (This would include cell towers and any non-recreation buildings.) ☐ Yes ☒ No

Are any of the facilities obsolete? If yes, please explain. ☒ Yes ☒ No

SITE QUALITY

Is there a park entry sign which identifies the property or facility as a public recreation area?
If yes, please provide a photograph of the sign. If no, please explain. ☒ Yes ☐ No

Are the facilities and the site being properly maintained? If no, please explain. ☒ Yes ☐ No

Is vandalism a problem at this site? If yes, explain the measures being taken to prevent or minimize vandalism. ☐ Yes ☒ No

POST COMPLETION SELF-CERTIFICATION REPORT - CONT'D

Is maintenance scheduled on a regular basis? If yes, give schedule. If no, please explain.

☒ Yes ☐ No

Weekly seasonal mowing, leaf removal, trash removal. Parking lot and facility maint. as required for athletic events, facility maintenance as required. Restroom maintenance.

GENERAL

Is a Program Recognition plaque permanently displayed at the site? If yes, please provide a photograph. (Not required for Bond Fund Grants)

☒ Yes ☐ No ☐ N/A

Is any segment of the general public restricted from using the site or facilities? (i.e. resident only, league only, boaters only, etc.) If yes, please explain.

☐ Yes ☒ No

Is a fee charged for use of the site or facilities? If yes, please provide fee structure.

☐ Yes ☒ No

What are the hours and seasons for availability of the site?

365 days a year from dawn to dusk.

COMMENTS (ATTACH SEPARATE SHEET IF MORE SPACE IS NEEDED)

The two tennis courts and two shuffleboard courts listed on the MDNR grant list were not constructed with the grant project and are not within the park.

POST COMPLETION SELF-CERTIFICATION REPORT - CONT'D

CERTIFICATION

I do hereby certify that I am duly elected, appointed and/or authorized by the Grantee named above and that the information and answers provided herein are true and accurate to the best of my personal knowledge, information and belief.

Kevin Cornish

Please print


Grantee Authorized Signature

01/26/2022

Date

Leah Webb

Please print


Witness Signature

01/26/2022

Date

Send completed report to:

**POST COMPLETION GRANT INSPECTION REPORTS
GRANTS MANAGEMENT
MICHIGAN DEPARTMENT OF NATURAL RESOURCES
PO BOX 30425
LANSING MI 48909-7925**

Village of Clinton Tate Park Grant Photos (MDNR Grants are at Tate Park)

Tate Park Entrance Sign



Tate Park MNRTF Sign



Village of Clinton Parks and Recreation Survey 2022

Village of Clinton Parks and Recreation Survey Final Results

January 24, 2022

Parks and Recreation Public Survey

As part of the development of the new Community Recreation Plan for the years 2022-2026, a public survey was conducted to receive input in the planning process. The survey was opened on August 19, 2021, with the results of the survey presented January 24, 2022, at the Village Council's formal review and adoption of the Plan.

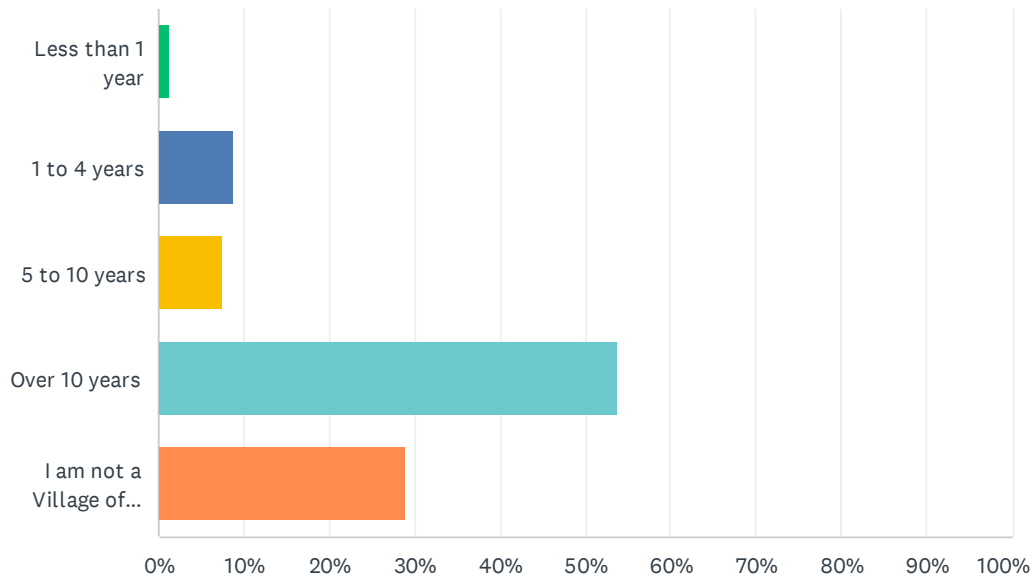
This report includes 162 survey responses of individuals ranging in age from 18 years to over 75 years of age.

The survey was administered through an electronic Survey Monkey format. The Village advertised the survey via email, social media, flyers, and the Village's website.

A summary of the responses received, as well as the comments from the open-ended questions are included in the attached report.

Q1 How many years have you been a resident of the Village of Clinton?

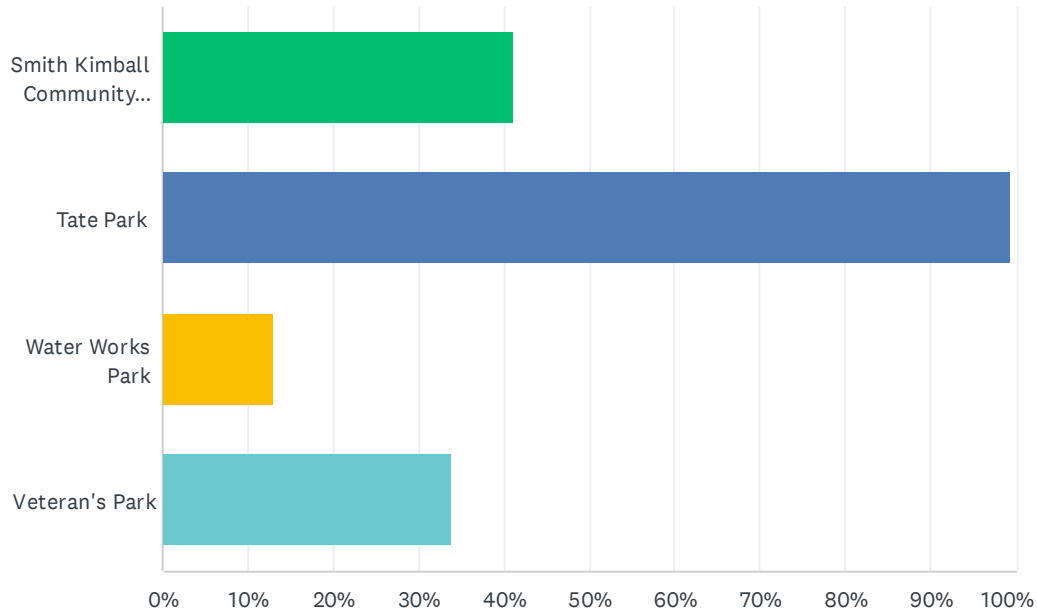
Answered: 162 Skipped: 0



ANSWER CHOICES	RESPONSES	
Less than 1 year	1.23%	2
1 to 4 years	8.64%	14
5 to 10 years	7.41%	12
Over 10 years	53.70%	87
I am not a Village of Clinton resident	29.01%	47
TOTAL		162

Q2 Which parks or facilities have you visited during the last year? (select all that you have visited)

Answered: 153 Skipped: 9

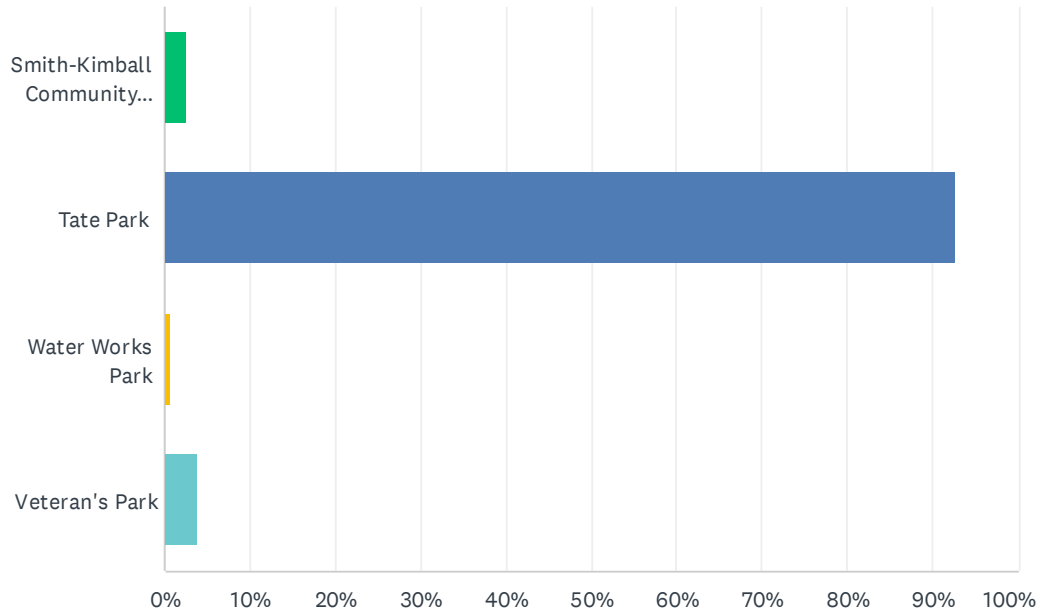


ANSWER CHOICES		RESPONSES	
Smith Kimball Community Center		41.18%	63
Tate Park		99.35%	152
Water Works Park		13.07%	20
Veteran's Park		33.99%	52
Total Respondents: 153			

#	OTHER (PLEASE SPECIFY)	DATE
1	All of the things :)	8/25/2021 8:15 PM
2	Library	8/25/2021 7:10 PM

Q3 Which park or facility did you visit the MOST during the last year? (select ONLY one)

Answered: 153 Skipped: 9

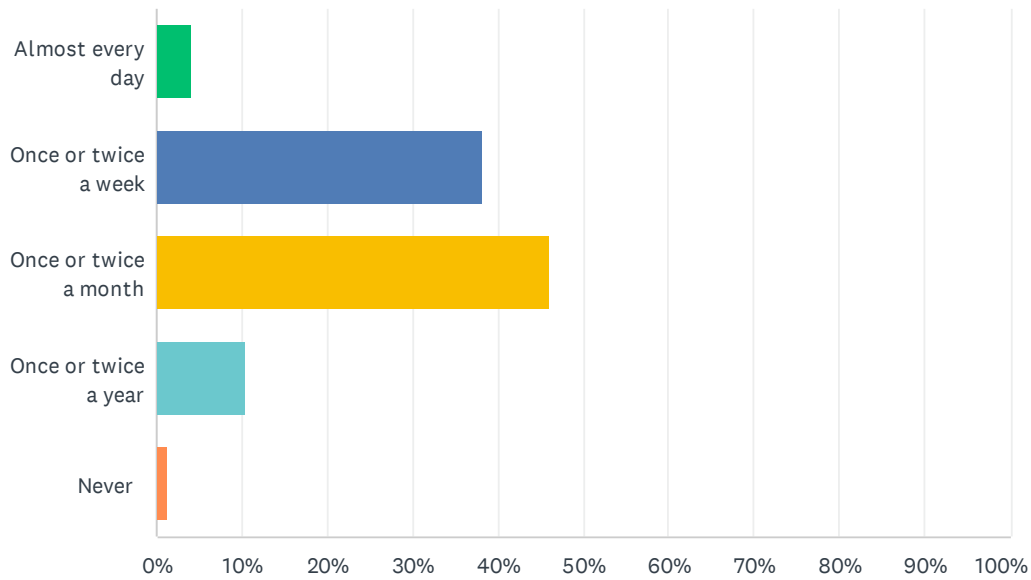


ANSWER CHOICES		RESPONSES	
Smith-Kimball Community Center		2.61%	4
Tate Park		92.81%	142
Water Works Park		0.65%	1
Veteran's Park		3.92%	6
TOTAL			153

#	OTHER (PLEASE SPECIFY)	DATE
	There are no responses.	

Q4 How often would you say you visit a Village park?

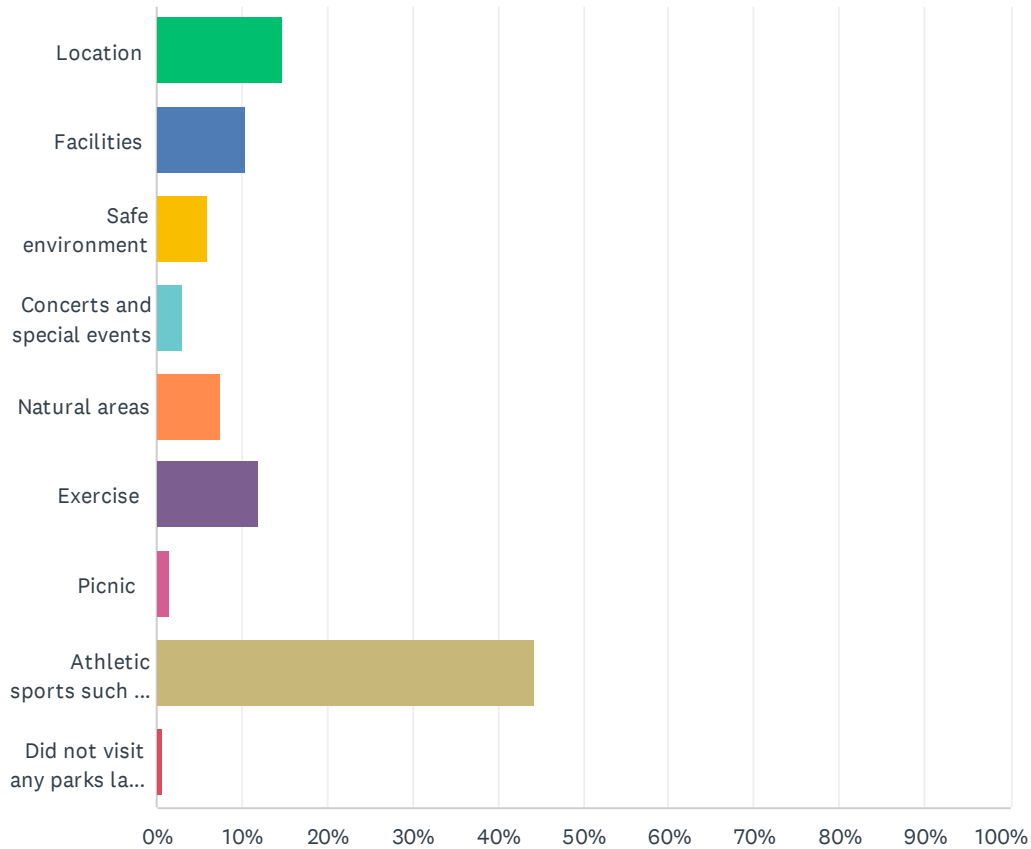
Answered: 152 Skipped: 10



ANSWER CHOICES	RESPONSES	
Almost every day	3.95%	6
Once or twice a week	38.16%	58
Once or twice a month	46.05%	70
Once or twice a year	10.53%	16
Never	1.32%	2
TOTAL		152

Q5 Which of the following is the biggest factor impacting your decision to visit a park in the last year?

Answered: 135 Skipped: 27



ANSWER CHOICES	RESPONSES	
Location	14.81%	20
Facilities	10.37%	14
Safe environment	5.93%	8
Concerts and special events	2.96%	4
Natural areas	7.41%	10
Exercise	11.85%	16
Picnic	1.48%	2
Athletic sports such as soccer, softball, baseball, etc.	44.44%	60
Did not visit any parks last year	0.74%	1
TOTAL		135

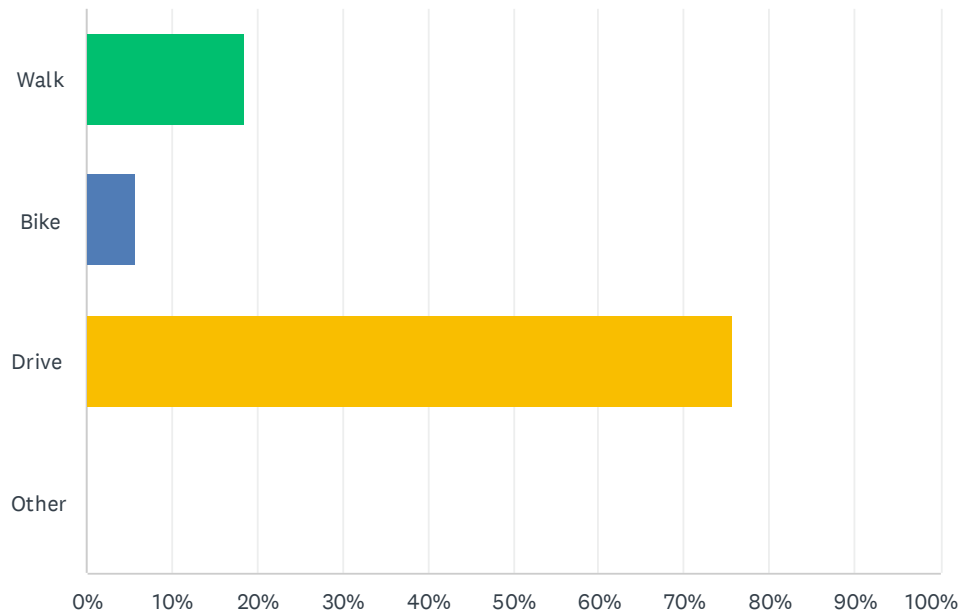
#	OTHER (PLEASE SPECIFY)	DATE
---	------------------------	------

Village of Clinton Parks & Recreation Survey 2021

1	I visit Veteran's Park about 10 times a week because I walk through it to get to work. I'd like to commend those who take care of the Park. It's beautiful. Love the lighting and new statues.	8/28/2021 4:57 PM
2	Lunches during Covid	8/28/2021 4:01 PM
3	Playground equipment	8/27/2021 11:14 AM
4	Didn't hardly visit due to the LACK of events	8/26/2021 11:40 AM
5	Playground and safe area for the kids.	8/26/2021 11:15 AM
6	Whether it was open. Tate park seemed to be closed a lot in the Spring this year.	8/25/2021 9:08 PM
7	Play area for kiddos	8/25/2021 8:48 PM
8	Got to make time to get to one	8/25/2021 8:12 PM
9	play ground area	8/25/2021 7:53 PM
10	Meeting up with friends to play on the playground	8/25/2021 7:44 PM
11	Playground	8/25/2021 7:25 PM
12	ADA Access	8/25/2021 7:24 PM
13	This should be a multiple selection answer. We need more community events at the park	8/25/2021 7:15 PM

Q6 What mode of transportation do you most often use to travel to a park?

Answered: 140 Skipped: 22



ANSWER CHOICES	RESPONSES
Walk	18.57% 26
Bike	5.71% 8
Drive	75.71% 106
Other	0.00% 0
TOTAL	140

#	OTHER (PLEASE SPECIFY)	DATE
1	Drive, bike and walk	8/25/2021 10:23 PM
2	Walk or drive	8/25/2021 7:15 PM

Q7 What is your favorite recreational activity?

Answered: 118 Skipped: 44

#	RESPONSES	DATE
1	Baseball	1/19/2022 1:43 AM
2	Playing with the kids.	9/6/2021 8:12 AM
3	walking	9/2/2021 11:07 AM
4	Baseball	8/31/2021 2:54 PM
5	Biking	8/30/2021 9:54 PM
6	Baseball	8/29/2021 9:33 PM
7	Biking	8/29/2021 7:16 PM
8	Basketball	8/29/2021 5:42 PM
9	Summertime activities	8/29/2021 4:17 PM
10	Enjoying the nature. Walking dog	8/29/2021 2:00 PM
11	Hiking	8/29/2021 11:00 AM
12	Soccer, T-ball	8/28/2021 6:24 PM
13	Watching TV lol but, when going to a Park. It involves my grandkids. ALL of our Parks are very well maintained, accessible, safe and family friendly. I would attend the Smith Kimball events more except it's been so darn hot lately.	8/28/2021 4:57 PM
14	Eating and watching the river	8/28/2021 4:01 PM
15	Walking	8/27/2021 9:49 PM
16	Fishing	8/27/2021 3:55 PM
17	Bike riding! I would love to have the entire oath around the park paved.	8/27/2021 10:09 AM
18	Riding a bike	8/26/2021 8:25 PM
19	Baseball and hiking	8/26/2021 5:00 PM
20	Softball or volleyball	8/26/2021 11:45 AM
21	Photography	8/26/2021 11:40 AM
22	Running around with the kids on the playground, playing soccer with them or running the bases.	8/26/2021 11:15 AM
23	Softball	8/26/2021 9:16 AM
24	Walking and biking	8/26/2021 9:16 AM
25	running	8/26/2021 9:02 AM
26	Running	8/26/2021 7:56 AM
27	Walking and biking	8/26/2021 7:46 AM
28	Running	8/26/2021 6:56 AM
29	Walking	8/26/2021 6:46 AM
30	Baseball and softball	8/26/2021 6:38 AM
31	Soccer	8/26/2021 3:12 AM

Village of Clinton Parks & Recreation Survey 2021

32	Softball	8/26/2021 2:12 AM
33	Walking	8/26/2021 12:09 AM
34	Sports	8/25/2021 10:43 PM
35	baseball/ softball	8/25/2021 10:41 PM
36	Baseball	8/25/2021 10:32 PM
37	Walking	8/25/2021 10:23 PM
38	Baseball/ softball	8/25/2021 10:11 PM
39	Playground use	8/25/2021 10:08 PM
40	Swimming	8/25/2021 10:07 PM
41	Hiking & yoga	8/25/2021 10:00 PM
42	Hiking	8/25/2021 9:45 PM
43	Baseball/softball	8/25/2021 9:38 PM
44	Kids love the playground, playing in the river, playing sports in Tate Park and adults like to walk/run the paths	8/25/2021 9:36 PM
45	Walking	8/25/2021 9:29 PM
46	Playset for son	8/25/2021 9:18 PM
47	Watching son play baseball	8/25/2021 9:16 PM
48	Walking	8/25/2021 9:15 PM
49	Walking	8/25/2021 9:12 PM
50	Hiking	8/25/2021 9:11 PM
51	Biking	8/25/2021 9:10 PM
52	Baseball/softball	8/25/2021 9:08 PM
53	Walking	8/25/2021 9:08 PM
54	Walking	8/25/2021 9:06 PM
55	Playground and nature walks	8/25/2021 9:04 PM
56	Baseball	8/25/2021 8:58 PM
57	Visiting with friends	8/25/2021 8:56 PM
58	We love the playground and we walk the trails (just yesterday) I also love how clean the bathrooms are.	8/25/2021 8:56 PM
59	Running	8/25/2021 8:51 PM
60	Running	8/25/2021 8:48 PM
61	Playgrounds, ball fields	8/25/2021 8:48 PM
62	Mountain biking	8/25/2021 8:45 PM
63	Sports	8/25/2021 8:42 PM
64	The play ground. The baseball fields and soccer fields. The volleyball courts are nice	8/25/2021 8:37 PM
65	Soccer	8/25/2021 8:36 PM
66	Walking	8/25/2021 8:31 PM
67	Walking	8/25/2021 8:31 PM
68	Baseball	8/25/2021 8:25 PM

Village of Clinton Parks & Recreation Survey 2021

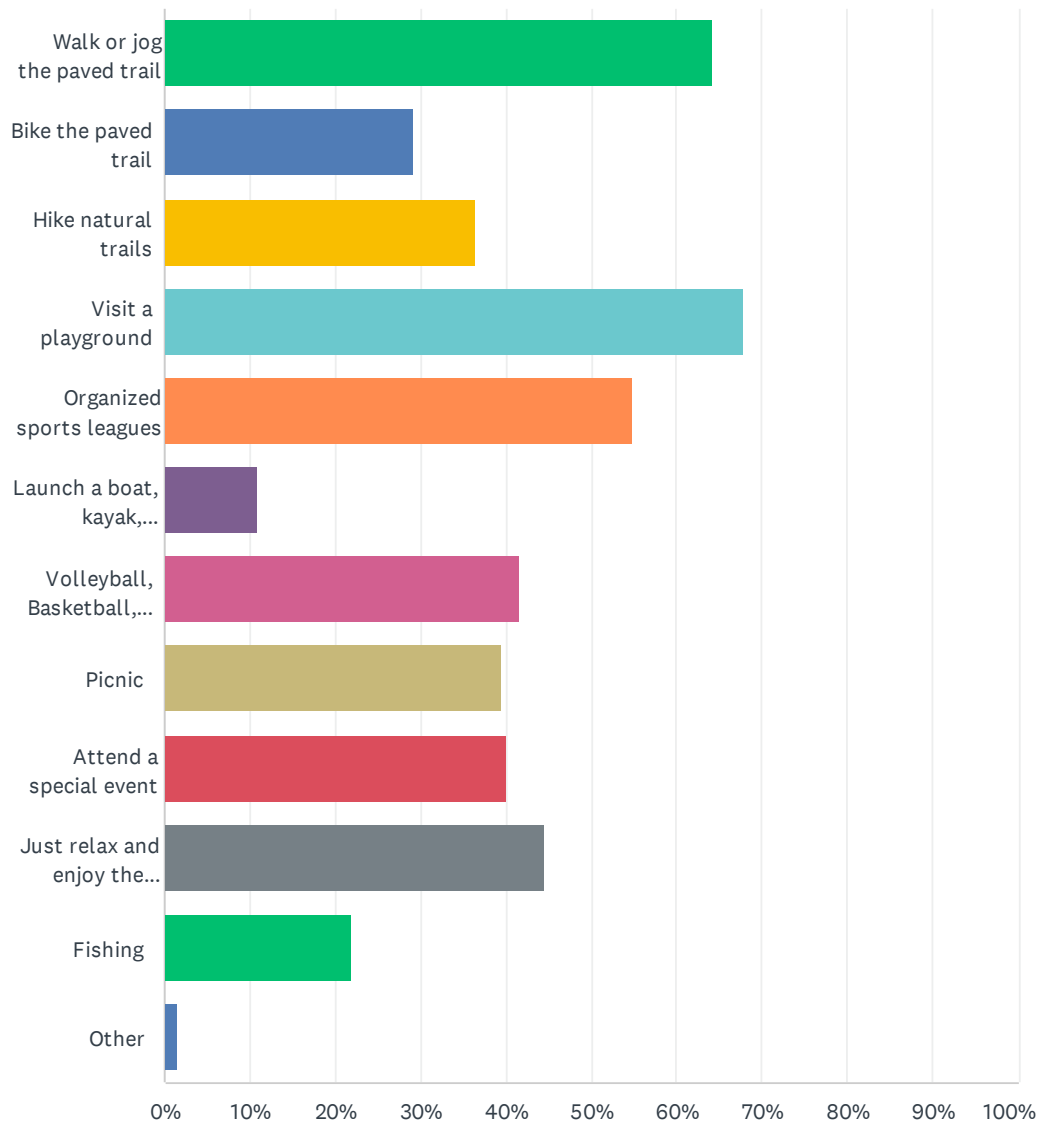
69	the swings and stuff that my granddaughter loves to play on	8/25/2021 8:25 PM
70	Running	8/25/2021 8:24 PM
71	Attending concerts	8/25/2021 8:23 PM
72	Walking, softball	8/25/2021 8:16 PM
73	Soccer	8/25/2021 8:15 PM
74	Watching the kids play sports	8/25/2021 8:14 PM
75	Walking and biking	8/25/2021 8:09 PM
76	Walking	8/25/2021 8:04 PM
77	Biking	8/25/2021 8:03 PM
78	Walking	8/25/2021 8:03 PM
79	Fishing	8/25/2021 8:02 PM
80	Nature walks and exercise	8/25/2021 8:01 PM
81	Music	8/25/2021 8:00 PM
82	Horse riding	8/25/2021 7:57 PM
83	Fishing	8/25/2021 7:57 PM
84	Walking	8/25/2021 7:56 PM
85	Softball	8/25/2021 7:56 PM
86	Walking	8/25/2021 7:54 PM
87	bike	8/25/2021 7:53 PM
88	Walking	8/25/2021 7:49 PM
89	Walking	8/25/2021 7:43 PM
90	Hikes	8/25/2021 7:40 PM
91	Walking	8/25/2021 7:39 PM
92	Softball, soccer, park	8/25/2021 7:37 PM
93	Going on hikes	8/25/2021 7:32 PM
94	Walking	8/25/2021 7:31 PM
95	My son uses the playground equipment	8/25/2021 7:31 PM
96	Softball	8/25/2021 7:29 PM
97	Basketball	8/25/2021 7:29 PM
98	Volleyball	8/25/2021 7:28 PM
99	Slow pitch softball	8/25/2021 7:27 PM
100	Basketball	8/25/2021 7:27 PM
101	Play ground	8/25/2021 7:25 PM
102	Playground	8/25/2021 7:25 PM
103	Walking	8/25/2021 7:24 PM
104	Swimming	8/25/2021 7:24 PM
105	Biking	8/25/2021 7:23 PM
106	Basketball or volleyball since having a baby walking	8/25/2021 7:23 PM

Village of Clinton Parks & Recreation Survey 2021

107	Baseball	8/25/2021 7:18 PM
108	Frisbee and hiking	8/25/2021 7:18 PM
109	Walking	8/25/2021 7:17 PM
110	Walking or some physical activity unless there's a festival then it's nice to see what's going on	8/25/2021 7:15 PM
111	Riding my bike	8/25/2021 7:14 PM
112	Baseball	8/25/2021 7:14 PM
113	Walking	8/25/2021 7:13 PM
114	Running, but kids love the playground	8/25/2021 7:11 PM
115	Walking	8/25/2021 7:08 PM
116	Hiking	8/25/2021 7:08 PM
117	Watching my Grandchildren enjoying their playtime on the playground equipment	8/25/2021 7:08 PM
118	Golf	8/25/2021 7:07 PM

Q8 What do you do when you visit a park? Check all that apply

Answered: 137 Skipped: 25



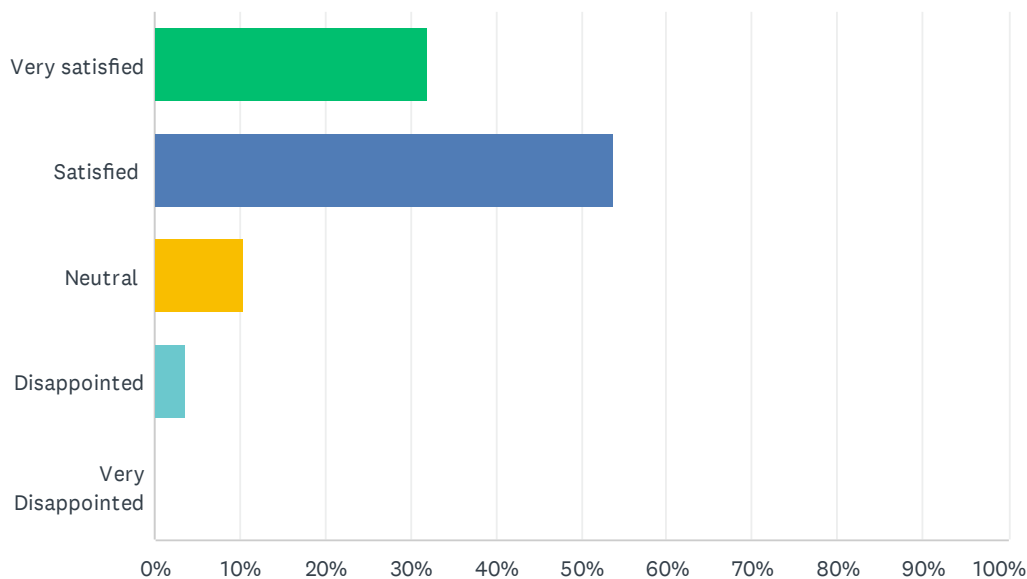
Village of Clinton Parks & Recreation Survey 2021

ANSWER CHOICES	RESPONSES	
Walk or jog the paved trail	64.23%	88
Bike the paved trail	29.20%	40
Hike natural trails	36.50%	50
Visit a playground	67.88%	93
Organized sports leagues	54.74%	75
Launch a boat, kayak, paddleboard or canoe	10.95%	15
Volleyball, Basketball, Soccer, Baseball/Softball	41.61%	57
Picnic	39.42%	54
Attend a special event	40.15%	55
Just relax and enjoy the outdoors	44.53%	61
Fishing	21.90%	30
Other	1.46%	2
Total Respondents: 137		

#	OTHER (PLEASE SPECIFY)	DATE
1	meet with friends	9/2/2021 11:08 AM
2	Yoga in gazebo	8/25/2021 10:01 PM
3	Yoga in the pavilion	8/25/2021 9:12 PM
4	Swimming	8/25/2021 7:24 PM

Q9 What is your overall impression of the parks you visit?

Answered: 134 Skipped: 28



ANSWER CHOICES	RESPONSES	
Very satisfied	32.09%	43
Satisfied	53.73%	72
Neutral	10.45%	14
Disappointed	3.73%	5
Very Disappointed	0.00%	0
TOTAL		134

#	COMMENTS	DATE
1	The grounds are well kept and Clinton is STARTING to head in the right direction but MUCH MORE needs to be done.	8/26/2021 11:41 AM
2	The baseball/softball fields need to be updated. The gravel material in the infield is not good and the outfield has holes and uneven ground.	8/26/2021 6:40 AM
3	The mulch in the playground area is not up to code. It is not safe for the height of equipment. The bathrooms need updated. There needs to be a dog run so dogs are not off leash while at the park. Dogs are a real concern as several have approached my children while biking and playing at the park.	8/25/2021 10:13 PM
4	Wish the roads were paved	8/25/2021 8:26 PM
5	Special needs swing is always broken so my son cannot use it. Love the paved trails and nature trails at Tate Park.	8/25/2021 8:05 PM
6	Would like to see a water park near the playground for the kids.	8/25/2021 7:27 PM
7	Not much to do or see but about what would be expected from a local village park. It is disappointing how many of the signs and info graphics have not been maintained and are in a	8/25/2021 7:25 PM

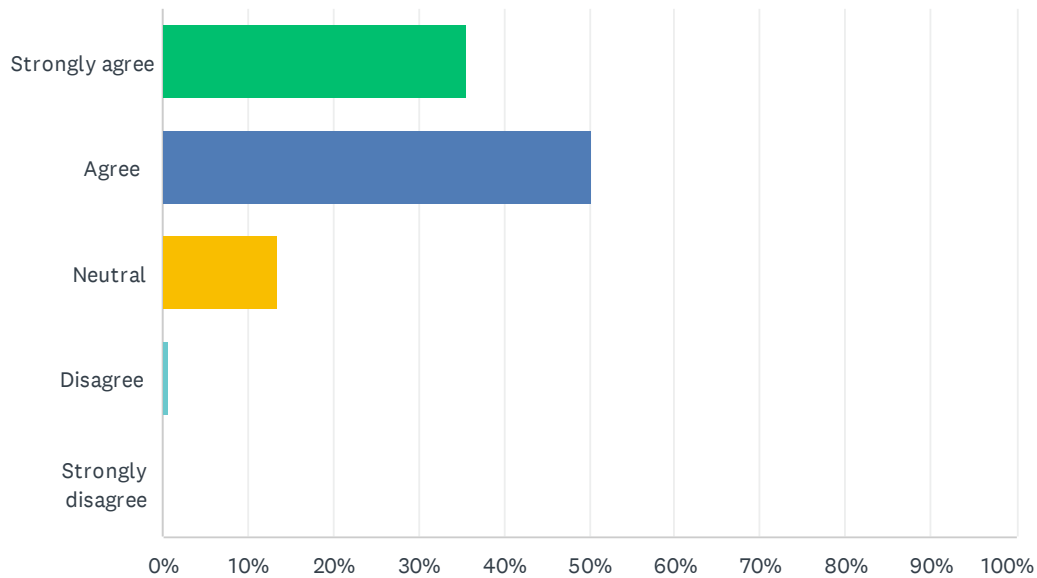
Village of Clinton Parks & Recreation Survey 2021

state of serious disrepair. This presents the attitude that nobody cares about the way the park looks.

8	I think going into Tate park if we can't control the flower garden and groom it better we should get rid of it	8/25/2021 7:15 PM
---	--	-------------------

Q10 The park facilities are clean:

Answered: 135 Skipped: 27

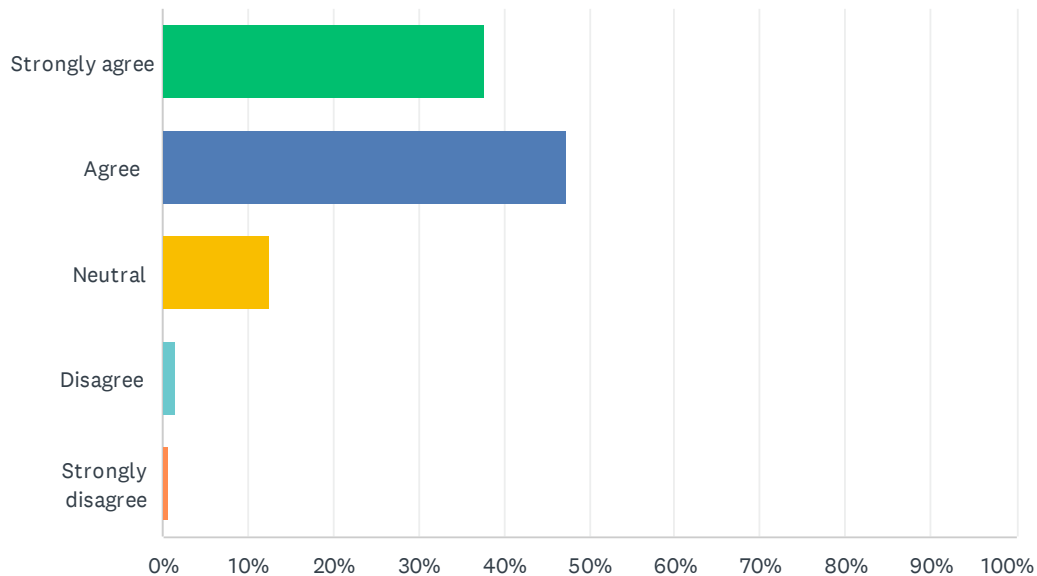


ANSWER CHOICES		RESPONSES	
Strongly agree		35.56%	48
Agree		50.37%	68
Neutral		13.33%	18
Disagree		0.74%	1
Strongly disagree		0.00%	0
TOTAL			135

#	COMMENTS	DATE
1	need more trash cans and it would be nice to have recycling cans next to trash cans	8/25/2021 9:38 PM
2	I've never used them.	8/25/2021 9:09 PM

Q11 The park facilities are well maintained:

Answered: 135 Skipped: 27

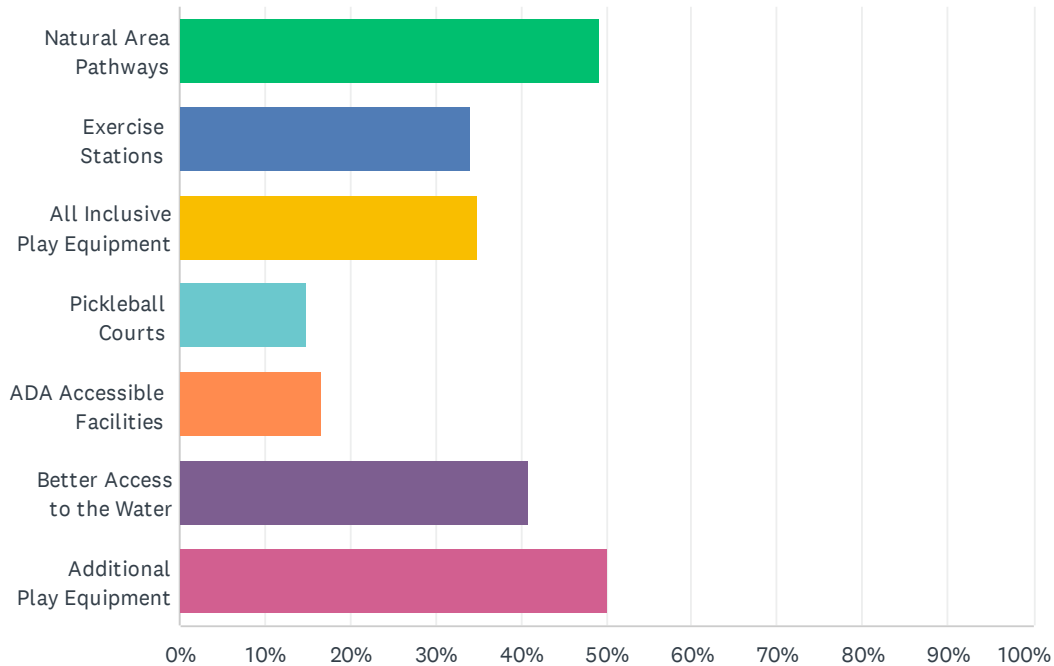


ANSWER CHOICES	RESPONSES	
Strongly agree	37.78%	51
Agree	47.41%	64
Neutral	12.59%	17
Disagree	1.48%	2
Strongly disagree	0.74%	1
TOTAL		135

#	COMMENTS	DATE
1	Someone is always mowing	8/28/2021 4:02 PM
2	The baseball fields are old, fields need edged, dugouts and benches, bleachers, building all need upgrades. That area of the park is the exact same as it was back when I was a kid playing on those fields. Parking back there is rough as well. Needs a lot of TLC to make it comparable to other baseball parks.	8/25/2021 10:13 PM
3	To the best of my knowledge they are maintained well.	8/25/2021 9:09 PM
4	Bathrooms need remodeling	8/25/2021 8:24 PM
5	See earlier comment about special needs swing.	8/25/2021 8:05 PM
6	See comments above about disrepair	8/25/2021 7:25 PM
7	Seems as if whenever there is a softball tournament the grass is way too tall	8/25/2021 7:15 PM
8	I'd like to see more care to the softball fields. The outfield grass needs to be treated like the soccer fields	8/25/2021 7:08 PM

Q12 What type of facilities or improvements would you like to see added to the Village of Clinton parks? (Select all that you are interested in)

Answered: 120 Skipped: 42



ANSWER CHOICES	RESPONSES	
Natural Area Pathways	49.17%	59
Exercise Stations	34.17%	41
All Inclusive Play Equipment	35.00%	42
Pickleball Courts	15.00%	18
ADA Accessible Facilities	16.67%	20
Better Access to the Water	40.83%	49
Additional Play Equipment	50.00%	60
Total Respondents: 120		

#	OTHER DESIRES:	DATE
1	Improvements to the baseball fields. Batting cages, pitching bullpens. Electronic scoreboards.	1/19/2022 1:47 AM
2	a splash pad	9/2/2021 11:10 AM
3	Better parking for little league fields.	8/28/2021 6:27 PM
4	I've thought about an Ice Rink in the Winter but, honestly unless you're in a Hockey League, who owns Ice Skates anymore? Saline had a great Community Ice Skating rink decades ago-I grew up in Saline. Not sure it would be worth it for us here in Clinton. A Splash Pad might be a nice feature down at Tate Park.	8/28/2021 5:01 PM

Village of Clinton Parks & Recreation Survey 2021

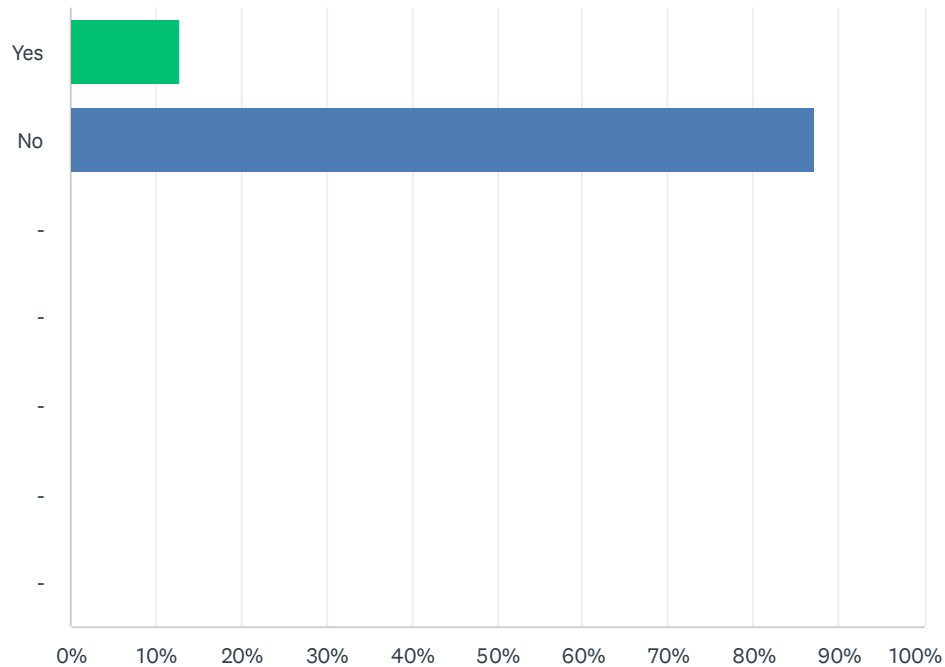
5	More paved pathways.	8/27/2021 10:11 AM
6	A butterfly preserve with an acre or two of milkweed.	8/26/2021 8:27 PM
7	More activities that are NOT organized sports related. Tate Park can be used for so much more than it currently is.	8/26/2021 11:43 AM
8	Nice Splash Pad (bigger than the small one at Cal Zorn Park)	8/26/2021 9:19 AM
9	basketball courts	8/26/2021 9:03 AM
10	Expand Kiwanis Trail to Clinton so that safe walking and biking to Tecumseh and Adrian is possible. This would be a great benefit to Clinton.	8/26/2021 7:52 AM
11	Don't really feel a need for any of the above. Just marked one to proceed	8/26/2021 6:42 AM
12	Splash pad for children	8/26/2021 6:41 AM
13	Im happy as is	8/26/2021 3:14 AM
14	water/ splash pad	8/25/2021 10:42 PM
15	Splash pad/water recreation for kids	8/25/2021 10:34 PM
16	Drinking fountains/water stations	8/25/2021 10:26 PM
17	Splash pad like Tecumseh has. Better field conditions and facilities for the baseball/softball area. Dog Run to keep dogs out of play areas for kids.	8/25/2021 10:16 PM
18	Lights for ball fields	8/25/2021 10:15 PM
19	Splash Pad	8/25/2021 9:40 PM
20	A water pad, like the one located in Tecumseh at the Cal Zorn Park.	8/25/2021 9:21 PM
21	Splash pad	8/25/2021 9:11 PM
22	Updated softball fields	8/25/2021 9:10 PM
23	Splash pad	8/25/2021 9:06 PM
24	A Splash pad and more shade trees near the baseball fields would be nice.	8/25/2021 9:04 PM
25	Is there a splash pad? If not we would love a splash pad	8/25/2021 8:57 PM
26	Not sure if it's possible, but not having to wait so long for bathrooms to be open in spring.	8/25/2021 8:56 PM
27	Splash pad	8/25/2021 8:49 PM
28	Mountain bike trails	8/25/2021 8:47 PM
29	Connected bike trailhead to Tecumseh	8/25/2021 8:37 PM
30	Paved roads	8/25/2021 8:28 PM
31	Longer running paths, pull up bars, better fishing	8/25/2021 8:26 PM
32	Seating and shade for parents at the playground	8/25/2021 8:26 PM
33	It's a park	8/25/2021 8:15 PM
34	Ampitheater	8/25/2021 8:04 PM
35	Lights for the softball/baseball fields	8/25/2021 7:58 PM
36	Splash pad	8/25/2021 7:40 PM
37	Splash pad	8/25/2021 7:33 PM
38	Splash pad	8/25/2021 7:31 PM
39	Sand volleyball	8/25/2021 7:30 PM
40	Water park next to the playground.	8/25/2021 7:28 PM
41	Pool or splash park	8/25/2021 7:25 PM

Village of Clinton Parks & Recreation Survey 2021

42	A splash pad similar to Tecumseh	8/25/2021 7:24 PM
43	Better concession area more seating Bigger better bathrooms Netting that covers spectator areas near ball Diamonds	8/25/2021 7:17 PM
44	Splash pad for the kids! Amphitheater would also be really nice for summer concerts.	8/25/2021 7:13 PM

Q13 It is a goal to strive to make each park as barrier-free/ADA accessible as possible for the convenience and enjoyment of visitors with disabilities.
Do you have a household member with a disability?

Answered: 133 Skipped: 29



ANSWER CHOICES	RESPONSES	
Yes	12.78%	17
No	87.22%	116
-	0.00%	0
-	0.00%	0
-	0.00%	0
-	0.00%	0
-	0.00%	0
Total Respondents: 133		

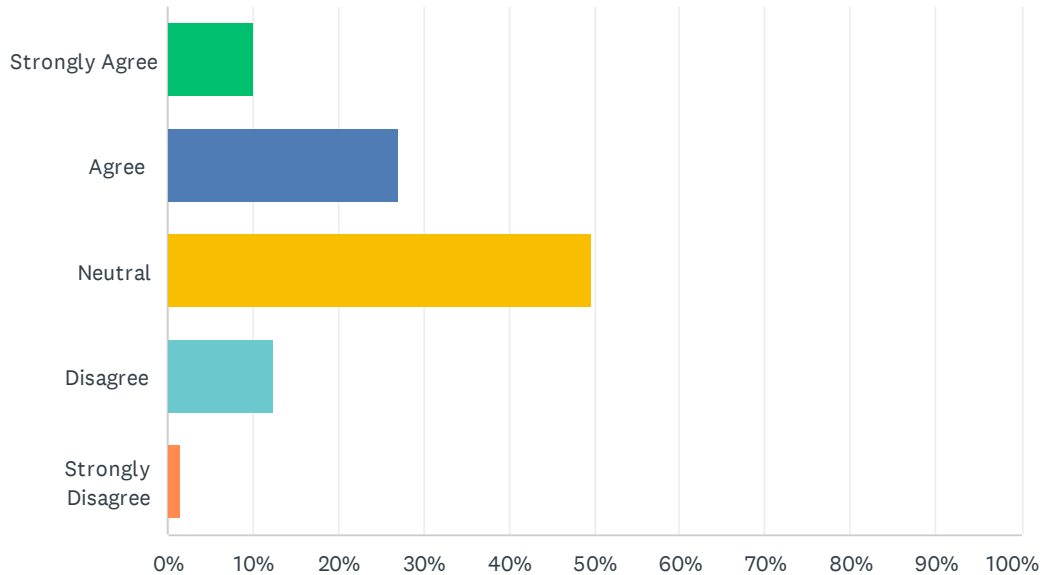
#	IF YES, PLEASE HELP US BY SPECIFYING THE DISABILITY	DATE
1	Limited walking	8/29/2021 7:19 PM
2	Difficulty navigating uneven ground	8/29/2021 2:02 PM
3	Limited walking ability	8/28/2021 6:27 PM
4	Aging. Weak heart and bad knees, climbing any stairs is very difficult and trip hazards are frightening.	8/26/2021 7:52 AM

Village of Clinton Parks & Recreation Survey 2021

5	Bad knees, walks with a cane	8/25/2021 10:26 PM
6	Rheumatoid arthritis. Hard time walking and currently using a cane. Needs to sit and take breaks often so having benches every so often is a great help.	8/25/2021 9:12 PM
7	Trouble walking	8/25/2021 8:26 PM
8	Cognitive and mobility issues	8/25/2021 8:19 PM
9	It's personal	8/25/2021 8:15 PM
10	Cerebral Palsy, Epilepsy, Wheelchair User, Deafblind	8/25/2021 7:44 PM
11	Don't care	8/25/2021 7:28 PM
12	Wheel chair bound	8/25/2021 7:25 PM

Q14 The current level of ADA accessibility is acceptable for park enjoyment:

Answered: 129 Skipped: 33

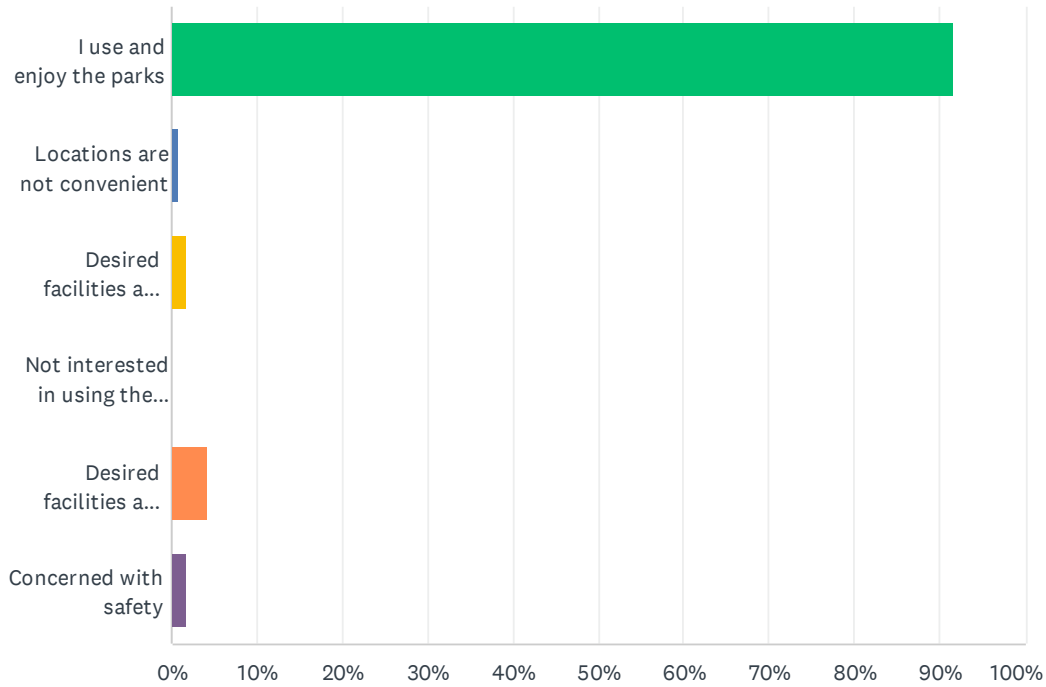


ANSWER CHOICES	RESPONSES	
Strongly Agree	10.08%	13
Agree	27.13%	35
Neutral	49.61%	64
Disagree	12.40%	16
Strongly Disagree	1.55%	2
Total Respondents: 129		

#	OTHER (PLEASE SPECIFY)	DATE
1	I don't have a disability or anyone in my household with one but I would think it probably could be more ADA friendly	8/25/2021 9:13 PM
2	The playground could definitely use more seating areas.	8/25/2021 9:12 PM
3	I can't answer that because I don't know enough about accessibility. We are blessed. I will say that I love the paved walkway to the baseball fields. My elderly mother can actually come to the little league games at Tate Park. That is not the case for other parks in the league. So thank you for that!!	8/25/2021 9:04 PM
4	NA	8/25/2021 8:49 PM
5	While there are trails to walk, etc, there is no wheelchair accessible play equipment. And the one swing intended for special needs is always broken.	8/25/2021 8:07 PM
6	The one adaptive swing is broken and unsafe for our son. The wooded trails have been blocked in a way that a wheelchair could not proceed.	8/25/2021 7:44 PM

Q15 If you do not use any of the parks, which of the following is the PRIMARY reason impacting your decision?

Answered: 119 Skipped: 43

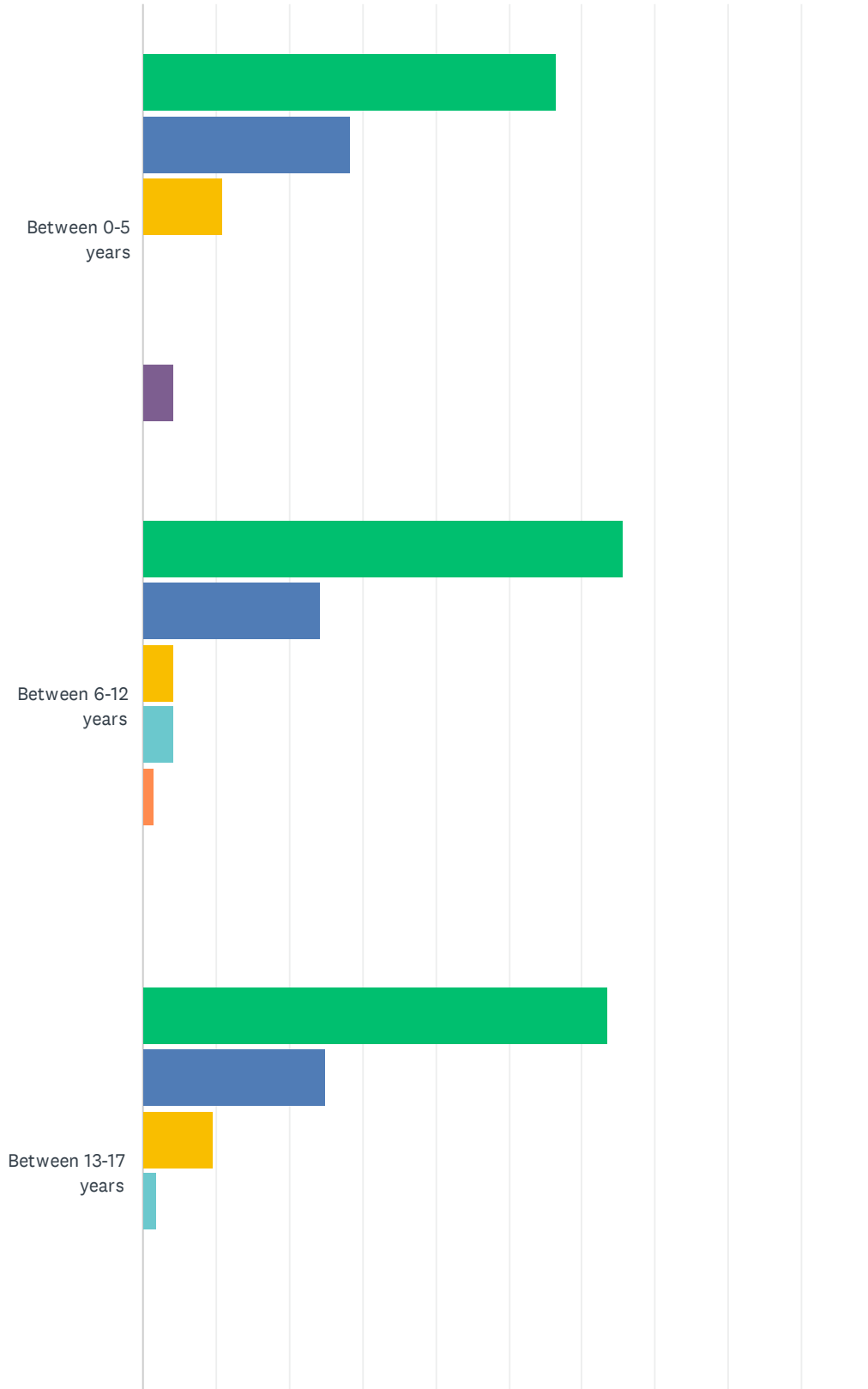


ANSWER CHOICES	RESPONSES	
I use and enjoy the parks	91.60%	109
Locations are not convenient	0.84%	1
Desired facilities are not ADA Accessible	1.68%	2
Not interested in using the parks	0.00%	0
Desired facilities are not available	4.20%	5
Concerned with safety	1.68%	2
TOTAL		119

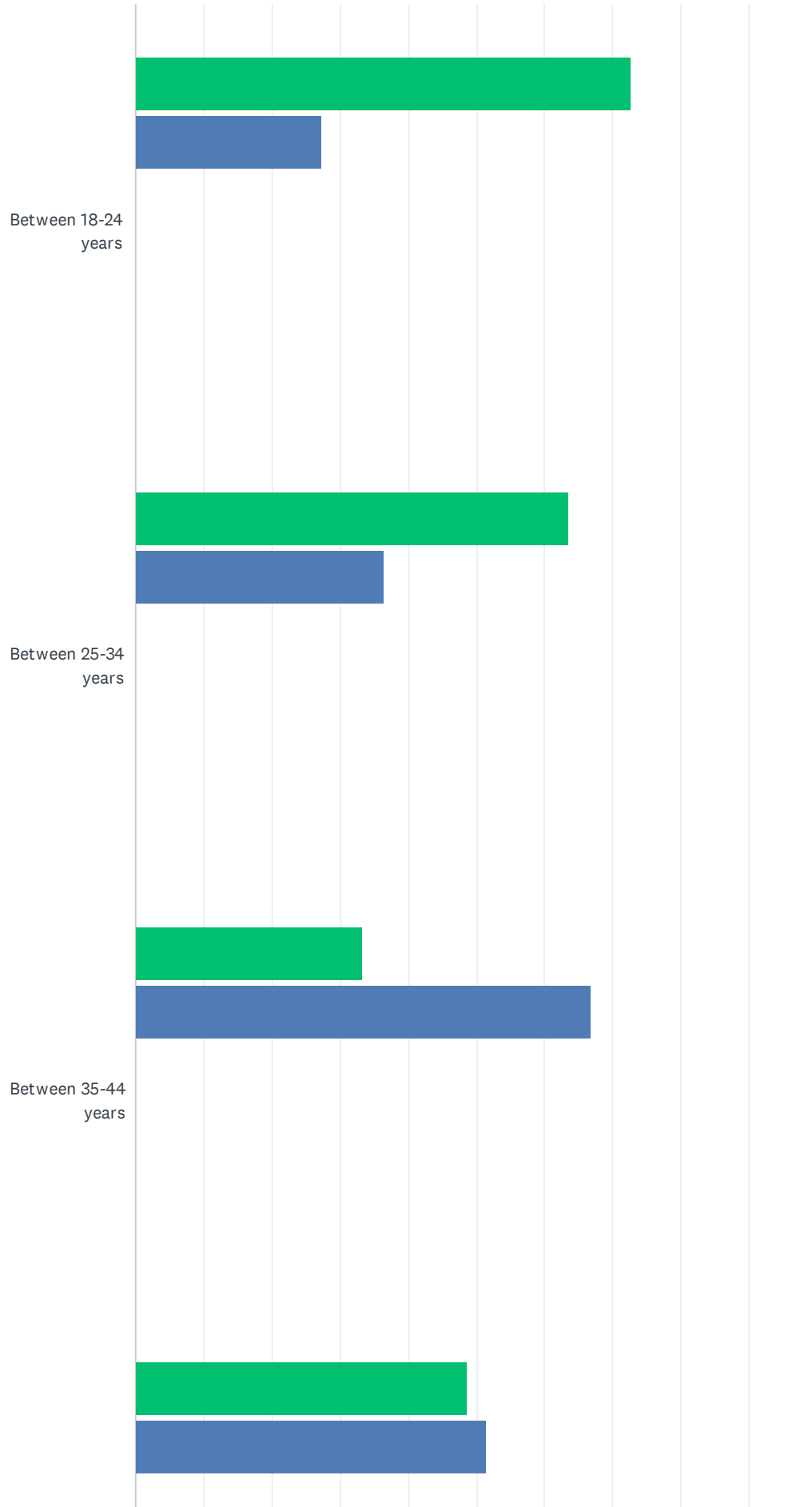
#	OTHER (PLEASE SPECIFY)	DATE
1	The lack of activities not related to organized sports.	8/26/2021 11:43 AM
2	Smith Kimball is not ADA accessible	8/25/2021 9:38 PM
3	Not enough there to warrant frequent visits	8/25/2021 8:26 PM
4	Na	8/25/2021 8:16 PM

Q16 How many persons are in your household within the following age groups?

Answered: 132 Skipped: 30



Village of Clinton Parks & Recreation Survey 2021



Village of Clinton Parks & Recreation Survey 2021

Between 45-54
years



Between 55-64
years

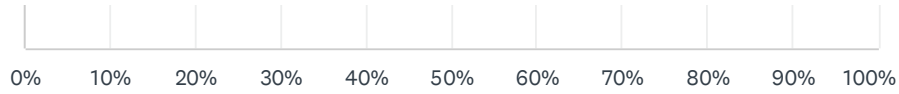


Between 65-74
years



75 years and
older

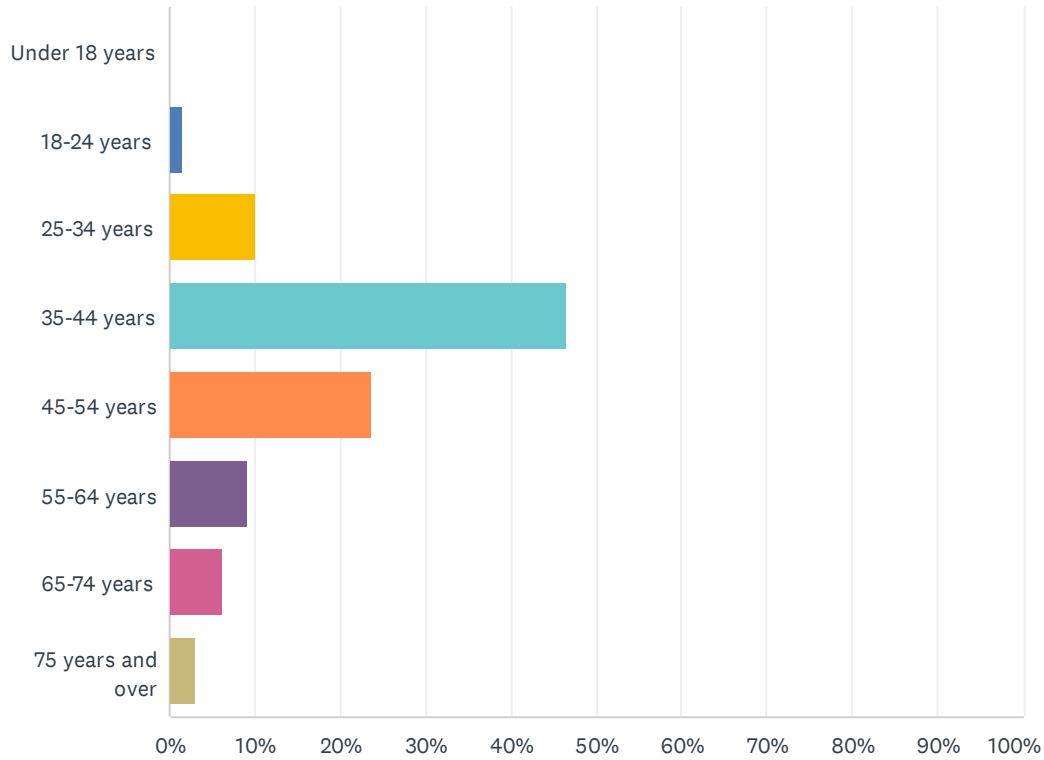
Village of Clinton Parks & Recreation Survey 2021



	1	2	3	4	5	5+	TOTAL
Between 0-5 years	56.52% 26	28.26% 13	10.87% 5	0.00% 0	0.00% 0	4.35% 2	46
Between 6-12 years	65.71% 46	24.29% 17	4.29% 3	4.29% 3	1.43% 1	0.00% 0	70
Between 13-17 years	63.46% 33	25.00% 13	9.62% 5	1.92% 1	0.00% 0	0.00% 0	52
Between 18-24 years	72.73% 16	27.27% 6	0.00% 0	0.00% 0	0.00% 0	0.00% 0	22
Between 25-34 years	63.64% 14	36.36% 8	0.00% 0	0.00% 0	0.00% 0	0.00% 0	22
Between 35-44 years	33.33% 25	66.67% 50	0.00% 0	0.00% 0	0.00% 0	0.00% 0	75
Between 45-54 years	48.65% 18	51.35% 19	0.00% 0	0.00% 0	0.00% 0	0.00% 0	37
Between 55-64 years	38.46% 5	61.54% 8	0.00% 0	0.00% 0	0.00% 0	0.00% 0	13
Between 65-74 years	60.00% 9	40.00% 6	0.00% 0	0.00% 0	0.00% 0	0.00% 0	15
75 years and older	83.33% 5	16.67% 1	0.00% 0	0.00% 0	0.00% 0	0.00% 0	6

Q17 What is your age?

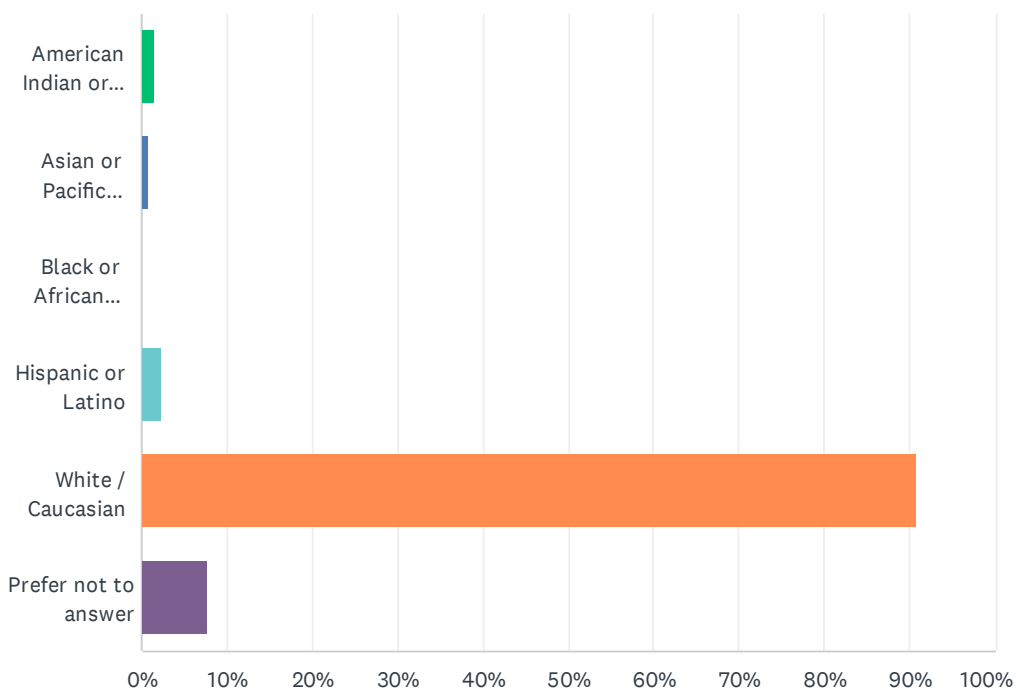
Answered: 131 Skipped: 31



ANSWER CHOICES	RESPONSES	
Under 18 years	0.00%	0
18-24 years	1.53%	2
25-34 years	9.92%	13
35-44 years	46.56%	61
45-54 years	23.66%	31
55-64 years	9.16%	12
65-74 years	6.11%	8
75 years and over	3.05%	4
TOTAL		131

Q18 What is your ethnicity? (Please select all that apply.)

Answered: 131 Skipped: 31



ANSWER CHOICES	RESPONSES	
American Indian or Alaskan Native	1.53%	2
Asian or Pacific Islander	0.76%	1
Black or African American	0.00%	0
Hispanic or Latino	2.29%	3
White / Caucasian	90.84%	119
Prefer not to answer	7.63%	10
Total Respondents: 131		

#	OTHER (PLEASE SPECIFY)	DATE
	There are no responses.	

Q19 Do you have any additional comments that you would like to offer?

Answered: 44 Skipped: 118

#	RESPONSES	DATE
1	I have also enjoyed the library activities at the park. I hope someone is making a CONSCIOUS and DILIGENT effort to contact the young people and ask for their ideas. Work with CHS and CMS student government. I also hope the info about this survey is more widely publicized, rather than buried in a tiny article in the Telegram!	9/2/2021 11:13 AM
2	Branches need trimmed on paths.	8/30/2021 9:57 PM
3	Would like to see bike paths and splash pads.	8/29/2021 7:22 PM
4	Nicer restrooms would be appreciated.	8/28/2021 6:29 PM
5	Just a big Thank You to our Village People for doing a great job with upkeep and grounds maintenance. Oh, wait just thought of something. A Movie in the Park kinda thing would be cool.	8/28/2021 5:04 PM
6	It has been a joy to see lots of people in the park walking and kids playing on the playground.	8/28/2021 4:05 PM
7	We wish that we could start the process of actually connecting lenawee with a bike path. Tecumseh is now extending to Cal Zorn, if we could work out to join a new path to the Kiwanis trail and actually connect Tate park or the village of Clinton to Adrian, it would be amazing! A longer bike trail would get much use and be so much safer than travel on the road. Thank you!	8/27/2021 10:16 AM
8	We would like to see a walking and biking path that makes a complete circle with mile markers.	8/26/2021 8:29 PM
9	Tate Park is under utilized. Outdoor music, winter sledding, cross country skiing lessons, nature walks, photography lessons, star gazing, card tournaments, cooking demonstrations, the list goes on and on. Residents should want to look at a community calendar to see what's going on in Clinton for fun for ALL ages.	8/26/2021 11:48 AM
10	No	8/26/2021 9:18 AM
11	Splash pad would be a great idea!	8/26/2021 7:59 AM
12	We come to Clinton for downtown events as much as we do to go to Tate Park, but Tate Park is such a great place to host or include events and it's walkable to downtown that it's just great.	8/26/2021 7:55 AM
13	Would like to see the baseball/softball fields updated. Lights for one or two fields would be nice. The dugouts, infield, and outfield need to be updated. Drainage seems to be an issue with the fields and needs to be updated/fixed. The baseball/softball fields are heavily used and have not been updated in the 7 years I have lived here.	8/26/2021 6:56 AM
14	David Pope does one heck of a job keeping Tate park in great shape. Thank you Dave.	8/26/2021 6:50 AM
15	A dog park would be nice.	8/26/2021 12:14 AM
16	Get rid of the sandbox it is disgusting. Would love more shade options around the playground area.	8/25/2021 10:19 PM
17	Parking needs upgrade , lighting for fields	8/25/2021 10:17 PM
18	The drive around the park needs maintenance. Replace the asphalt.	8/25/2021 9:40 PM
19	Add basketball court to tate park	8/25/2021 9:20 PM
20	Tate Park is really the only park we use. It's great! Bathrooms are kept in good order, the walking paths are really nicely maintained (we spend a lot of time there for baseball), my boys learned to fish there on the river, we've had many play dates there over the years (at the playground equipment) and countless other events in the pavilions. It's a great park. Oh also, I	8/25/2021 9:14 PM

Village of Clinton Parks & Recreation Survey 2021

appreciate that the police roll thru there often!!!! Thank you all for keep Clinton a great place to raise a family.

21	One thing I would like to change is the spraying of the grass. Those chemicals and weed killers have been proven to cause a number of health issues	8/25/2021 9:13 PM
22	Update softball fields, offer more adult sports	8/25/2021 9:11 PM
23	Thank you for your hard work. We are at the parks a lot more during soccer season, but we still come for the playground. Also the sandbox is a big hit with the kids	8/25/2021 8:59 PM
24	Love the parks. Happy to see additions to gate park, such as the volleyball courts. Splash pad would be wonderful. Larger sand box with equipment.	8/25/2021 8:51 PM
25	Gary young and Dave Pope do a fantastic job taking care of the park.	8/25/2021 8:50 PM
26	Work with village to connect a bike trail to Tecumseh. Cycling could be a great draw for the community.	8/25/2021 8:39 PM
27	No	8/25/2021 8:34 PM
28	Would love to see the roads paved	8/25/2021 8:30 PM
29	We need a splash pad or other water feature for play. Look at St. Joseph MI for ideas	8/25/2021 8:28 PM
30	I would love to see a boundless playground, more social community events, and water activities	8/25/2021 8:21 PM
31	No	8/25/2021 8:06 PM
32	I think the village maintains our parks well. But we are a growing community that needs to expand and accommodate everyone	8/25/2021 7:59 PM
33	Splash Pad would be awesome.	8/25/2021 7:53 PM
34	We love the Village of Clinton and the fact that this survey is being sent out and you care about what your residents think and are trying to make improvements proves how great this little town is.	8/25/2021 7:48 PM
35	I think a splash pad for kids would be a great addition....we love taking my sisters kids to the one in Tecumseh and now they have one in Milan as well	8/25/2021 7:47 PM
36	It would be awesome to have a splash pad for the little kids.	8/25/2021 7:35 PM
37	Would like to see a splash pad for the kids.	8/25/2021 7:33 PM
38	What does our race have to do with parks	8/25/2021 7:26 PM
39	Splash pad!	8/25/2021 7:21 PM
40	Add Football field, pickle ball court. Improve and create more trails. Splash pad for the children in Clinton. Like Tecumseh.	8/25/2021 7:21 PM
41	Better parking areas	8/25/2021 7:18 PM
42	Tate park is fantastic. Overall suggestions for improvement include splash pad, amphitheater, cross walk to frosty Joey, canoe/kayak launch, outdoor basketball courts	8/25/2021 7:16 PM
43	The safety and cleaning of the nature trails in the island should be a priority.	8/25/2021 7:12 PM
44	A community pool would be great	8/25/2021 7:11 PM

Village of Clinton Parks & Recreation Committee Motion of Support

Village of Clinton
Park Committee Meeting Minutes
December 15, 2021

Meeting called to order at 7:00 pm by Chairman Sines.

Members present included Chairman Larry Sines, Carl Habrick and Bonnie Peters. Guests included George Service, Dave Pope, Gary Young and Kevin Cornish.

The Park Committee discussed the suggestions from the park survey comments. It reviewed the current Project Prioritization List from the existing Park Master Plan.

The Park Committee discussed what items to include on the proposed Project Prioritization List for the 2022-26 Park Master Plan. The Committee then placed those projects into high, medium and low priorities.

The Park Committee discussed some amendments to the Park Master Plan Goals and Objectives.

The Park Committee's recommended Park Project Prioritization List will be presented to Council for further discussion at the January 5, 2022 Council meeting. A public hearing will be held January 17, 2022.

The meeting adjourned at 8:50 pm

Kevin Cornish
Kevin Cornish, Village Manager

1/24/22
Date

Notice of Draft Plan for 30 Days of Public Comment and Public Hearing



Michael J. Walters
Owner, Publisher, Editor
517-456-4100
Editor@TheClintonLocal.com

"The only newspaper in the world that cares about Clinton!"

January 24, 2022

To Whom It May Concern:

On December 9, 2021 and again on January 6, 2022, the Clinton Local newspaper published a public notice from the Village of Clinton concerning the Village of Clinton Community Recreation Plan 2022-2026, as follows:

**VILLAGE OF CLINTON
PUBLIC NOTICE**

Community Recreation Plan Review and Public Hearing

The Village of Clinton Community Recreation Plan 2022-26 is developed to focus on recreational needs and how to address them over the next five years and beyond, and replace the previous plan which was dated 2011-15. The process includes community input through a public electronic park survey back in September 2021, a 30-day draft plan review, and a final public hearing.

Now that the draft plan is complete, the Village is offering the public the opportunity to review and comment on the plan prior to adoption. To provide comments on the plan, please send an email to info@villageofclinton.org or call 517-456-7494 extension 1214.

30-DAY PUBLIC COMMENT PERIOD

A 30-day public comment period of the Village of Clinton Community Recreation Plan 2022-26 will be open through January 14, 2022. The draft plan is available on our website at <https://www.villageofclinton.org/government/ordinances-plans/village-plans/send/15-village-plans/635-draft-community-recreation-plan-2022-26> or may be reviewed in person at Village of Clinton, 119 E. Michigan Avenue, Clinton, MI 49236, during regular office hours.

JANUARY 17, 2022, PUBLIC HEARING

The Clinton Village Council will hold a public hearing on January 17, 2022, at 7:00 pm, in the Clinton Village Office, 119 E. Michigan Avenue, Clinton, Michigan, 49236, (517) 456-7494. The Village will post a zoom option for the hearing on our website prior to the meeting. Comments may be emailed or called in prior to the meeting. Individuals needing special accommodations should contact the Village Office three business days before the hearing. The purpose of the hearing is to receive public comments on the proposed Clinton Community Recreation Plan 2022-26. Following the public hearing Council will take action to amend and/or adopt the Plan.

Kevin Cornish
Village Manager

Sincerely,

Michael J. Walters,
Publisher and Editor
The Clinton Local LLC

Call 517-456-4100

CLASSIFIED ADS

order online:

www.theclintonlocal.com

CLASSIFIED AND EVENTS DEADLINE: TUESDAY BY 1 P.M.

Birthday or anniversary wishes with photo/Thank You notes - now just \$10 in the classified section.

FRESH TURKEYS

for
Christmas & New Years.
Delicious!
Chemical-free!
Also turkey breast
roasts, thigh roasts, and
turkey hams

Call 517-403-3854
1230



H+W

\$ for junk vehicles
Free Towing
7 Days
734-223-5581
0120

BUY LOCAL

Weekly SUDOKU

by Linda Thistle

3				5			6
	8			7		1	9
		7	2				4
		9	3				2
	3			7			1
5	6		1		4		
		2	7		5		
9			1	6		3	
	6			4			8

Place a number in the empty boxes in such a way that each row across, each column down and each small 9-box square contains all the numbers from one to nine.

DIFFICULTY THIS WEEK: ♦♦

♦ Moderate ♦♦ Challenging
♦♦♦ HOO BOY!

© 2021 King Features Synd., Inc.

VILLAGE OF CLINTON
PUBLIC NOTICE

Community Recreation Plan Review and Public Hearing

The Village of Clinton Community Recreation Plan 2022-26 is developed to focus on recreational needs and how to address them over the next five years and beyond, and replace the previous plan which was dated 2011-15. The process includes community input through a public electronic park survey back in September 2021, a 30-day draft plan review, and a final public hearing.

Now that the draft plan is complete, the Village is offering the public the opportunity to review and comment on the plan prior to adoption. To provide comments on the plan, please send an email to info@villageofclinton.org or call 517-456-7494 extension 1214.

30-DAY PUBLIC COMMENT PERIOD

A 30-day public comment period of the Village of Clinton Community Recreation Plan 2022-26 will be open through January 14, 2022. The draft plan is available on our website at <https://www.villageofclinton.org/government/ordinances-plans/village-plans/send/15-village-plans/635-draft-community-recreation-plan-2022-26> or may be reviewed in person at Village of Clinton, 119 E. Michigan Avenue, Clinton, MI 49236, during regular office hours.

JANUARY 17, 2022, PUBLIC HEARING

The Clinton Village Council will hold a public hearing on January 17, 2022, at 7:00 pm, in the Clinton Village Office, 119 E. Michigan Avenue, Clinton, Michigan, 49236, (517) 456-7494. The Village will post a zoom option for the hearing on our website prior to the meeting. Comments may be emailed or called in prior to the meeting. Individuals needing special accommodations should contact the Village Office three business days before the hearing. The purpose of the hearing is to receive public comments on the proposed Clinton Community Recreation Plan 2022-26. Following the public hearing Council will take action to amend and/or adopt the Plan.

Kevin Cornish
Village Manager

MOMENTS IN TIME

The History Channel

- * On Dec. 25, 1776, Gen. George Washington crosses the Delaware River with 5,400 Patriot troops, hoping to surprise a Hessian force celebrating Christmas at their winter quarters in Trenton, New Jersey. Washington's men quickly overwhelmed the German defenders, who were groggy from the previous evening's festivities, and by morning the town was surrounded.
- * On Dec. 21, 1891, James Naismith introduces the game of basketball as an activity for bored and unruly students during difficult New England winters. Based on rules he created, the game was tested by 18 students at the International Young Men's Christian Association Training School in Massachusetts.
- * On Dec. 22, 1956, a baby gorilla enters the world at the Columbus Zoo in Ohio, becoming the first gorilla born in captivity. Colo went on to become a mother, grandmother and a great-grandmother to Timu, the first surviving infant gorilla conceived by artificial insemination. Colo died in 2017 at the age of 60.
- * On Dec. 26, 1966, Jimi Hendrix writes the lyrics to "Purple Haze," the song that would give him his breakthrough hit. Rolling Stone magazine would later name "Purple Haze" one of the 100 Greatest Guitar Songs of All Time.
- * On Dec. 24, 1979, the Soviet Union invades Afghanistan under the pretext of upholding the Soviet-Afghan Friendship Treaty of 1978. Despite fierce resistance from the Afghan army, it took the Soviets only a few days to secure the capital of Kabul.

(c) 2021 Hearst Communications, Inc. All Rights Reserved.

Even Exchange by Donna Pettman

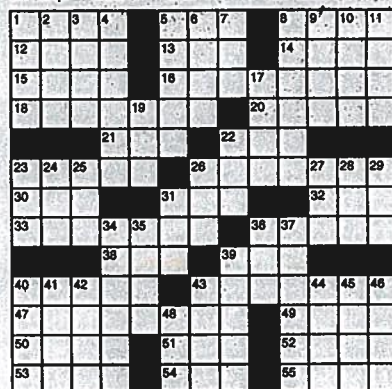
Each numbered row contains two clues and two 6-letter answers. The two answers differ from each other by only one letter, which has already been inserted. For example, if you exchange the A from MASTER for an I, you get MISTER. Do not change the order of the letters.

- | | | | |
|----------------------------|-----------|----------------------|-----------|
| 1. Wave's high point | ___ S ___ | Sneaked around | ___ P ___ |
| 2. Bower of trees | ___ B ___ | Enthusiasm | ___ D ___ |
| 3. Highly intelligent | ___ I ___ | Muscular | ___ W ___ |
| 4. Screech loudly | ___ C ___ | Small river | ___ T ___ |
| 5. School level | ___ D ___ | Shred, like cheese | ___ T ___ |
| 6. Defeated one | ___ S ___ | Recluse | ___ N ___ |
| 7. General layout | ___ T ___ | Prom dress | ___ L ___ |
| 8. Traveler's inn | ___ O ___ | Mantel piece | ___ E ___ |
| 9. Gold medalist, e.g. | ___ N ___ | Frosty's season | ___ T ___ |
| 10. Be the first to create | ___ N ___ | Buy stocks and bonds | ___ S ___ |

©2021 King Features Synd., Inc.

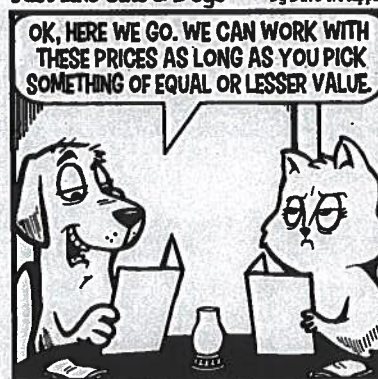
King Crossword

- | | | |
|--------------------|-------------------|---------------------|
| ACROSS | 39 "— voyage!" | 17 Carton sealer |
| 1 Alum | 40 Skater Ohno | 19 Nay under |
| 5 Spell-off | 43 Within earshot | 22 Motorist's org. |
| 8 Pit | 47 Oater setting | 23 Upscale auto |
| 12 Taylor of | 49 Author Bellow | 24 Shad product |
| "Mystic Pizza" | 50 Within (Pref.) | 25 Egos' counter- |
| 13 Approves | 51 "Shool" | parts |
| 14 Satan's forte | 52 Exile isle | 26 Jo's sister |
| 15 Leading man? | 53 Beheld | 27 Brit. record |
| 18 Landlocked | 54 Sugary suffix | label |
| Mideast territo- | 55 Marvel super- | 28 Fa follower |
| ry | heroes | 29 Youngster |
| 18 Disney's Ariel, | | 31 Links org. |
| for one | DOWN | 34 Rattled out |
| 20 Van Gogh | 1 Glitz partner | 35 Sufficient, old- |
| venue | 2 Carousel, for | style |
| 21 CBS logo | one | 36 Delty |
| 22 Mimic | 3 Winged | 37 Gender-neutral |
| 23 Wedding VIP | 4 Darkened | 39 Montana city |
| 26 "I'm No Angel" | 5 "Let's Dance" | 40 Dazzles |
| actress | singer | 41 Freshener |
| 30 '60s chic | 6 Scratched (out) | scent |
| 31 Green shade | 7 Curved letter | 42 Shoppe |
| 32 Cattle call | 8 Semitic lan- | description |
| 33 "The Great | 9 Cameo shape | 43 Unrepaired |
| Gatsby" set- | 10 Queue | 44 Lip soother |
| ting | 11 BPOE mem- | 45 Garage job |
| 36 Self-reproach | bers | 46 Panache |
| 38 Stop — dime | | 48 Conceit |

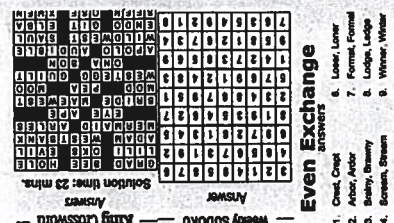


Just Like Cats & Dogs

by Dave T. Phillips



PUZZLE ANSWERS



Thank You for shopping and
buying LOCAL!

Call 517-456-4100

CLASSIFIED ADS

order online:
www.theclintonlocal.com

CLASSIFIED AND EVENTS DEADLINE: TUESDAY BY 4 P.M.

Birthday or anniversary wishes with photo/Thank You notes and Announcements—now just \$10 in the classified section.

HELP WANTED

The Lenawee ISD is accepting applications for the following vacancies:

- Before/After School Child Care
- Bus Assistant
- Bus Driver
- Early Childhood Special Education Teacher
- Educational Consultant
- Health Care Assistant
- Job Coach
- Paraprofessional
- Physical Therapy Assistant
- School Media/Health Professional
- School Psychologist
- Secretary/Staff Resource & Facilities
- Sign Language Interpreters
- Special Education Supervisor
- Speech Language Pathologists
- Teacher/Group Special Education Teacher

Please visit the Lenawee ISD website at www.lisd.us for more information. Background checks will be conducted. EOE M/F



H+W
\$ for junk vehicles
Free Towing
7 Days
734-223-5581
0120

2022 Annual Rates for Subscriptions

In County
\$39

Outside Lenawee in MI
\$42

Outside Lenawee + MI
\$45

Digital Only
\$30

Hardship?
Call
517-456-4100

VILLAGE OF CLINTON PUBLIC NOTICE

Community Recreation Plan Review and Public Hearing

The Village of Clinton Community Recreation Plan 2022-26 is developed to focus on recreational needs and how to address them over the next five years and beyond, and replace the previous plan which was dated 2011-15. The process includes community input through a public electronic park survey back in September 2021, a 30-day draft plan review, and a final public hearing.

Now that the draft plan is complete, the Village is offering the public the opportunity to review and comment on the plan prior to adoption. To provide comments on the plan, please send an email to info@villageofclinton.org or call 517-456-7494 extension 1214.

30-DAY PUBLIC COMMENT PERIOD

A 30-day public comment period of the Village of Clinton Community Recreation Plan 2022-26 will be open through January 14, 2022. The draft plan is available on our website at <https://www.villageofclinton.org/government/ordinances-plans/village-plans/send/15-village-plans/635-draft-community-recreation-plan-2022-26> or may be reviewed in person at Village of Clinton, 119 E. Michigan Avenue, Clinton, MI 49236, during regular office hours.

JANUARY 17, 2022, PUBLIC HEARING

The Clinton Village Council will hold a public hearing on January 17, 2022, at 7:00 pm, in the Clinton Village Office, 119 E. Michigan Avenue, Clinton, Michigan, 49236, (517) 456-7494. The Village will post a zoom option for the hearing on our website prior to the meeting. Comments may be emailed or called in prior to the meeting. Individuals needing special accommodations should contact the Village Office three business days before the hearing. The purpose of the hearing is to receive public comments on the proposed Clinton Community Recreation Plan 2022-26. Following the public hearing Council will take action to amend and/or adopt the Plan.

Kevin Cornish
Village Manager

CLASSIFIED RATES

Under 20 words = \$7
Under 50 words = \$10
Under 100 words = \$15
(THIRD WEEK FREE!)

Deadline is Tuesday by 4 p.m.

Call: 517-456-4100 or order online

at

www.theclintonlocal.com

Email:

editor@theclintonlocal.com



Amber Waves

by Dave T. Phipps



1. GEOGRAPHY: Which Russian city used to be called Leningrad?
2. SCIENCE: What is the coldest city in the northern hemisphere?
3. LANGUAGE: What does the Latin phrase "persona non grata" mean?
4. U.S. STATES: Which state's flag is the only one currently that is two-sided?
5. GENERAL KNOWLEDGE: What was the first animal to appear on a U.S. coin?
6. FOOD & DRINK: How many herbs and spices are in the original recipe of Kentucky Fried Chicken?
7. MOVIES: How many movies did Ginger Rogers and Fred Astaire make together?
8. LITERARY: In the Harry Potter book series, what are N.E.W.T.s?
9. TELEVISION: How many children were in "The Addams Family" sitcom?
10. HISTORY: In what year was the first email sent?

Answers
1. St. Petersburg
2. Oymyakon, Russia
3. An unwellcome person (Nasty Exhausting Wizarding Test)
4. Oregon (state seal on one side and a figure of a beaver on the other side)
5. An eagle
6. Pugsley
7. 10, 1971
8. Two: Wednesday and Thursday (Tuesdays with Mr. Wizard)

Even Exchange by Donna Pettman

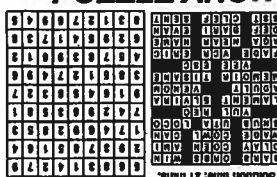
Each numbered row contains two clues and two 6-letter answers. The two answers differ from each other by only one letter, which has already been inserted. For example, if you exchange the A from MASTER for an I, you get MISTER. Do not change the order of the letters.

- | | | | |
|------------------------|-----------|------------------------|-----------|
| 1. Acrid to taste | — I — — — | Toast topping | — U — — — |
| 2. Pearl gatherer | — V — — — | Eatery | — N — — — |
| 3. Compose | — R — — — | Vanna or Betty | — H — — — |
| 4. Physical well-being | — L — — — | Fireplace | — R — — — |
| 5. Subsequent | — F — — — | Star-shaped flower | — S — — — |
| 6. More secure | — F — — — | Calvary sword | — B — — — |
| 7. Trumpet's cousin | — T — — — | Hollywood & Vine, e.g. | — R — — — |
| 8. Convenient | — N — — — | Robust | — R — — — |
| 9. Finn's buddy | S — — — | Perry Mason's job | L — — — |
| 10. Combine | — E — — — | Mrs. Simpson | A — — — |

©2022 King Features Synd., Inc.

(c) 2022 King Features Synd., Inc.

PUZZLE ANSWERS



Even Exchange answers

1. Butter, Butter
2. Diner, Diner
3. White, White
4. Health, Health
5. After, After
6. Suffer, Suffer
7. Comet, Comet
8. Henry, Henry
9. George, George
10. Merge, Merge

CASABLANCA
REAL ESTATE

DAN JURASEK
734-222-1010 or 517-605-5704
Dan@CrocRealtors.com
4997 Ann Arbor Saline Rd.
Ann Arbor, MI 48103
www.CasablancaRealEstate.com

ASHLEY'S
BODY SHOP

William, Frank, Jr.
517-456-1868 Fax 517-456-1868
1905 West Michigan Ave., Clinton, MI 49236
www.ashleysbodyshop.com

Minutes of Public Hearing and Village Council Meeting

Village of Clinton
Council Minutes
January 24, 2022

The meeting opened at 7:00 pm.

Members Present were President Doris Kemner, Carl Habrick, Larry Sines, Joe Orban, Bonnie Peters, Greg Michalak, and Kevin Kelly (via Zoom).

The Village held a public hearing on January 17, 2022, to receive public comments on the proposed Community Recreation Plan. Because of covid protocol, the meeting had to be held remotely. In order to adopt the Village's Community Recreation Plan, a special meeting was called for January 24, 2022, to meet in-person in the Village Office Parking lot.

Motion was made by Sines and seconded by Habrick to adopt Resolution Number 2022-02, a resolution to adopt the Village of Clinton's Community Recreation Plan 2022-26. Motion carried unanimously.

Motion was made by Sines and seconded by Habrick to adjourn. Motion carried unanimously.

Meeting adjourned at 7:07 pm.

Kevin Cornish, Village Manager

Date

Adoption of Plan

Village of Clinton
RESOLUTION NUMBER 2022-02

A RESOLUTION TO ADOPT THE VILLAGE OF CLINTON'S COMMUNITY
RECREATION PLAN 2022-26

WHEREAS, the Village of Clinton has undertaken a planning process to determine the recreation and natural resource conservation needs and desires of its residents during a five-year period covering the years 2022 through 2026; and,

WHEREAS, the Village of Clinton began the process of developing a community recreation plan in accordance with the most recent guidelines developed by the Department of Natural Resources and made available to local communities; and,

WHEREAS, residents of the Village of Clinton were provided with a well-advertised opportunity during the development of the draft plan to express opinions, ask questions and discuss all aspects of the recreation plan; and,

WHEREAS, the public was given a well-advertised opportunity and reasonable accommodations to review the final draft plan for a period of at least 30 days; and,

WHEREAS, a public hearing was held on January 17, 2022 at the Village Office, 119 E. Michigan Avenue, Clinton, MI, 49236, to provide for all residents of the area to express their opinions in person or remotely, to ask questions, and discuss all aspects of the *Village of Clinton, Community Recreation Plan, 2022-2026*; and,

WHEREAS, the Village of Clinton has developed the plan as a guideline for improving recreation and enhancing natural resource conservation for the Village of Clinton; and,

WHEREAS, after the public hearing, the Clinton Village Council voted to adopt said *Village of Clinton Community Recreation Plan 2022-26*.

NOW, THEREFORE BE IT RESOLVED the Village of Clinton Village Council hereby adopts the *Village of Clinton, Community Recreation Plan, 2022-26*.



Doris Kemner, President



Date



Jennifer Adams, Village Clerk



Date

Transmittal Letters to Lenawee County and Region II Planning Commission

Village *of* *Clinton*

SERVING CLINTON SINCE 1829

January 31, 2022

Mr. Martin Marshall
County Administrator
Lenawee County
301 N. Main St.
Adrian, MI 49221

RE: Electronic Transfer
Village of Clinton Community Recreation Plan 2022-2026

Dear Mr. Marshall,

Please find included with this electronic transfer to your office the new Community Recreation Plan 2022-26 for the Village of Clinton. This plan is being submitted to the Michigan Department of Natural Resources for future recreation planning and grant consideration. If you have any questions or comments regarding the document, please do not hesitate to contact myself.

The Michigan Department of Natural Resources requests that the Grants Management Section be copied on any comments developed by the County. These comments would be forwarded to Grants Management Section, Department of Natural Resources, PO Box 30425, Lansing, MI 48909-7925.

Sincerely,



Kevin Cornish
Village Manager

Village *of* Clinton

SERVING CLINTON SINCE 1829

January 31, 2022

Mr. Grant Bauman
Region II Planning Commission
Jackson County Tower Building, 9th Floor
120 W. Michigan Ave.
Jackson, MI 49201

RE: Village of Clinton
Community Recreation Plan 2011-2015

Dear Mr. Bauman,

Please find included with this electronic transfer to your office the new Community Recreation Plan 2022-26 for the Village of Clinton. This plan is being submitted to the Michigan Department of Natural Resources for future recreation planning and grant consideration. If you have any questions or comments regarding the document, please do not hesitate to contact myself.

The Michigan Department of Natural Resources requests that the Grants Management Section be copied on any comments developed by your office. These comments would be forwarded to Grants Management Section, Department of Natural Resources, PO Box 30425, Lansing, MI 48909-7925.

Sincerely,



Kevin Cornish
Village Manager

END OF PLAN DOCUMENT