

# Lenawee County 2021 Traffic Summit



**Lenawee County  
Road Commission**

**City of  
Tecumseh**

# **MDOT University Region Contact Information**

## **Jackson Transportation Service Center (JTSC)**

2750 N. Elm Rd  
Jackson, MI 49201  
(517) 780-7540

Kelby Wallace, P.E. – Manager  
Sam Sorensen, P.E. – Delivery Engineer  
Jason Pittman, P.E. – Cost and Scheduling Engineer  
Jason Fossitt, P.E. – Operations Engineer  
Chris Kendrick – Adrian Garage Supervisor  
Scott Geiger – Transportation Maintenance Coordinator  
Doug Jordan – Permits Agent  
Roslyn Hagood – Traffic and Safety Engineer

**Serving Hillsdale, Jackson, and Lenawee  
Counties**

## **University Region Office**

4701 W. Michigan Avenue  
Jackson, MI 49201  
(517) 750-0401

Dee Parker, P.E. – Region Engineer  
  
Erin Chelotti, P.E. – Associate Region Engineer of  
Development  
  
Steve Palmer, P.E. – Associate Region Engineer of  
Delivery

**Serving Clinton, Eaton, Hillsdale,  
Ingham, Jackson, Lenawee, Livingston,  
Monroe, and Washtenaw Counties**

# Agenda

## **Lenawee County Traffic Summit –Virtual November 5, 2020, 1:00 p.m.**

- I. Welcome
  - **Kelby Wallace**, TSC Manager
    - Introductions
    - Purpose of Meeting
  - **Jason Fossitt**, TSC Operations Engineer
    - “Toward Zero Deaths” (TZD) Update
- II. Review of MDOT Construction Projects
  - **Joe VanPoppel**, TSC Assistant Delivery Engineer
    - MDOT 2020 Projects
    - Email updates
  - **Jason Pittman**, TSC Cost & Scheduling Engineer
    - MDOT 2021-2022 Projects
- III. Review of Lenawee County Road Commission Construction Projects
  - LCRC 2020-2021 Projects
- IV. Review of City of Adrian Construction Projects
  - Adrian 2020-2021 Projects
- V. Review of City of Tecumseh Construction Projects
  - Tecumseh 2020-2021 Projects
- VI. Other Local Agencies
- VII. Region 2 Planning Commission Update
- VIII. Open Discussion

# SAFETY FACT SHEET



Together, We Are Moving Michigan

## What is Toward Zero Deaths?

Toward Zero Deaths (TZD) is a statewide safety campaign based on the national strategy on highway safety intended to influence driver behavior and improve safety. With more than 37,000 fatalities occurring on U.S. highways each year, roadway safety remains one of the most challenging issues facing Michigan, and the nation.

In 2019, one person was killed in a crash every 8 hours, 54 minutes.

In 2019, most fatal crashes occurred on dry roadways (72.8 percent) and in clear weather conditions (61.8 percent).

In 2019, one person was killed in an alcohol involved crash every 1 day, 5 hours, 42 minutes.

In 2019, one driver under age 21 was in a fatal crash every 2 days, 20 hours, 59 minutes.

71.8 percent of pedestrians killed in 2019 were male, most pedestrian crashes occur between 6 and 7 p.m., and Friday is the deadliest day of the week for pedestrians.

In 2019, pedestrians crossing in areas other than intersections accounted for 34.2 percent of pedestrian fatalities.

In 2019, 71.5 percent of drinking drivers involved in crashes were male, most fatal had been drinking (HBD) crashes occur between 10 and 11 pm, and Saturday has the highest number of HBD fatal crashes.

Single-lane roundabouts in Michigan not only reduce fatal and incapacitating crashes by 88 percent, but they also provide an economic benefit of almost \$600,000 per year per roundabout, based on crash reduction and user cost delay.



Crashes on curved roadways account for more than 27 percent of all traffic deaths every year. In an effort to reduce crashes on curved roadways, road agencies install a variety of countermeasures to keep your vehicle on the road.



**Centerline Rumble Strips**  
55 percent reduction in lane departure



**Curve Delineation**  
Reduction in crashes by 20 percent



**Speed Warning Systems**  
Almost 50 percent reduction in crashes



**High-Friction Surfaces**  
35 percent fewer wet roadway crashes

## What can you do to help move Michigan Toward Zero Deaths?



### **Pedestrians**

- Whenever possible, cross at a signal
- Make eye contact with the driver whenever possible
- Walk on the sidewalk whenever possible, and against traffic if a sidewalk is not available



### **Motorcyclists**

- Wear protective high-visibility gear, including a helmet
- Get endorsed
- Take a safety training class
- Don't drink and ride



### **Drivers**

- Check all seats for kids when exiting a vehicle
- Put your phone out of reach and turn the sound off
- Don't drink and drive
- Always wear your seatbelt
- Don't drive in a semi's blind spots
- Watch for pedestrians, bicyclists, and motorcyclists



### **Bicyclists**

- Wear your helmet and bright clothing
- Ride with traffic
- Don't drink and ride
- Use hand signals

A 2019 observational seatbelt survey estimates statewide belt use at 94.4 percent.

A 2017 observational survey estimated statewide helmet use at 71.4 percent and high-visibility gear at 3.6 percent.

Be a champion in supporting TZD and the safety culture in Michigan.

Go to: [www.towardzerodeaths.org](http://www.towardzerodeaths.org) to become a TZD participant

To learn more about Michigan's efforts, go to:

**[www.Michigan.gov/ZeroDeaths](http://www.Michigan.gov/ZeroDeaths)**

Together we are  
**Moving Michigan**



**Toward Zero Deaths™**  
National Strategy on Highway Safety

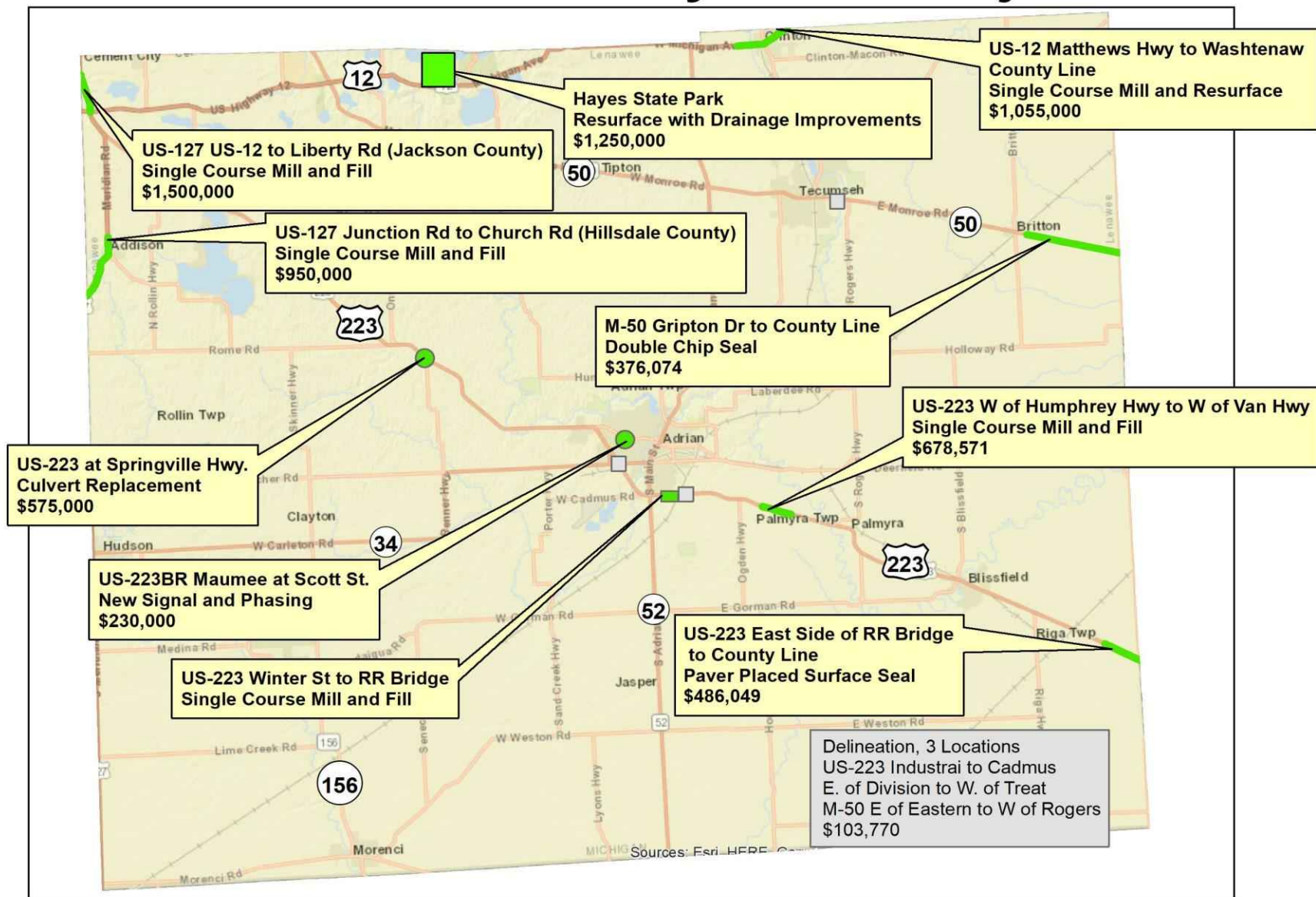


A faint, light blue map of the state of Maryland is visible in the background, centered behind the text.

# MDOT 2020 Projects



# 2020 Lenawee County MDOT Projects

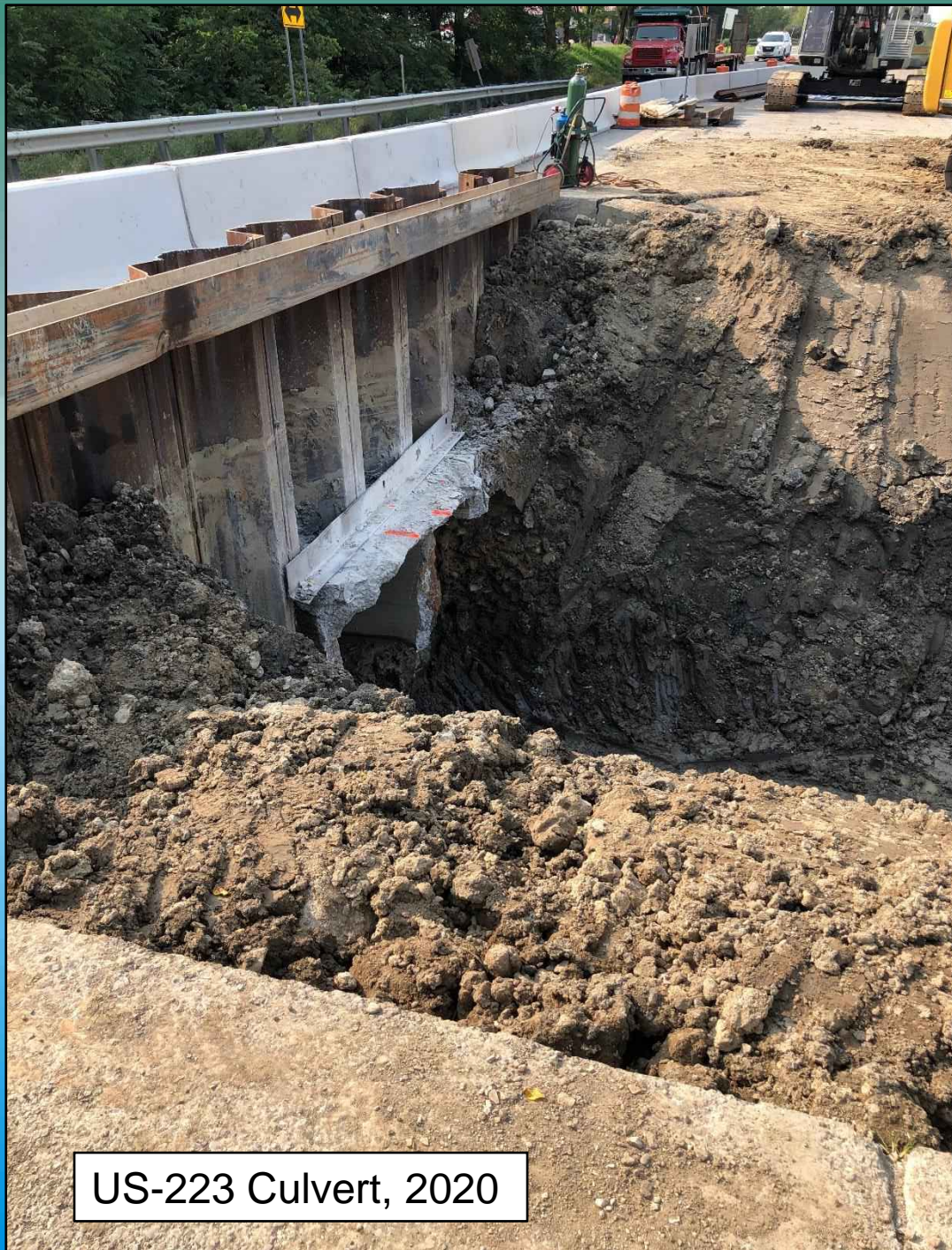


0 2 4 8 Miles

— 2020 MDOT Projects







US-223 Culvert, 2020





US-223 Culvert, 2020





US-223 Culvert, 2020





US-223 Culvert, 2020





US-223 Mill and Resurface, 2020



## US-223 Mill and Resurface, 2020





US-223 Mill & Resurface, 2020



[www.Michigan.gov/mdot](http://www.Michigan.gov/mdot)

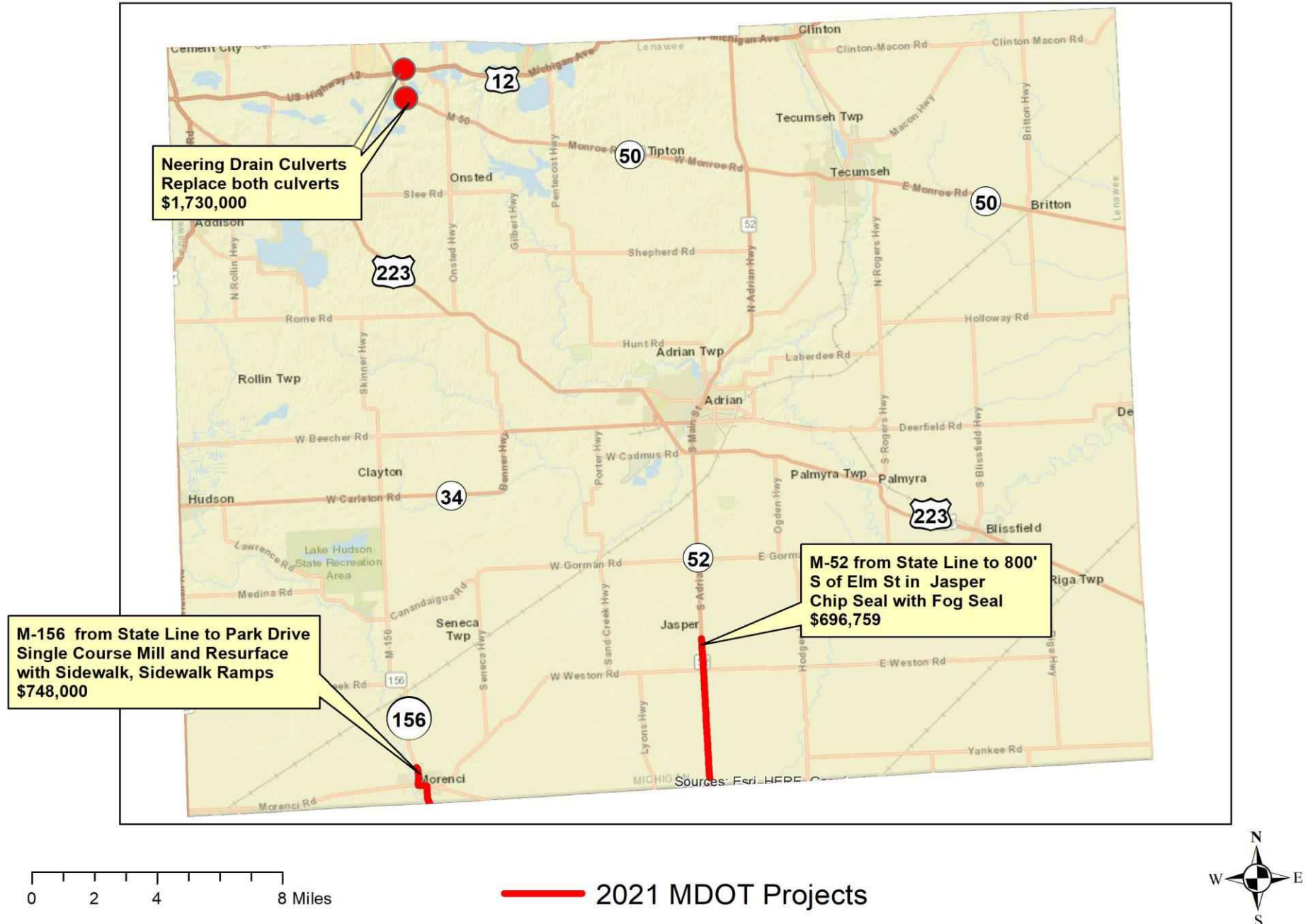


A faint, light blue map of the state of Maryland is visible in the background, centered behind the text.

# MDOT 2021-2022 Projects



# 2021 Lenawee County MDOT Projects



# 2022 Lenawee County MDOT Work



0 2 4 8 Miles

— 2022 Projects



# 2022 Lenawee County Sign Upgrades

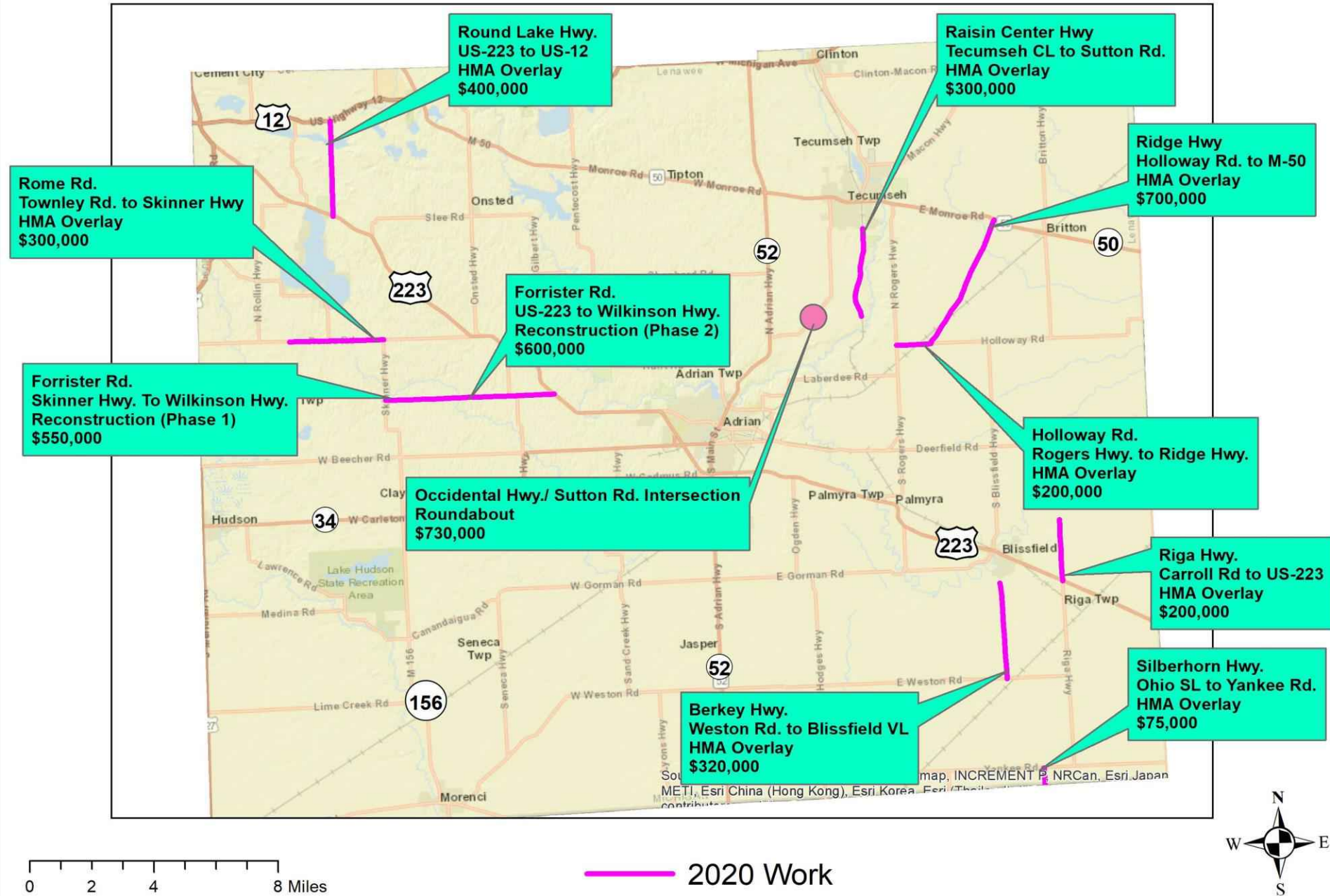


A faint, light blue world map is visible in the background, centered behind the text. The map shows the outlines of continents and major landmasses.

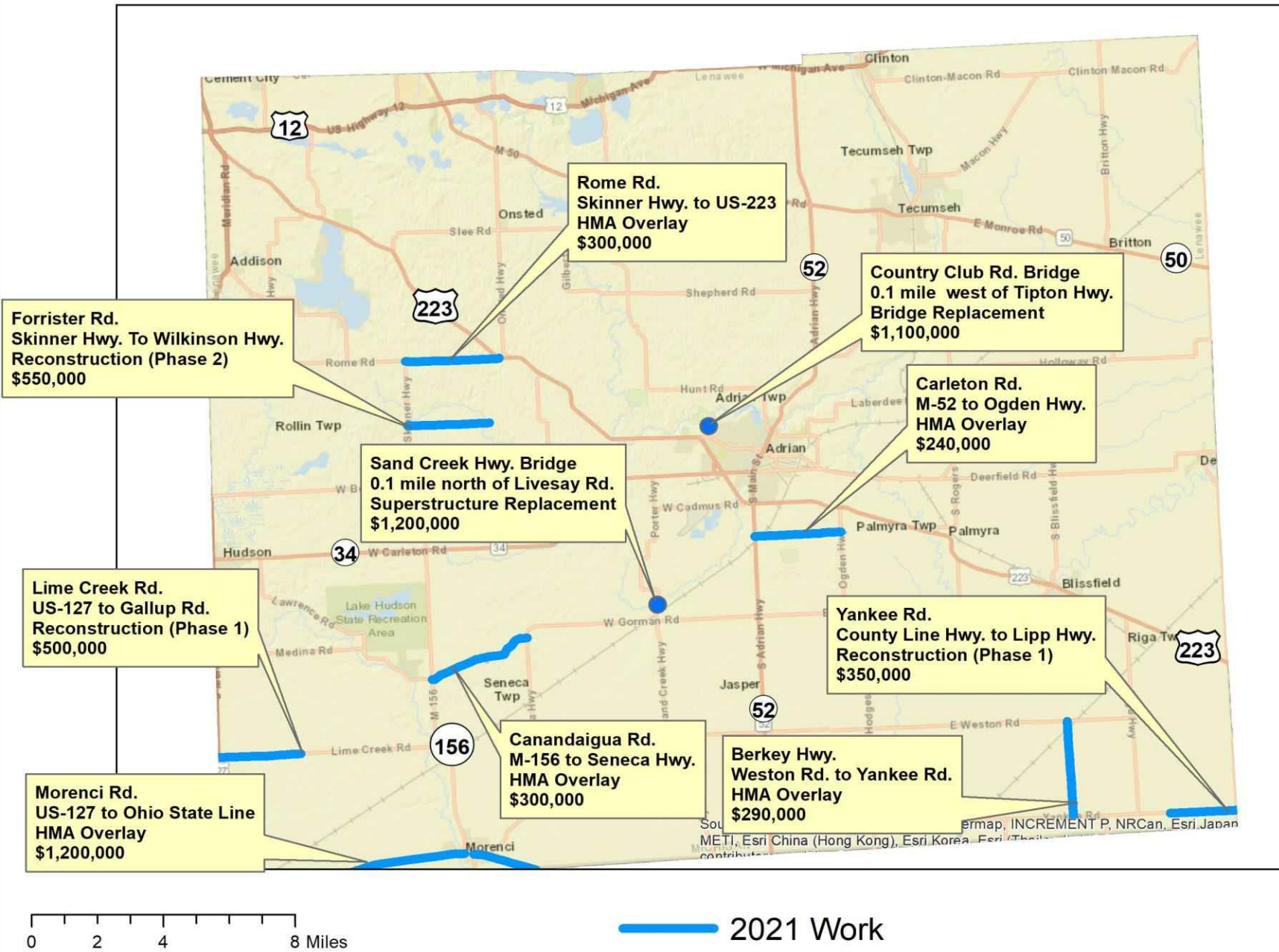
# LCRC 2020-2021 Projects



# 2020 Lenawee County Road Commission Work



# 2021 Lenawee County Road Commission Work

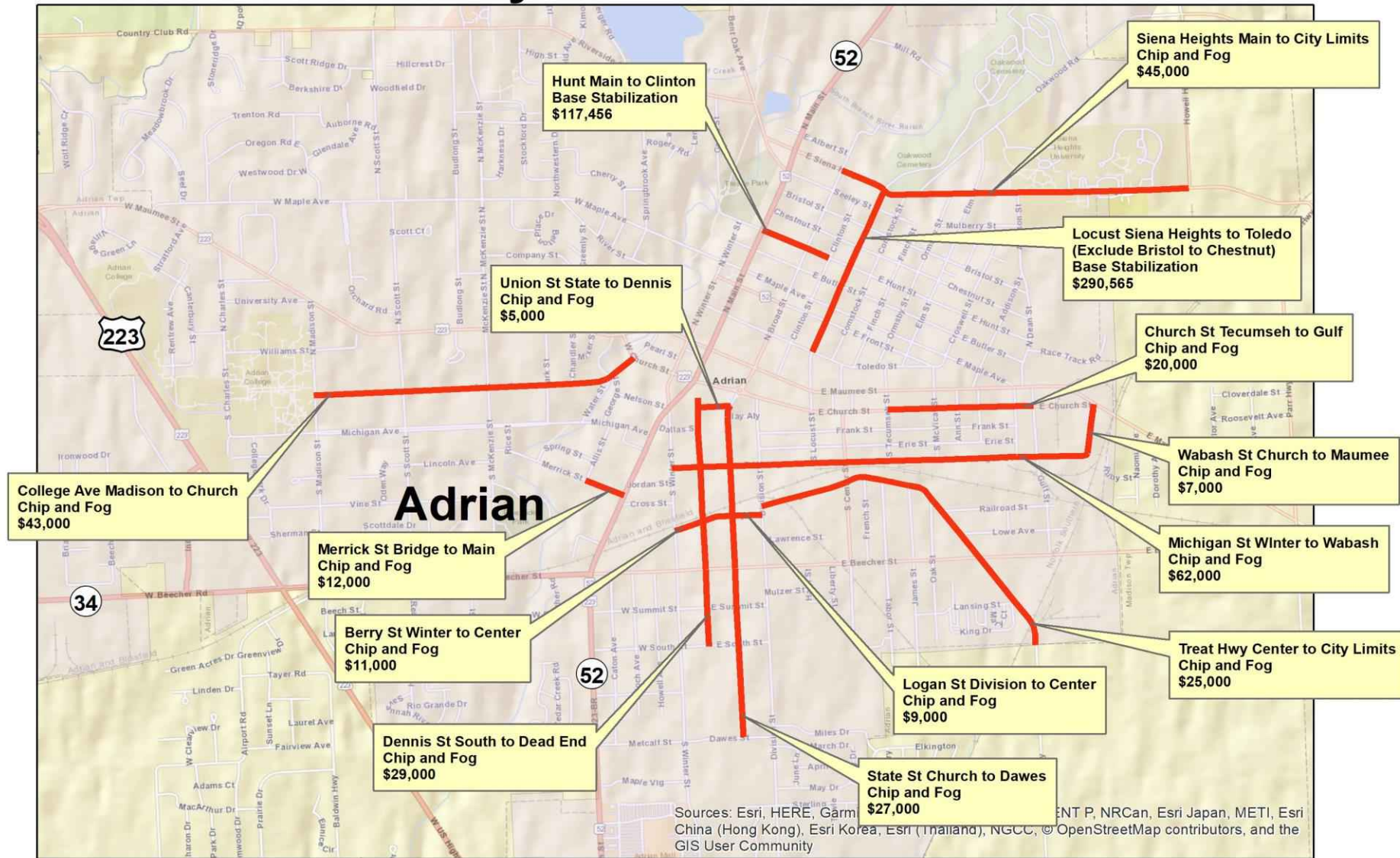


A faint, light blue map of the City of Adrian is visible in the background, showing the city's outline and major roads. The map is centered behind the text.

# **CITY OF ADRIAN 2020- 2021 PROJECTS**



# 2020 City of Adrian Road Work



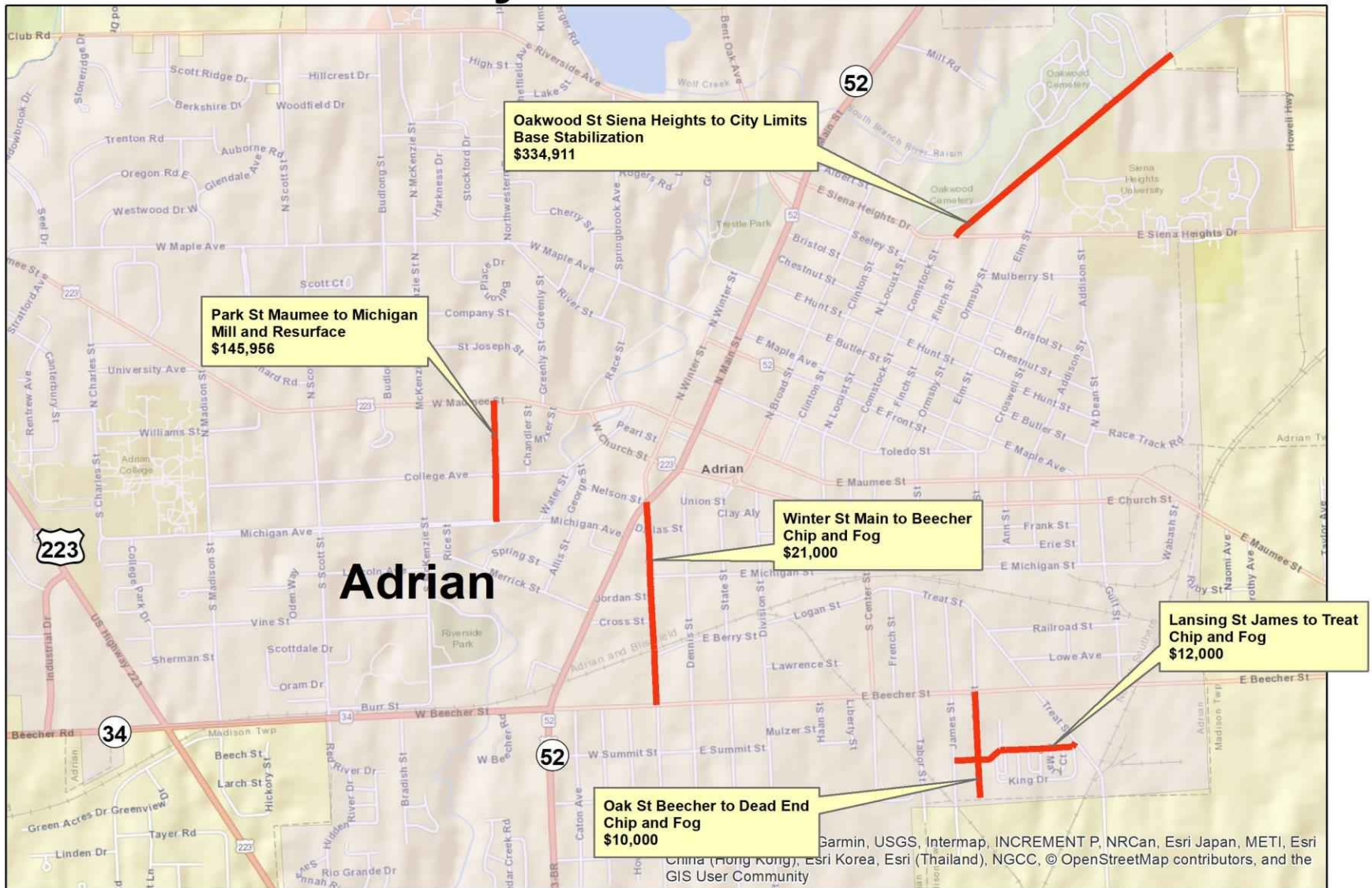
0 0.15 0.3 0.6 Miles

— 2020 Adrian Road Work





# 2020 City of Adrian Road Work



0 0.125 0.25 0.5 Miles

— 2020 Adrian Road Work



# 2021 City of Adrian Road Work

N. Scott Maple to Riverside  
Base Stabilization  
\$500,000

Addison St Siena Heights to Bristol  
Reconstruct  
\$550,000

Oak St Treat to Beecher  
Mill and Resurface  
\$110,000

Lowe St Treat to Dead End  
Reconstruct  
\$500,000

Michigan Ave Charles to Water  
Mill and Resurface  
\$892,500

Miles St Division to Dead End  
Reconstruct  
\$300,000

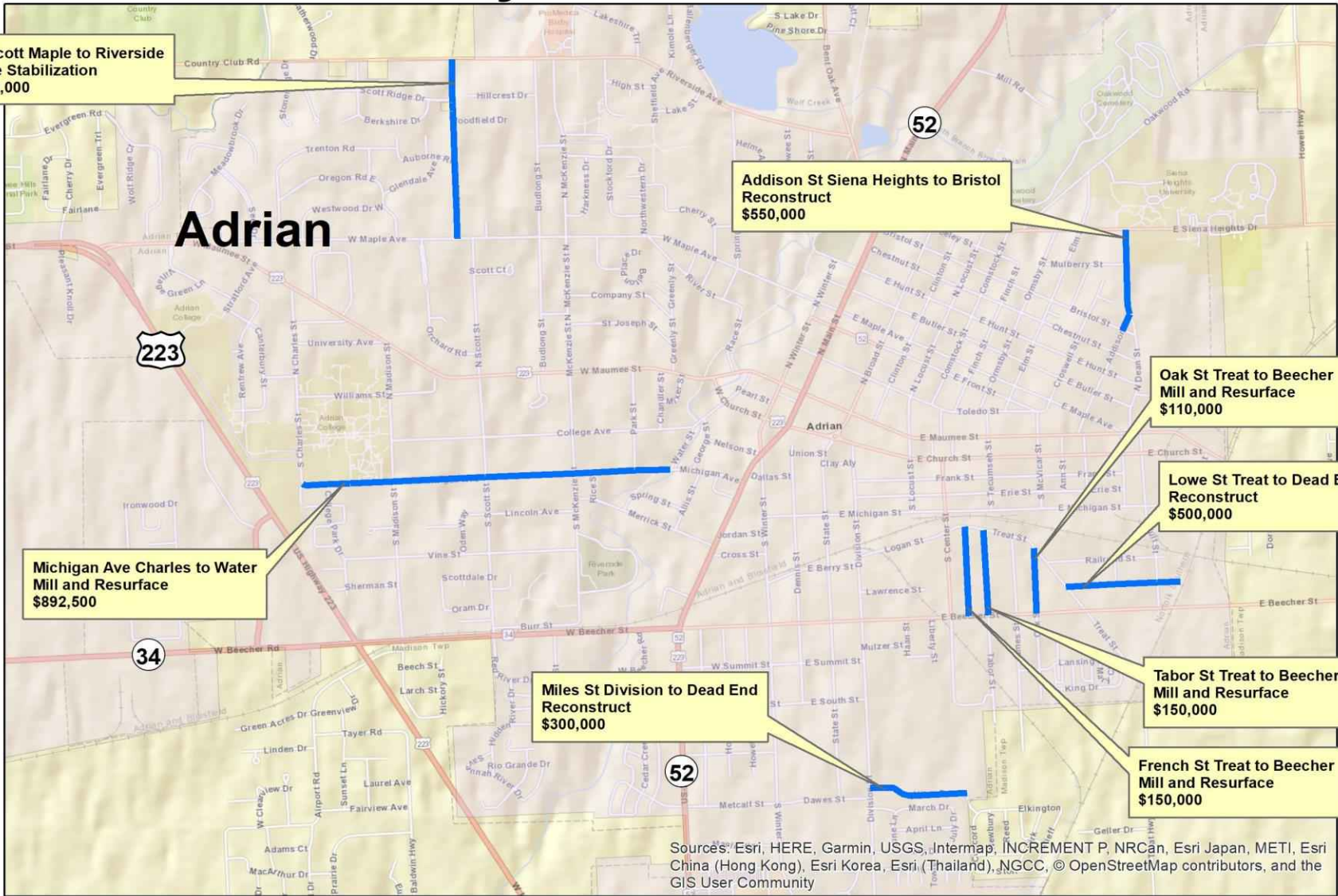
Tabor St Treat to Beecher  
Mill and Resurface  
\$150,000

French St Treat to Beecher  
Mill and Resurface  
\$150,000

Sources: Esri, HERE, Garmin, USGS, Intermap, INCREMENT P, NRCan, Esri Japan, METI, Esri China (Hong Kong), Esri Korea, Esri (Thailand), NGCC, © OpenStreetMap contributors, and the GIS User Community

0 0.125 0.25 0.5 Miles

— 2021 Adrian Road Work



A faded world map is visible in the background, showing the continents of North America, South America, Europe, and Africa. The map is rendered in a light blue and green color scheme, blending into the overall background.

# OTHER LOCAL AGENCIES

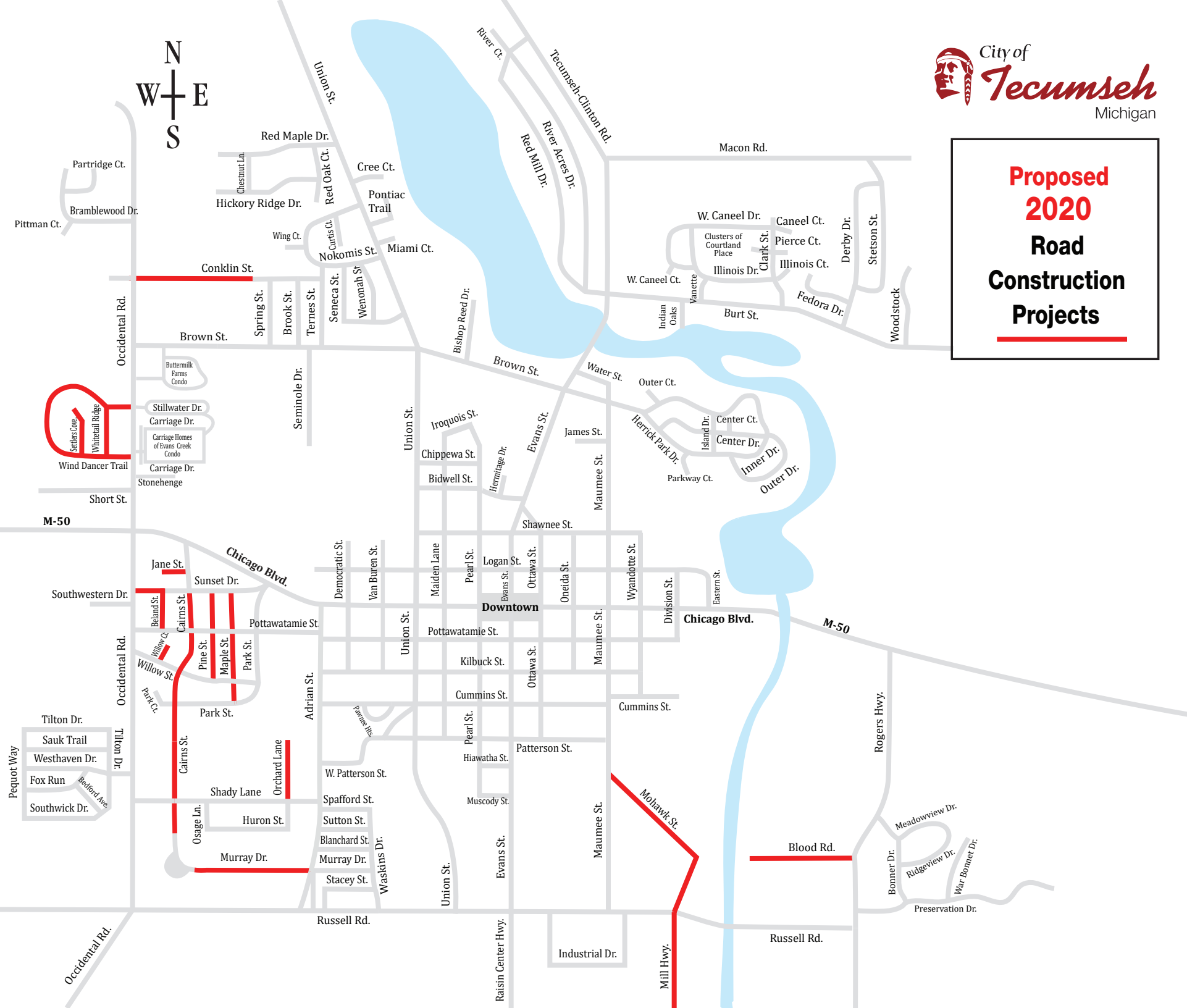




City of  
**Tecumseh**  
Michigan

## Proposed 2020

## Road Construction Projects

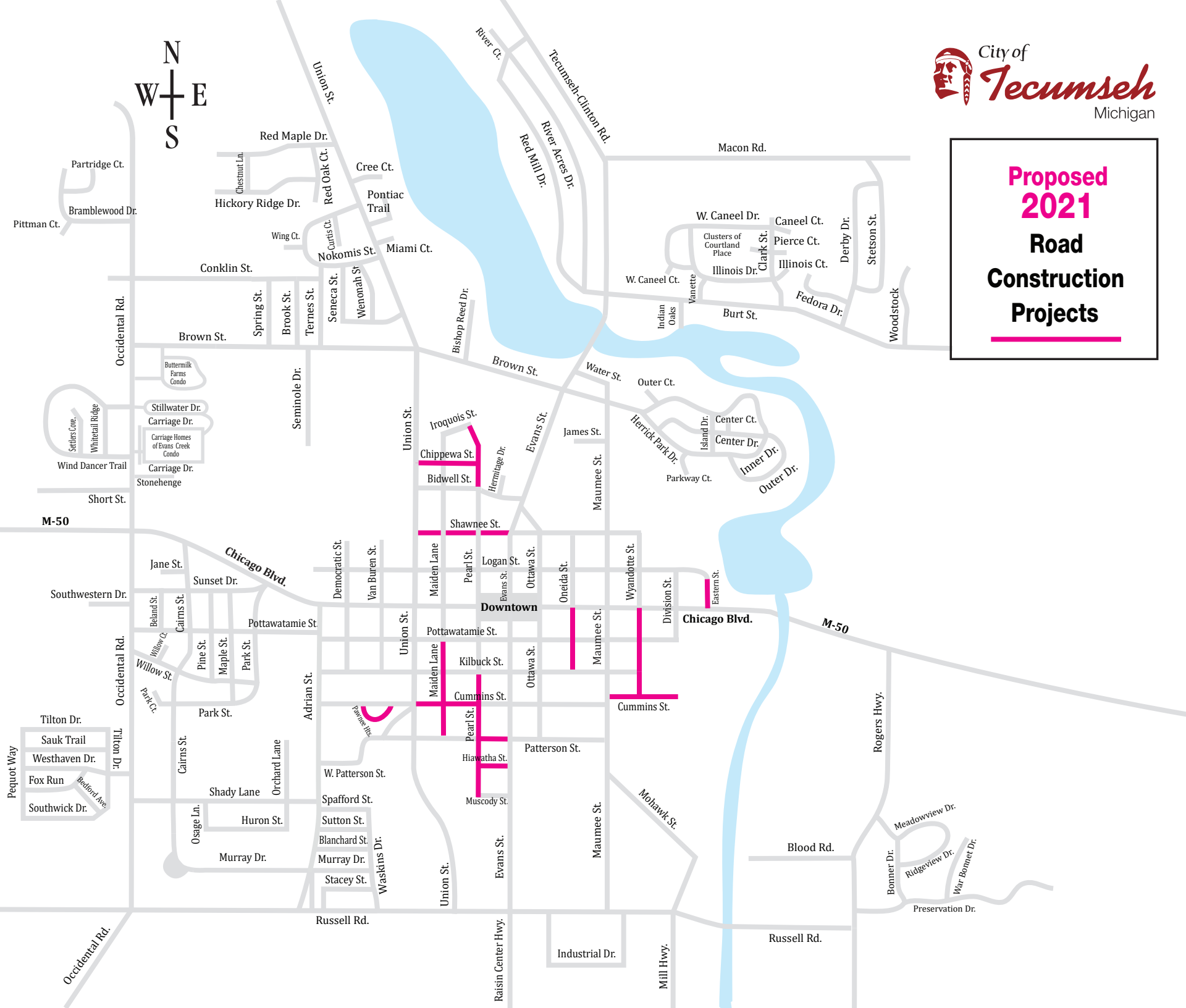




City of  
**Tecumseh**  
Michigan

## Proposed 2021

## Road Construction Projects





# REGION 2 PLANNING COMMISSION UPDATE



A faint, stylized world map is visible in the background, rendered in a light blue color that blends into the overall blue gradient of the slide. The map shows the continents of North America, South America, Europe, and Africa.

# OPEN DISCUSSION