



Lenawee County Planning Commission

Staffed by the Region 2 Planning Commission (R2PC)

120 W. Michigan Avenue • Jackson, MI 49201

Phone (517) 788-4426 • Fax (517) 788-4635

2020 LCPC Annual Report

Section 19(2) of the *Michigan Planning Enabling Act* (PA 33 of 2008, MCL 125.3819(2)) states that "[a] planning commission shall make an annual written report to the legislative body concerning its operations and the status of planning activities, including recommendations regarding actions by the legislative body related to planning and development. Section 103(B) of the *Lenawee County Planning Commission Bylaws* also includes the preparation of an annual report to the County Board as a duty of the Commission. Accordingly, the report for 2020 follows:

1. 2020 LCPC Membership & Officers

The Lenawee County Planning Commission (LCPC) is comprised of seven (7) members. The following commissioners served in 2020:

- Mr. Robert Behnke – Education
- Ms. Karol "KZ" Bolton – County Board of Commissioners
- Mr. Keith Dersham
- Ms. Becky Liedel
- Mr. Bruce Nickel
- Mr. Ralph Tillotson – County Board of Commissioners
- Mr. Dale Witt

Ms. Liedel and Mr. Dersham served as the Chair and Secretary of the LCPC, respectively.

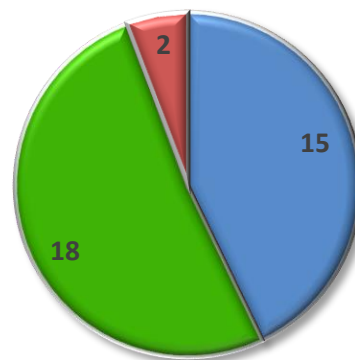
2. Immediate Responsibilities

Despite the COVID-19 pandemic, the Lenawee County Planning Commission accomplished a lot during 2020 including the following responsibilities:

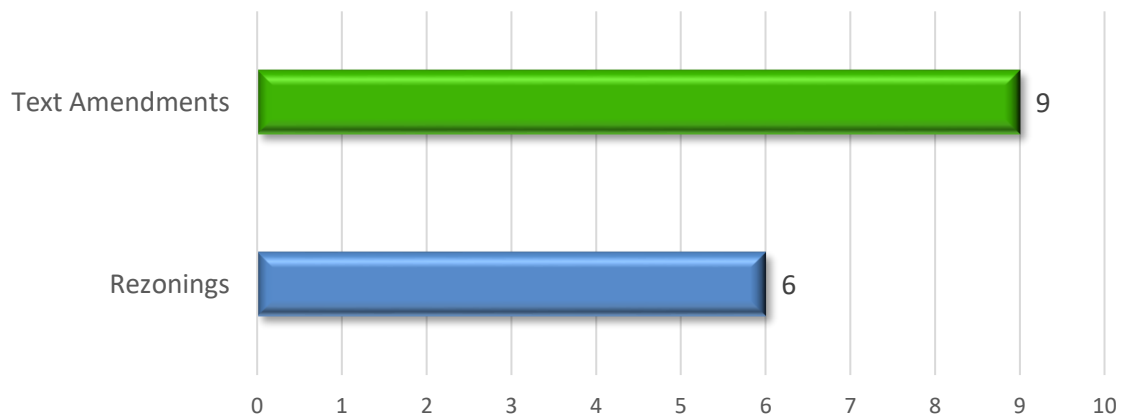
a. Coordinated Zoning

A primary responsibility of the Planning Commission is to review and recommend action on proposed amendments to township zoning ordinances.

The LCPC made 15 recommendations regarding zoning amendments for 10 townships in 2020.



- Zoning Amendments
- PA 116 Applications
- Master Plans



Text amendments accounted for 60% of zoning ordinance amendment requests, covering a variety of issues. For example, several amendments dealt with solar energy, a couple of the amendments addressed medical and/or recreational marihuana, and one dealt with home occupations. Finally, an interim zoning ordinance was proposed in Deerfield Township. Rezoning accounted for 40% of amendment requests.

b. **Coordinated Planning**

Another primary responsibility of the Commission is to review and provide feedback on municipal (i.e., city, village and township) master plans proposed within Lenawee County, as well as master plans proposed by surrounding counties. The LCPC reviewed and commented upon 2 proposed municipal master plans in 2020.

c. **Farmland and Open Space Preservation**

The final primary responsibility of the Planning Commission is to review and make recommendations regarding Farmland and Open Space Preservation (i.e., PA 116) applications to pertinent Township Boards. The LCPC made recommendations on 18 applications regarding the preservation of farmland and open space in 9 townships in 2020.



Ultimate Goal and Objectives

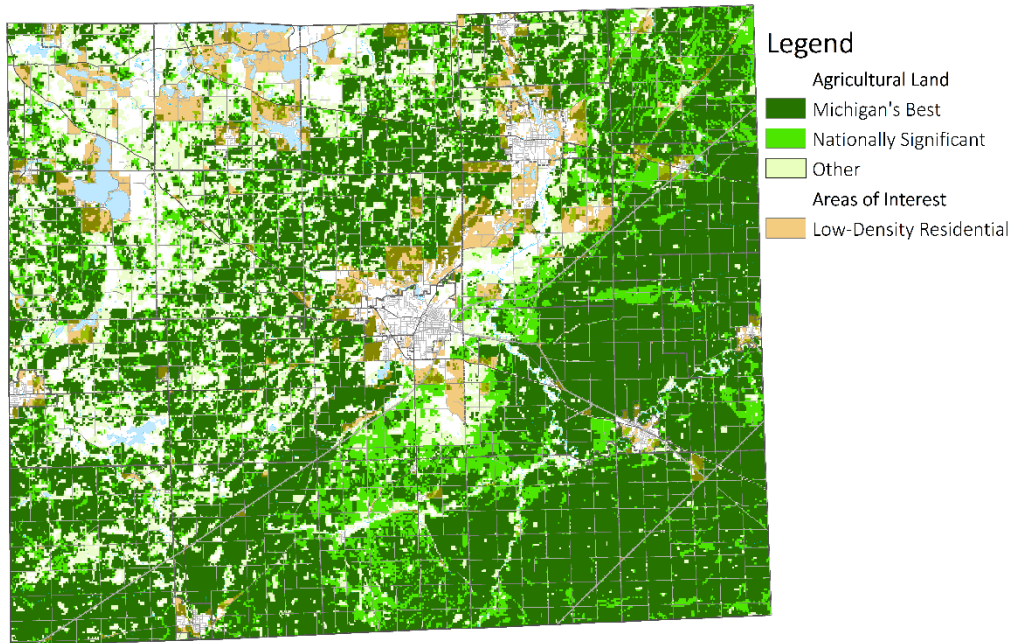
In the long-term, the LCPC seeks to coordinate planning throughout Lenawee County while respecting the planning and zoning authority of municipal governments (i.e., cities, villages, and townships). This will be accomplished over time by:

a. **LCPC Annual Dinner**

The 45th Annual Lenawee County Planning Commission Dinner was not held due to the COVID-19 pandemic. The LCPC plans to resurrect this tradition when conditions permit.

b. **Existing Land Use**

The LCPC—through the R2PC’s economic development program—conducted a county-wide survey of major community facilities, using property assessment data and local knowledge. A map was created showing the various types of community facilities.



The LCPC—also through the R2PC—utilized a study conducted by the American Farmland Trust to map agricultural land in Lenawee County considered to be nationally significant and among Michigan’s Best (see above).

c. **Education and Advocacy**

The Commission will continue to maintain a webpage—located on www.region2planning.com/lenawee-county-planning-commission—regarding the County Planning Commission for the use of its members and the municipalities they serve. Agenda packets (which include staff reports on the requests reviewed by the LCPC), meeting schedules and minutes, and more can be found on the webpage.

3. **Meetings**

The County Planning Commission generally meets on the third (3rd) Thursday of each month at 6:30 pm in the Human Services Building. However, some of those meetings were cancelled and others were conducted online in 2020 due to the COVID-19 pandemic.

*Submitted on the behalf of the Lenawee County Planning Commission
Grant Bauman | LCPC Staff and Recording Secretary | 2-1-21*