

APPENDIX C
MAPPING



Table of Contents

Base

1. Base Map	C-3
-------------------	-----

Communities and Social Vulnerability

2. Municipalities and Places	C-4
3. Urban and Rural Areas	C-5
4. Social Vulnerability	C-6

Natural Resources

5. Topography	C-7
6. Watersheds	C-8
7. Lakes, Ponds, Rivers, and Streams	C-9
8. Flood Zones and Wetlands	C-10
9. Hydric Soils	C-11
10. Quality of Farmland	C-12
11. Forestland and Woodland	C-13

Community Facilities

12. Major Community Facilities	C-14
13. Trails	C-16
14. Public School Districts and Schools	C-17

Transportation Facilities and Utilities

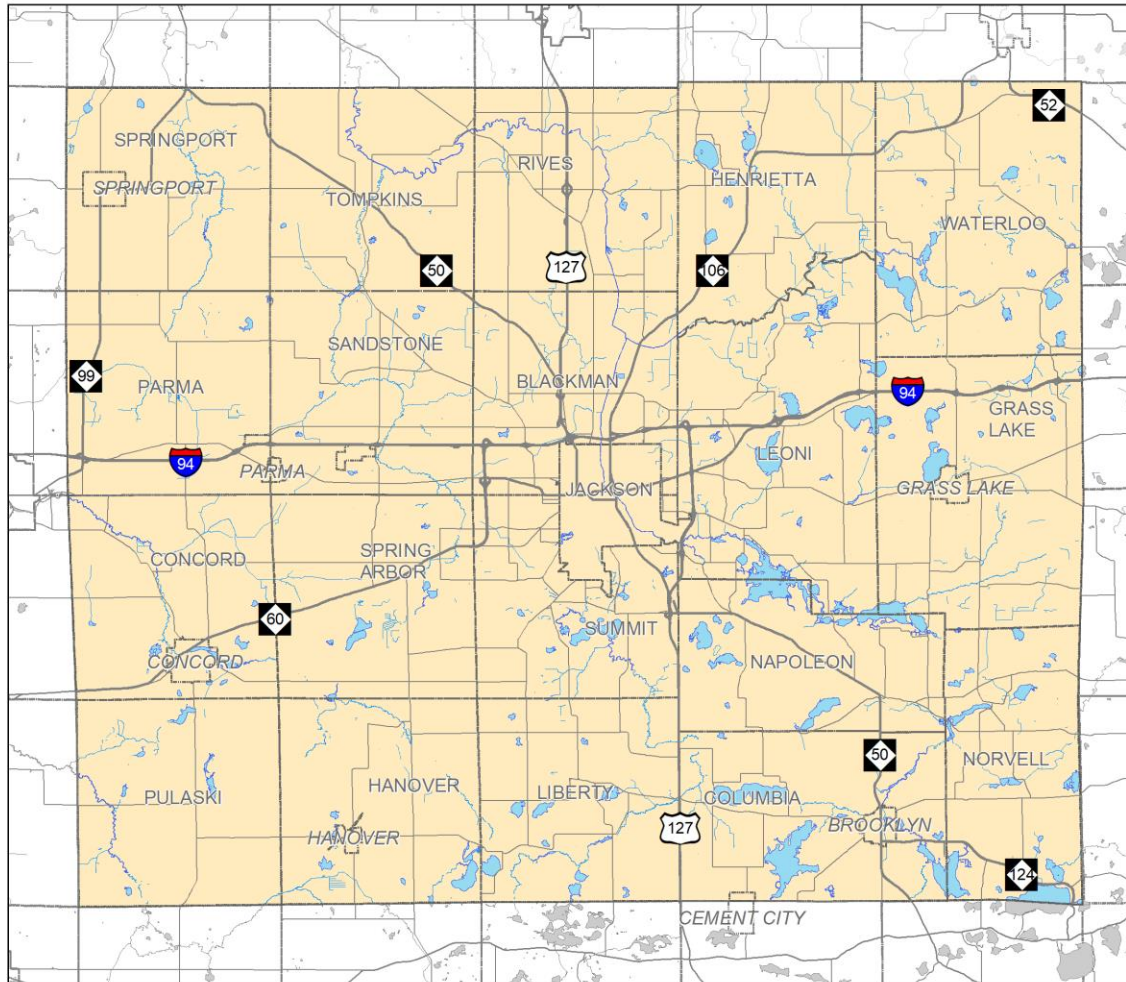
15. Roadway Network	C-19
16. Airports, Railroads, and Transit Service	C-20
17. Airport Permit Zones	C-21
18. Gas Pipelines	C-22
19. Liquid Pipelines	C-23
20. Municipal Wellhead Protection Areas	C-24

Existing Land Use and Zoning

21. Property Assessment	C-25
22. Land Use and Land Cover	C-26
23. Generalized Zoning	C-27

Future Land Use Plan

24. <i>Future Land Use (TBD)</i>	
25. Possible Preservation Areas	C-28



**Jackson County
Master Plan**



Base Map

Legend

Governments

- Municipalities
- Jackson County

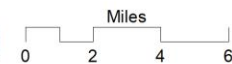
Roads

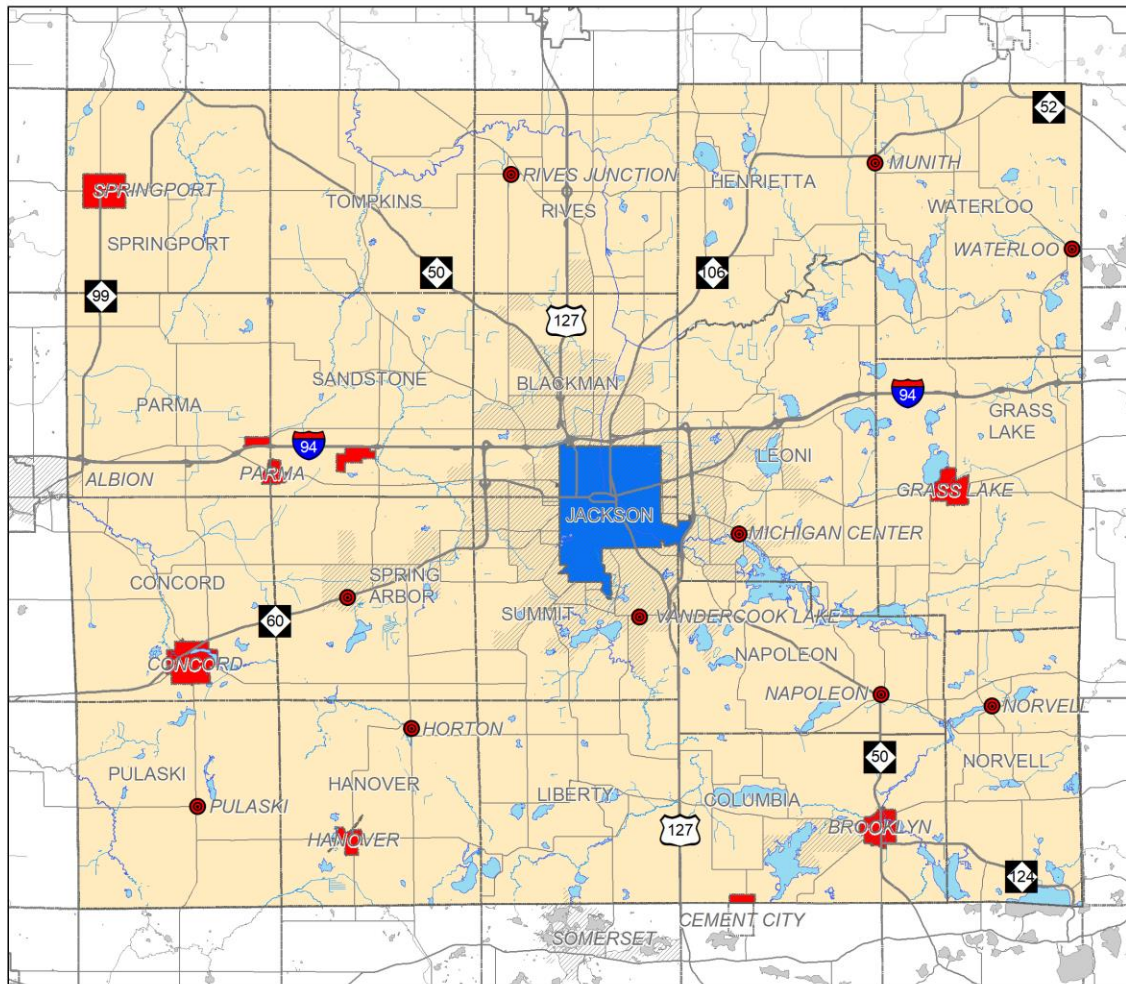
- State Highways
- County Primary Roads

Hydrology

- Rivers
- Lakes

Map Date: 4/2/19





**Jackson County
Master Plan**



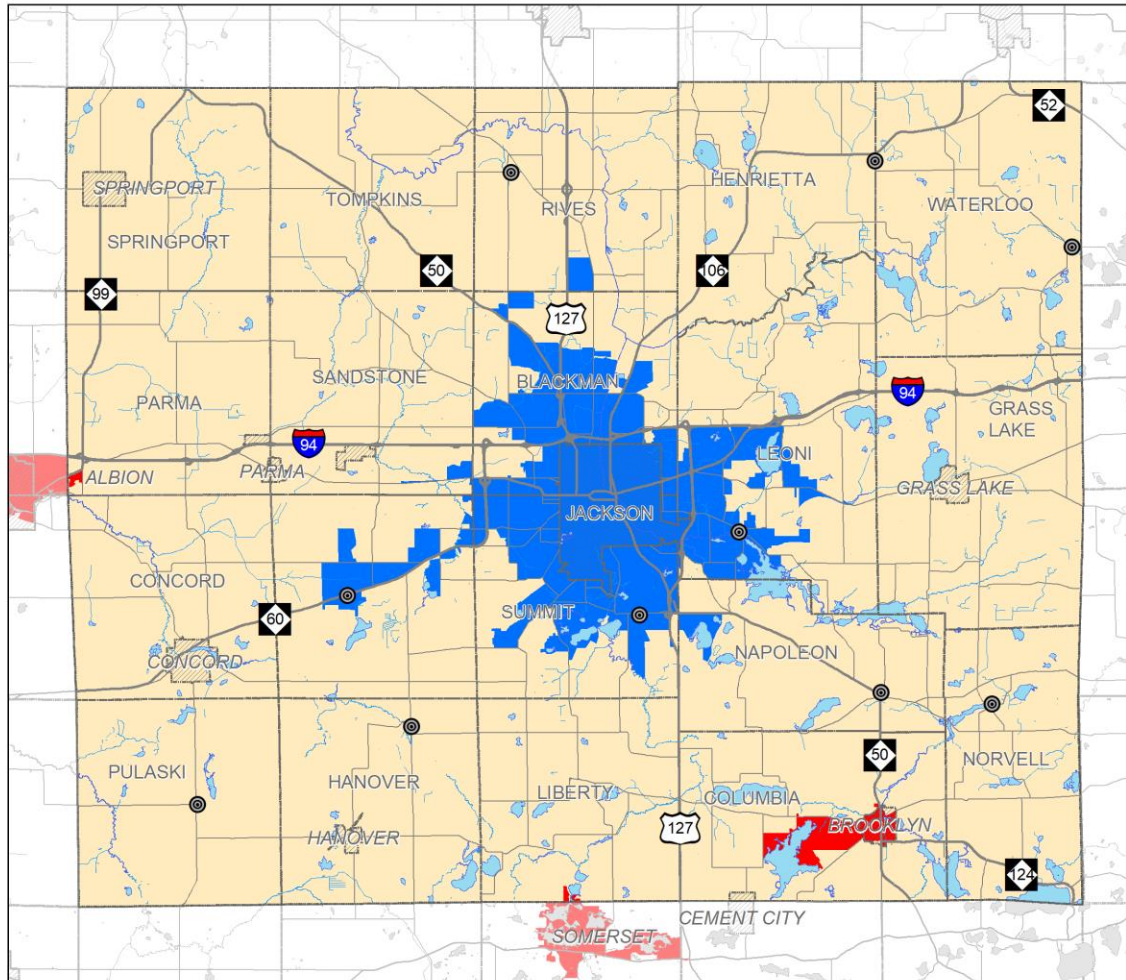
**Municipalities
and Places**

Legend

- Townships
- City of Jackson
- Incorporated Villages
- Other Places
- UAs and UCs

Map Date: 8/4/20





**Jackson County
Master Plan**

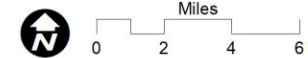


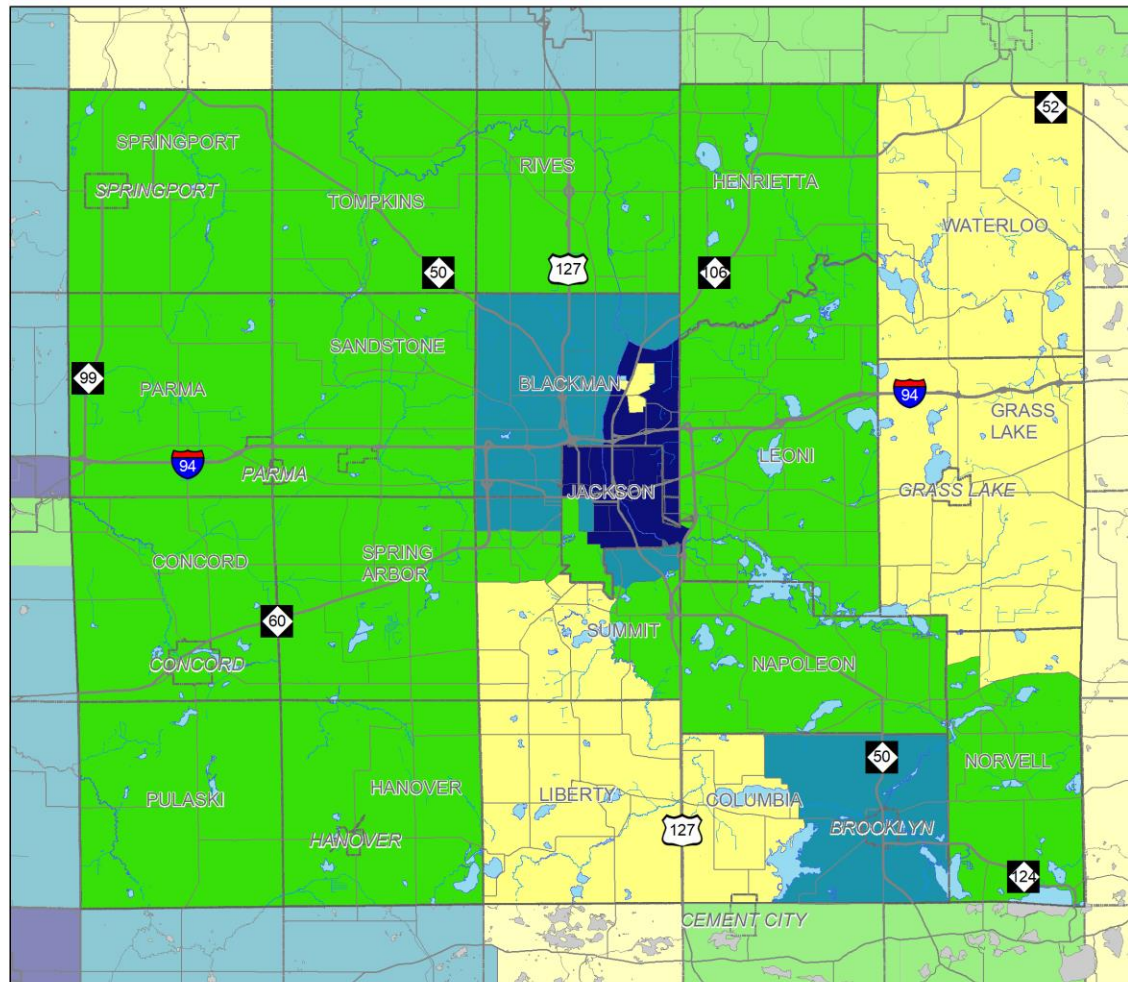
**Urban and
Rural Areas**

Legend

-  Urbanized Areas (UAs)
-  Urban Clusters (UCs)
-  Rural Area
-  Incorporated Cities and Villages
-  Other Places

Map Date: 8/4/20





**Jackson County
Master Plan**



Social Vulnerability

Legend

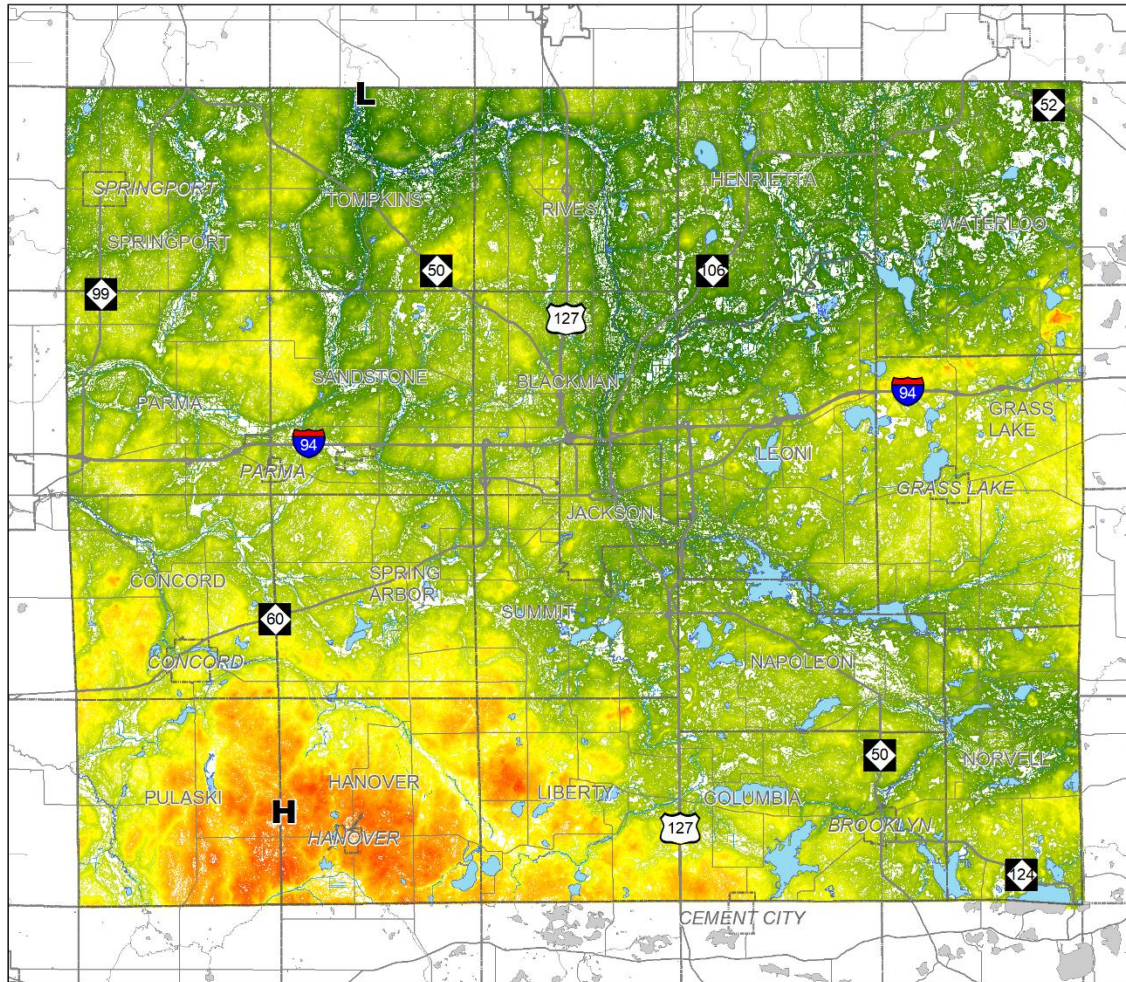
- Lowest Vulnerability
-
-
- Highest Vulnerability

Social Vulnerability Source

Vulnerability to disasters is divided into equal quartiles from data gathered and analysed by the Centers for Disease Control and Prevention | Agency for Toxic Substances and Disease Registry | Geospatial Research, Analysis, and Services Program. Social Vulnerability Index 2018 Database Michigan. data-and-tools-download.html.

Map Date: 4/2/19



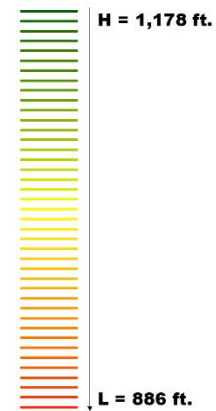


**Jackson County
Master Plan**



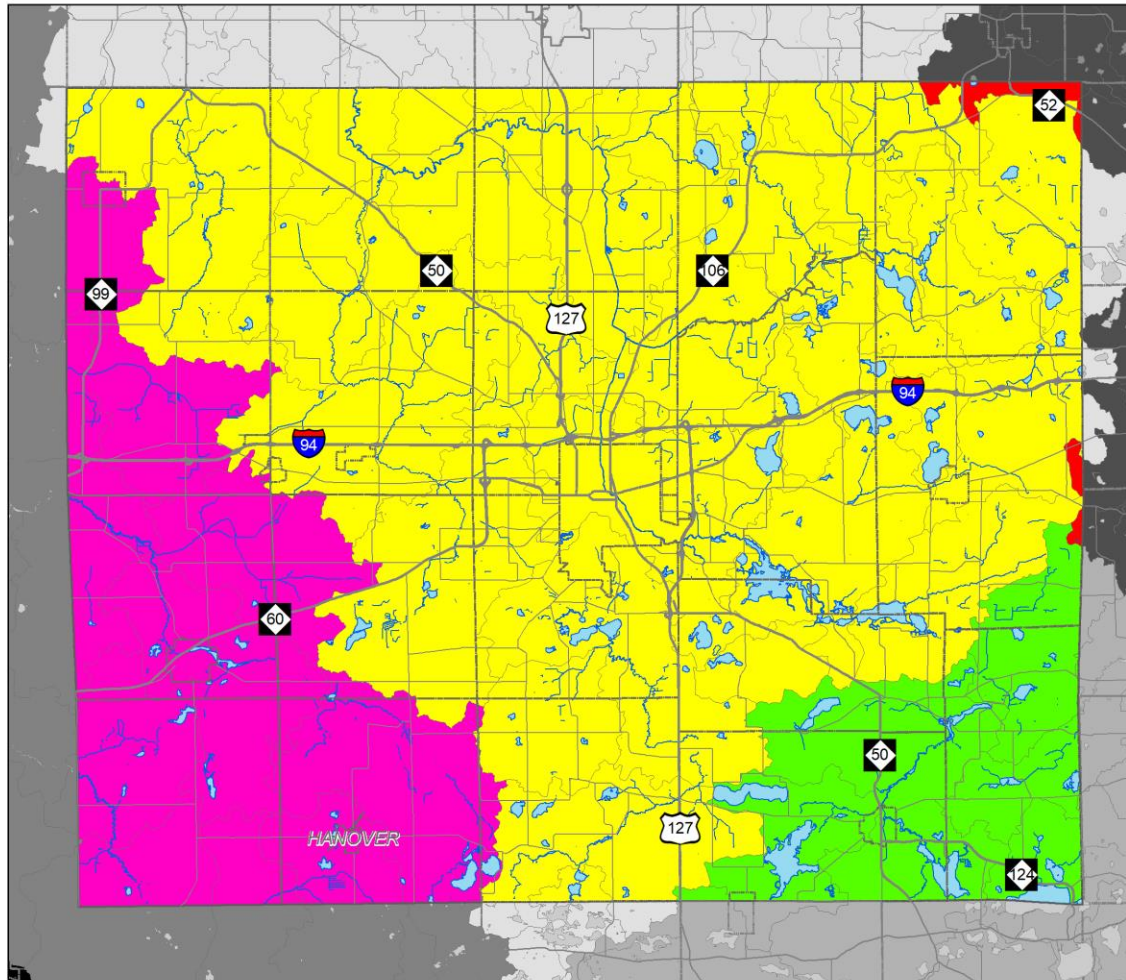
Topography

Legend



Map Date: 6/3/19





**Jackson County
Master Plan**



Watersheds

Legend

Watersheds

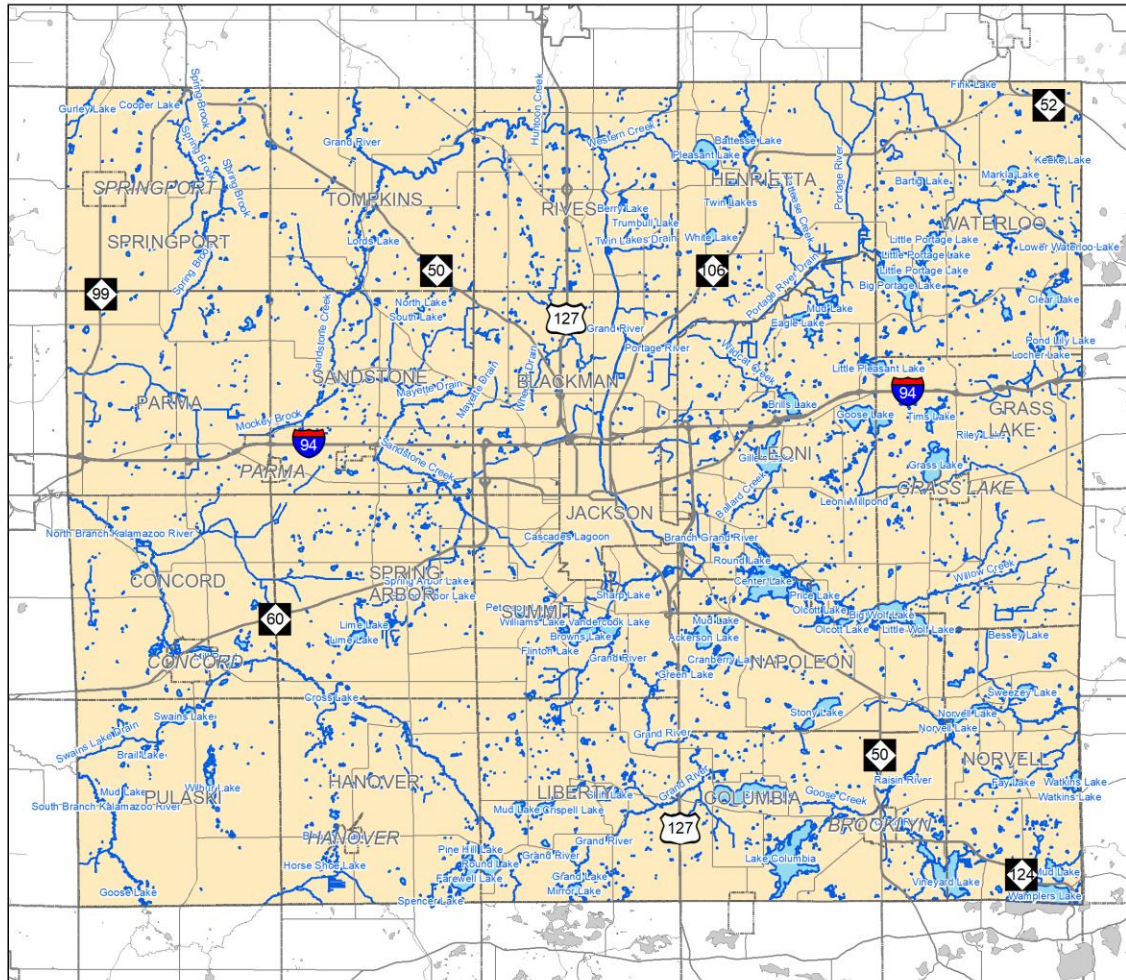
- Upper Grand River
- Huron River
- Kalamazoo River
- Raisin River

Surface Water

- Rivers
- Lakes

Map Date: 2/21/19





Jackson County
Master Plan



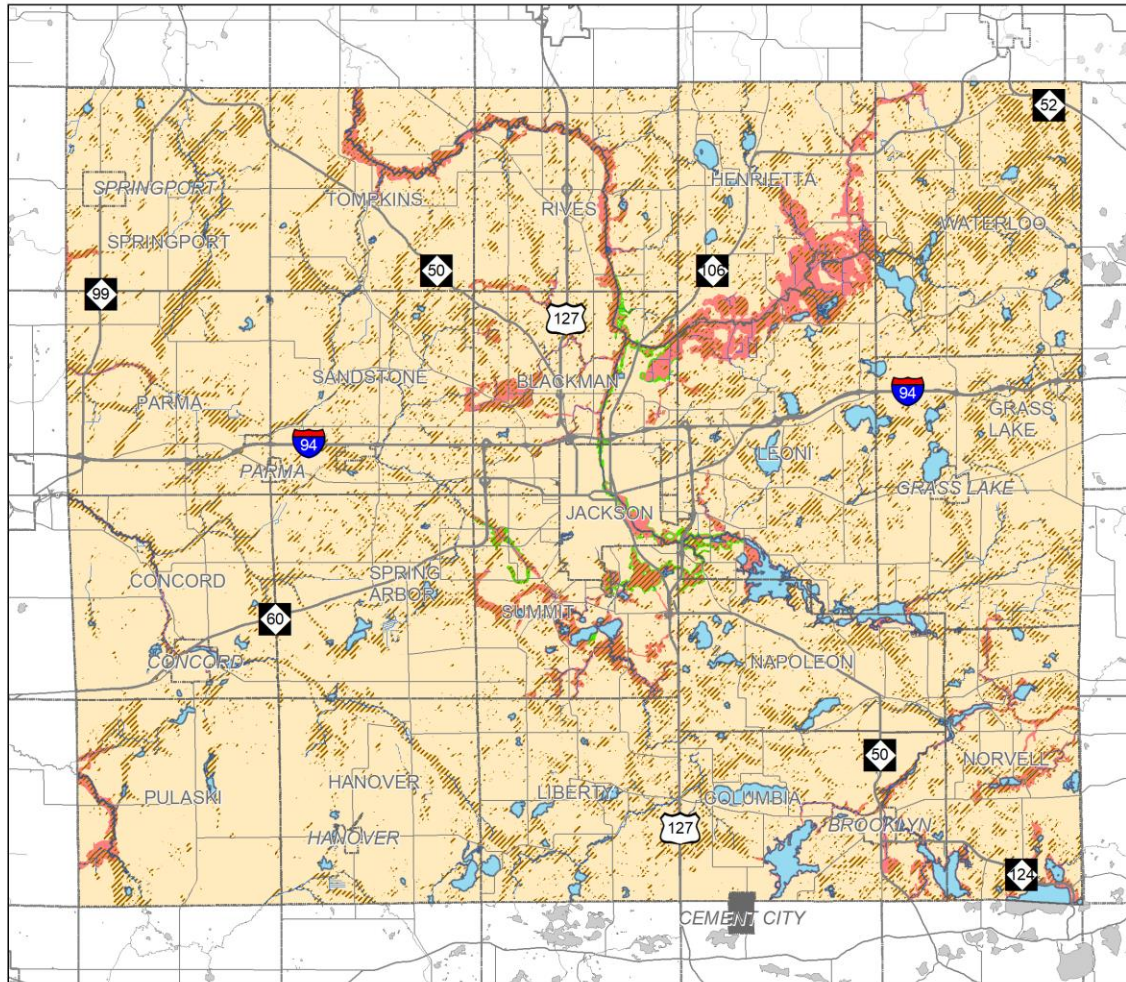
**Lakes, Ponds,
Rivers, and Streams**

Legend

- Lakes and Ponds
- Rivers and Streams

Map Date: 4/4/19





**Jackson County
Master Plan**



**Flood Zones
and Wetlands**

Legend

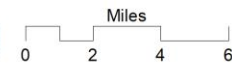
Flood Zones

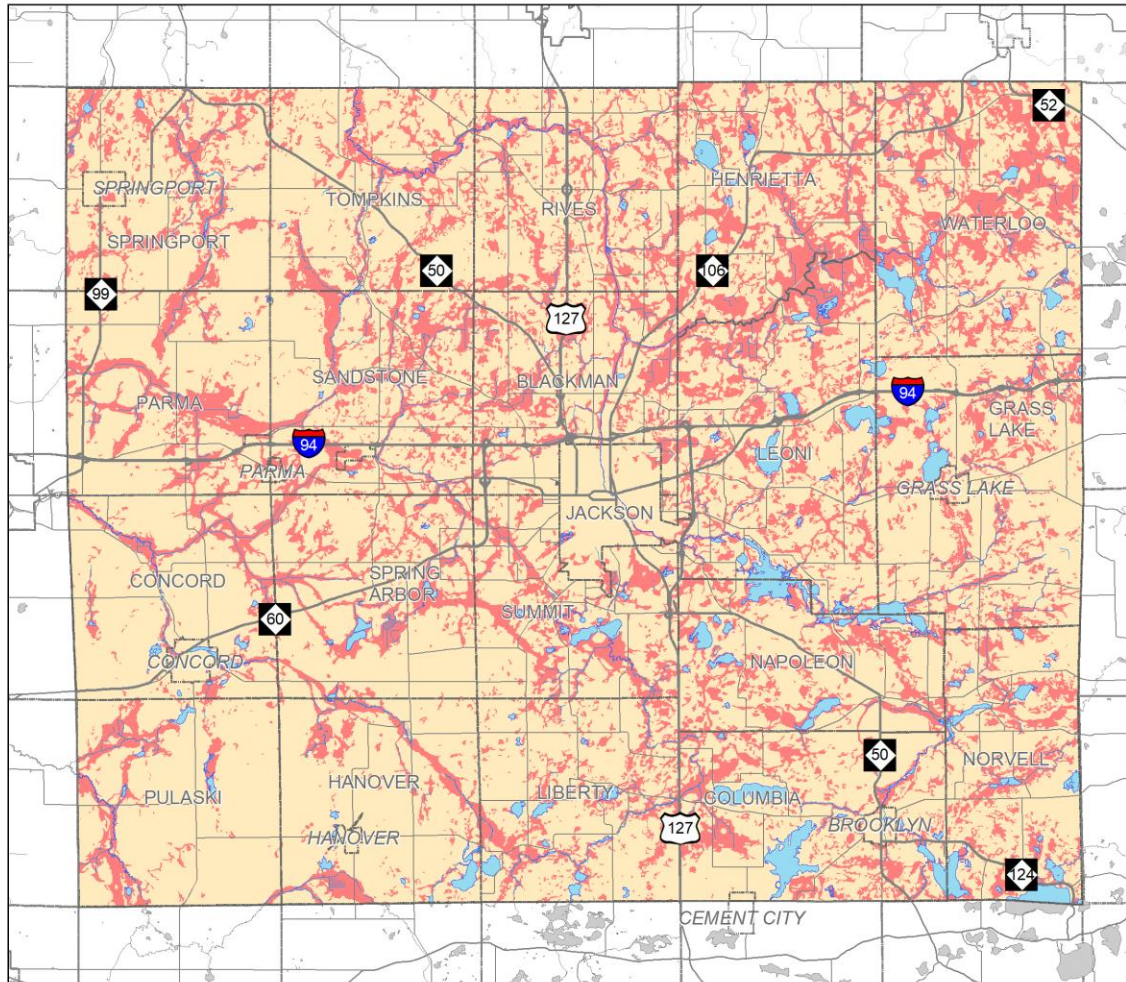
-  100-Year Flood Zone
-  500-Year Flood Zone
-  Not Mapped

Wetlands

-  Wetlands

Map Date: 4/4/19






**Jackson County
Master Plan**

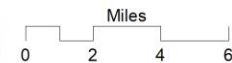


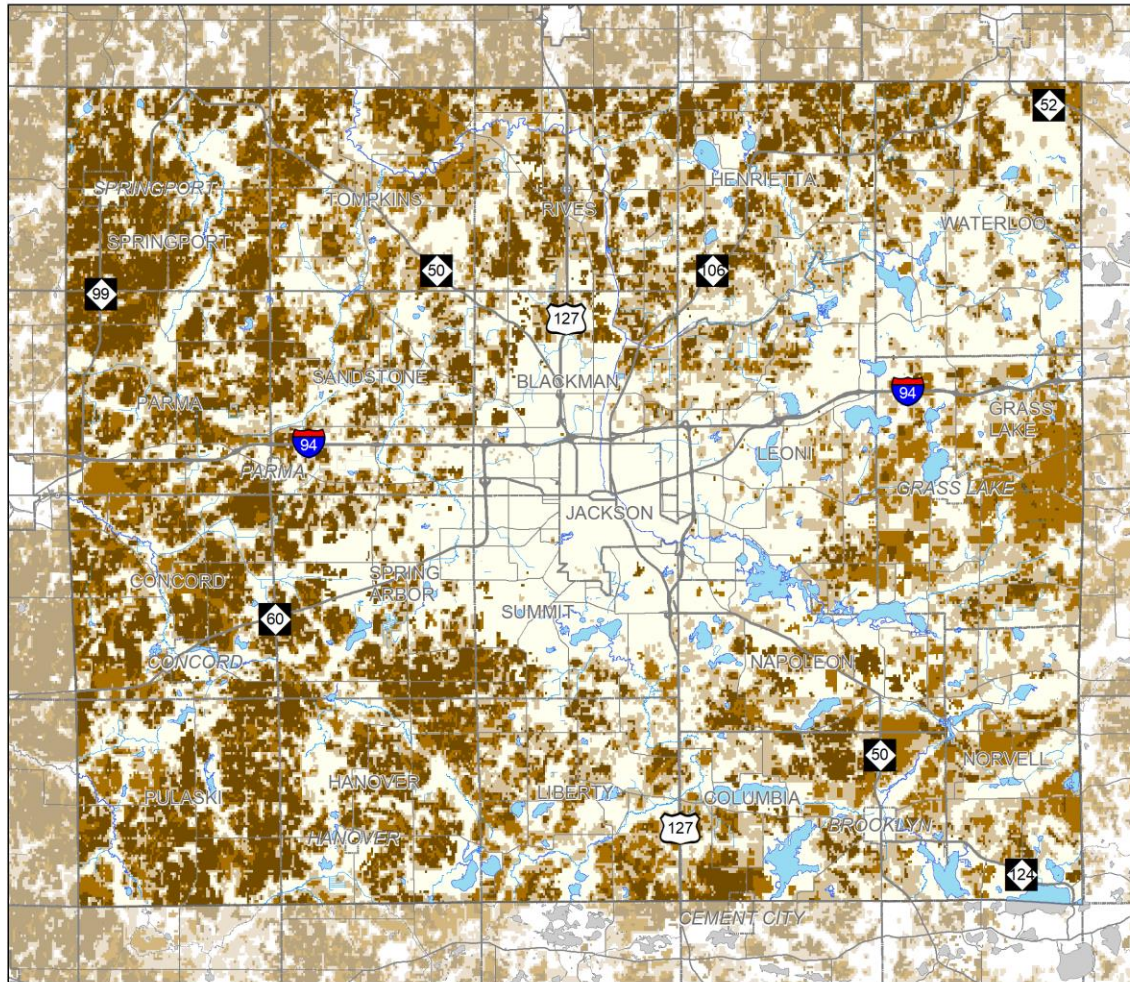
Hydric Soils

Legend

 Hydric Soils

Map Date: 2/21/19





**Jackson County
Master Plan**



**Quality of
Farmland**

Legend

- Michigan's Best Agricultural Land
- Nationally Significant Agricultural Land
- Other Agricultural Land

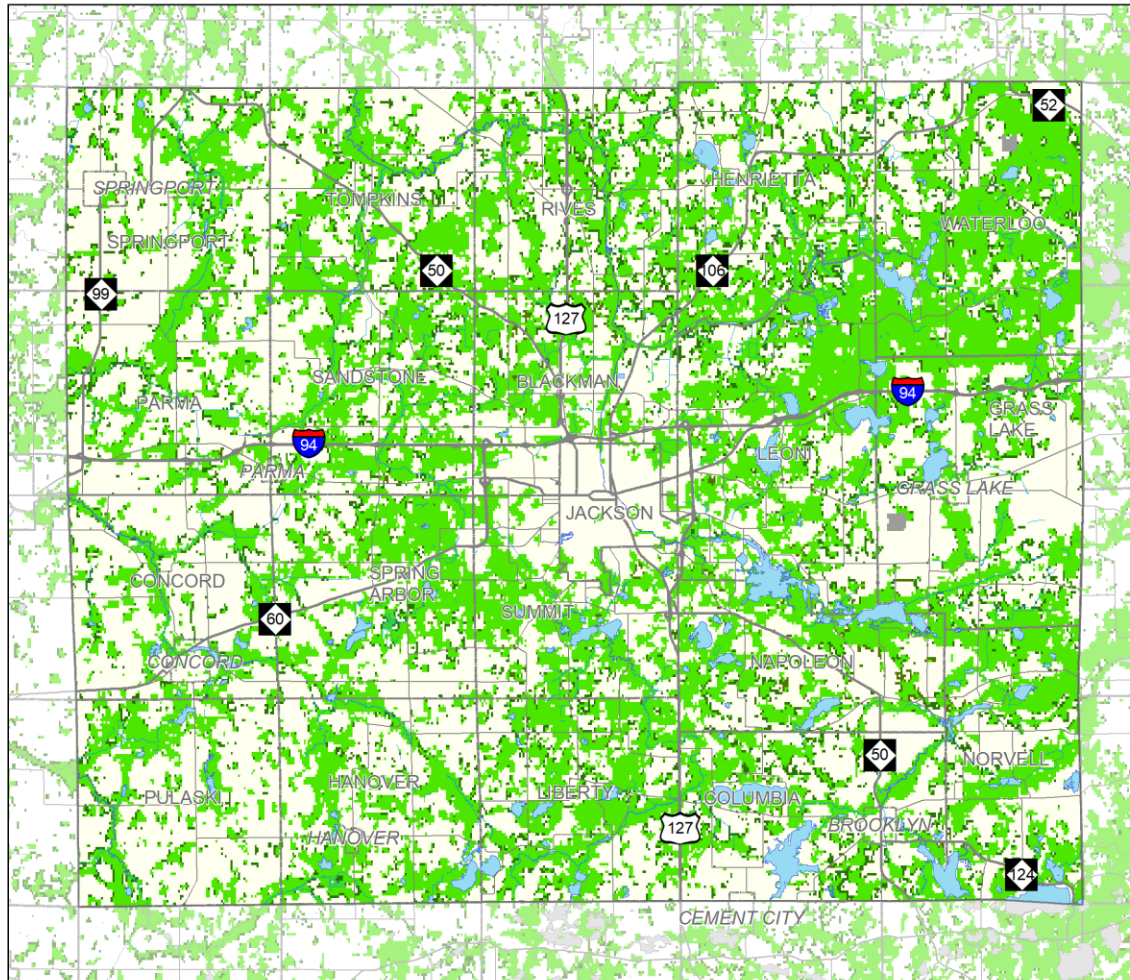
Notes and Data Source

This map represents the quality of agricultural land in 2016. Nationally significant land meets the minimum productivity, versatility, and resilient (PVR) threshold set by the American Farmland Trust (AFT). Michigan's best land has a PVR value above the state's median.

The land use data is owned (and was developed) by the American Farmland Trust (AFT) and Conservation Science Partners for the Farms Under Threat program (as directed by the AFT).

Map Date: 8/3/20





**Jackson County
Master Plan**



**Forestland
and Woodland**

Legend

- Forestland
- Woodland
- Federal Land

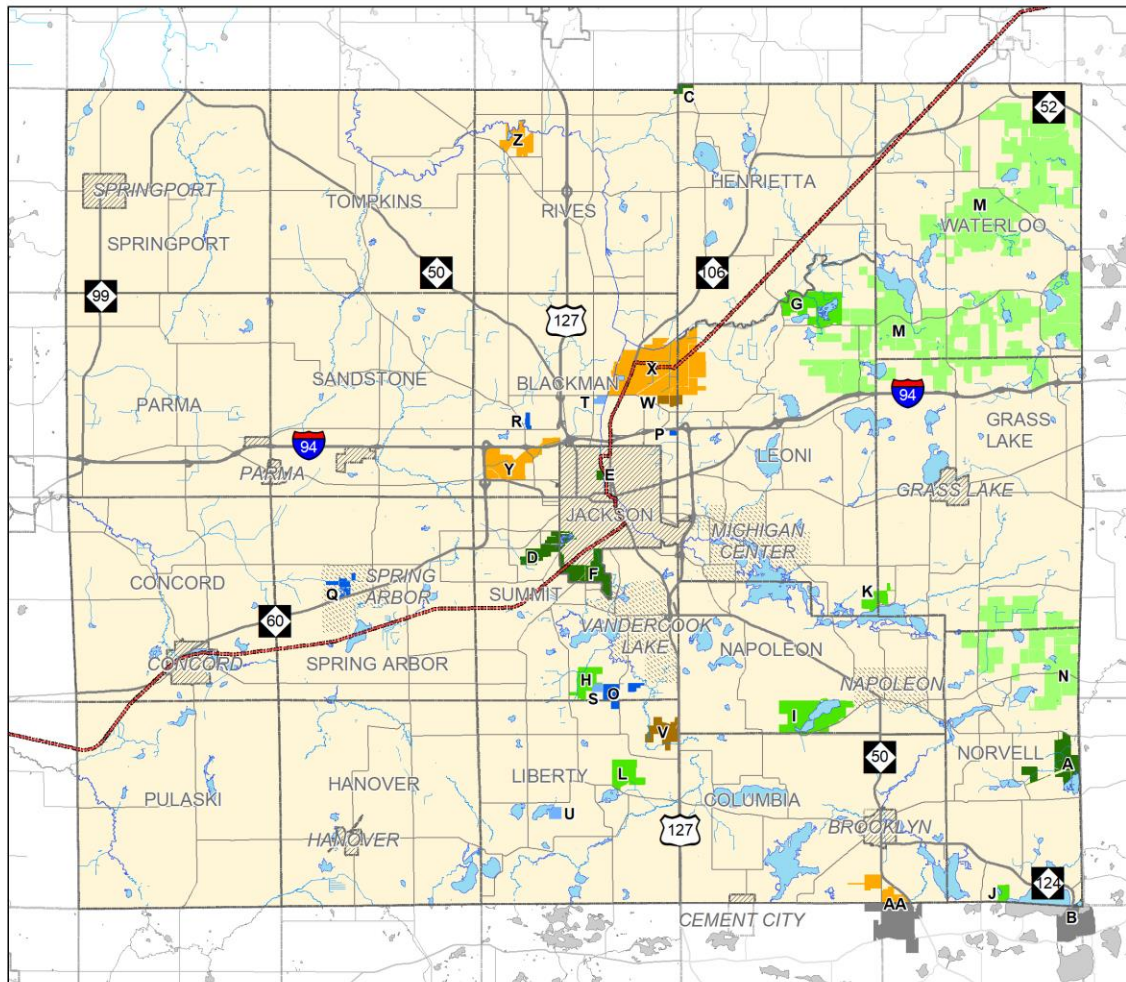
Notes and Data Source

The land use data is owned (and was developed) by the American Farmland Trust (AFT) and Conservation Science Partners for the Farms Under Threat program (as directed by the AFT).

This map represents the major land uses in 2016. 'Forestland and woodland' includes 'federal lands' (with and without grazing). 'Woodland' is 'forestland' associated or adjacent to farmland.

Map Date: 8/3/20





**Jackson County
Master Plan**



**Major
Community
Facilities**

Legend

- State, County, and City Parks
- Camps and Nature Preserves
- State Game & Recreation Areas
- Colleges
- Jackson County ISD
- Landfills
- Other Major Facilities
- Cities and Villages
- Census Designated Places
- Emerging Regional Trail Corridor

Map Date: 4/30/19



Major Community Facilities

State, County, and City Parks

- A. Watkins Lake State Park
- B. W.J. Hayes State Park
- C. Meridian Baseline State Park
- D. Sparks Foundation (Cascades) County Park
- E. James J. Keeley County Park (Jackson County Fairgrounds)
- F. Ella Sharp Park

Camps and Nature Preserves

- G. Phyllis Haehnle Memorial Audubon Sanctuary
- H. Dahlem Center
- I. YMCA Storer Camps
- J. Camp O' the Hills (Girl Scouts of America)
- K. Camp Teetonkah (Boy Scouts of America)
- L. MacCredy Reserve (MSU)

State Game and Recreation Areas

- M. Waterloo State Recreation Area
- N. Sharonville State Game Area

Colleges

- O. Jackson College (Central Campus)
- P. Jackson College (W. J. Maher Campus)
- Q. Spring Arbor University
- R. Baker College

Jackson County ISD (Intermediate School District)

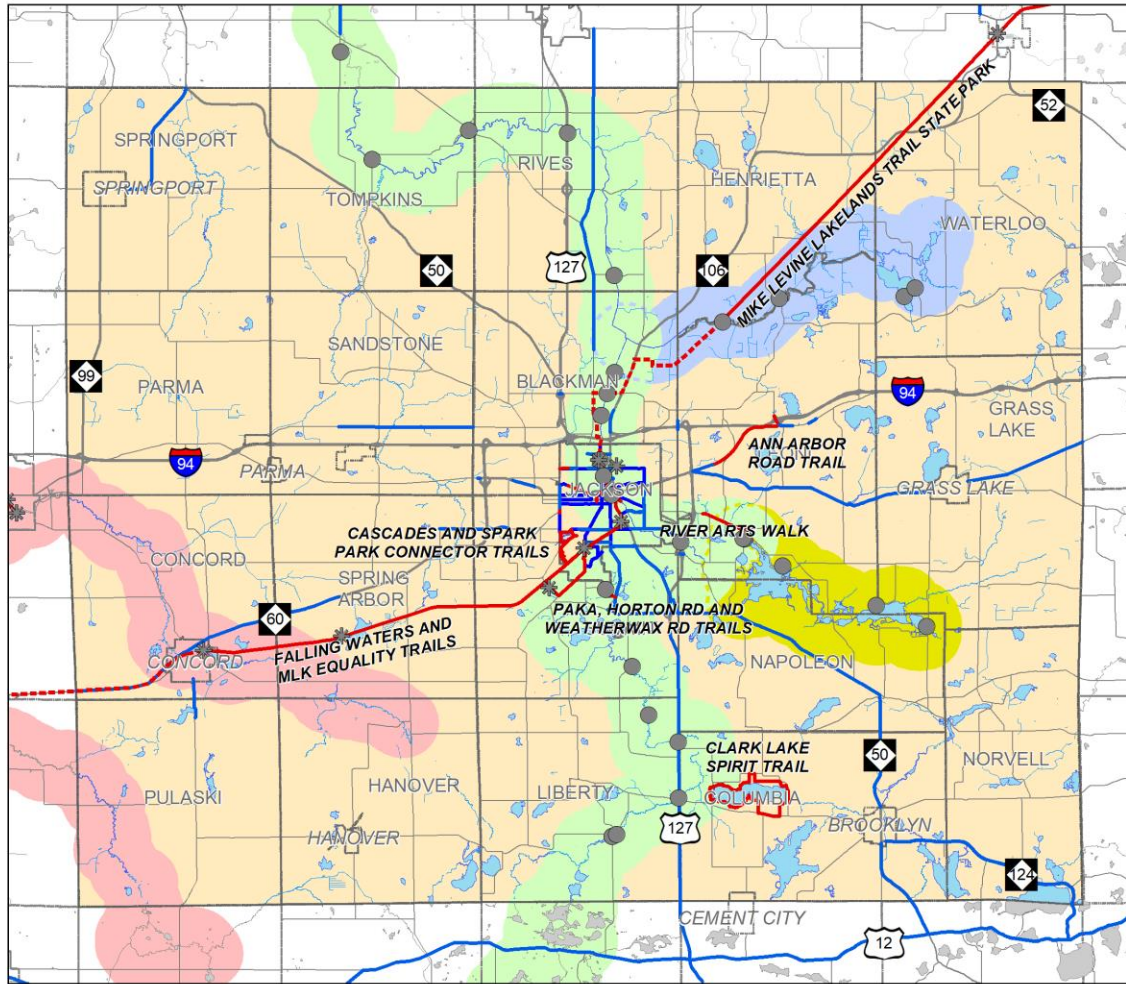
- S. Jackson Area Career Center
- T. Tarrant and Kit Young Center
- U. Camp McGregor

Landfills

- V. Liberty Landfill
- W. McGill Road Landfill

Other Major Facilities

- X. State of Michigan Prisons
- Y. Jackson County Airport – Reynolds Field
- Z. Youth Haven
- AA. Michigan International Speedway



**Jackson County
Master Plan**



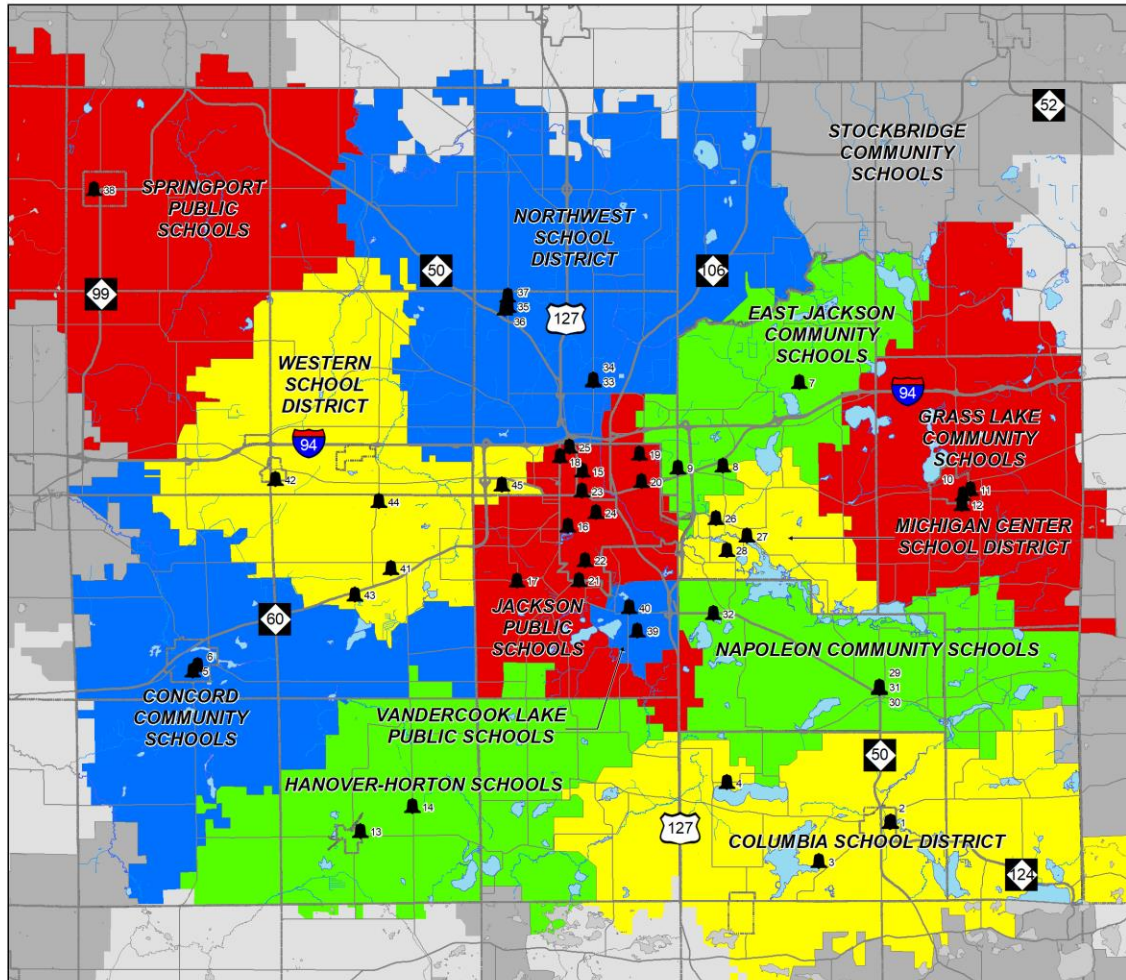
Trails

Legend

- Nonmotorized Trails**
 - Existing Shared Use Paths
 - - - Planned Shared Use Paths
 - Existing Paved Shoulders/Bike Lanes
 - * Trail Head
- Planned Water Trails**
 - Upper Grand River
 - Chain of Lakes
 - Portage River
 - Planned Canoe/Kayak Launch Sites
- Existing Water Trails**
 - Kalamazoo River - North and South Branches

Map Date: 9/3/19











**Jackson County
Master Plan**



**Public School
Districts and Schools**

Legend

-  School Districts in the Jackson Intermediate School District
-  School Districts in Other Intermediate School Districts
-  School District
-  School District
-  School Districts in Other Intermediate School Districts
-  Public School Sites

Map Date: 4/9/20



Public School Districts

Columbia School District

1. Columbia Elementary School
2. Columbia Upper Elementary School
3. Columbia Central Jr. and Sr. High Schools (Fitness Center)
4. Columbia Options High School

Concord Community Schools

5. Concord Elementary and Middle Schools
6. Concord High School

East Jackson Community Schools

7. East Jackson Elementary School
8. East Jackson Secondary School
9. East Jackson Alternative School

Grass Lake Community Schools

10. George Long Elementary School and Little Warriors Pre-School and Daycare
11. Grass Lake Middle School
12. Grass Lake High School

Hanover-Horton School District

13. Hanover-Horton Elementary School and Early Impressions Preschool & Childcare Center

14. Hanover-Horton Middle and High Schools

Jackson Public Schools

15. Bennett Elementary School
16. Cascades and Frost Elementary Schools
17. Dibble Elementary School
18. Hunt Elementary School
19. Northeast Elementary School
20. JPS Montessori Center
21. Sharp Park IB World School
22. Middle School at Parkside and Fourth Street Learning Center
23. Jackson High School and Jackson Pathways
24. T. A. Wilson Academy

Michigan Center Schools

25. Arnold Elementary School
26. Keicher Elementary School
27. Michigan Center Jr./Sr. High School

Napoleon Community Schools

28. Ezra Eby Elementary School and Pirates Cove Pre-School and Child Care
29. Napoleon Middle School
30. Napoleon High School

31. Ackerson Lake High School and Community Center

Northwest Community Schools

32. Northwest Early Elementary School
33. Northwest Elementary School
34. R.W. Kidder Middle School
35. Northwest High School
36. Northwest Alternate High School

Springport Public Schools

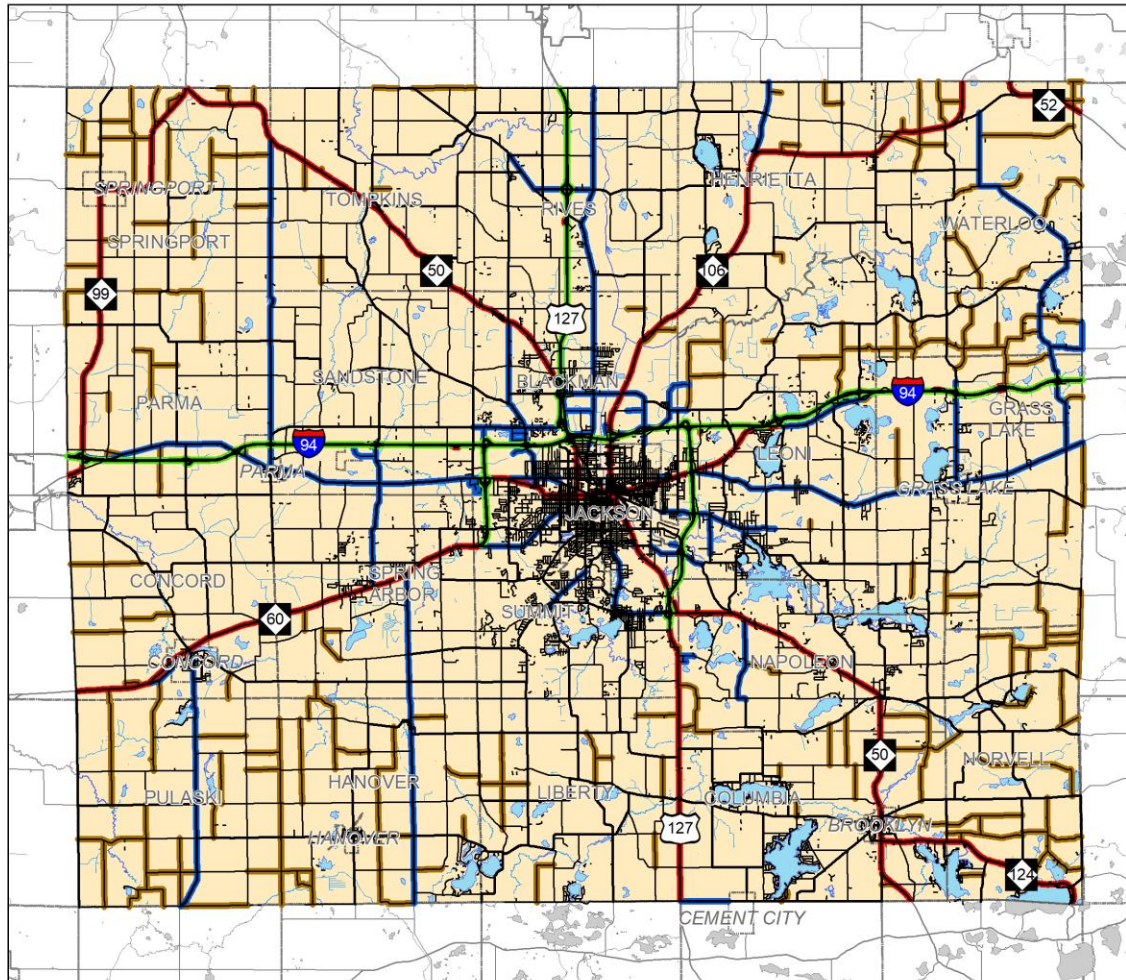
37. Springport Elementary, Middle, and High Schools

Vandercook Lake Public Schools

38. Townsend Elementary School
39. Vandercook Lake Middle/High School

Western School District

40. Bean Elementary School
41. Parma Elementary School
42. Warner Elementary School
43. Western Middle and High Schools
44. Western Career Prep High School



**Jackson County
Master Plan**



Roadway Network

Legend

Legal Classification/Use

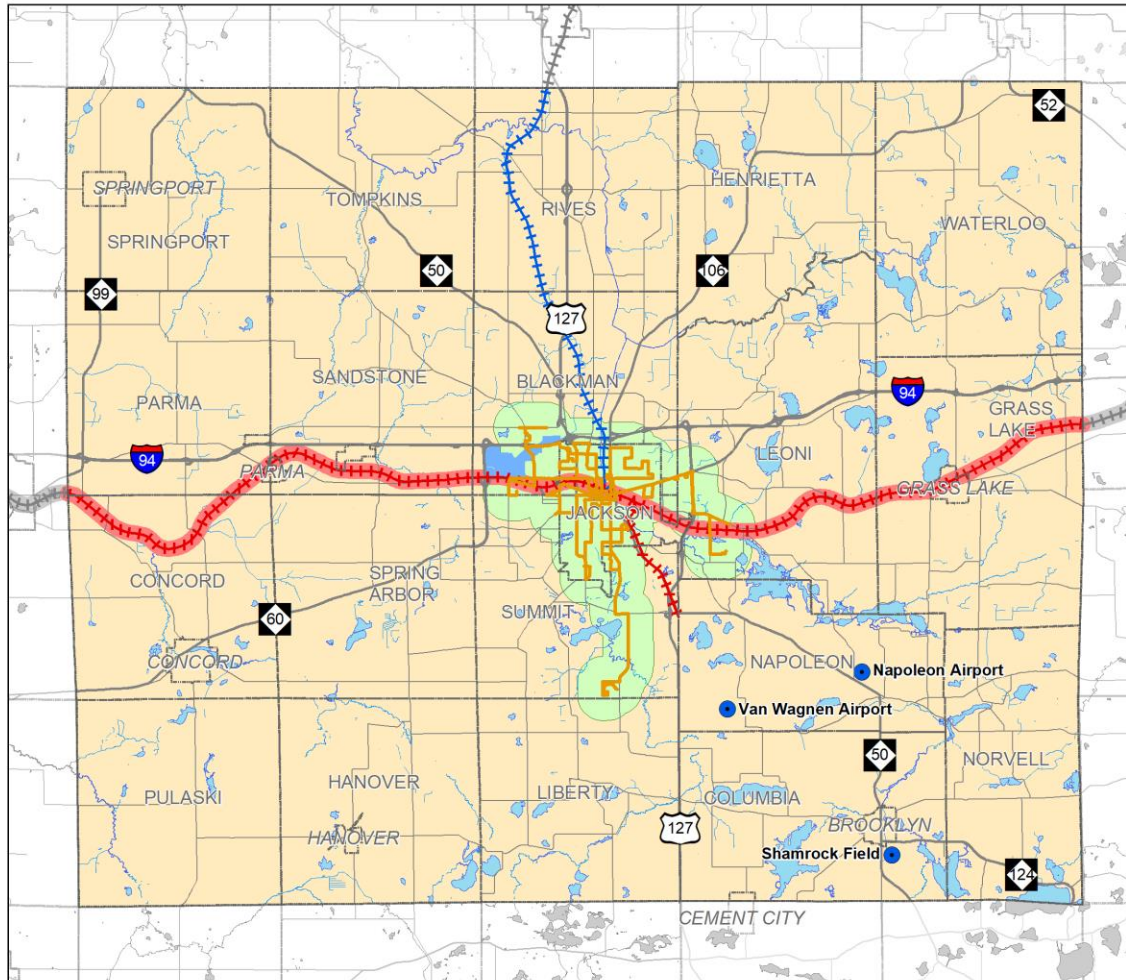
- Freeways
- Other State Highways
- Major Streets and Primary Roads
- Minor Streets and Local Roads
- Private Roads

Other Factors

- All Season Roadways
- Gravel Roadways

Map Date: 4/24/19





**Jackson County
Master Plan**



**Airports, Railroads,
and Transit Service**

Legend

Airports

- Jackson Co. Airport - Reynolds Field
- Other Airports

Railroads

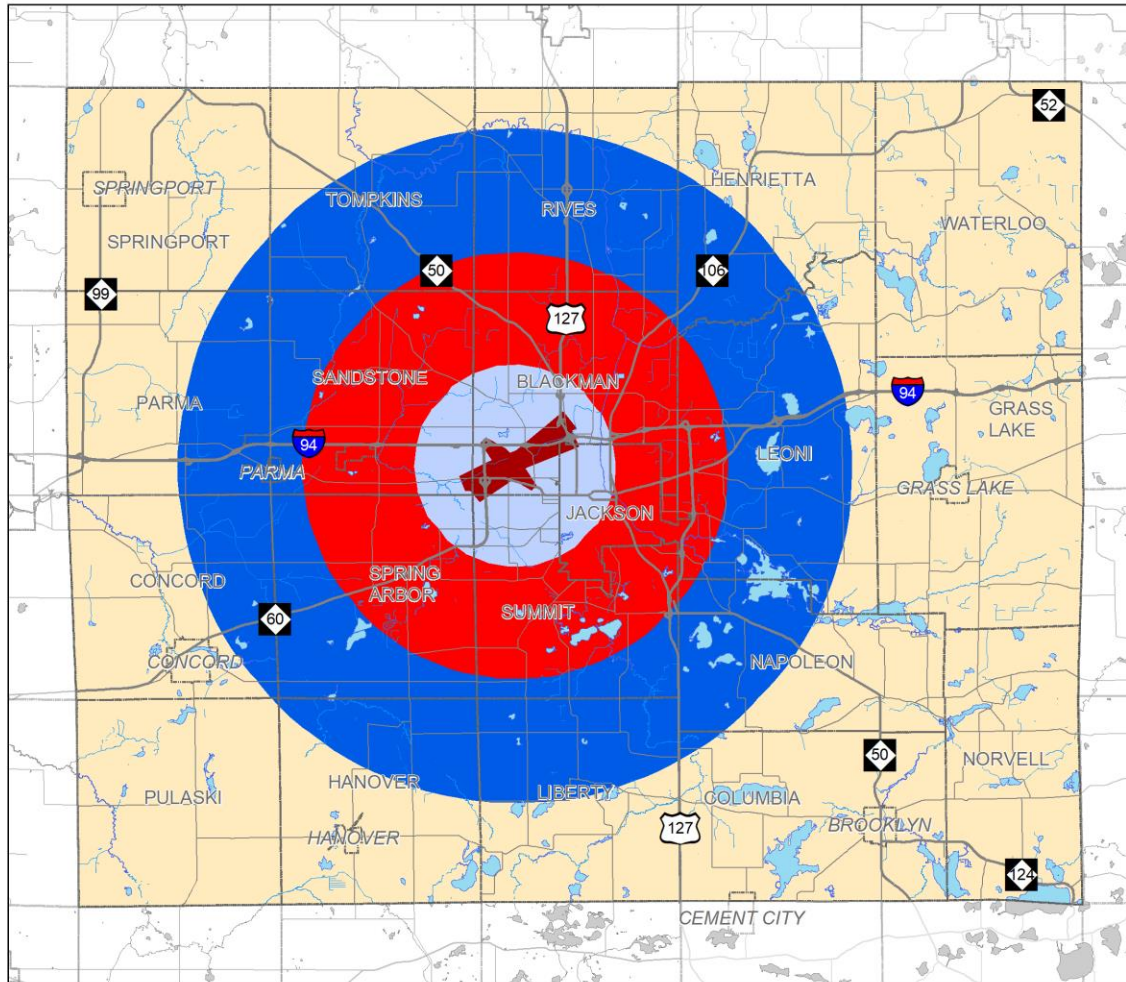
- Norfolk Southern Railway
- Jackson and Lansing Railroad
- AMTRAK Route

Transit Service

- JATA Routes
- Area within 3/4 of a mile of a JATA Route

Map Date: 5/29/19





**Jackson County
Master Plan**



Airport Permit Zones

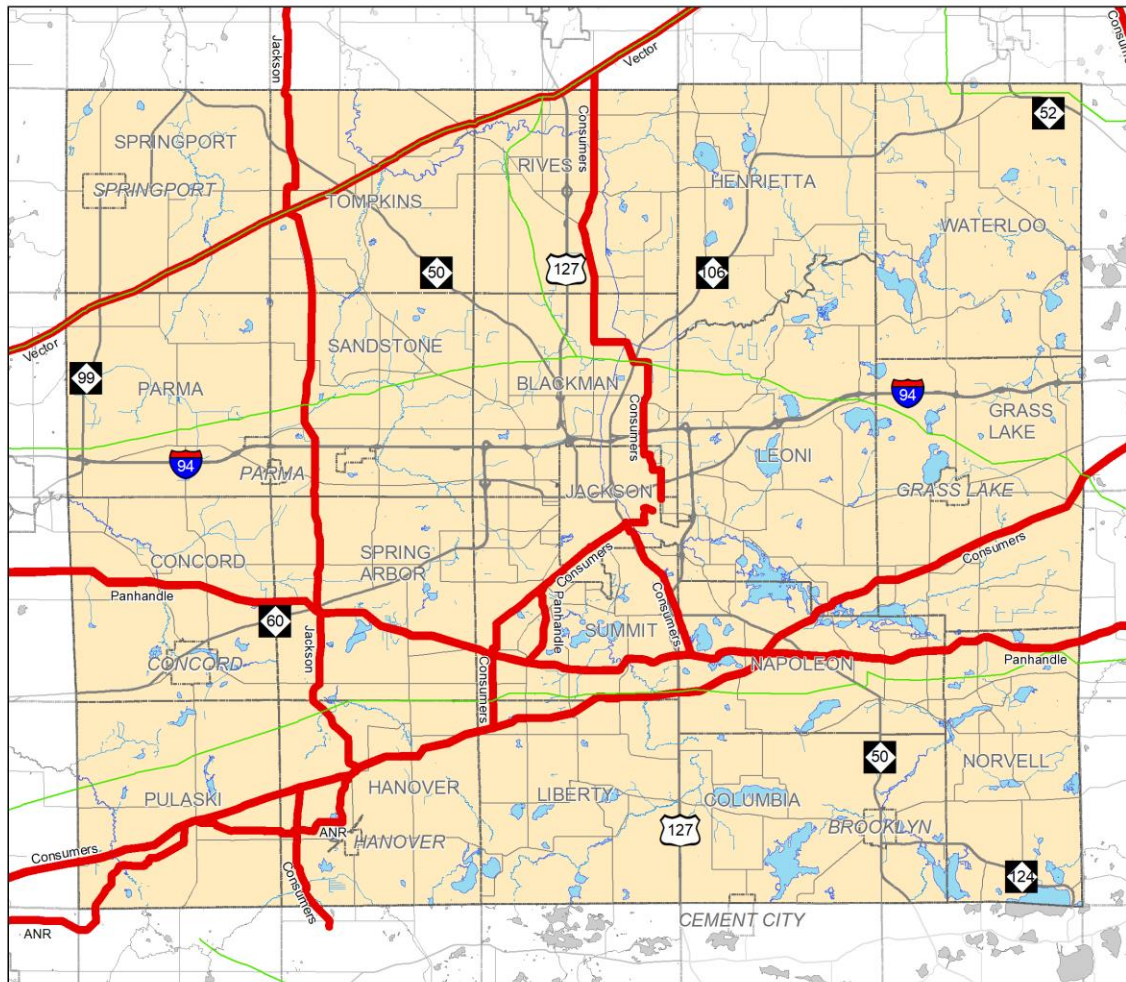
Legend

Reynolds Field Permit Zones

- Zone A -- Any Structure
- Zone B - Any Structure over 35 ft
- Zone C -- Any Structure over 100 ft.
- Zone D - Any Structure over 200 ft.

Map Date: 2/21/19





**Jackson County
Master Plan**



Gas Pipelines

Legend

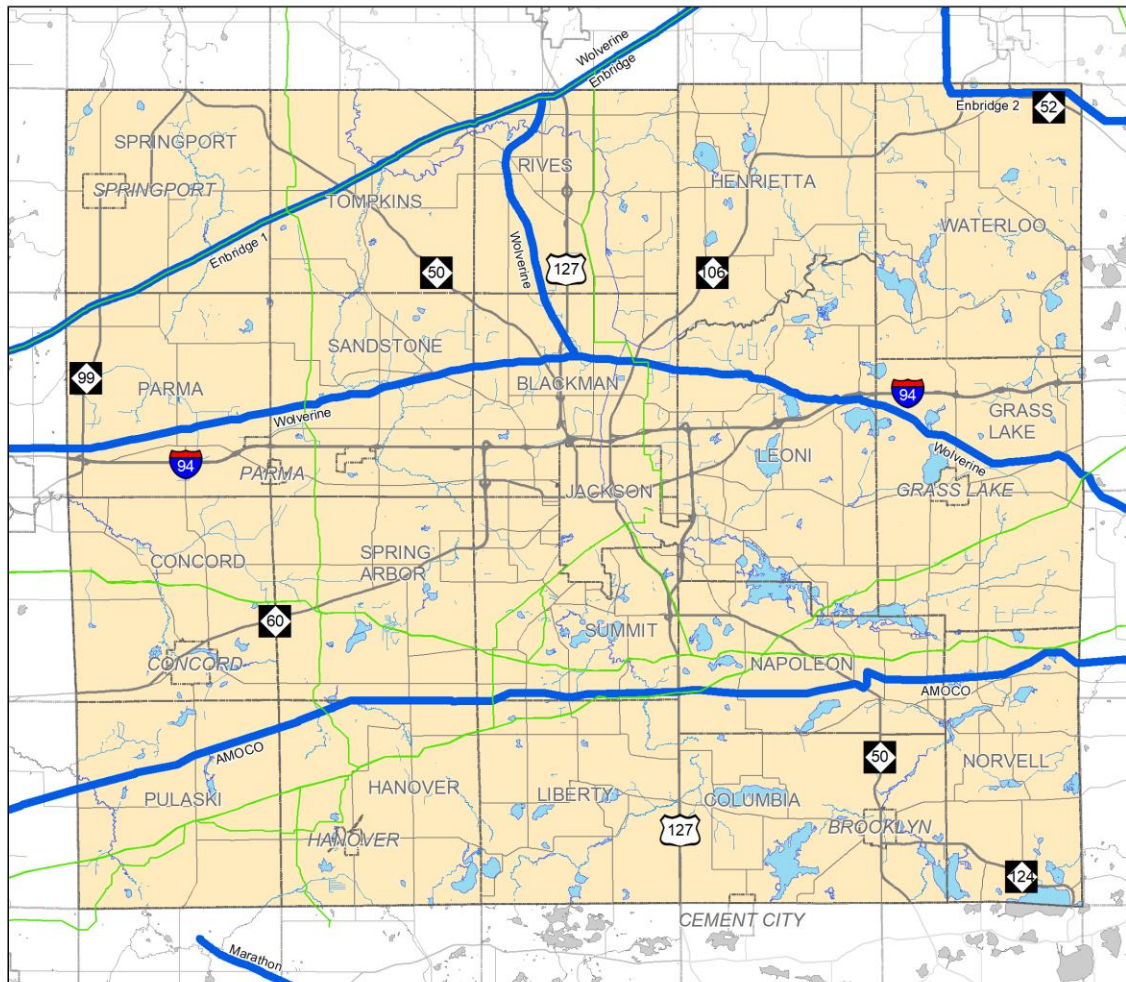
- Gas Pipelines
- Liquid Pipelines

Ownership

- AMOCO = Amoco Oil Co.
- ANR = ANR Pipeline
- Consumers = Consumers Energy Co.
- Enbridge 1 = Enbridge Energy Limited Partnership
- Enbridge 2 = Enbridge Pipelines (Toledo), Inc.
- Jackson = Jackson Pipeline Co.
- Marathon = Marathon Pipe Line, LLC
- Panhandle = Panhandle Eastern Pipeline Co.
- Vector = Vector Pipeline, L.P.
- Wolverine = Wolverine Pipeline Co.

Map Date: 3/13/19





**Jackson County
Master Plan**



Liquid Pipelines

Legend

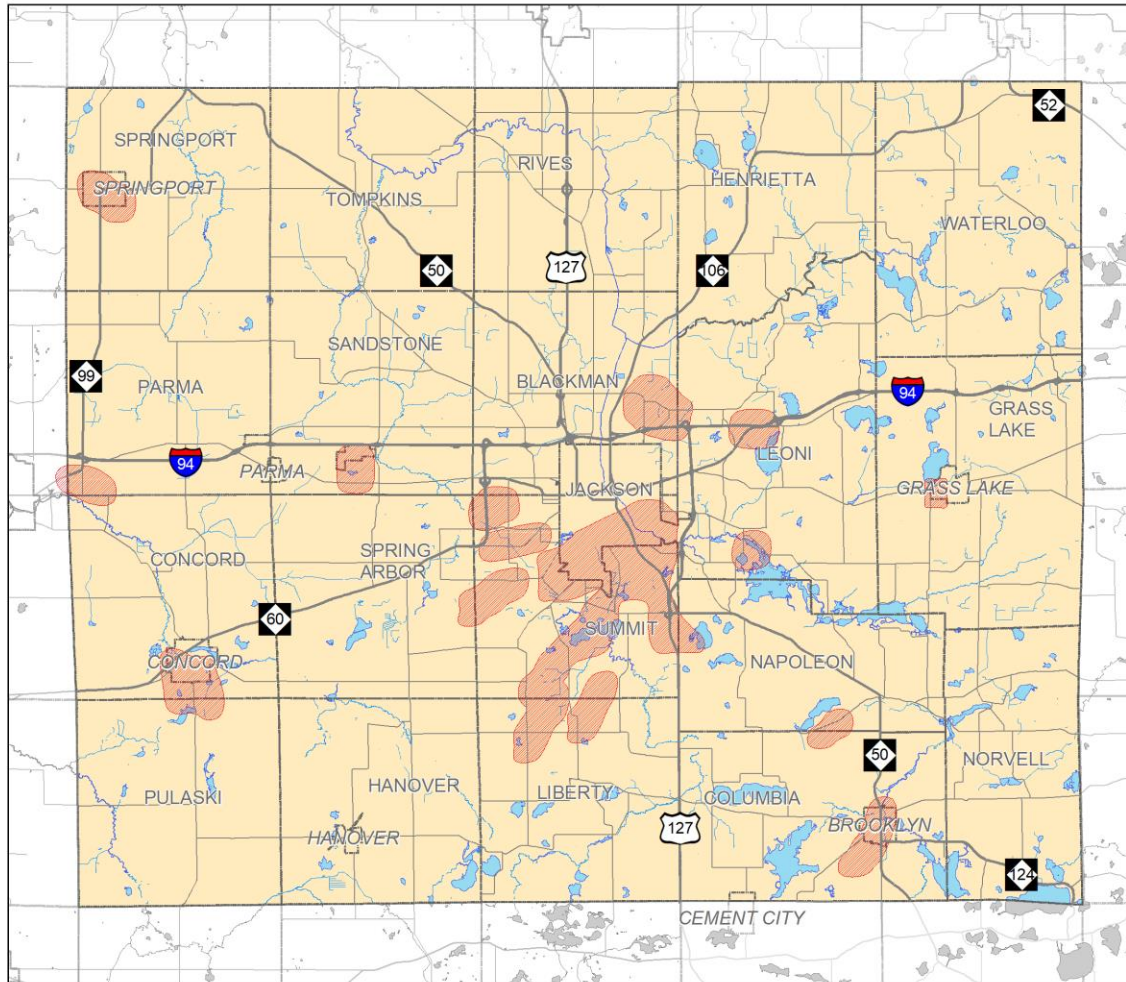
- Liquid Pipelines
- Gas Pipelines

Ownership

- AMOCO = Amoco Oil Co.
- ANR = ANR Pipeline
- Consumers = Consumers Energy Co.
- Enbridge 1 = Enbridge Energy Limited Partnership
- Enbridge 2 = Enbridge Pipelines (Toledo), Inc.
- Jackson = Jackson Pipeline Co.
- Marathon = Marathon Pipe Line, LLC
- Panhandle = Panhandle Eastern Pipeline Co.
- Vector = Vector Pipeline, L.P.
- Wolverine = Wolverine Pipeline Co.

Map Date: 3/13/19





Jackson County
Master Plan



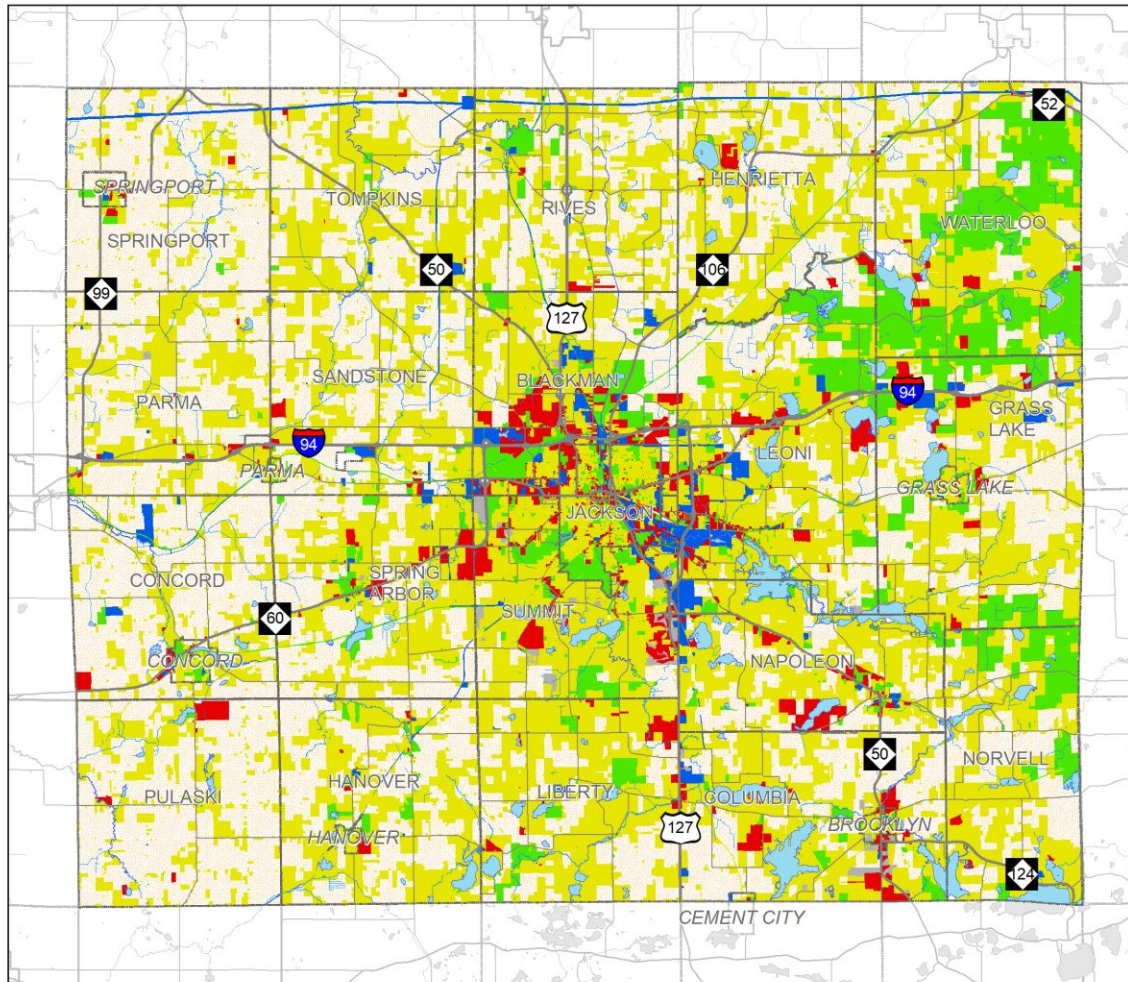
**Municipal Wellhead
Protection Areas**

Legend

-  Municipal Wellhead Protection Areas

Map Date: 3/13/19





**Jackson County
Master Plan**



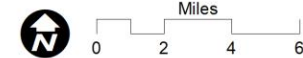
**Property
Assessment**

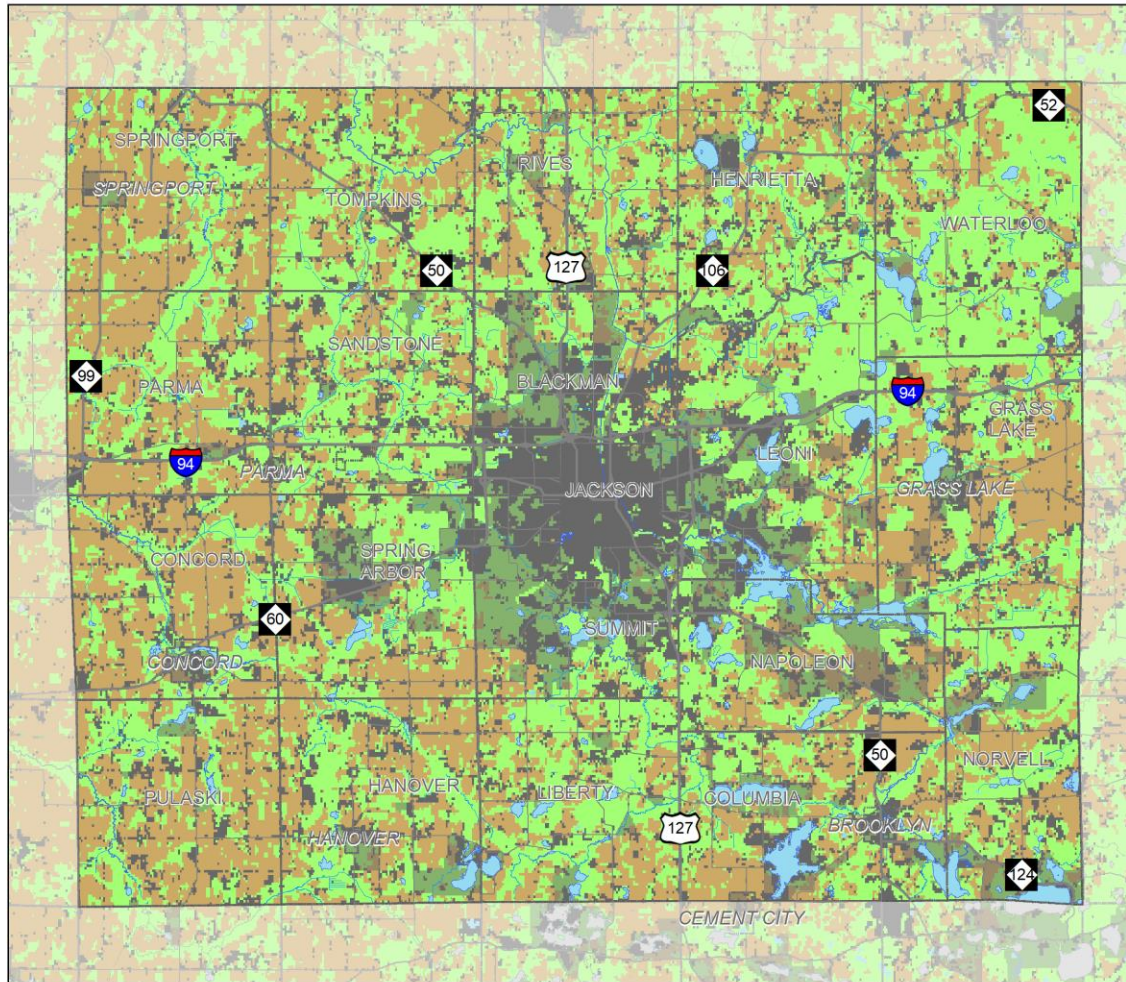
Legend

- Agricultural
- Residential
- Commercial
- Industrial
- Exempt
- Other

Map Date: 8/6/19
Assessment Data Date: 12/19/18

Parcel Layer Source:
Jackson County GIS





**Jackson County
Master Plan**



**Land Use and
Land Cover**

Legend

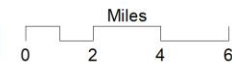
- Farmland (Agriculture)
- Forests
- Highly Developed Areas
- Highly Developed Areas

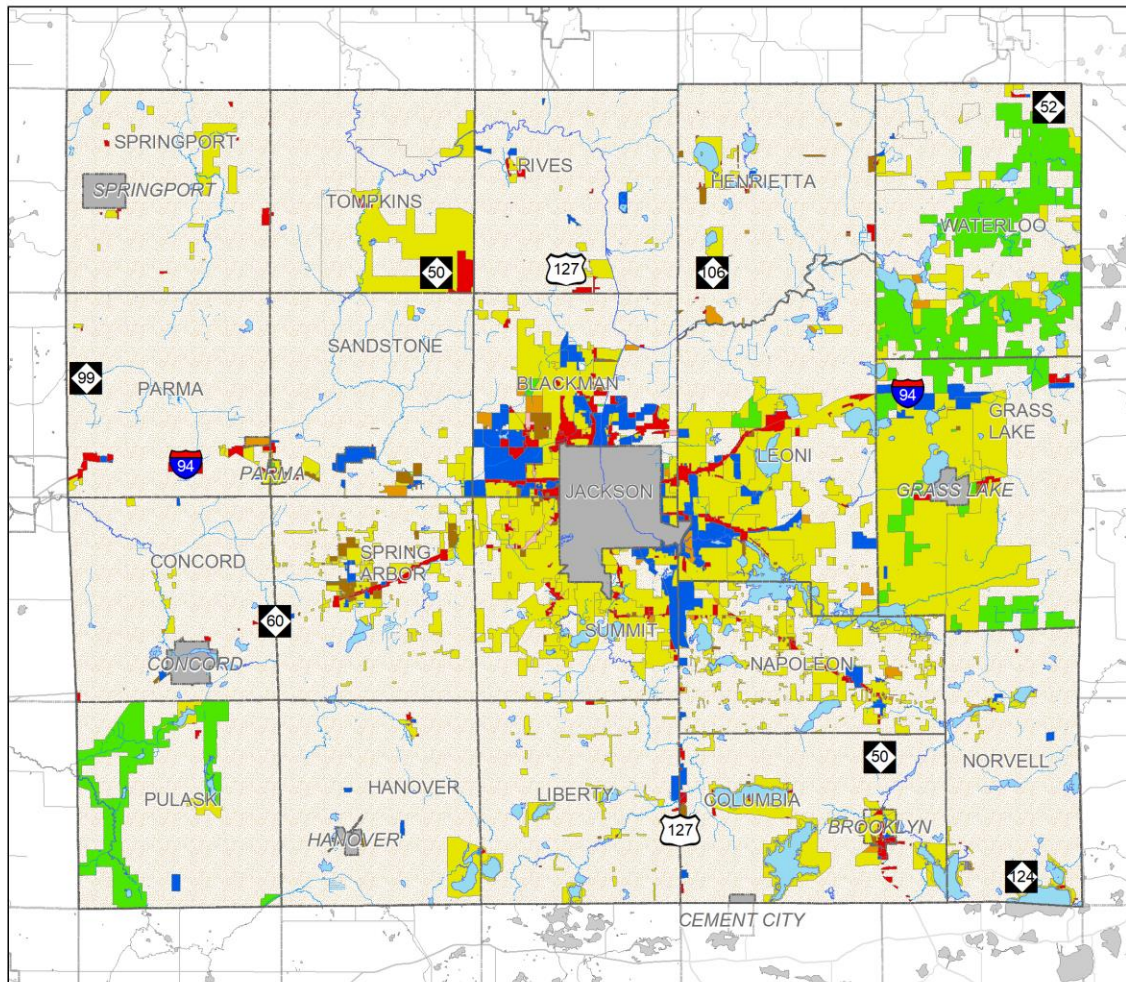
Notes and Data Source

The land use data is owned (and was developed) by the American Farmland Trust (AFT) and Conservation Science Partners for the Farms Under Threat program (as directed by the AFT).

This map represents major land uses in 2016. 'Developed Areas' = AFT's 'Urban and Highly Developed' and includes its 'Transportation' and 'Other Areas'. 'Low-Density Residential Areas' = AFT's 'Low-Density Residential', which covers U.S. Census blocks where the average acres per housing unit is below the 10th percentile farm size in Jackson County and also includes farmland and/or forests. 'Farmland (Agriculture)' = AFT's 'Cropland' and 'Pastureland'. 'Forests' = AFT's 'Forestland' and 'Woodland' and also includes its 'Federal Land' (with and without grazing).

Map Date: 8/4/20





**Jackson County
Master Plan**



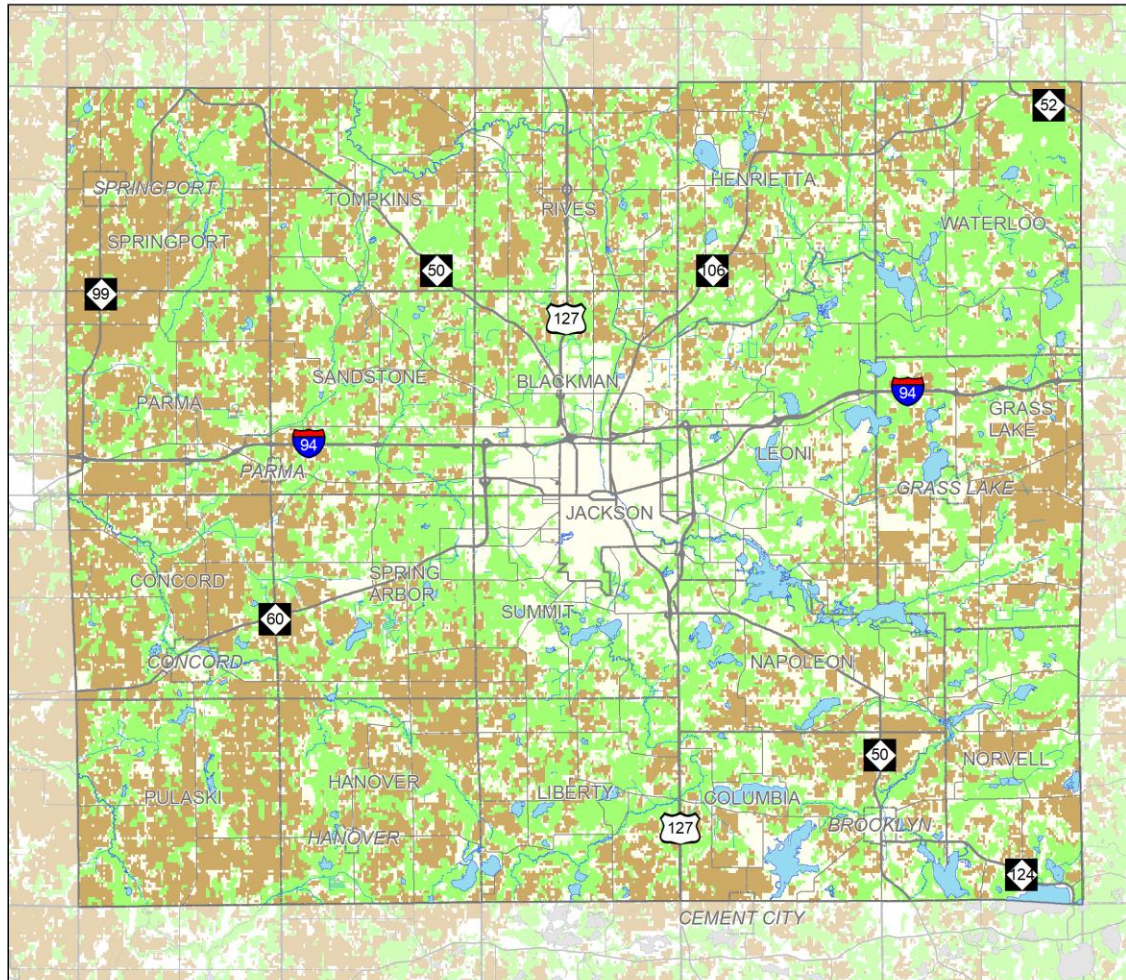
**Generalized
Zoning Districts**

Legend

- Agricultural
- Residential
- Mobile Home Residential
- Multiple-Family Residential
- Office
- Commercial/Business
- Industrial
- Public/Recreation
- Not Mapped

Map Date: 4/4/19





**Jackson County
Master Plan**



**Possible
Preservation Areas**

Legend

- Proposed Farmland Areas
- Proposed Forestland Areas

Notes and Data Source

Farmland Preservation Areas = Michigan's Best and Nationally Significant Agricultural Land

Forestland Preservation Areas = Forestland, excluding 'woodland' and 'federal land'.

The land use data is owned (and was developed) by the American Farmland Trust (AFT) and Conservation Science Partners for the Farms Under Threat program (as directed by the AFT).

Map Date: 8/4/20

