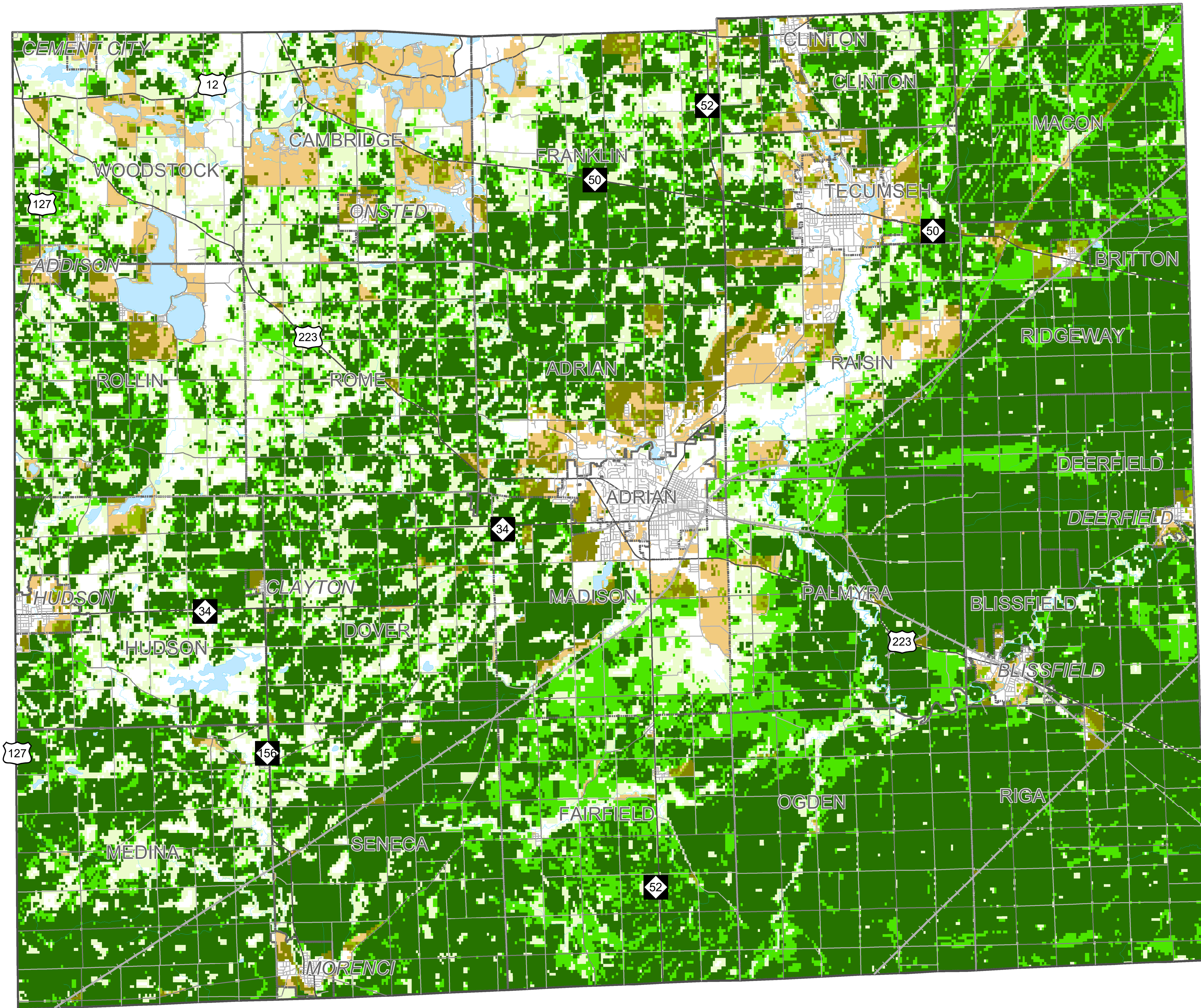




# Quality of Agricultural Land 2016



## Legend

- Agricultural Land**
  - Michigan's Best
  - Nationally Significant
  - Other
- Areas of Interest**
  - Low-Density Residential Areas

### Notes and Data Source

This map represents the quality of agricultural land in 2016. Nationally significant land meets the minimum productivity, versatility, and resilient (PVR) threshold set by the American Farmland Trust (AFT). Michigan's best land has a PVR value above the state's median.

The land use data is owned (and was developed) by the American Farmland Trust (AFT) and Conservation Science Partners for the Farms Under Threat program (as directed by the AFT).

