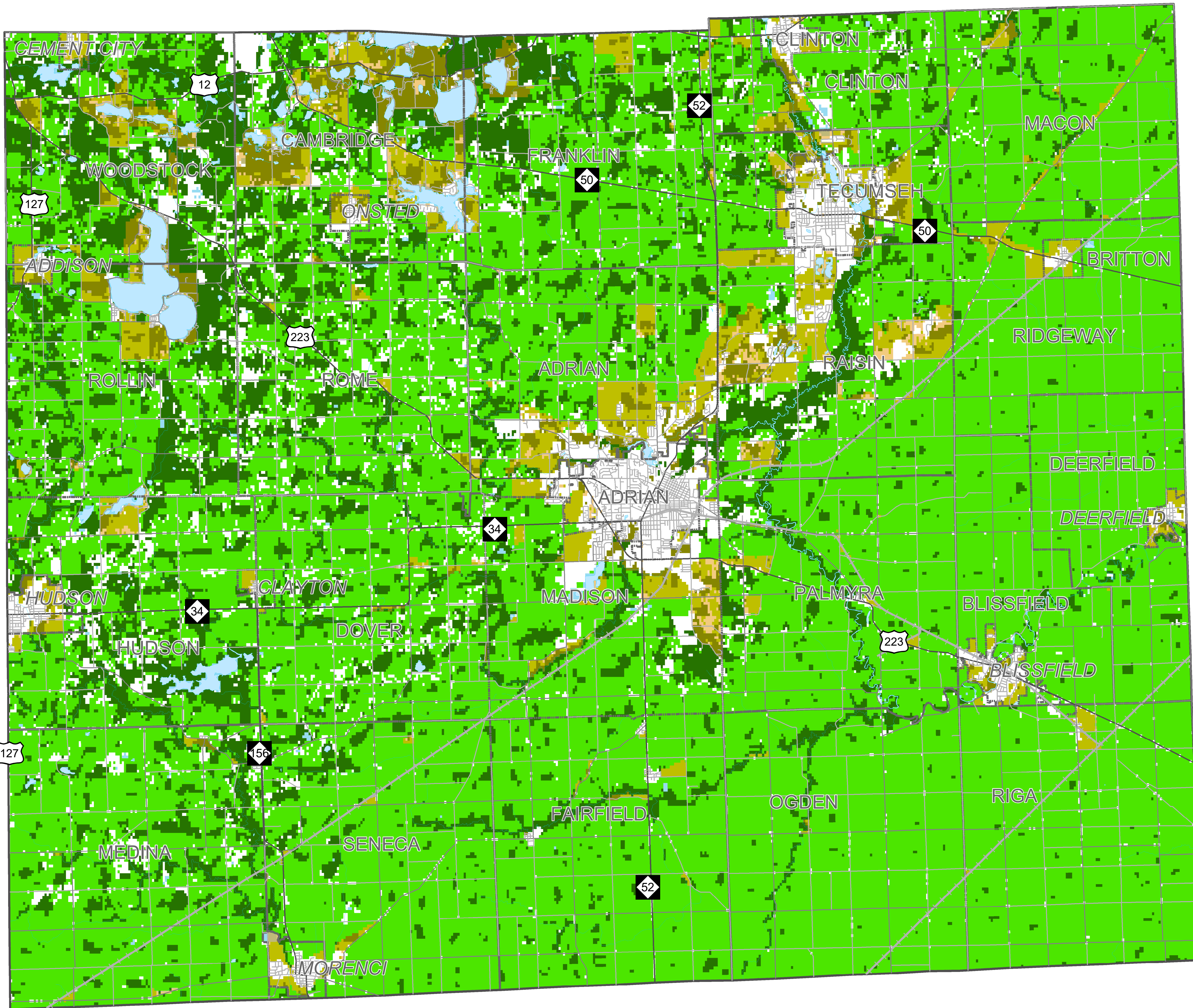




Major Land Uses and Land Cover 2016



Legend

- Major Land Uses/Cover**
-  Cropland and Pastureland
 -  Forestland and Woodland
 -  Urban and Highly Developed
- Areas of Interest**
-  Low-Density Residential Areas

Notes and Data Source

This map represents the major land uses in 2016, 'Forestland and woodland' includes 'federal lands' (with and without grazing). 'Urban and highly developed' includes 'transportation' and 'other areas'

The land use data is owned (and was developed) by the American Farmland Trust (AFT) and Conservation Science Partners for the Farms Under Threat program (as directed by the AFT).

