

F

Watkins Lake Rail Trail

Unpaved off-road trail following former rail corridor mostly in private ownership. Would require numerous easements with 3 homes directly on corridor. May need to use parallel gravel road for connection.



Length

4.6 miles

Surface

Unpaved off-road trail (option to pave later if desired)

Right-of-Way

Former Rail Corridor and existing trail segment in Watkins Lake State Park

Public Input

High Priority. Local stakeholders actively working on trail alignment.

Ownership

12 private property owners. Talks with Sportsman Club in Brooklyn have taken place.

Topography

Assume a graded rail corridor

Bridges + Boardwalks

Minor. Some wetlands nearby.

Road Crossings

Minor

Existing Structures

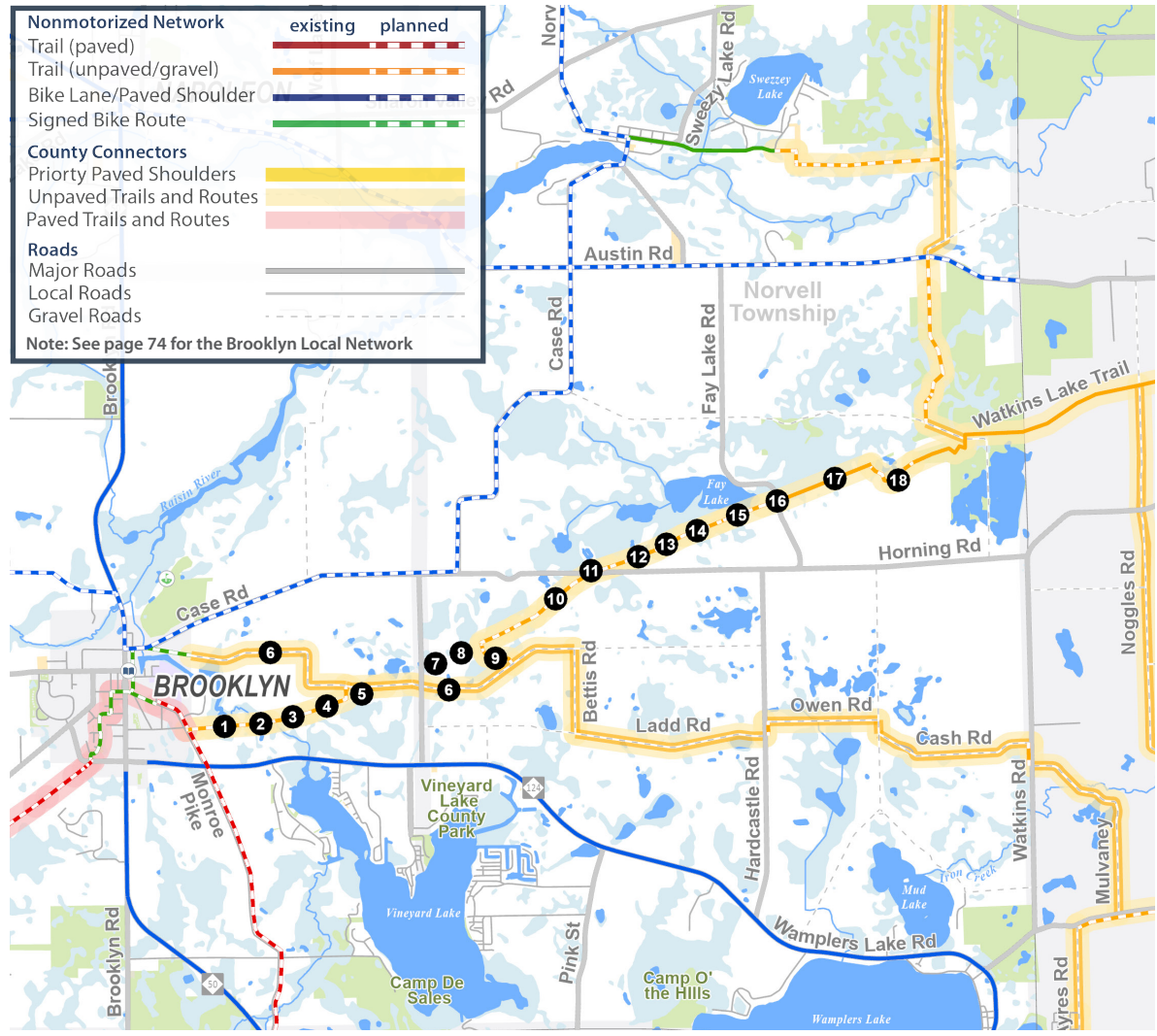
3 homes directly on corridor

Magnitude of Cost

\$1.59 Million (Further evaluation needed. Price could vary considerably due to easements + bridge)

Route Alternative

May need to use Waterman Road right-of-way (gravel) to by-pass homes on corridor.



Watkins Lake Rail-Trail Considerations

- 1 Easement required through Brooklyn Sportsman's Club, while trail can be located in safe location, signs would be required to warn trail users to expect sound of gun fire
- 2 Bridge required over River Raisin
- 3 Easement required through private property
- 4 Easement required through private property
- 5 Easement required through private property
- 6 Gravel road bike route on Waterman provides alternative if easements can not be obtained
- 7 House in middle of corridor, easement required
- 8 Corridor runs parallel to clothing optional resort
- 9 Connect to Waterman Road using existing right-of-way and easement through private property
- 10 Easement required through private property
- 11 Marked crosswalk at Horning Road
- 12 Easement required through private property
- 13 Easement required through private property
- 14 Easement required through private property
- 15 Easement required through private property
- 16 Marked crosswalk at Fay Lake Road
- 17 Existing Trail
- 18 Complete gap in trail