

# Jackson City ⊕ County Nonmotorized Plan



A plan for people who walk, bike and ride

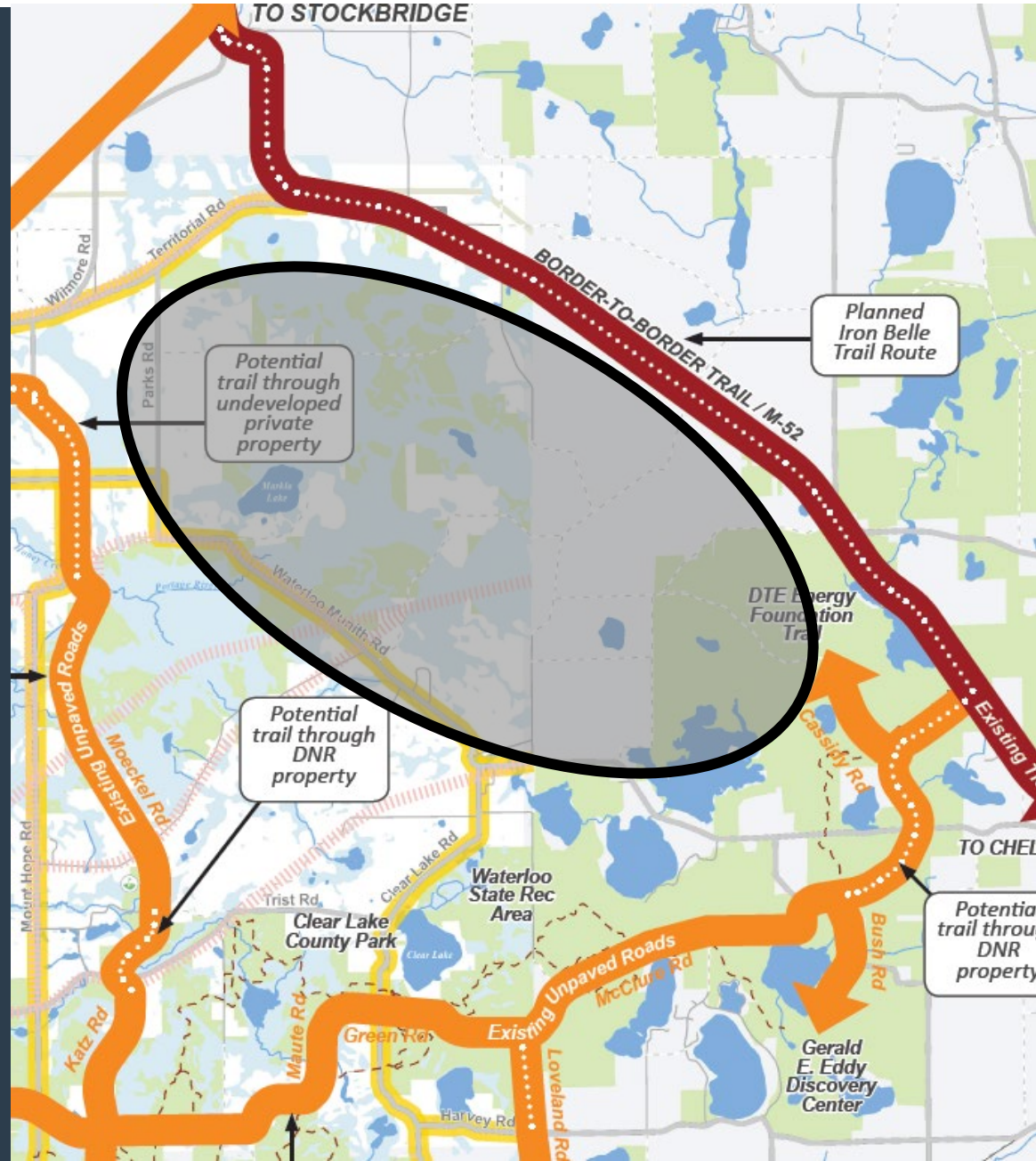
## Proposed Changes to Preliminary Plan

Based on web input and ten in-person meeting  
held September 9<sup>th</sup> through September 18<sup>th</sup>



# Gravel Road Routes

- Add shorter gravel road loops in the northwest corner of the county and into Washtenaw County; connecting to DTE Energy Foundation Trail and Border-to-Boarder Trail
- Desire to have higher level maintenance on gravel roads marked as bike routes





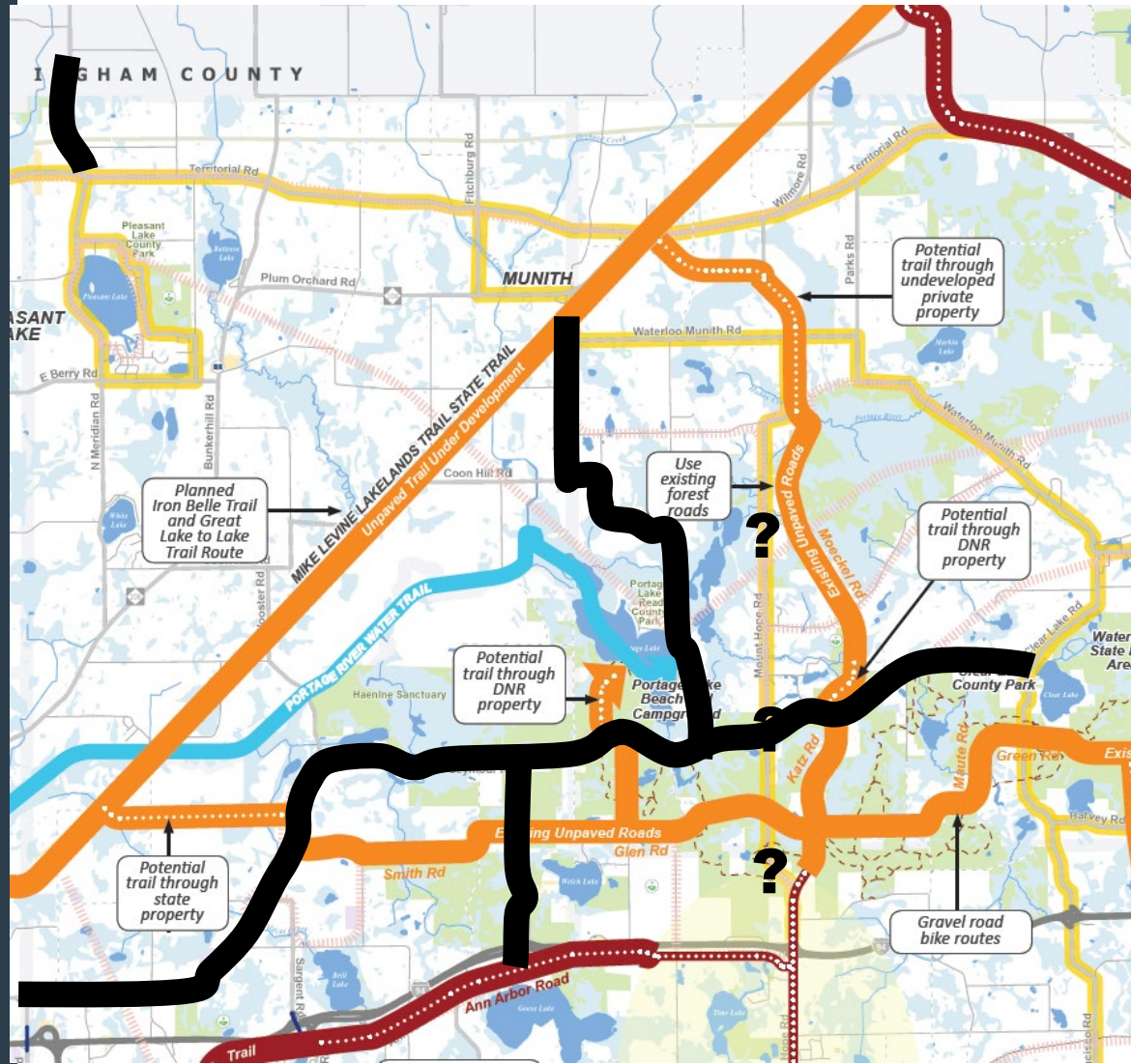
- 
- SPRING ARBOR**
- CONCORD**
- HORTON**
- HANOVER**
- Existing Trail
- FALLING WATER TRAIL
- Planned Iron Belle Trail and Great Lake to Lake Trail Route
- Potential trail following abandoned rail corridor through private property
- Abandoned Rail Corridor (private)
- Abandoned Rail Corridor (Consumers Energy)
- Potential trail following abandoned rail corridor owned by Consumers Energy
- Potential to extend trail to Hillsdale County following abandoned rail corridor owned by Consumers Energy





# Priority Paved Shoulders

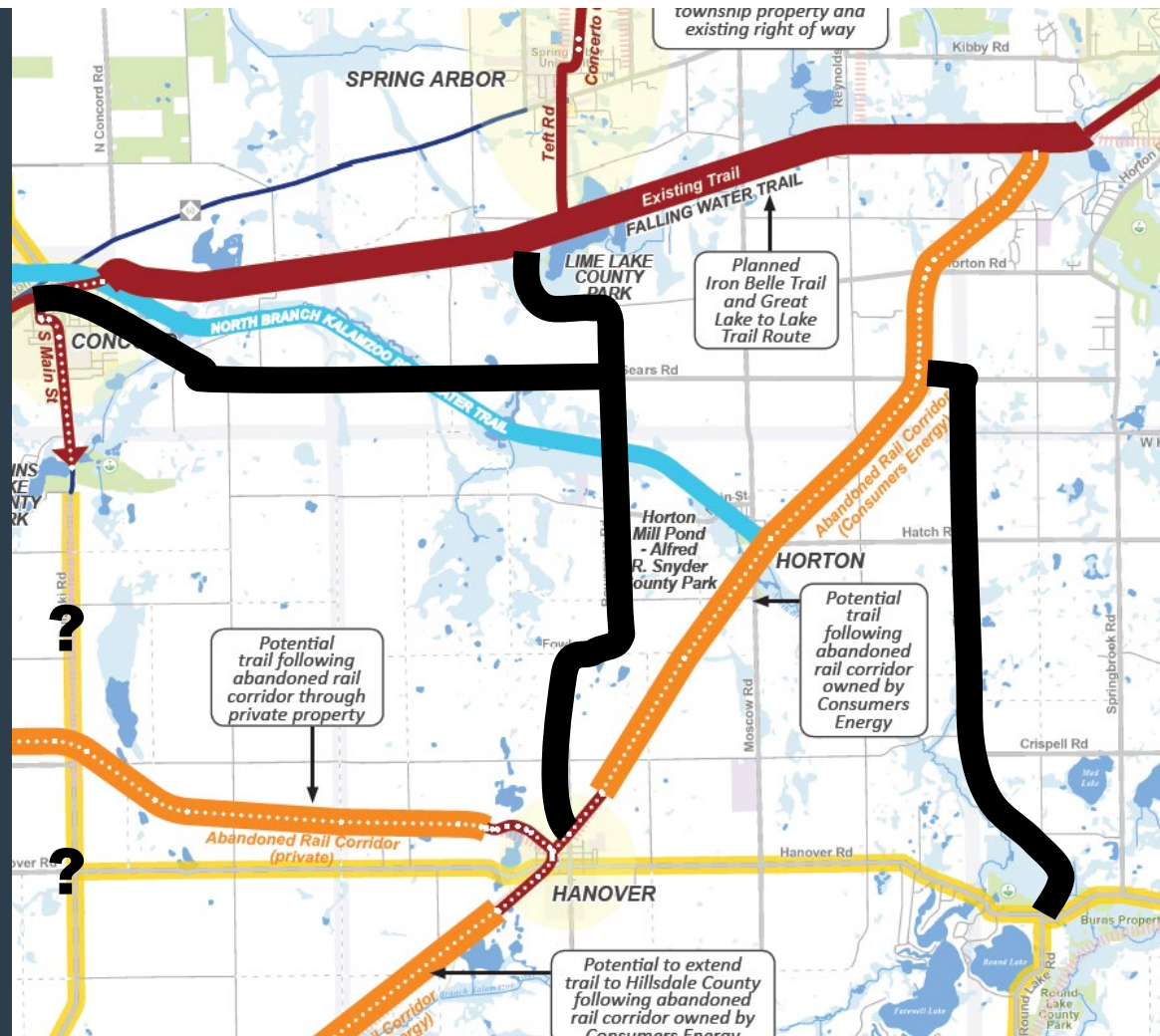
- Look at adding the following roads to priority paved shoulders in the northeast part of the county:
  - Seymour Road
  - Coonhill Road
  - Portage Lake Road
  - Leary Road
  - Clear lake Road
  - Race Road
  - N Meridian Road
- Re-evaluated Mount Hope Road as a priority paved shoulder





# Priority Paved Shoulders

- Look at adding the following roads to priority paved shoulders in the southwest part of the county:
  - Roundtree Road
  - Bowerman Road
  - Sears Road
  - Thorne Road
- Re-evaluate Pulaski as a priority paved shoulder

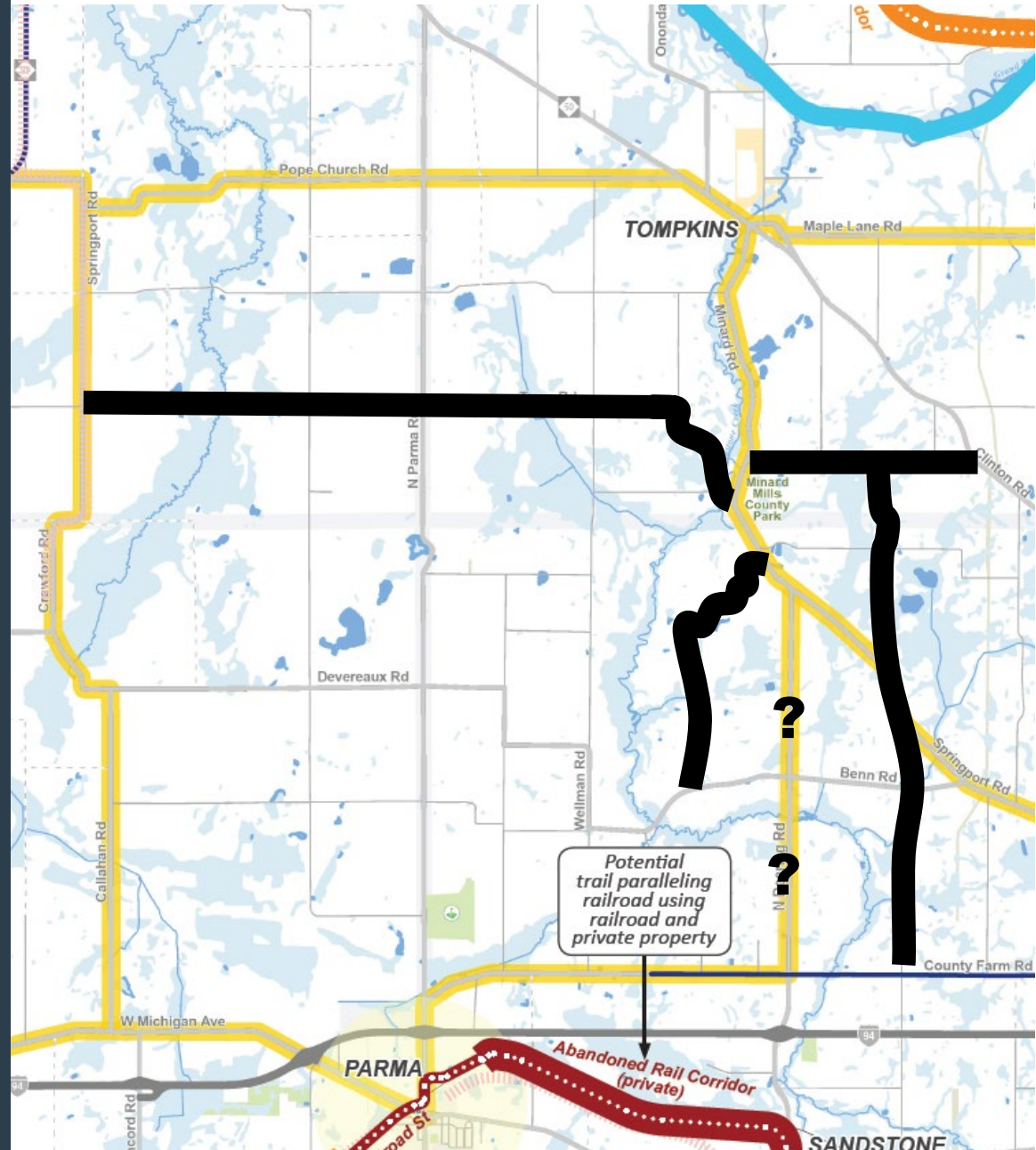






# Priority Paved Shoulders

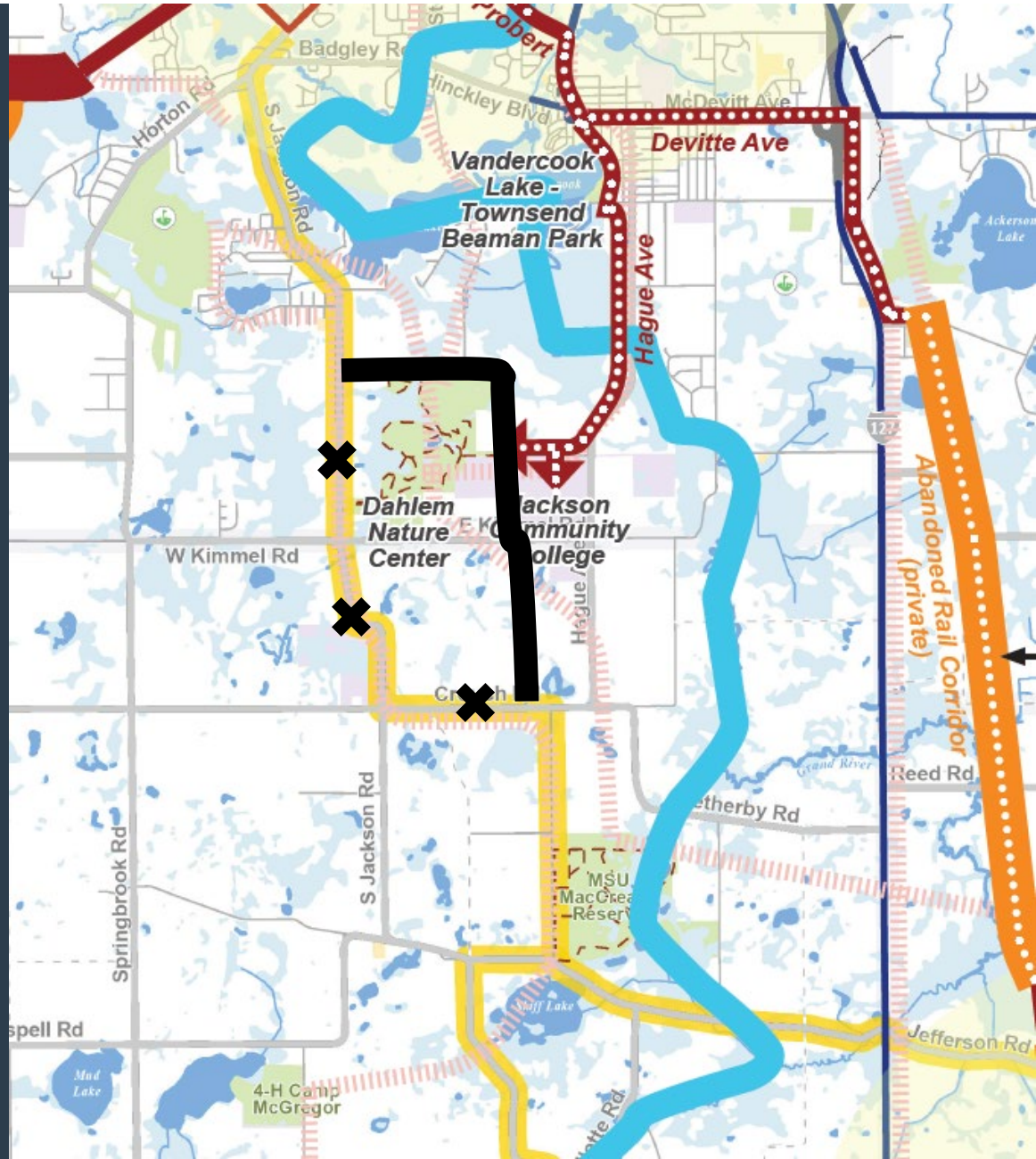
- Look at adding the following roads to priority paved shoulders in the northwest part of the county:
  - Town Road
  - Springport Road
  - Lincoln Road
  - Sandstone Road
  - Stepladder Road
- Re-evaluate Dearing Road as a priority paved shoulder





# Priority Paved Shoulders

- Connection to Jackson Community College/Dahlem Nature Center/MSU MacCreedy Reserve - change priority paved shoulders from S Jackson Road / Crouch Road to Browns Lake Road/ Wickwire Road

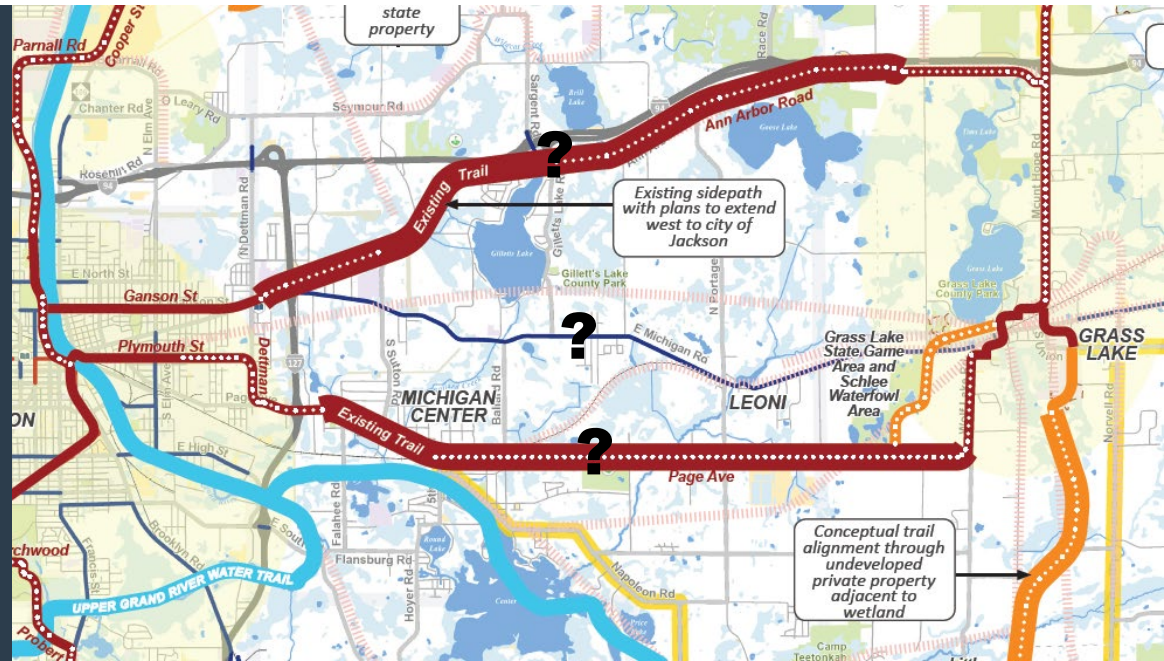






# Jackson to Grass Lake Connection

- Ann Arbor Road vs Page Ave vs Michigan Ave
  - Suggestion to keep Page Ave rural (paved shoulders) and focus pathway along Ann Arbor Road
  - Michigan needs more separation
  - Ann Arbor Road less direct

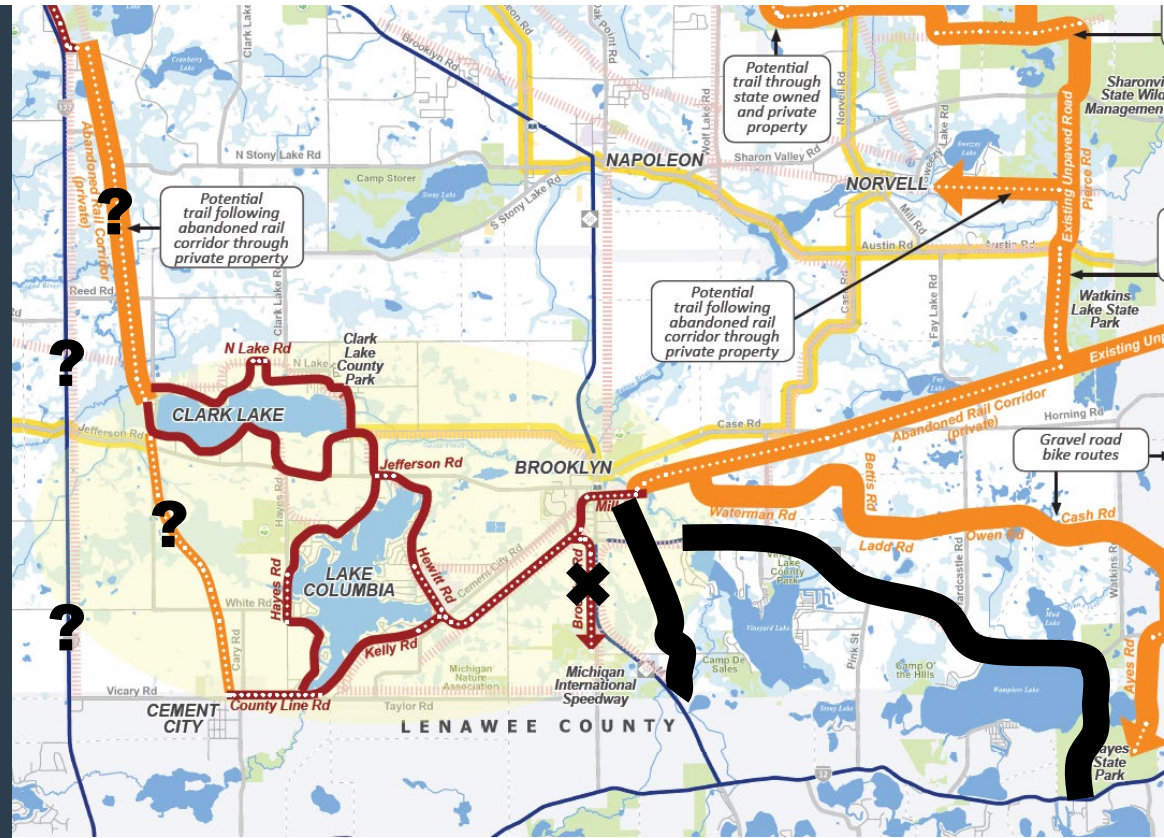






# Columbia Twp

- Note on wide shoulder along Wamplers Lane Road – public would like to see more separation
- Complete Sidewalk Gaps in Brooklyn
- Change connection to MIS from Brooklyn Rd to Monroe Pike Rd
- Look into connection to City of Jackson – US 127 ROW or Abandoned Rail Corridor?

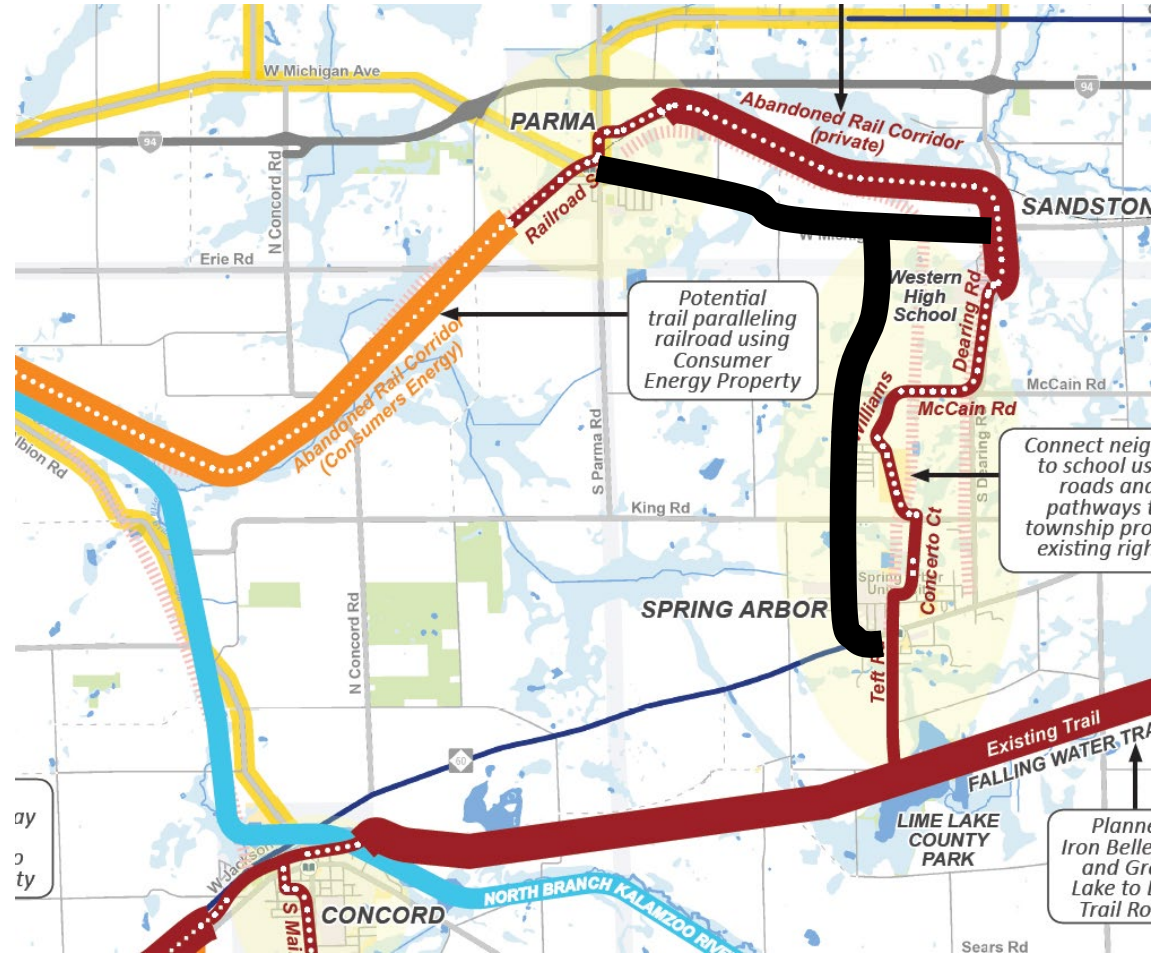


There were many questions regarding where a path along US-127 would be located and how loud the traffic noise would be



# Connection to Calhoun County

- Evaluate using Chapel Road and Michigan Ave to make connection from Spring Arbor/Falling Waters Trail to Western School Campus/Parma
- Keep paved shoulder recommendation on Albion Road – sidepath not feasible

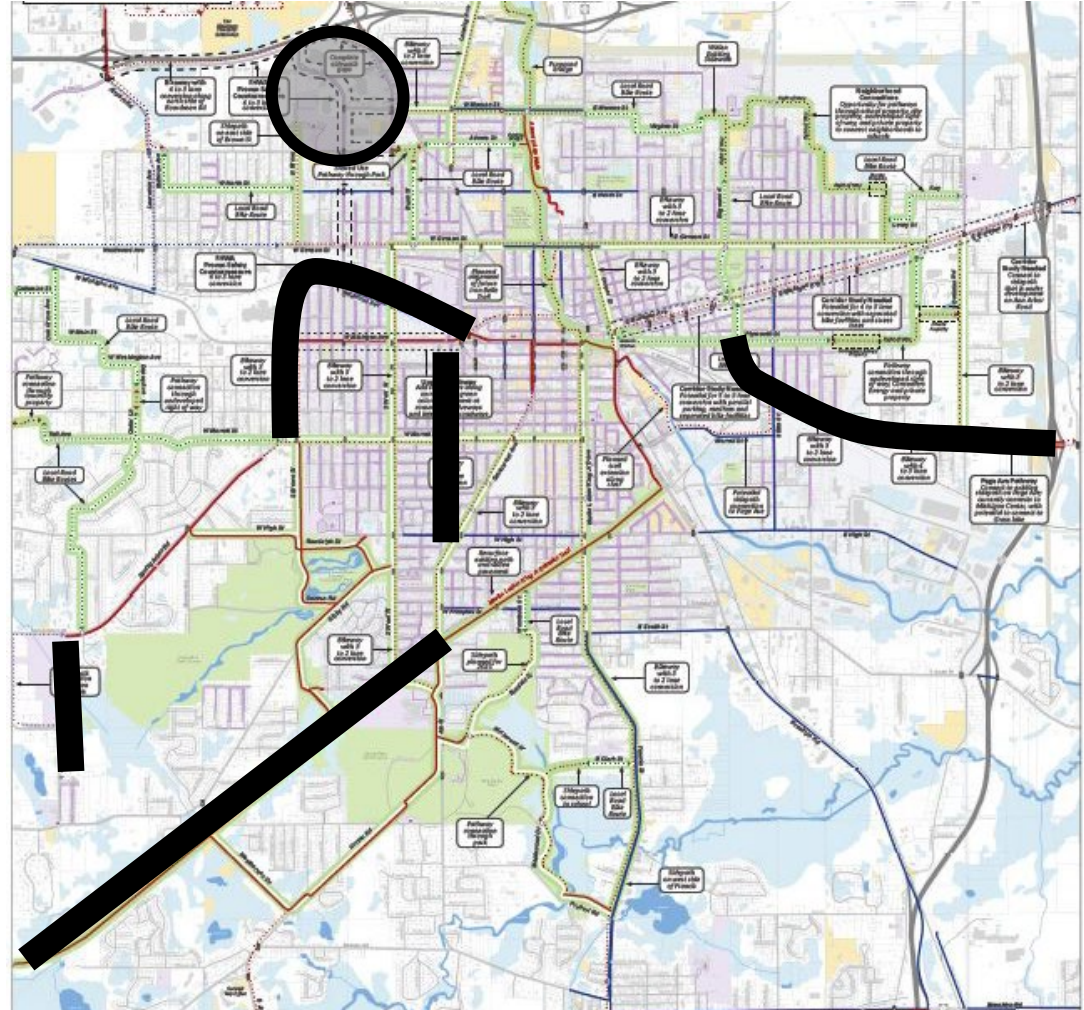






# Jackson/Summit Twp

- Look into better connections to shopping area near I-94 & N West St
- Look into providing bicycle connections along some of the busier roads
- Add connections from neighborhoods to Falling Water Trail
- Look at better connections between neighborhoods, schools and parks in Summit Twp
- Planned SRTS pathway in Summit Twp to Dresden Dr
- Improve the appearance and bicycle and pedestrian facilities on Page Ave



Provide better connections to social services such as food pantries, job training, health care, etc.







-



# Spring Arbor

- Neighborhood route to school not feasible nor desirable
- Dearing Road, desired by schools, will be a very challenging and costly connection
- Evaluate using Chapel Road and Michigan Ave to make connection from Spring Arbor/Falling Waters Trail to Western School Campus/Parma
- Add details regarding Improvements to 2<sup>nd</sup> Street
- Evaluate city loop (Chapel, Dearing, King, 2<sup>nd</sup>)
- Add connection to existing elementary

