

Region 2 Planning Commission

Serving Hillsdale, Jackson and Lenawee Counties

To: Region 2 Planning Commissioners
Municipal & County Planning Commissioners in Lenawee County
Lenawee Now & Other Interested Parties

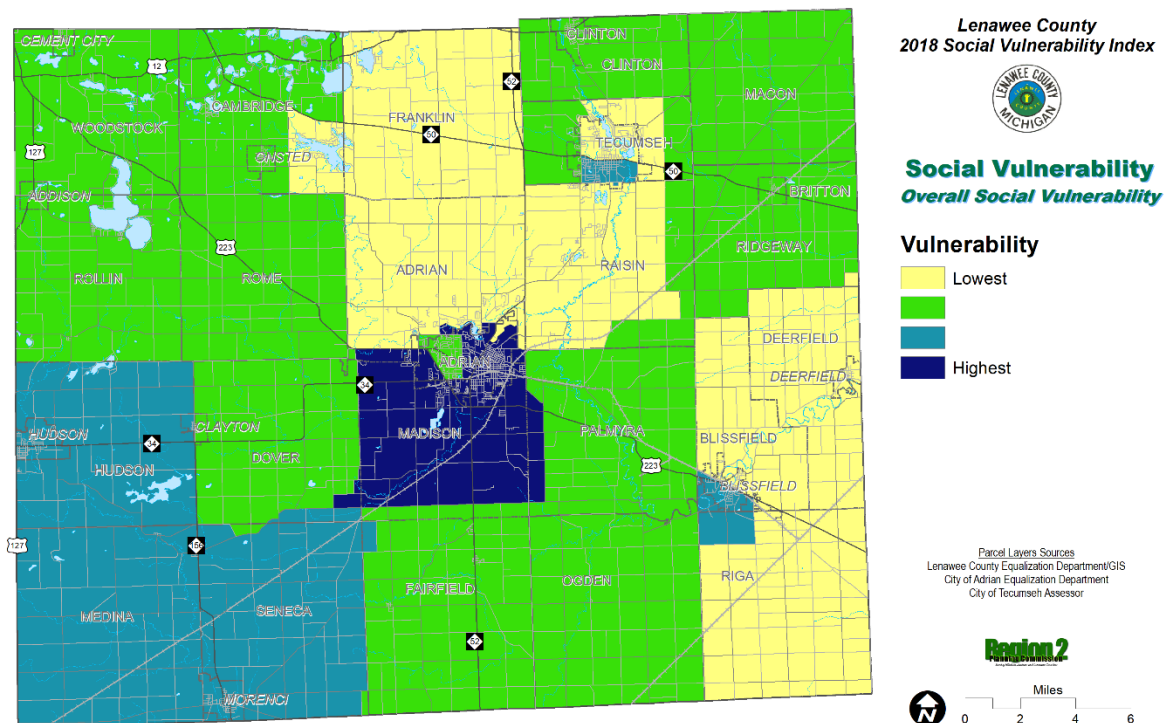
From: Grant E. Bauman, R2PC Principal Planner

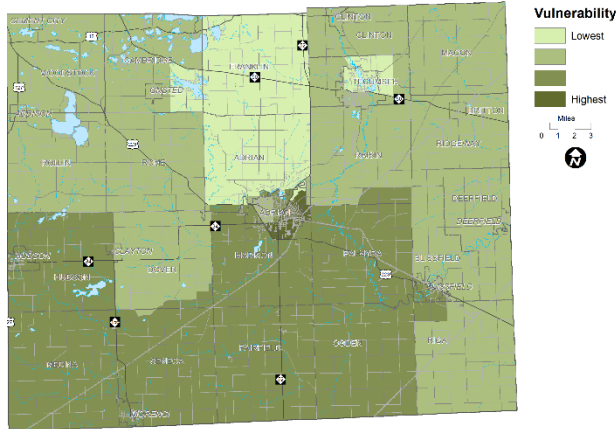
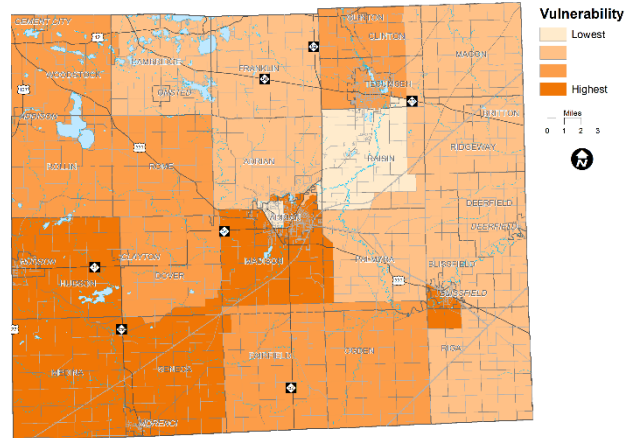
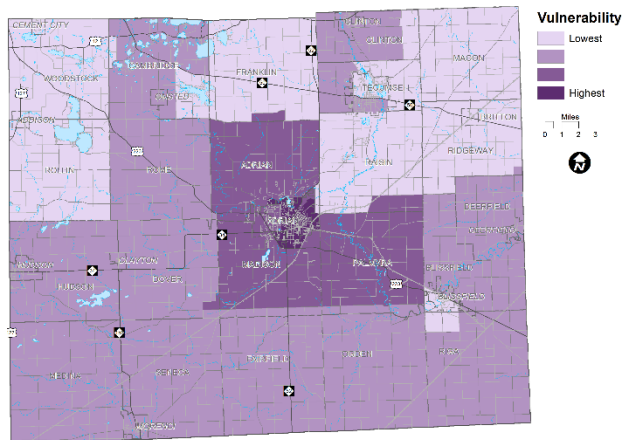
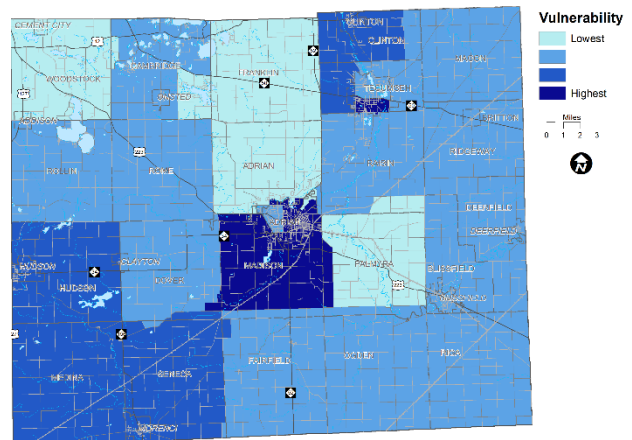
Date: June 10, 2020

Subject: **Lenawee County | Social Vulnerability Index 2018**

According to the CDC's (Centers for Disease Control and Prevention's) Agency for Toxic Substances and Disease Registry (ATSDR), **social vulnerability** refers to a community's capacity to prepare for and respond to the stress of hazardous events ranging from natural disasters, such as tornadoes or disease outbreaks, to human caused threats, such as toxic chemical spills. **The Social Vulnerability Index (SVI [2018])¹ County Map** depicts the social vulnerability of communities, at census tract level, within [Lenawee County]. SVI [2018] groups **fifteen census-derived factors** into **four themes** that summarize the extent to which the [County] is socially vulnerable to disaster. The factors include economic data as well as data regarding education, family characteristics, housing, language ability, ethnicity, and vehicle access. Overall Social Vulnerability combines all the variables to provide a comprehensive assessment.

Overall Social Vulnerability²



Socioeconomic Status³**Household Composition/Disability⁴****Race/Ethnicity/Language⁵****Housing/Transportation⁶****Data Sources:**

Centers for Disease Control and Prevention/Agency for Toxic Substances and Disease Registry/ Geospatial Research, Analysis, and Services Program. Social Vulnerability Index 2018 Database Michigan. data-and-tools-download.html. Accessed on 2020.

References:

Flanagan, B.E., et al., A Social Vulnerability Index for Disaster Management. *Journal of Homeland Security and Emergency Management*, 2011. 8(1).

Endnotes:

1. The SVI combines percentile rankings of US Census American Community Survey (ACS) 2014-2018 variables, for Michigan, at the census tract level.
2. Overall Social Vulnerability: All 15 variables.
3. Socioeconomic Status: Poverty, Unemployed, Per Capita Income, No High School Diploma.
4. Household Composition/Disability: Aged 65 and Over, Aged 17 and Younger, Single-parent Household, Aged 5 and over with a Disability.
5. Race/Ethnicity/Language: Minority, English Language Ability.
6. Housing/Transportation: Multi-unit, Mobile Homes, Crowding, No Vehicle, Group Quarters.